



## Site Acquisition *Requirements*

*Actively seeking exceptional sites  
across the United Kingdom*

Scan to Contact



# Rays

Wash Club

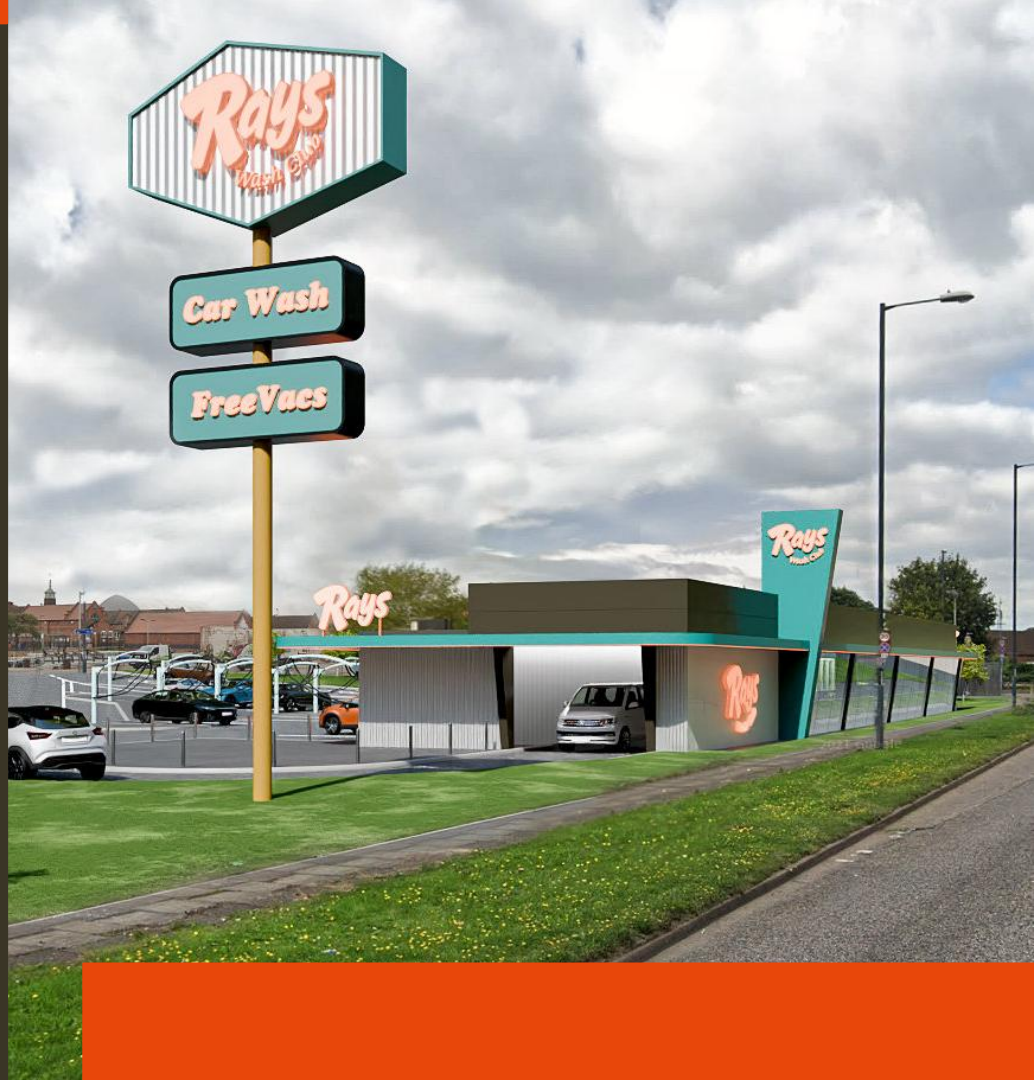
A proven US concept,  
now in the UK.  
*Built to scale.*

Rays Wash Club operates America's dominant **express tunnel car wash** format on UK soil - a subscription-led, world-class offering unlike anything else on the UK forecourt. Institutionally backed, transatlantically connected, and built for national scale.

**US-Proven, Subscription-Led Model** Modelled on US operations and dozens of scaled operators running hundreds of sites

**Institutionally Funded & Capitalised** Immediate ability to transact - a credible, long-term covenant for any landlord or vendor

**World-Class Equipment, Disciplined UK Rollout** Best-in-class tunnel technology deployed across multiple high-quality UK sites





Rays

Rays

Rays

This is what  
clean  
feels like.

☀️

Life's too  
short not to  
shine.

Rays  
Wash Club

# What We're Looking For

NATIONAL SITE ACQUISITION CRITERIA



## Site Area

**0.6+ acre**

Sweet spot 1.0 acre - regular shape preferred



## Traffic Throughput

**20k+ daily traffic count**

Frontage to A-road or key distributor



## Location & Catchment

**50k+ population**

within 10-min drive

Nationwide search - co-located with retail, leisure or fuel



## Access & Circulation

**Dedicated access**

Easy ingress and egress



## Roadside Prominence

**Unobstructed frontage**

Clear on both approach and departure

Prominent roadside frontage and clear brand presence are essential to the operating model



## Tenure & Planning

**Freehold or Leasehold**

Flexible on tenure structure

*Introductory fees are paid for all previously unidentified sites that successfully transact.*



# What You Can Expect From Us

We are well-capitalized and actively building our UK site pipeline.  
We welcome all introductions and respond swiftly and decisively to every opportunity.



## **Introductory Fees Paid**

Finder's fee payable on all previously unidentified sites that successfully transact

We value and reward strong agent and introducer relationships



## **Decisive & Well-Capitalised**

Institutionally backed with full certainty of funds - able to move swiftly and decisively

Credible, long-term covenant for any landlord or vendor



## **Premium Tenant & Experienced Operator**

Experienced multi-site express car wash operator with exceptional track-record in the US

High-spec builds that enhance surrounding real estate, with long-term covenant strength



## **Rapidly Building Our UK Pipeline**

Actively targeting sites nationwide

Growing brand with serious ambitions - prompt response to every site introduction



**Rays**  
Wash Club



*We are actively building our UK property pipeline and welcome all site introductions.  
Opportunities of all types are considered - freehold or leasehold.*

# Get in Touch

---

**Daniel Riahi**  
Managing Director

**E:** [daniel.riahi@rayswashclub.com](mailto:daniel.riahi@rayswashclub.com)

**M:** +44 (0) 7999 84 9999

**W:** [www.rayswashclub.com](http://www.rayswashclub.com)

Scan to Contact

