

CRITICAL ONE ENERGY

North America's Largest Undeveloped Antimony Discovery in a Top Tier Ontario District



Critical Mineral, Credible Path: Get antimony-first, gold-supported exposure in Ontario with district scale, insider alignment and a clean cap table, as defined catalysts (targeting, permitting, and a ~20,000 m VTEM-guided winter program) seek to convert historic work into modern, decision-grade results.

WHY NOW

Antimony is a critical mineral for clean energy, defense, and advanced tech. Western supply is constrained; prices reflect structural shortages and geopolitical risk. Critical One offers focused, early-cycle exposure in a top tier jurisdiction with road, power, and policy tailwinds.

INVESTMENT EDGE



STRATEGIC COMMODITY

Antimony exposure without high-risk jurisdictions.



GRADE + SCALE + RUNWAY

Compelling historic grades and district control with multiple untested targets.



CATALYST DENSITY

Permits, VTEM-led targets, and a sizable drill program to validate and expand the system.

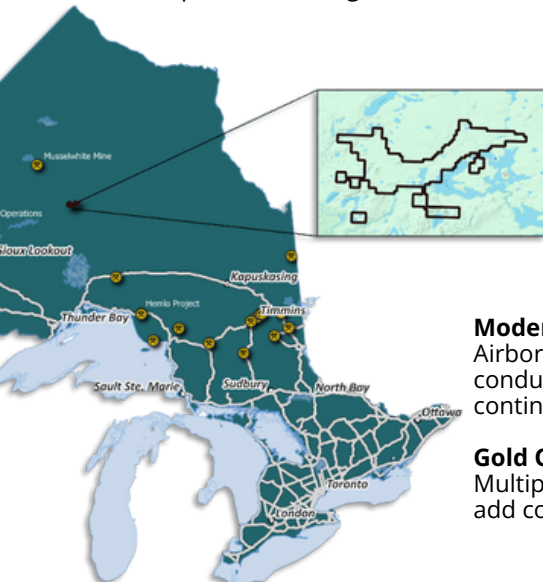


INSIDER ALIGNMENT

Largest shareholder is the CEO; zero debt, clean structure.

WHY THIS ASSET

Howells Lake in Ontario's Thunder Bay Mining Division is North America's largest undeveloped antimony resource. It's a district-scale system with high-grade showings at or near surface, modern geophysics focusing the drill plan, and open strike along the Howells contact.



Antimony System

High-grade Sb zones confirmed at V-3; remains open along strike and at depth.

District control, ideal access

Contiguous ground across the contact; near road/power/water; permitting advancing.

Modern Data-driven targeting

Airborne mag + VTEM isolate priority conductors; pads sequenced to verify continuity and extend along structural breaks.

Gold Optionality

Multiple high-grade gold intervals (incl. Slam) add co-product leverage.

HOWELLS LAKE PROJECT

24,887 HA

Project area

~30 KM

District-scale strike

~1.7 MT

Historic tonnage @ 1.4% Sb

UP TO 75% SB

High-grade antimony confirmed

WHAT'S NEXT: PROGRAM AT A GLANCE



TARGETING INPUTS → FINAL COLLARS

Airborne survey 1,407 line-km (75 m lines over V-3 & Slam; 150 m regional); interpretation by Alan King in progress to finalize ranked drill sites.



PERMITTING

Drill permits and bulk sample approvals advancing.



WINTER 2026 DRILL CAMPAIGN

~20,000 m of verification + step-outs at V-3 and priority conductors along the Howells contact.



ASSAYS & UPDATES

Phased results; ongoing target refinement across the ~30 km strike.

Historical data and assays; QP has not done sufficient work to classify estimates as current; down-hole intervals; true widths unknown. Reviewed by Bruce Durham, P.Geo (QP).

GEOLOGIC THESIS & TARGET MODEL

Contact-hosted antimony system: Mineralization tracks the Howells contact with high-grade showings at or near surface; room to expand along strike and down-dip.

Geophysics that points the drill: Airborne survey 1,407 line-km with 75 m spacing on V-3 & Slam (regional 150 m); interpretation by Alan King underway to refine conductors/structures into drill pads.

Open in multiple directions: Historic work + recent field checks indicate continuity potential beyond prior drilling.

Gold adds torque: High-grade gold within the system (incl. Slam); antimony remains the core driver.

2025 - 2026 DRILL PROGRAM BLUEPRINT

Program goals

- ◆ **Validate** → Convert historic hits with modern QA/QC and geometry for true widths.
- ◆ **Extend** → Step out along VTEM conductors/structural corridors to test scale.
- ◆ **Characterize** → Gather inputs for bulk-sample planning and early metallurgy.

Where meters go

- ◆ V-3 verification + near-surface extensions.
- ◆ Slam step-outs along priority conductors.
- ◆ Contact-parallel step-outs on additional ranked targets.
- ◆ Select gold-rich shoots for co-product leverage.

How it runs

- ◆ Sequenced pads guided by geophysics and structural mapping.
- ◆ Phased assays → dynamic target ranking and meter allocation.

OWNERSHIP & LIQUIDITY SNAPSHOT

As at Sep 15, 2025

Critical One is tightly held with ~35% insider ownership, zero debt, and an uncluttered structure. Liquidity is building alongside catalysts.

SHAREHOLDER	# OF SHARES	PERCENTAGE
FOUNDERS	~ 12.2 M	~ 24.3 %
MANAGEMENT & ADVISORS	~ 5.5 M	~ 10.9 %
INSTITUTIONAL INVESTORS	~ 3.7 M	~ 7.3 %
RETAIL INVESTORS	~ 29.0 M	~ 57.5 %

MARKET CAP \$54.0M	AVG. DAILY TRADING VOLUME 201.2K	SHARE PRICE \$1.07
-------------------------------------	---	-------------------------------------

50,422,708 O/S | 65,786,474 FD | 3,965,000 Options | 11,398,766 Warrants

Certain statements constitute "forward-looking information." This fact sheet is for information only and does not constitute an offer or solicitation to buy or sell any security. The Howells Lake "largest undeveloped antimony resource" and the East Zone tonnage (~1.7 Mt @ 1.4% Sb) are historic estimates and not current mineral resources as defined by NI 43-101; a Qualified Person has not completed sufficient work to classify these as current and the company is not treating them as current mineral resources. Intercepts are reported as drilled; true widths unknown unless stated otherwise. Any commodity prices referenced are point-in-time snapshots and not forecasts. Early-stage exploration projects are inherently risky; results may differ materially from expectations. Refer to the latest filings for complete information.

LEADERSHIP WITH DISCOVERY PEDIGREES & BILLION-DOLLAR EXITS



DUANE PARNHAM
FOUNDER & CEO

- ◆ Created \$1.5B+ in total shareholder value
- ◆ Largest shareholder



CHET IDZISZEK
DIRECTOR & GEO SUPPORT

- ◆ Initiated Howells Lake antimony discovery
- ◆ 1990 "Mining Man of the Year"
- ◆ Involved in multiple international discoveries



BRUCE DURHAM, P.GEO
SPECIAL ADVISOR

- ◆ 40+ years in Canadian gold geology
- ◆ Contributed to discovery of Hemlo Gold

At current levels, market cap implies ~US\$1/lb Sb on historic tonnage; early explorers often trade at 5-10% of in-ground pending drill validation.

YTD GROWTH

275%

As at Sep 15, 2025

CONTACT DETAILS

82 Richmond Street E., 4th Floor
Toronto, ON, M5C 1P1

LinkedIn: @criticaloneenergy

Website: www.criticaloneenergy.com

📞 +1 (416) 489-0092 🌐 ir@criticaloneenergy.com