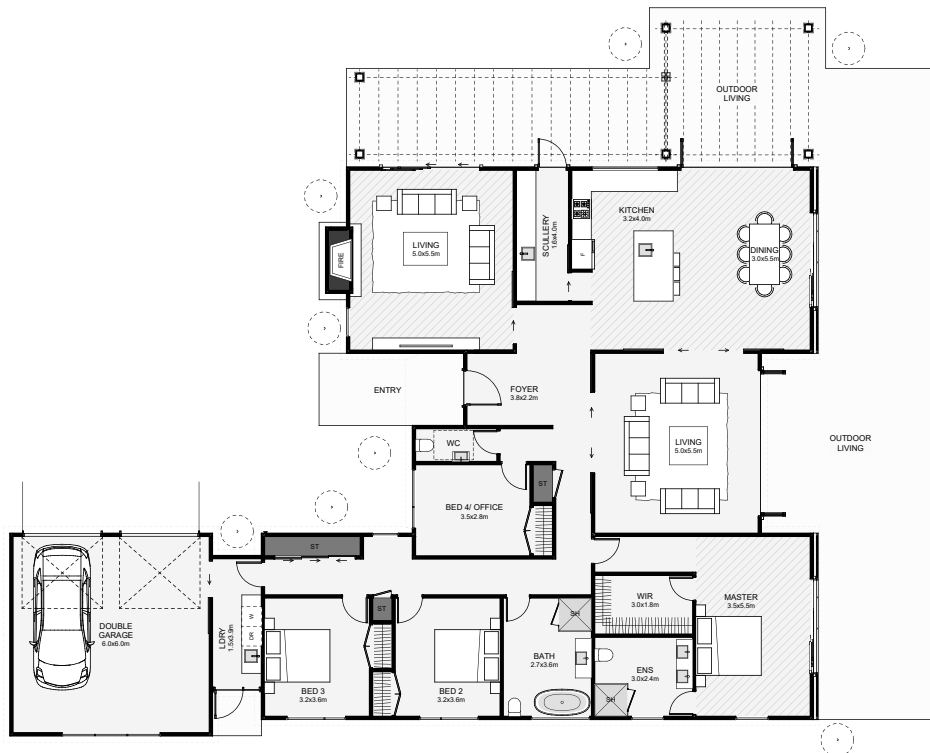




This four-bedroom modern barn-house is "H" shaped, designed to make the most of a large section with view outlooks from the main living, lounge and master bedroom and plenty of space for the driveway with the additional option to extend the garage. Two separate lounges, a scullery and outdoor living spaces that maximise all-day sun, all make this a remarkable family home.



**Floor Area: 277m<sup>2</sup>**

2   
 4   
 2.5   
 2   
 24.5m   
 21.2m

Contact us:

Ph: 021 931 013

E: [homes@buchananconstruction.co.nz](mailto:homes@buchananconstruction.co.nz)

[www.buchananhomes.co.nz](http://www.buchananhomes.co.nz)

