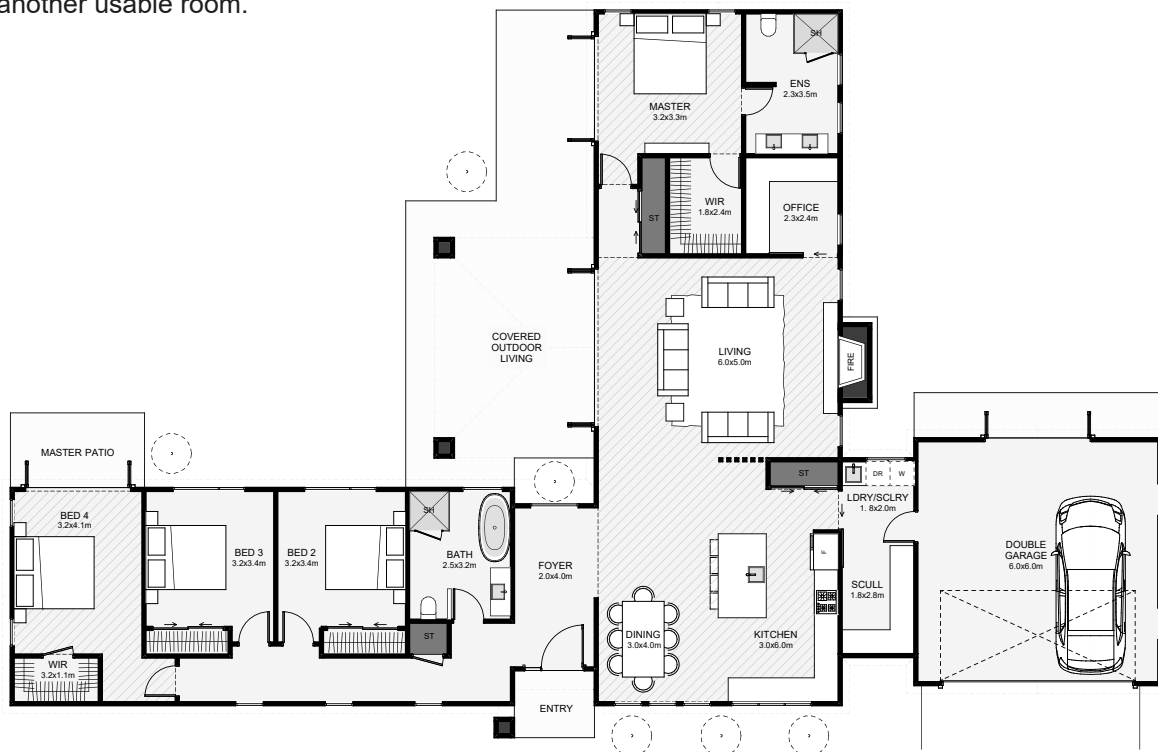




This four-bedroom modern barn-house is "T" shaped, designed to create a private back yard space that's also sheltered. Inside, the master is entirely separate from the other bedrooms; there's an additional office, a large kitchen and good sized outdoor living space with cover. The exterior doors in the garage open up the option of a double utilised space as another usable room.



Floor Area: 232m<sup>2</sup>

 2
  4
  2
  1
  28.7m
  18.2m

Contact us:

Ph: 021 931 013

E: [homes@buchananconstruction.co.nz](mailto:homes@buchananconstruction.co.nz)

[www.buchananhomes.co.nz](http://www.buchananhomes.co.nz)

