

Complete Visibility from Port to Port— and Everything In Between

Ocean freight moves over 80% of global trade. Guessing shouldn't be a part of it. Shipwell's Ocean Mode delivers real end-to-end full container load (FCL) tracking from origin to destination for smooth, compliant movement of goods worldwide.

Beyond Basic Container Tracking



Continuous visibility, not milestone gaps

From empty pickup, port gate-in, barge transfers, transshipment stops, discharge, and empty return, automatically track a container's entire journey by entering a MBOL. See what's happening between the milestones¹, not just the milestones themselves.



Exceptions flagged before they escalate

Receive container location updates frequently, with live status updates helping to surface critical issues like vessel delays, customs holds, or approaching last free days (LFD) for demurrage or detention. Prioritize shipments at risk to avoid costly surprises.



ETAs that actually makes sense

Shipping information comes in different formats, often with conflicting arrival times and inconsistent event names. Shipwell normalizes all of it, showing an AI-generated ETA alongside the port ETA for making better comparisons and more informed decisions.



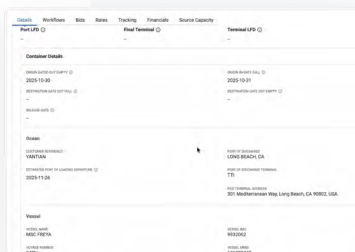
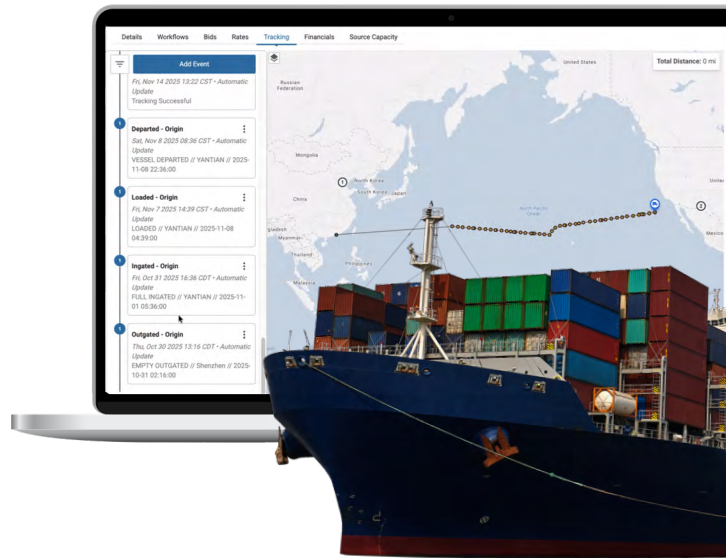
Exceed customer expectations

Increase customer satisfaction by providing visibility across shipments via a single login. Shippers can access tracking information alongside all documentation (including ocean-specific items like container IDs, NVOCC details and customs paperwork) within the shipment record, leading to quicker question response times.



One TMS, multimodal freight

Manage FCL ocean shipments alongside drayage², air, rail, and road modes. Handle order management, carrier selection, quoting, billing, and analytics in one place with zero toggling between systems or cross-platform data reconciliation.

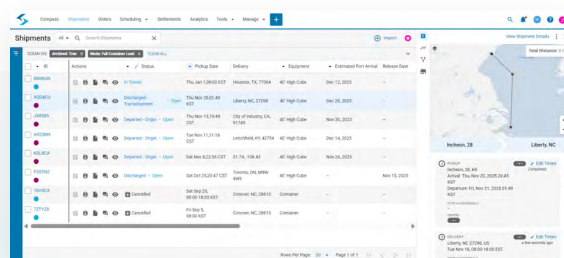


Ocean Mode in Action

A manufacturer imports raw materials from Asia in 40-foot containers. Their logistics manager spends 10+ hours weekly manually tracking while juggling conflicting ETAs from carriers, terminals, and freight forwarders—occasionally missing their LFD window and paying hefty fees. After booking shipments using Shipwell's Ocean Mode, they now have clear insight into critical dates, resulting in an average 30% reduction in demurrage costs.

A Complete Manifest

- **Automatic status updates:** Enter a Master Bill of Lading (MBOL) and Shipwell begins tracking immediately. Container location and status are updated in real-time within the platform.
- **Detailed container information:** View container ID, gate-in/gate-out dates, vessel name, voyage number, port of loading, port of discharge, terminal addresses, and customs status.
- **Demurrage and detention visibility:** Clearly see terminal last free day and port last free day directly in the shipment itinerary.
- **Barge and transshipment tracking:** Tracks barge loading, departure, arrival, and discharge at both origin and destination when vessels can't dock directly at port. Transshipment stops are clearly marked with arrival and departure events.
- **Exception management:** Have clear visibility to vessel delays, customs holds, and approaching free-day deadlines. Filter exceptions by priority, shipment, or date.
- **Seamless system integration:** Connect via API and webhooks to push tracking updates into ERP, OMS, or WMS platform. Real-time data flows into the tools teams already use.
- **Document management:** Upload and organize ocean-specific documents like MBOL, BOL, booking confirmations, commercial invoices, and customs paperwork—within each shipment record.
- **Custom reporting and analytics:** Build reports on container dwell time, carrier performance, detention & demurrage costs, and on-time delivery rates. Set up automated alerts for ETA changes, port arrivals, and customs activity.



Shipment Dashboard & Timeline View

Bottom Line Benefits

Gain real-time visibility, control, and collaboration across every dock. The interactive calendar connects carriers, suppliers, and warehouse teams on one platform—enabling instant updates, smart notifications, and streamlined communication.

- **Be more informed** by having all critical container details in one place, avoiding uncertainty and reactive management
- **Better customer service** by giving access to see where their shipments are at any time via a single link to the platform
- **Reduce detention and demurrage fees** by catching issues early and acting before last free days expire
- **Cut administrative overhead** by eliminating manual container tracking across carrier portals, terminal websites and freight forwarder emails
- **Improve collaboration** across internal teams with a single source of truth for container locations, vessel schedules, and customs status
- **Make faster decisions** with predictive ETAs, automated alerts for vessel delays and real-time visibility into demurrage risk
- **Lower dispute costs** with auditable records of gate-in/gate-out times, vessel movements, barge transfers, and customs clearance events

Join the shipping evolution®

Talk to one of our TMS experts today or learn more at shipwell.com.

Get a demo

1 To enable full Ocean Mode container tracking capabilities, please engage with your Customer Success Manager as service may require additional charges to achieve desired level of visibility.

2 Complete support of LCL shipments, including settlement, will be included in a future release.