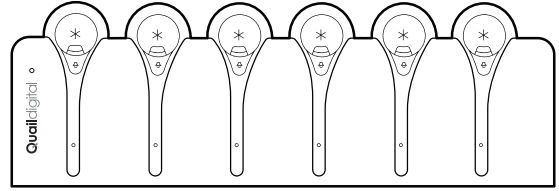


Volume
5 levels



Push-to-Talk - press and hold button while you talk, blue LED is on. Mic and blue LED off when you release button.

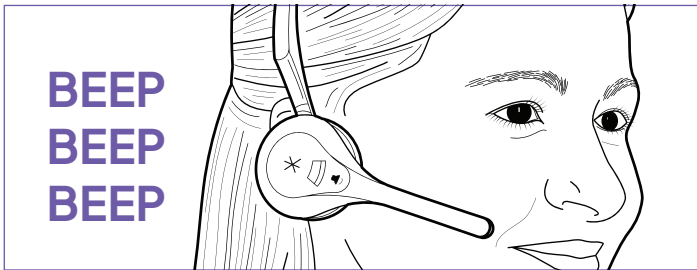
Talk Lock - press button once, hands-free operation, blue LED is on, **Mic is on**. Press button again to switch off.



LED slow pulses - charging



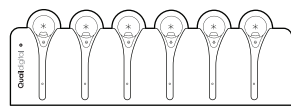
LED solid - fully charged



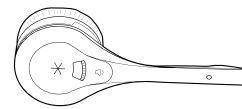
**BEEP
BEEP
BEEP**



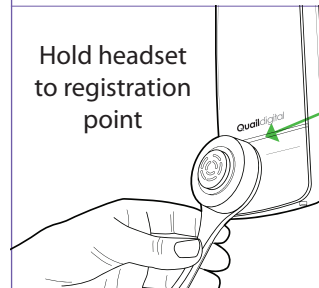
3 beeps
battery going flat



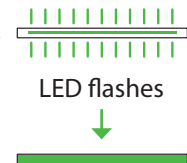
Place headset in charger



Headset LED fast flash - requires registering

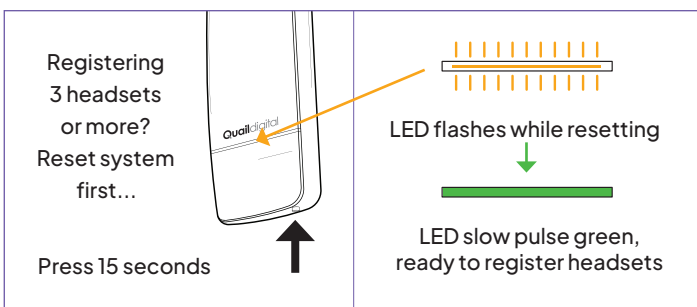


Hold headset
to registration
point



LED flashes

LED solid - registered,
ready to use



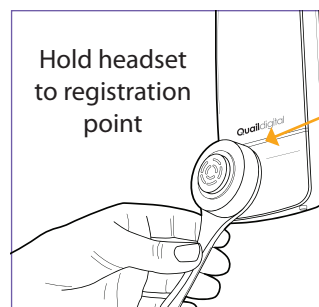
Registering
3 headsets
or more?
Reset system
first...

Press 15 seconds



LED flashes while resetting

LED slow pulse green,
ready to register headsets

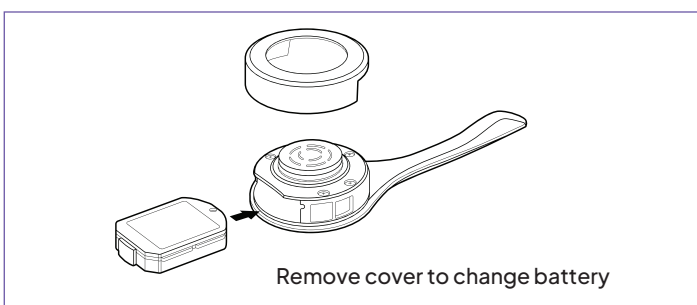


Hold headset
to registration
point

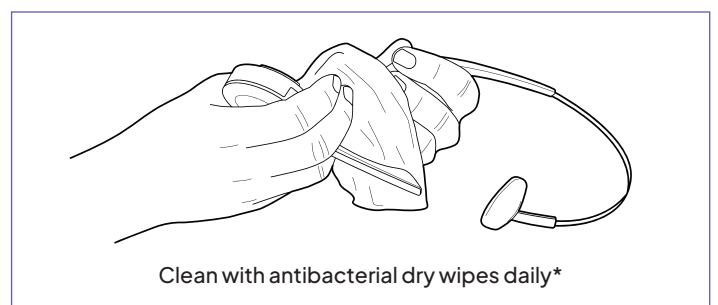


If LED shows red

repeat process after 30 secs,
until LED goes solid green



Remove cover to change battery



Clean with antibacterial dry wipes daily*

To view the Pro10 User Guide video, please visit:
<https://quaildigital.com/us/product/pro10>

***Recommendation:** clean headsets, headbands, neckbands, chargers and hangers daily or as your infection control guidelines. Clean with any antibacterial dry wipe which does not contain bleach or alcohol as either may cause premature wear to the headset housing; check the list of ingredients before use.

For Service Support:
+1 888 575 1010



Installation Instructions:

Wall mounted in close
proximity to the headset charger