

POWER CLAM GRAPPLE SERIES



PC08

Load capacity: 0,8 m² (8 ft²)



PC10

Load capacity: 0,9 m² (10 ft²)



PC12

Load capacity: 1,1 m² (12 ft²)

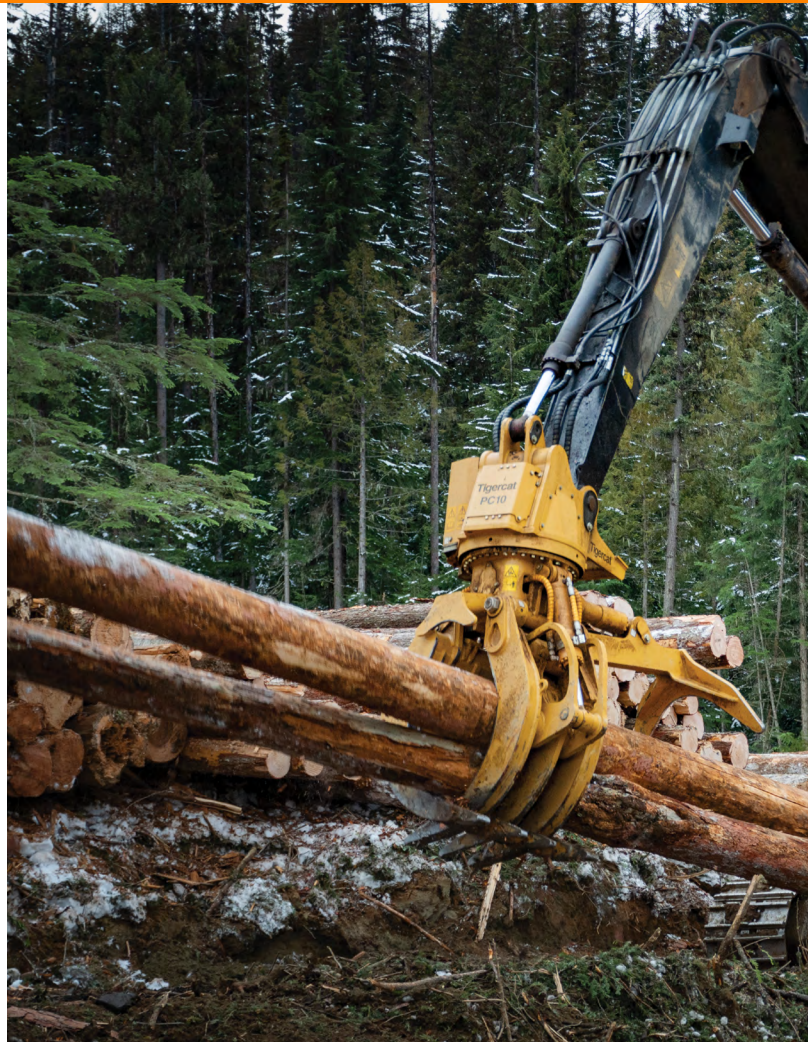
HEAVY DUTY POWER CLAM GRAPPLES
TO MATCH THE DURABILITY AND
PERFORMANCE CAPABILITIES OF
TIGERCAT LOGGERS.

Tigercat®

POWER CLAM GRAPPLE SERIES

PC08 | PC10 | PC12

With an emphasis on performance and long-term durability, Tigercat power clam grapples provide an end-to-end loading solution for Tigercat 875 and 880 series loggers.



PERFORMANCE

A carefully designed tong profile effortlessly rolls the wood into the grapple for quick load cycles. The grapples also have an impressive minimum closing diameter to easily handle small strays.

BUILT TO LAST

Tigercat power clam grapples are made with high quality steel and heavy duty components designed to withstand the harshest forestry environments. Cushioned cylinders and a soft stop swing drive hydraulic circuit takes the shock loads out of the structure to promote extended grapple life.

A sealed electrical box protects electrical components from the elements.



The expansive 45° sweep of the outriggers, along with the tapered tong profile, provides exceptional control of any size tree.



MAKE EVERY CYCLE COUNT

PRODUCTIVITY AND EFFICIENCY

- ▶ Jaw profile effortlessly rolls logs into the grapple for quick load cycles
- ▶ Slew drive uses a fixed displacement piston motor coupled with a two-stage planetary gearbox providing ample speed and torque
- ▶ Multi-section control valve with easy spool access provides improved flow and enhanced jaw timing

DURABLE, WELL PROTECTED COMPONENTS

- ▶ Box-style tongs fabricated from high strength steel for long-life
- ▶ Replaceable weld-on tine tips are made from abrasion-resistant steel for added durability
- ▶ Jaw cylinder hoses are well guarded but easily serviced with no external hydraulic tubing
- ▶ Hoses are routed on top of the boom and under the connecting pin for maximum protection
- ▶ Well thought out cylinder guard design allows easy hose access and eliminates the need for covers
- ▶ Tigercat designed crossover relief valve with soft stop ramping relief to reduce shock loads

Excellent cylinder and hose guarding. The boom hoses are tucked in tight and less likely to catch the truck stakes.



Designed to grip a single 150 mm (6 in) diameter stem when completely closed.



PC08

PC10

PC12

DIMENSIONS

WIDTH	1 145 mm (45 in)	1 145 mm (45 in)	1 145 mm (45 in)
WIDTH with optional outrigger	1 850 mm (73 in)	1 850 mm (73 in)	1 850 mm (73 in)
HEIGHT	2 490 mm (98 in)	2 515 mm (99 in)	2 615 mm (103 in)
DEPTH	1 830 mm (72 in)	1 830 mm (72 in)	1 830 mm (72 in)
WEIGHT	2 620 kg (5,775 lb)	2 700 kg (5,950 lb)	2 835 kg (6,250 lb)
WEIGHT with optional outrigger	2 755 kg (6,075 lb)	2 835 kg (6,250 lb)	2 970 kg (6,550 lb)
LOAD CAPACITY	0,7 m² (8 ft²)	0,9 m² (10 ft²)	1,1 m² (12 ft²)
MAXIMUM OPENING	2 310 mm (91 in)	2 310 mm (91 in)	2 465 mm (97 in)
MINIMUM CLOSED DIAMETER	150 mm (6 in)	150 mm (6 in)	150 mm (6 in)

HYDRAULIC SYSTEM

CYLINDERS, JAW	(2) 100 mm (4 in) bore	(2) 100 mm (4 in) bore	(2) 100 mm (4 in) bore
CYLINDER, OUTRIGGER optional	(1) 100 mm (4 in) bore	(1) 100 mm (4 in) bore	(1) 100 mm (4 in) bore

SWING DRIVE

GEARBOX	2-stage planetary	2-stage planetary	2-stage planetary
DRIVE MOTOR	Piston	Piston	Piston
CONTINUOUS ROTATION	High press rotary manifold seals	High press rotary manifold seals	High press rotary manifold seals
CROSSOVER RELIEF	Soft stop, low pressure side charged	Soft stop, low pressure side charged	Soft stop, low pressure side charged
MAXIMUM SWING TORQUE	33 895 Nm (300,000 lbf in)	33 895 Nm (300,000 lbf in)	33 895 Nm (300,000 lbf in)

CONTROL SYSTEM

VALVE IN HEAD	Proportional controlled Matched to Tigercat electrical outputs	Proportional controlled Matched to Tigercat electrical outputs	Proportional controlled Matched to Tigercat electrical outputs
---------------	---	---	---

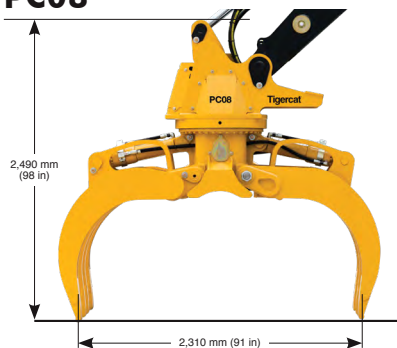
RECOMMENDED CARRIERS

	875, 880	875, 880	875, 880
--	----------	----------	----------

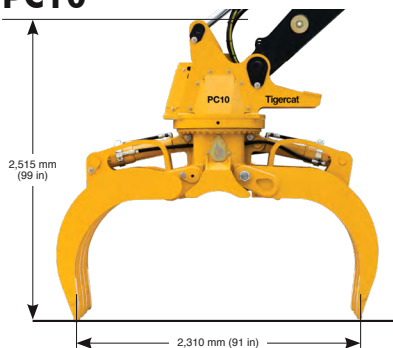
OPTIONAL EQUIPMENT

	Powered outrigger, 1 120 mm (44 in) sweep	Powered outrigger, 1 120 mm (44 in) sweep	Powered outrigger, 1 120 mm (44 in) sweep
--	---	---	---

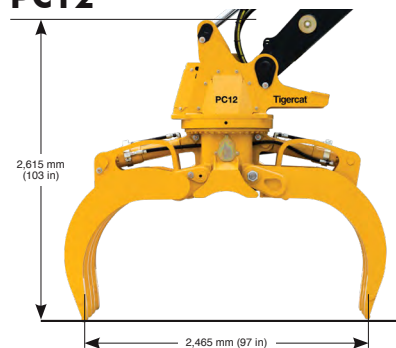
PC08



PC10



PC12



TIGERCAT RESERVES THE RIGHT TO AMEND THESE SPECIFICATIONS AT ANY TIME WITHOUT NOTICE. WEIGHTS AND DIMENSIONS MAY VARY SUBJECT TO MACHINE OPTIONS AND CONFIGURATIONS. FOR THE MOST CURRENT SPECIFICATIONS PLEASE REFER TO THE TIGERCAT WEBSITE OR MOBILE APP. TIGERCAT PRODUCTS MAY BE COVERED BY ONE OR MORE OF THE FOLLOWING US OR CANADIAN PATENTS, OR CORRESPONDING PATENTS IN OTHER COUNTRIES. REFER TO VIRTUAL PATENT MARKINGS: WWW.TIGERCAT.COM/PATENTS.

EMAIL	comments@tigercat.com
PHONE	519.753.2000
WEBSITE	www.tigercat.com
ADDRESS	54 Morton Ave. East, Brantford, Ontario Canada, N3R 7J7
MAIL	Box 637 N3T 5P9

© 2001 - 2020 Tigercat International Inc. All Rights Reserved. TIGERCAT, WIDERANGE, TURNAROUND, ER, EHS, LOW-WIDE, TEC, REMOTELOG, and their respective logos, TOUGH RELIABLE PRODUCTIVE, TIGERCAT TV, "Tigercat Orange" and BETWEEN THE BRANCHES, as well as corporate and product identity, are trademarks of Tigercat International Inc., and may not be used without permission. TIGERCAT, TURNAROUND, WIDERANGE, EHS, LOW-WIDE, ER and REMOTELOG, and their respective logos are registered trademarks of Tigercat International Inc.