



SOLID
TO SUCCEED

AS

ARTICULATED BOOM LIFT XGA16ACK

Comply with AS

Standard configuration

- Dual-entry platform with full-open gate
- 12V DC auxiliary power
- Axle oscillation
- Lowering and motion alarm
- Tilt alarm
- Overload alarm
- Motor overload protection
- Emergency stop devices on platform and chassis
- Emergency power unit
- 2-wheel braking system
- Platform auto leveling
- Proportional joystick control
- Drive enable
- Full-time positive traction drive
- Telematics front-end interface
- Anti-entrapment protection device
- Double-load amplitude control
- Solid non-marking tire
- Thumb rocker steering



Working height
16.5 meters



Lift capacity
256/350Kg



Electric
power



Optional configuration

- Platform power
- Tool tray
- Working light assembly
- Platform with half-height mesh

XCMG FIRE-FIGHTING SAFETY EQUIPMENT CO.,LTD

No.17 Zhujiang East Road, Hi-Tech Development Zone, Xuzhou, Jiangsu, China
mewp@xcmg.com

XGA16ACK



SOLID
TO SUCCEED

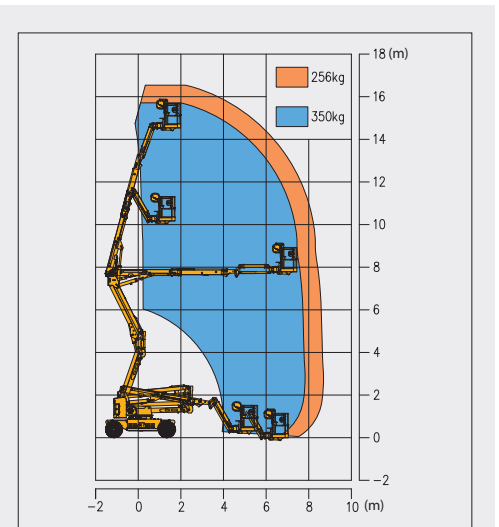
Articulated Boom Lift-Electric

Item	Metric	
Dimension		
Overall dimension - stowed	Length	6785mm
	Width	2320mm
	Height	2350mm
Overall dimension - transported	Length	5500mm
	Width	2320mm
	Height	2630mm
Platform dimensions	Length	1800mm
	Width	760mm
	Height	1150mm
Wheelbase		2360mm
Fly jib length		1420mm
Min. ground clearance		250mm

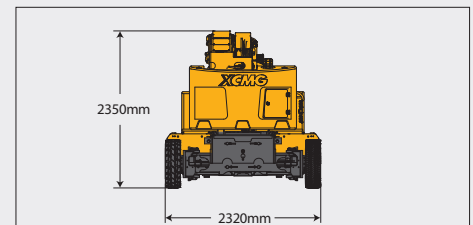
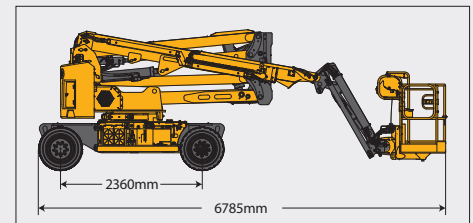
Performance	
Max. working height	16.5m
Max. platform height	14.5m
Max. outreach	8.6m
Max. up and over clearance	7.6m
Max. lift capacity	256kg (unlimited)/350kg (limited)
Max. platform occupancy	2/3
Max. chassis allowable angle	X-5° / Y-5°
1st boom luffing range	0 ~ +72°
2nd boom luffing range	0 ~ +73°
Fly boom luffing range	-65 ~ 70°
Turntable rotation	360°
Platform rotation	160°
Total weight	7400kg
Driving speed (stowed)	4.8km/h
Driving speed (raised or extended)	0.6km/h
Min. turning radius (inside/ outside)	2500mm/5000mm
Turntable tailswing (stowed)	0mm
Max. gradeability	30% (16.7°)

Power source	
Control	12 V DC proportional control
Traveling motor	3.3 kW/32 V
Emergency power supply	12 V/120 Ah
Main power source - battery	48 V/400Ah
Main power source - charger	48 V/40 A
Hydraulic tank capacity	103L

Tire	
Tire size	720 mm×220 mm
Tire ground pressure	10.16kg/cm ²
Driving wheels	2
Braking wheels	2
Steering wheels	2



Stowed



Trans

