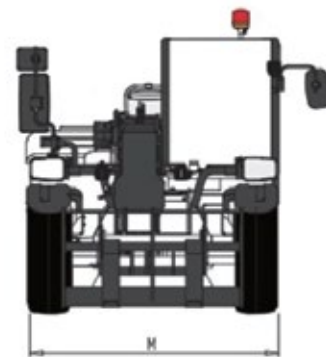
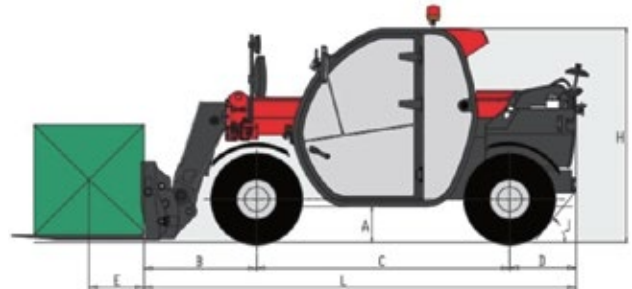
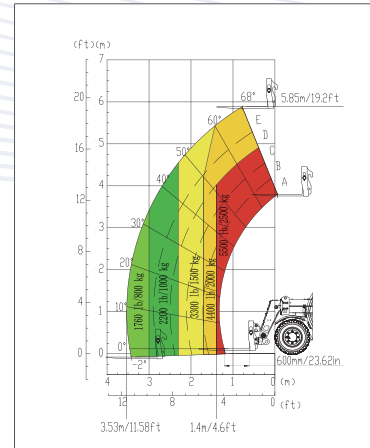


# TELEHANDLERS XT2506E

## ► LOAD CHART



## ► STATIC DIMENSIONS

Dimensions		Metric
Min. Ground Clearance	A	330mm
Front Overhang	B	1025mm
Wheelbase	C	2300mm
Rear Overhang	D	605mm
Load Center Distance	E	600mm
Overall Length	L	3930mm
Overall Height	H	1975mm
Overall Width	M	1835mm
Approach Angle	I	/
Departure Angle	J	50°

# XT2506E

## ▶ PARAMETERS

Parameters	Metric
<b>Dimensions</b>	
Overall Length	3930 mm
Overall Width	1835 mm
Overall Height	1975 mm
Wheelbase	2300 mm
Track Width	1500 mm
Min. Ground Clearance	330 mm
Fork Dimensions	1200 × 122 × 40mm
<b>Weight and Tyres</b>	
Unladen Weight (with forks)	5250 kg
Standard Tyres / Tire Size	12-16.5
<b>Performance</b>	
Rated Load	2500 kg
Load Center Distance	600 mm
Max. Lifting Height (To Upper Plane Of Forks)	5.85 m
Lift Capacity At Max. Lifting Height	2000 kg
Max. Outreach (Boom Being Horizontal, Load Center Distance To The Front End Of Tyres)	3.53 m
Lift Capacity At Max. Outreach	800 kg
Boom Lifting Time	≤ 7.5 s
Boom Lowering Time	≤ 5.5 s
Boom Extension Time	≤ 4.8 s
Boom Retraction Time	≤ 3.5 s
Fork Dump Time	≤ 3.2 s
Fork Crowd Time	≤ 3.2 s
Boom Lifting Range	-2°~68°
Fork Tilt Angle Range (Boom Being Horizontal)	-12°~117°
Max. Travel Speed	20 km/h
Max. Traction Force	≥ 38 kN
Min. Turning Radius	≤ 3310 mm
<b>Engine</b>	
Travel Motor-Voltage	309 V
Drive Motor-Max. Power	70 kW
Working Motor-Voltage	309 V
Working Motor-Max. Power	50 kW
Battery Specification	307.2 V/160 Ah (standard) 307.2 V/228 Ah (optional)
Charging Socket Specification	380 VAC/32 A (slow) 200 A (fast)
<b>Transmission</b>	
Number of Gears (Forward/Reverse)	1/1
Transmission Type	Motor drive
Steering Mode	4-wheel steer
Drive Type	4 × 4
<b>Hydraulic System</b>	
Hydraulic Pump Type	Plunger Pump
Hydraulic System Pressure	28 MPa
Hydraulic System Flow	100 L/min
Hydraulic Tank Capacity	100 L

## ▶ STANDARD CONFIGURATION

- **Cab**
  - FOPS/ROPS Certified Cab
  - Air Conditioning
  - 4-Way Adjustable Steering Column
  - 8" Main Display
  - 4.3" Sub Display
  - Radio
  - Bluetooth Hands-Free
  - 12 V Power Outlet
  - USB/Type-C Charging Port
  - Roof Sun Blind
  - Front Sun Visor
  - Interior Rearview Mirror
  - Exterior Rearview Mirror
  - Reversing Camera
  - Front Wiper
  - Rear Wiper
  - Roof Wiper
  - Rear Window Defroster
  - Fire Extinguisher
  - Dual Rotating Beacon (Amber/Amber)
  - Air-Suspended Fabric Seat
  - Joystick Shift
  - Reversing Buzzer
  - Cup Holder
  - Emergency Hammer
  - Seat Belt Reminder
  - Multifunction Proportional Joystick
  - Emergency Stop Switch
  - License Plate Light
- **Power Transmission**
  - 4-Wheel Drive
  - 3 Steering Modes
  - Rear Axle Center Position Display
  - Front Axle Limited-Slip Differential
  - Wet Brake System
- **Electrical System**
  - Torque Limiter
  - Working Envelope Display
  - Joystick Lock
  - Boom-Mounted Work Light
  - Cab Front And Rear Work Lights
  - Seat Belt Unbuckled Alarm
  - Seat Occupancy Sensor/Unoccupied Alert
- **Hydraulic System**
  - Open-Center Load Sensing System
  - Boom Tip Damping System
  - Quick Coupler Pressure Relief
  - Automatic Fork Leveling
- **Miscellaneous**
  - Safety Rod
  - Rear Tow Hitch

## ▶ OPTIONAL CONFIGURATION

- Dual-Rotating Alarm Light (Yellow+Green)
- Air Suspension Leather Seat
- Electrically Adjustable Right Exterior Rear-View Mirror
- Phone Stand
- Front Falling Object Guard
- Foam-Filled Tyres
- Parking Wedge
- Wheel-Nut Indicators
- Attachment Electrics
- White-Noise Reversing Alarm
- Multi-Circuit Auxiliary Hydraulics for Attachments

## ▶ OPTIONAL ATTACHMENTS

- Fork
- Bucket
- Hook
- Rotator