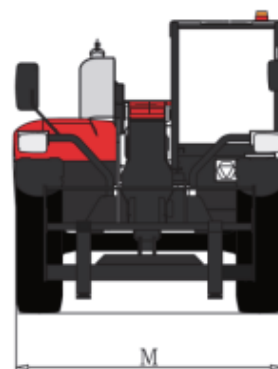
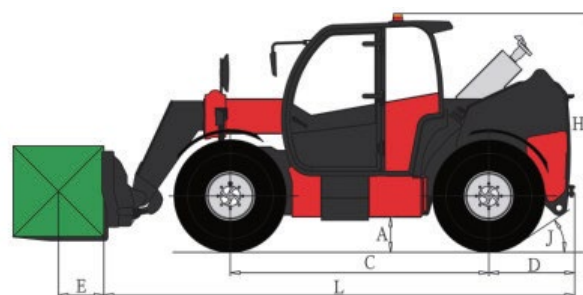
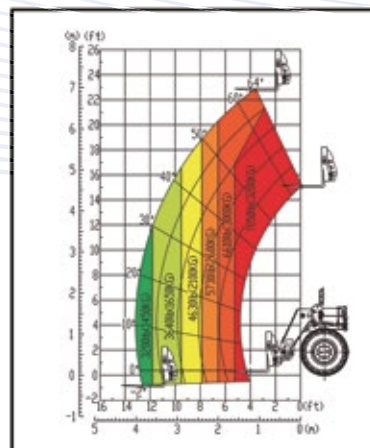


TELEHANDLERS

XT3207KH



► LOAD CHART



► STATIC DIMENSION

Dimensions		Metric
Min. Ground Clearance	A	420 mm
Front Overhang	B	/
Wheel Base	C	2850 mm
Rear Overhang	D	910 mm
Load Center Distance	E	600 mm
Overall Length	L	4960 mm
Overall Height	H	2400 mm
Overall Width	M	2320 mm
Approach Angle	I	/
Departure Angle	J	42.5°

XT3207KH

▶ PARAMETER

Parameter	Metric
Dimension	
Overall Length	4960 mm
Overall Width	2320 mm
Overall Height	2400 mm
Wheel Base	2850 mm
Track Width	1860 mm
Min. Ground Clearance	420 mm
Fork Dimensions	1200×122×45 mm
Weight and tires	
Machine Weight (With Fork)	7700 kg
Tire Specification	460/70R24
Performance	
Rated Load	3200 kg
Load Center Distance	600 mm
Max. Lifting Height (To Upper Plane Of Forks)	711 m
Lift Capacity At Max. Lifting Height	3200 kg
Max. Outreach (Boom Being Horizontal, Load Center Distance To The Front End Of Tires)	3.9m
Lift Capacity At Max. Outreach	1200 kg
Boom Lifting Time	8.5s
Boom Lowering Time	7.5s
Boom Extension Time	8.5s
Boom Retraction Time	7s
Fork Dump Time	≤ 4.5s
Fork Crowd Time	≤ 3.5s
Boom Lifting Range	-2° ~ 63.5°
Fork Tilt Angle Range (Boom Being Horizontal)	-14° ~ 132°
Max. Travel Speed	40 km/h
Max. Traction Force	≥ 60kN
Min. Turning Radius	≤ 3900 mm
Power System	
Power Source	Diesel Engine
Engine Brand/Model	DEUTZ BF4M2012
Number Of Cylinders	4
Engine Rated Power	72kW
Emissions	Stage III
Rated Speed	2200r/min
Max. Torque @ Rpm	375N.m@1600RPM
Fuel Tank Capacity	120L
Transmission System	
Numbers Of Gears (Forward/Reverse)	CVT
Transmission Type	Hydrostatic Transmission
Steer Mode	4-Wheel Steer
Drive Mode	4x4
Hydraulic System	
Hydraulic Pump Type	Plunger Pump
Hydraulic System Pressure	28Mpa
Hydraulic System Flow	160L/min
Hydraulic Tank Capacity	145 L

▶ STANDARD CONFIGURATION

- Cab
- FOPS And ROPS Certification
- Air Conditioning
- 4-Way Adjustable Steering Column
- 10" Main Display
- 4.3" Sub Display
- Radio
- Bluetooth Call
- 12 V Power Outlet
- USB/Type-C Charging Port
- Top Sun Visor
- Front Sun Visor
- Interior Rearview Mirror
- Exterior Rearview Mirror
- Reversing Camera
- Front Wiper
- Rear Wiper
- Top Wiper
- Rear Window Defroster
- Fire Extinguisher
- Dual-Rotating Alarm Light (Yellow+Yellow)
- Air-Suspended Fabric Seat
- Reversing Buzzer
- Cup Holder
- Emergency Hammer
- Seat Belt Unfastened Detection Function
- Multifunctional Proportional Handle
- Emergency Stop Switch
- License Plate Light Assembly
- Power Transmission
- 4-Wheel Drive
- 3 Steering Modes
- Rear Axle Center Position Display
- Engine Inlet Heating
- Front Axle Limited-Slip Differential
- Wet Brake System
- Electrical System
- Torque Limiter
- Working Envelope Display
- Joystick Lock
- Boom-Mounted Work Light
- Cab Front And Rear Work Lights
- Seat Belt Unbuckled Alarm
- Seat Occupancy Sensor/Unoccupied Alert
- Hydraulic System
- Open-Center Load Sensing System
- Boom Tip Damping System
- Quick Coupler Pressure Relief
- Automatic Fork Leveling
- Others
- Fan Reverse Dust Removal
- Safety Rod
- Front Tow Hitch
- Rear Tow Hitch
- Manual Centralized Lubrication
- Parking Wedge

▶ OPTIONAL CONFIGURATION

- Dual-Rotating Alarm Light (Yellow+Green)
- Air Suspension Leather Seat
- Ventilated & Heated Fabric Seat
- Ventilated & Heated Leather Seat
- Right Electric Rearview Mirror
- Phone Stand
- Front Falling Object Guard
- Boom Suspension
- Wheel-Nut Indicators
- Foam-Filled Tires
- Hydraulic Quick Coupler
- JCB Q-Fit Quickhitch
- Attachment Electrical
- White-Noise Reverse Alarm
- Multi-Circuit Hydraulic System For Attachments
- Manual Tow Hook

▶ OPTIONAL ATTACHMENTS

- Fork
- Bucket
- Hook
- Rotator