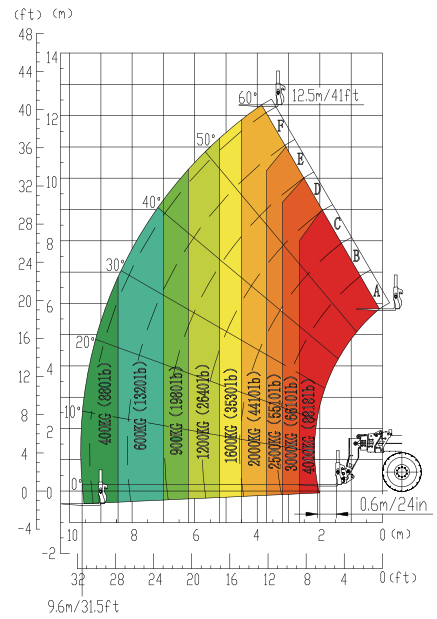
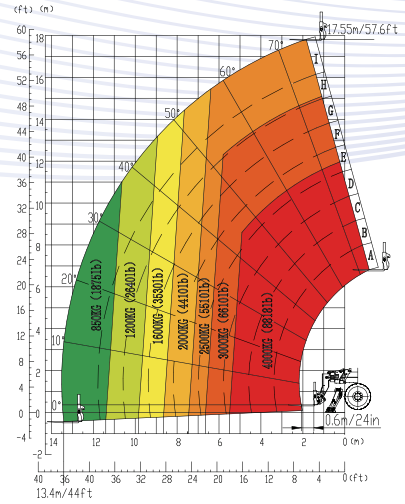


TELEHANDLERS XT4018KH

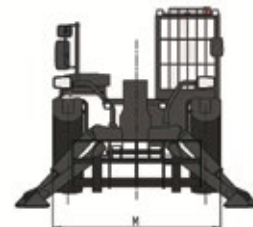
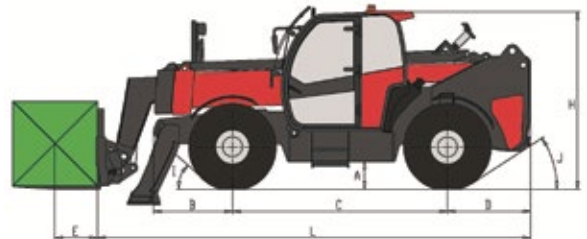


LOAD CHART



STATIC DIMENSION

Dimensions		Metric
Min. Ground Clearance	A	370mm
Front Overhang	B	2010mm
Wheel Base	C	3050mm
Rear Overhang	D	1210mm
Load Center Distance	E	600mm
Overall Length	L	6270mm
Overall Height	H	2480mm
Overall Width	M	2320mm
Approach Angle	I	40°
Departure Angle	J	33°



XT4018KH

▶ PARAMETER

Parameter	Metric
Dimension	
Overall Length	6270 mm
Overall Width	2320 mm
Overall Height	2480 mm
Wheel Base	3050 mm
Track Width	1920 mm
Min. Ground Clearance	370 mm
Fork Dimensions	1200×122×50 mm
Weight and tires	
Machine Weight (With Fork)	12200 kg
Tire Specification	400/80-R24
Performance	
Rated Load	4000 kg
Load Center Distance	600 mm
Max. Lifting Height (To Upper Plane Of Forks)	17.55 m
Lift Capacity At Max. Lifting Height	2500 kg
Max. Outreach (Boom Being Horizontal, Load Center Distance To The Front End Of Tires)	13.4 m
Lift Capacity At Max. Outreach	850 kg
Boom Lifting Time	≤ 16 s
Boom Lowering Time	≤ 18 s
Boom Extension Time	≤ 18 s
Boom Retraction Time	≤ 15 s
Fork Dump Time	≤ 4 s
Fork Crowd Time	≤ 4 s
Boom Lifting Range	-3° ~ 72°
Fork Tilt Angle Range (Boom Being Horizontal)	-12° ~ 114°
Max. Travel Speed	28 km/h
Max. Traction Force	≥ 60 kN
Min. Turning Radius	≤ 3920 mm
Frame Leveling Angle	± 10°
Power System	
Power Source	Diesel Engine
Engine Brand/Model	Deutz BF4M2012
Number Of Cylinders	4
Engine Rated Power	72Kw
Emissions	Stage III
Rated Speed	2200 r/min
Max. Torque @ Rpm	375N.m@1600RPM
Fuel Tank Capacity	140L
Transmission System	
Numbers Of Gears (Forward/Reverse)	2/2
Transmission Type	Hydrostatic Transmission
Steer Mode	4-Wheel Steer
Drive Mode	4×4
Hydraulic System	
Hydraulic Pump Type	Plunger Pump
Hydraulic System Pressure	28Mpa
Hydraulic System Flow	150L/min
Hydraulic Tank Capacity	178L

▶ STANDARD CONFIGURATION

- Cab
- FOPS And ROPS Certification
- Air Conditioning
- 4-Way Adjustable Steering Column
- 10" Main Display
- 4.3" Sub Display
- Radio
- Bluetooth Call
- 12 V Power Outlet
- USB/Type-C Charging Port
- Top Sun Visor
- Front Sun Visor
- Interior Rearview Mirror
- Exterior Rearview Mirror
- Reversing Camera
- Front Wiper
- Rear Wiper
- Top Wiper
- Rear Window Defroster
- Fire Extinguisher
- Dual-Rotating Alarm Light (Yellow+Yellow)
- 2-Position Shift (Steering Column/Joystick)
- Air-Suspended Fabric Seat
- Reversing Buzzer
- Cup Holder
- Emergency Hammer
- Seat Belt Unfastened Detection Function
- Multifunctional Proportional Handle
- Emergency Stop Switch
- License Plate Light Assembly
- Power Transmission
- 4-Wheel Drive
- 3 Steering Modes
- Rear Axle Center Position Display
- Engine Inlet Heating
- Front Axle Limited-Slip Differential
- Wet Brake System
- Suspension Damping System
- Outrigger Position Detection Function
- Electrical System
- Torque Limiter
- Working Envelope Display
- Joystick Lock
- Boom-Mounted Work Light
- Cab Front And Rear Work Lights
- Seat Belt Unbuckled Alarm
- Seat Occupancy Sensor/Unoccupied Alert
- Hydraulic System
- Open-Center Load Sensing System
- Boom Tip Damping System
- Quick Coupler Pressure Relief
- Others
- Fan Reverse Dust Removal
- Safety Rod
- Manual Towing Hook
- Manual Centralized Lubrication

▶ OPTIONAL CONFIGURATION

- Dual-Rotating Alarm Light (Yellow+Green)
- Air Suspension Leather Seat
- Ventilated & Heated Fabric Seat
- Ventilated & Heated Leather Seat
- Right Electric Rearview Mirror
- Phone Stand
- Front Falling Object Guard
- Wheel-Nut Indicators
- Parking Wedge
- Hydraulic Quick Coupler
- JCB Q-Fit Quickhitch
- Attachment Electrical
- White-Noise Reverse Alarm
- Multi-Circuit Hydraulic System For Attachments

▶ OPTIONAL ATTACHMENTS

- Fork
- Bucket
- Hook
- Rotator