

# EQUIPMENT

Item contents	STD	OPT	Item contents	STD	OPT
<b>Powertrain</b>			<b>CAB</b>		
Engine intake preheating	●		Mirror heating		○
Hydrostatic continuously variable transmission	●		Rear wiper	●	
Front/rear axle 100% differential lock		○	ROPS&FOPS cab	●	
Electric parking brake		○	Protective cab screen		○
Dry service brake	●		Coat hook	●	
Emergency stop	●		Magazine bag	●	
Independent heat dissipation	●		Radio/USB player	●	
Manual accelerator control	●		Wrist supports and armrests	●	
Speed limited	●		24V to 12V DC converter (20A)		○
Traction control	●		Cab lock/key	●	
Radial tyre 16/70-20	●		Cooling and heating air-conditioner	●	
Tubeless tyre 405/70R20		○	3-inch retractable safety belt		○
Wide base tyre 560/45R22.5		○	andadjustable air suspension (heated)		○
<b>Hydraulic System</b>			Air suspension seat		○
Third function quick coupler	●		Cup holder	●	
Hydraulic lock	●		Single brake pedal	●	
Quick coupler oil cylinder lock	●		Start-up	●	
Diagnostic pressure joint	●		FNR gear	●	
Hydraulic oil cooler	●		Safety	●	
Anti-explosion valve		○	Fire extinguisher	●	
Ride control		○	Fuel tank filler cap lock		○
Electric controlled third function	●		Boom safe lever	●	
Third function flow lock	●		Emergency steer		○
<b>Electrical System</b>			<b>Bucket</b>		
Electrical air cleaner blockage alert	●		1.0m³ standard bucket	●	
Fuel level	●		1.2m³ light material bucket		○
Engine coolant temperature	●		1.5m³ light material bucket		○
Transmission oil temperature display	●		EU standard quick coupler	●	
Engine tachometer	●		US skid steer quick coupler		○
Transmission oil temperature display	●		<b>Attachment</b>		
Fuel tank display	●		Cleaner	○	
Working hour display	●		Auger	○	
Battery main switch	●		Breaker	○	
Electric horn	●		Excavator	○	
Parking brake	●		Trencher	○	
High beams	●		Planer	○	
Turn signal	●		Tree transplanter	○	
2 Rear combination lights	●		Dozer blade	○	
(reserve,turn signal, clearance light,brake lights)	●		Industrial grapple	○	
2 Front roof working light (LED)	●		Forklift	○	
2 Rear roof working light (LED)	●		Snow blade	○	
Main light	●		Hay spear	○	
2 Working light on the rear hood(LED)	●		Deicer	○	
Working light	●		Vibratory compactor	○	
Rotating warning light	●		Hook	○	
<b>Other</b>			Oil drum clamp	○	
Counterweight	●		Clamping plier	○	
Traction pin	●		Grass grabber	○	
Handrails/ladders/ platforms/pedals	●		Snow thrower	○	
Splash guard (rear)	●		Concrete mixer	○	
Splash guard (front)	●				
ECD (Engine Connection Diagnosis)	●				
Anti-corrosion spray		○			
Toolkit	●				
Reversible fan	●				



# XC918-HST

## WHEEL LOADER

Operating Weight **6000kg**    Bucket Capacity **1.0m³**    Rated Power **53.3kW**



### XCMG Earthmoving Machinery Business Division

Add.No. 99 Kunpeng North Road, Economic and Technological Development Zone, Xuzhou City, Jiangsu Province  
Zip code:221122



XCMG Wheel Loader | 🔍



The XC918-HST Compact Wheel Loader is our next-generation hydrostatic loader developed by XCMG. This compact 0.8-ton loader not only delivers powerful performance but also ensures smooth operation. It is widely utilized in municipal construction, animal husbandry, agriculture, and forestry. XC908-HST is recognized for its comfort, high maintainability, and reliability. Its precise intelligent control technology offers an extraordinary driving experience, making it suitable for operation in narrow spaces or complex terrains, enabling it to efficiently complete various tasks.

## PERFORMANCE

The wheel loader is equipped with Yanmar engine and utilizes hydrostatic transmission technology which offers real-time monitor of hydraulic transmission components' working status, ensuring optimal power transmission system matching. Our loader delivers stronger power, higher efficiency, lower fuel consumption and enhanced overall performance.

## FLEXIBILITY

XC918 Loader offers exceptional flexibility for operations in confined spaces making it ideal for navigating through narrow alleys, indoor locations and crowded construction sites. The XC918 can quickly switch between various attachments, including buckets, forks, snowplows and breakers, allowing it to adapt to various work tasks.

## MAINTENANCE

The optimized design ensures the proper structure of main components. The lubrication interface, pressure measurement interface and other interfaces are centralized, offering more convenient maintenance. The front-flip hood can be opened at a large angle, ensuring easy access to the maintenance points and minimizing downtime.

## SAFETY

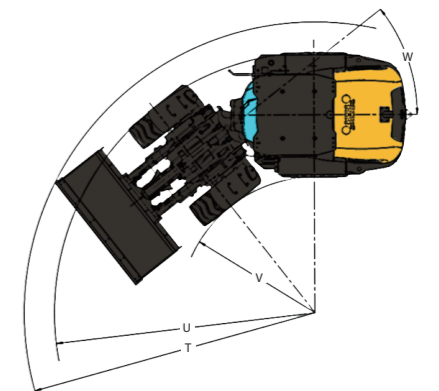
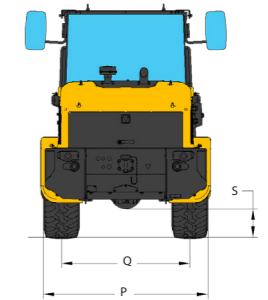
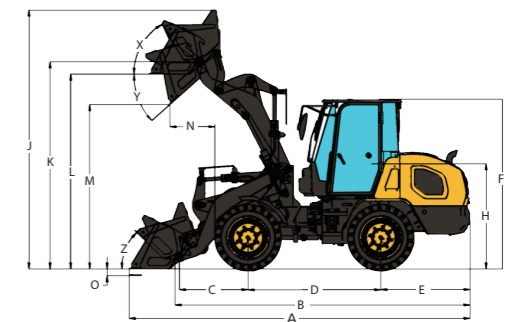
The ROPS & FOPS cab is robust and durable, equipped with emergency stop button and hydraulic lock to protect your safety. The ergonomically designed cab features easily accessible controls, reducing work intensity and improving your overall experience.



# Technical Specifications

Item contents	Parameters
<b>Overall Parameter</b>	
Operating Weight	6000 kg
Bucket Capacity	1.0 m <sup>3</sup>
Travel Speed	Range I 9 km/h Range II 20 km/h
<b>Engine</b>	
Manufacture	Yanmar
Model	4TNV98CT-NTY
Rated Power	53.3 kW
Rated Speed	2500 rpm
Displacement	3.319 L
Bore	98 mm
Stroke	110 mm
<b>Electrical System</b>	
Voltage	12 V
Battery Capacity	120 Ah
Engine Rated Power	12 V/80 A
Engine Output Power	3 kW
<b>Main Performances</b>	
Max. Digging Force (Bucket)	58 kN
Max. Tractive Force	52 kN
Lifting Capacity at Max. Lifting Height	3000 Kg
Bucket Tipping Loads (Straight)	4582 kg
Bucket Tipping Loads (Fully Articulated)	3850 kg
Drive Type	Hydrostatic
Differential Locks	Optional, both axles
Boom Lifting Time	5 s
Lowering Time	4.5 s
Dumping Time	1.5 s
Max. Steering Angle	± 38°
Max. Oscillating Angle	± 9°
<b>Hydraulic System</b>	
Working Hydraulic System Flow	92.5 L/min
Working Hydraulic System Pressure	24 MPa
Driving Hydraulic System Flow	187.5 L/min
Driving Hydraulic System Pressure	40.5 MPa
Steering Hydraulic System Flow	92.5 L/min
Steering Hydraulic System Pressure	19 MPa
Lifting Cylinders	2
Tilting Cylinders	1
Steering Cylinders	1
<b>Maintenance</b>	
Fuel Tank	80 L
Engine Oil	5.5 L
Engine Coolant	15 L
Hydraulic Tank	47 L
Hydraulic System (including tank)	120 L
Axle Oil	13 L
Transmission	2 L
<b>Sound Level</b>	
Sound Pressure Level	78 dB (A)
Exterior Sound Power Level (ISO 6393:2008)	101 dB (A)

Dimension and Specification	Parameters
A Overall length	5520 mm
B Overall length (without bucket)	4773 mm
C Center of axle to bucket pivot point	1108 mm
D Wheelbase	2150 mm
E Rear overhang length	1445 mm
F Overall height	2745 mm
H Seat height	1660 mm
J Total working height	4193 mm
K Height to hinge pin, fully raised	3354 mm
L Bucket leveling height	3155 mm
M Dumping height	2660 mm
N Dumping reach	723 mm
O Digging depth	90 mm
P Overall width	2060 mm
Q Track width	1550 mm
S Ground clearance	370 mm
T Turning radius: over bucket	4602 mm
U Turning radius: outside of tyre	4123 mm
V Turning radius: inside of tyre	2163 mm
W Steering angle	38°
X Rollback angle, fully raised	58°
Y Dumping angle for max. lifting	42°
Z Rollback angle, ground	43.7°



The technology of XCMG wheel loaders is subject to constant improvement and upgrading. In case the specifications or detailed appearance contained in this brochure differ from actual products, the latter shall prevail. XCMG reserves the right of final interpretation for the above. Our products may be modified without prior notice to users.