

# XC968 Pro

WHEEL LOADER

Rated Power 194kW at 2,200 rpm  
Operating weight 21800kg  
Rated load 6000kg  
Bucket capacity 3.8m<sup>3</sup>

[www.xcmg.com](http://www.xcmg.com)

**XCMG Regional Departments:**

Europe	(+86-516) 87739703 87739218 87739537	Africa	(+86-516) 87735009 87739222 87739283
West Asia & North Africa	(+86-516) 87739702 87739202 87739223	Central Asia	(+86-516) 87739236 87739239 87739538
Asia-Pacific	(+86-516) 87739128 87739500 87739529	America	(+86-516) 87739285 87739551 87739710

**XUZHOU CONSTRUCTION MACHINERY GROUP IMP. & EXP. CO., LTD**

**Add:** No.1, Tuolanshan Road, Xuzhou Economic Developing Zone, Jiangsu, China 221004

**Fax:** +86 (0) 516 8773 9228

**E-mail:** [export@xcmg.com](mailto:export@xcmg.com)

**XCMG MINING EQUIPMENT AUSTRALIA PTY LTD**

**Add:** 31 – 33 Westpool Drive, Hallam, VIC 3803

**E-mail:** [enquiries@xcmg.net.au](mailto:enquiries@xcmg.net.au)

**Phone:** 1800 565 988 +61 3 9796 3075

\*Standard and optional equipment may vary. Contact your XCMG dealer for more information. The machine may vary according to International standards.  
\* The photos may include attachments and optional equipment that are not available in your area.  
\* Materials and specifications are subject to change without advance notice.  
\* All imperial measurements rounded off to the nearest pound or inch.

[www.xcmg.net.au](http://www.xcmg.net.au)



## PRODUCT HIGHLIGHTS

XC968 pro

### EXCELLENT PRODUCTIVITY AND FUEL EFFICIENCY

- Pilot lock
- Electro-hydraulic proportional full-variable hydraulic control
- Tier-III Engine

### HIGH RELIABILITY AND DURABILITY

- Reinforced wet axle
- Optimized three-section drive shaft
- High quality hydraulic hose



### EASY CONTROL AND COMFORTABLE OPERATION

- Electric control joystick
- Fully adjustable air suspension seat and armrest
- Stabilizer module (Standard)
- Automatic lubrication system (Standard)
- New-type air conditioning system
- Full sound-proofed spacious ROPS/FOPS cab
- Liquid Crystal Display
- Weighing system
- Steering limit
- Independent cooling system (Standard)

### THE ULTIMATE SAFE ENVIRONMENT

- Emergency stop
- Radar (Optional)
- ROPS and FOPS cab

### SERVICEABILITY AND TELEMATICS

- ECD (Engine connection diagnostics)
- Fully openable engine hood
- Easy-to-change filters
- Wide core & fin radiator

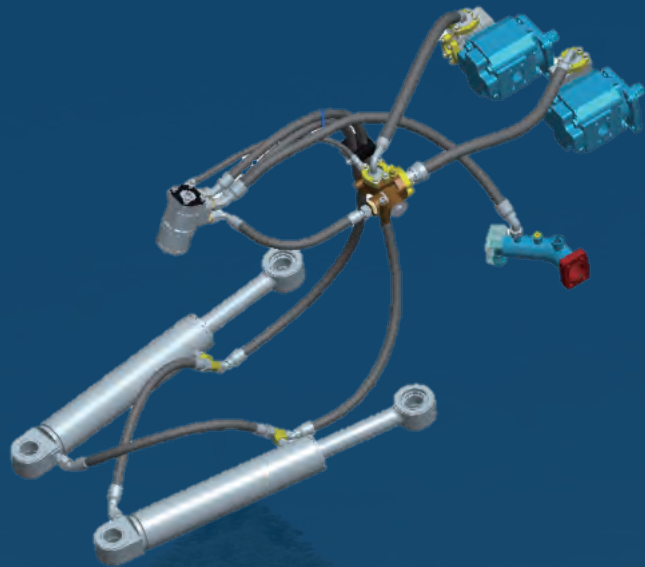
# EXCELLENT PRO- DUCTIVITY AND FUEL EFFICIENCY

## Pilot lock

No movement of the joystick after closure for safe servicing

## Electro-hydraulic proportional full-variable hydraulic control

The adoption of an electro-hydraulic proportional full-variable hydraulic system enables flow rate adjustment according to the load, reducing energy losses and improving operational efficiency.



## Tier-III Engine

DONGFENG CUMMINS QSC8.3 EU Stage III engine with air-to-air inter-cooling and electronically controlled high-pressure common rail is adopted; the rated power is 194kW, which meets the demand of heavy-duty use.



# HIGH RELIABILITY AND DURABILITY



## Reinforced wet drive axle

XCMG designed reinforced wet drive axles are adopted to reinforce the axle shell structure and material for high strength and good ductility; a circulation system with a forced internal lubrication structure is adopted to ensure sufficient lubrication of the drive axle while also providing cooling and excellent heat dissipation.



## Optimized three-section drive shaft

Three-section drive shaft is adopted to distribute the force on the drive shaft when steering; the key block structure is adopted at the connection of the drive shaft, which has a good anti-loosening effect and makes the torque transmission more stable and reliable.



## High quality hydraulic hose

The inner layer of the hydraulic hose is made of oil-resistant synthetic rubber, and the outer layer is made of abrasion-resistant and anti-aging synthetic rubber. This allows the hose to withstand harsh working conditions and pressure.



## EASY CONTROL AND COMFORTABLE OPERATION



### Electric control joystick

Electric control joystick with integrated FNR (Forward-Neutral-Reverse) buttons for convenient gear shifting.



### Fully adjustable air suspension seat and armrest

High-performance air suspension seat shock-absorbing seats are used, which can be adjusted for both front and rear positions as well as softness and hardness. The seat back angle is adjustable, and the armrest box and seat can be adjusted together while also independently adjusting the handle position, meeting the needs of different operators.



### Stabilizer module (Standard)

Stabilizer module is installed to effectively absorb the impact of the working device cylinders during transportation, thereby improving the overall stability of the machine.

### Automatic lubrication system (Standard)

Centralized lubrication system that allows adjustable lubrication intervals is adopted; a combination of automatic and manual lubrication methods is adopted to enhance the reliability of the lubrication system.



### New-type air conditioning system

Dual-purpose air conditioning system with both cooling and heating functions, featuring all-round air outlets for comfortable temperature control.

# EASY CONTROL AND COMFORTABLE OPERATION



## Full sound-proofed spacious ROPS/FOPS cab

The new design of the cab features an attractive appearance, spacious interior operating space, and a wide field of vision. The framework is constructed using rectangular profiled tubes and floor integrated welding techniques, conforming to ROPS/FOPS standards. The cab is equipped with micro-pressurization technology, effectively isolating external dust.



## Weighing system

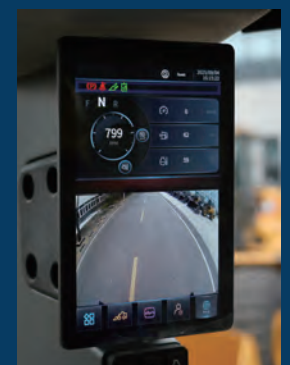
Optional weighing system, multiple accounts and products can be set to facilitate the adaptation of different working conditions

## Steering limit

The steering system is equipped with hydraulic soft-limit function, which reduces the rigid impact when steering and makes the steering smooth and comfortable.

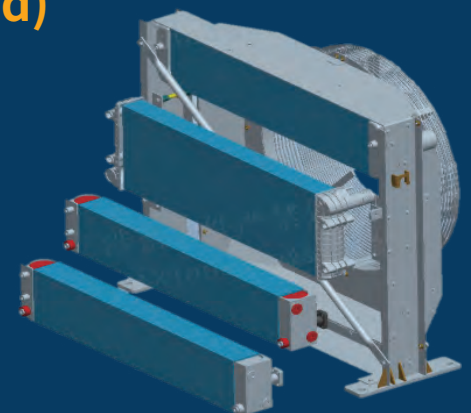
## Liquid Crystal Display

The system is equipped with a 10-inch LCD display that connects to the controllers of the engine, transmission, etc. via the CAN bus, enabling real-time display of the machine's operational status and featuring a fault alarm function.



## Independent cooling system (Standard)

Intelligent independent cooling system is adopted, the fan speed is automatically adjusted according to the engine water temperature, intake air temperature, torque converter oil temperature, etc., realizing the intelligent matching between the fan speed and the cooling demand of the system, and with the reverse self-cleaning function.



# THE ULTIMATE SAFE ENVIRONMENT

## Emergency stop

The machine is equipped with emergency stop buttons both inside and outside the cab to facilitate engine shutdown in emergencies and enhance safety.



## ROPS and FOPS cab

The cab, certified with ROPS and FOPS, is sturdy and durable, capable of withstanding severe impacts, ensuring your safety and peace of mind during operations.



## Radar (Optional)





## SERVICEABILITY AND TELEMATICS

### ECD (Engine connection diagnostics)

There is an engine diagnostic interface inside the cab, which can diagnose engine faults after connecting to a computer.

### Fully openable engine hood

The large-angle rear tilting hood allows easy access to the engine, radiator, and other components as they are exposed when the hood is opened. This design facilitates convenient and quick maintenance and servicing.



### Easy-to-change filters

The rear tilting hood design allows easy access to the engine and transmission filter, facilitating convenient maintenance and replacement.

### Wide core & fin radiator

The radiator is designed with a plate-fin structure and an enlarged radiator core, providing a large heat dissipation area. Each core is constructed in a modular design, allowing for easy replacement when needed.



# Technical Specifications

Model	Parameter
Operating weight	21800 (1±2%) kg
Rated load	6000kg
Bucket capacity	3.8m <sup>3</sup>
Bucket breakout force	≥200kN
Tipping load (full-steering)	Straight ≥ 15000
	Full ≥ 13000

Engine	Parameter
Manufacturer/Model	CUMMINS / QSC8.3-C260-30
Type	Inline 6-cylinder, air-to-air intercooled, and electronically controlled common rail
Rated power	194kW at 2,200 rpm
Max power	214kW at 1800 rpm
Peak torque	1135 N · m at 1350 rpm
Displacement	8.3L

TRANSMISSION		
4-speed transmission	Model	4BP230
	Category	Fully-automatic electric control box
Travel speed	Gear	Speed (km/h)
	1st (F/R)	6.5/6.5
Travel speed	2nd (F/R)	12.5/13
	3rd (F/R)	22/23
	4th (F/-)	36
Brake distance		≤11m

AXLES	
Drive system	Four-wheel drive
Front axle	Fixed
Rear axle	Oscillation angle 11°
Hub speed reducer	Wheel-side planetary speed reducer
Differential	Front axle limited slip differential
Reduction ratio	24.685

Brake system	
Service Brakes	Four-wheel full hydraulic wet brake system is adopted, featuring excellent heat dissipation performance and reliable braking safety.
Parking brake	Hydraulic control, spring-applied braking system.
Emergency brake	The cab is equipped with an emergency stop button on the inside and outside of the cab, which facilitates the engine shutdown in case of emergency and improves safety.

Cab	
Cab	ROPS / FOPS meet ISO 3471 and ISO 3449

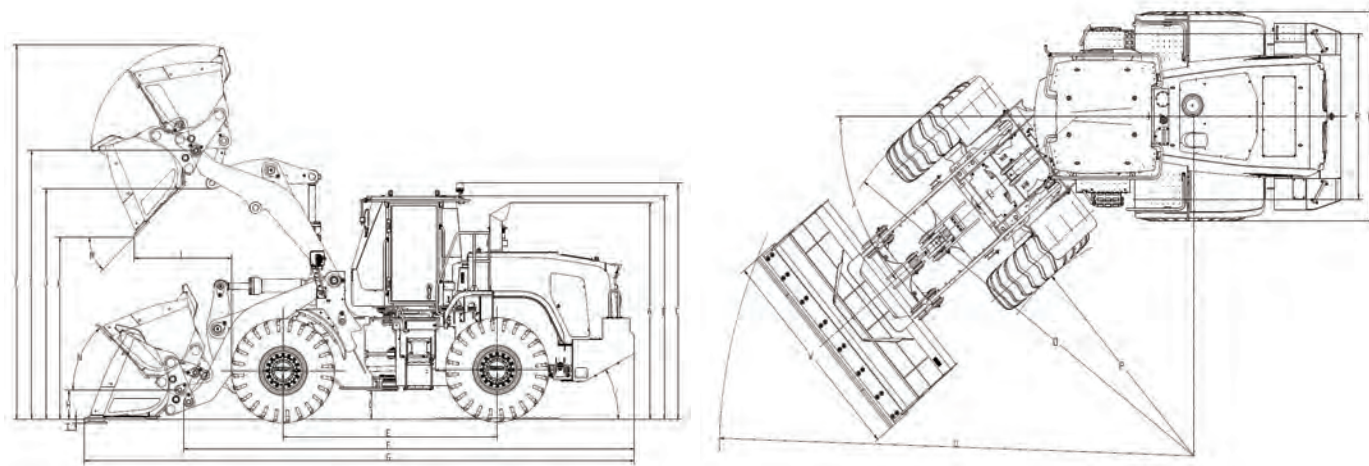
Hydraulic system	
Type	Full-variable hydraulic system
Pump	Variable displacement piston pump
Rated oil quantity	438L /min
Control valve	3 Multi-way valve
System pressure	230bar
Lift circuit	Lifting circuit for lifting, holding, lowering and floating of the arm
Tilt circuit	Tipping cylinder circuit for collecting, holding and tipping the bucket
Hydraulic Cylinder	Type' double acting
	Lift - 2-180 x 775mm
	Tilt - 1-200 x 535mm
Hydraulic cycle time with rated load	Dump, at maximum raise: ≤ 1.5 Sec.
	Total: ≤12 Sec.

Steering system	
Type	Variable -displacement pump
Pump	209L /min
Rated displacement	195 bar
System pressure	Double acting
Cylinder	40° to both right and left angle, respectively
Steering angle	"Center-point frame articulation.
Features	Tilt and telescopic steering column"

Service refill capacities	
Fuel tank	300L
Cooling system	45L
Engine oil	22L
Transmission	45L
Front axle	55L
Rear axle	50L
Hydraulic reservoir	120L
Hydraulic system (Including tank)	200L

Sound	
The guaranteed noise levels described below may vary depending on a range of factors such as operating conditions, cooling fan speed, engine type, etc.. Hearing protection is required if the operator works in an improperly maintained cab or is exposed to noisy environments with the doors and/or windows open.	
Exterior sound power level at cooling fan max. speed	114dB
Operator sound pressure level (ISO 6396:2008)	80dB
Exterior sound power level (ISO 6395:2008)	108dB

# Technical Specifications



## DIMENSIONS & SPECIFICATIONS

Label	Description	Unit	Value
A	Height - top of exhaust pipe	mm	3340 (1±1%)
B	Height - top of cab	mm	3530 (1±1%)
C	Height - top of warning light	mm	3735 (1±1%)
D	Ground clearance	mm	425 (1±1%)
E	Wheel base	mm	3450 (1±1%)
F	Overall length (without bucket)	mm	7155 (1±1%)
G	Transportation length (bucket flat on the ground)	mm	8790 (1±1%)
H	Pivot height with flat bucket	mm	495 (1±1%)
I	Pivot height at maximum lifting	mm	4295 (1±1%)
J	Lift arm clearance at maximum lifting	mm	3715 (1±1%)
K	Dumping clearance for maximum lifting and 45° dumping	mm	2925 (1±1%)
L	Dumping reach for maximum lifting and 45° dumping	mm	1460 (1±1%)
M	Dumping angle for maximum lifting and dumping (on stopper)	°	45±1
N	Rollback angle	Ground	° 43±1
		Carry	° 48±1
O	Radius of the outside of tyre	mm	6150 (1±1%)
P	Radius of the inside of tyre	mm	3365 (1±1%)
Q	Width (outside of tyres)	mm	2850 (1±1%)
R	Wheel track	mm	2255 (1±1%)
S	Digging depth	mm	124 (1±1%)
T	Maximum lift height	mm	6000 (1±1%)
U	Turning radius (outside of bucket)	mm	7000 (1±1%)
V	Gradeability	°	28±1
W	Bucket width	mm	2996 (1±1%)
X	Steering angle	°	40±1

ENGINE	Standard	Optional
UMMINS / QSB6.7-C130-30	●	
Transmission F4/R3, computer-controlled, electronic soft-shift, auto-shift and manual shift function	●	
Torque converter	●	
Transmission oil level inspection	●	
Transmission oil cooler	●	
Limited slip differential	●	
Conventional Type	●	
Service brake (Enclosed wet-disc)	●	
Parking brake	●	
23.5R25, L3, ★★	●	
	●	
	●	

Hydraulic system	Standard	Optional
Bucket lift limit	●	
Automatic bucket leveling	●	
Diagnostic pressure fittings	●	
Hydraulic oil cooler	●	
Hydraulic oil level gauge	●	
Stabilizer module system	●	
Extra piping for additional functions	●	
Automatic lubrication system	●	

Safety	Standard	Optional
Emergency stop	●	
Emergency steering	●	
Rear view camera	●	
Fire extinguisher		●
Boom safety bar	●	
Radar + Auxiliary display		●
ECD (Engine connection diagnostics)	●	
Intake preheating	●	
Fuel tank cap lock	●	
Electric horn	●	
Tool kit	●	
3.5m³ quick blade bucket	●	

ERGONOMICALLY AND SLIP RESISTANT PLATFORM, LEFT & RIGHT	Standard	Optional
Handrails / Ladders / Platforms / Steps	●	
Fenders (Front/Rear)	●	
Under Guard (E/G, T/M)		●
Mudguard		●
ECD (Engine connection diagnostics)	●	

CAB & INTERIOR	Standard	Optional
Door and cab lock, one key	●	
Air conditioner & heater	●	
Wiper and washer, front and rear (Constant speed)	●	
3" Retractable seat belt & adjustable air suspension (heated)		●
Console box	●	
Cup holder	●	
One brake pedal	●	
Dual-brake pedal		●

CAB & INTERIOR	Standard	Optional
Air filter clogging (Mechanical standard, electronic optional)		●
Battery voltage	●	
Engine oil pressure	●	
Fuel level	●	
Engine coolant temperature	●	
Emergency warning lamp	●	
Transmission error codes	●	
Transmission oil temperature	●	
Engine coolant temperature	●	
Fuel level	●	
Engine tachometer	●	
Engine oil pressure gauge	●	
Battery voltmeter	●	
Transmission oil temperature	●	
Parking brake	●	
High beam		●
Turn signal light	●	
Stabilizer module	●	
LCD DISPLAY	●	
Parking brake	●	
FWD/REV	●	
Fuel tank indicator (Fuel tank level display)	●	
Hour meter	●	
2 Headlights	●	
1 LED dome light	●	
2 Rear combination lights (Reverse, turn signal, position, and brake lights)	●	
2 Front roof working lights (LED)	●	
2 Rear roof working lights (LED)	●	
2 Working lights on rear hood	●	
Keys	●	
Parking	●	
Battery master switch	●	
FNR gear	●	
Power cut-off	●	
Emergency steering	●	
Main light	●	
Working light	●	
Weighing system		●
Mirror heating		●
Rear wiper	●	
Stabilizer module	●	
Camera	●	
ROPS/FOPS Cab	●	
Coat hook	●	
Rear view mirrors (1 inside/2 outside, heated)		●
Steering wheel, tiltable and telescopic	●	
Roller sunshade (Rear window)		●
Tinted safety glass	●	
Magazine pouch	●	
Radio/USB player	●	
Wrist supports and armrests	●	
24 V to 12 V DC converter		●

OTHER	Standard	Optional
Counterweight	●	
Counterweight - Heavy-duty		●
Traction bar with pin		●