



XC978

WHEEL LOADER

Rated Power 216kW at 2,200 rpm
 Bucket 4.5m³
 Operating Weight 24500kg
 Rated Load 7800kg



www.xcmg.com

XCMG Regional Departments:

Europe	(+86-516) 87739703 87739218 87739537	Africa	(+86-516) 87735009 87739222 87739283
West Asia & North Africa	(+86-516) 87739702 87739202 87739223	Central Asia	(+86-516) 87739236 87739239 87739538
Asia-Pacific	(+86-516) 87739128 87739500 87739529	America	(+86-516) 87739285 87739551 87739710

XUZHOU CONSTRUCTION MACHINERY GROUP IMP. & EXP. CO., LTD
 Add: No.1, Tuolanshan Road, Xuzhou Economic Developing Zone, Jiangsu, China 221004
 Fax: +86 (0) 516 8773 9228
 E-mail: export@xcmg.com

XCMG MINING EQUIPMENT AUSTRALIA PTY LTD
 Add: 31 – 33 Westpool Drive, Hallam, VIC 3803
 Phone: 1800 565 988 +61 3 9796 3075
 E-mail: enquiries@xcmg.net.au

*Standard and optional equipment may vary. Contact your XCMG dealer for more information. The machine may vary according to International standards.
 * The photos may include attachments and optional equipment that are not available in your area.
 * Materials and specifications are subject to change without advance notice.
 * All imperial measurements rounded off to the nearest pound or inch.

www.xcmg.net.au

PRODUCT HIGHLIGHTS

XC978

EXCELLENT PRODUCTIVITY AND FUEL EFFICIENCY

- Pilot lock
- Fixed variable hydraulic control
- Tier-III Engine

HIGH RELIABILITY AND DURABILITY

- Reinforced wet axle
- Optimized three-section drive shaft
- High quality hydraulic hose

EASY CONTROL AND COMFORTABLE OPERATION

- FNR pilot joystick
- Fully adjustable air suspension seat and armrest
- Stabilizer module (Standard)
- Automatic lubrication system (Standard)
- New-type air conditioning system
- Full sound-proofed spacious ROPS/FOPS cab
- Combined dashboard
- Weighing system
- Steering limit

THE ULTIMATE SAFE ENVIRONMENT

- Emergency stop
- Radar (Optional)
- AVM (Around View Monitoring) (Optional)

SERVICEABILITY AND TELEMATICS

- ECD (Engine connection diagnostics)
- Fully openable engine hood
- Easy-to-change filters
- Wide core & fin radiator



EXCELLENT PRODUCTIVITY AND FUEL EFFICIENCY

Pilot lock

No movement of the joystick after closure for safe servicing

Fixed variable hydraulic control

The fixed-variable dual-pump confluence hydraulic system enables light steering; ensuring smooth and safe transportation.



Tier-III Engine

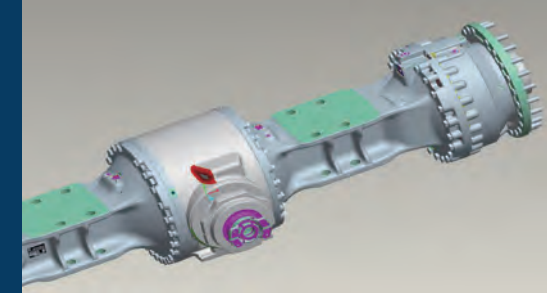
It adopts Original imported CUMMINS QSM11 China III engine with EFI and turbocharged power; the rated power is 216kW, which meets the demand of heavy-duty use.



HIGH RELIABILITY AND DURABILITY

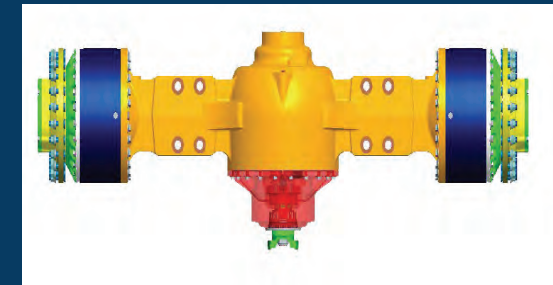
Reinforced wet axle

XCMG series wet axles increase the anti-blocking breather at both ends to improve the reliability and adaptability to the working conditions; equipped with oil cooling and heat dissipation system, the wet brake friction pads can be forcibly cooled to effectively extend the service life of the axle.



Optimized three-section drive shaft

Three-section drive shaft is adopted to distribute the force on the drive shaft when steering; the key block structure is adopted at the connection of the drive shaft, which has a good anti-loosening effect and makes the torque transmission more stable and reliable.



High quality hydraulic hose

The inner layer of the hydraulic hose is made of oil-resistant synthetic rubber, and the outer layer is made of abrasion-resistant and anti-aging synthetic rubber. This allows the hose to withstand harsh working conditions and pressure.



EASY CONTROL AND COMFORTABLE OPERATION

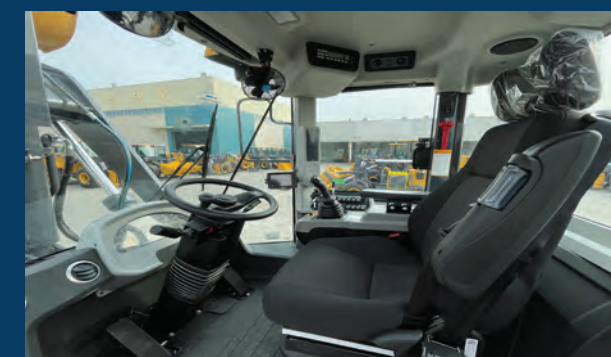


FNR pilot joystick



Fully adjustable air suspension seat and armrest

High-performance air-suspended shock-absorbing seats are adopted, along with an adjustable armrest box, providing adjustable height and front-to-back positioning, meeting the needs of different operators.



Stabilizer module (Standard)

Stabilizer module is installed to effectively absorb the impact of the working device cylinders during transportation, thereby improving the overall stability of the machine.



Automatic lubrication system (Standard)

Centralized lubrication system of international brand that allows adjustable lubrication intervals is adopted; a combination of automatic and manual lubrication methods is adopted to enhance the reliability of the lubrication system.



EASY CONTROL AND COMFORTABLE OPERATION



New-type air conditioning system

Dual-purpose air conditioning system with both cooling and heating functions, featuring all-round air outlets for comfortable temperature control. Equipped with an electric water valve for.

Full sound-proofed spacious ROPS/FOPS cab

The new design of the cab features an attractive appearance, spacious interior operating space, and a wide field of vision. The framework is constructed using rectangular profiled tubes and floor integrated welding techniques, conforming to ROPS/FOPS standards. The cab is equipped with micro-pressurization technology, effectively isolating external dust.

Combined dashboard

Combination dashboard connected to the controllers of the engine, transmission, etc. through a CAN bus is adopted. It provides real-time display of the machine's operating status and has a fault alarm function.



Weighing system

Optional weighing system, multiple accounts and products can be set to facilitate the adaptation of different working conditions



Steering limit

The steering system is equipped with hydraulic soft-limit function, which reduces the rigid impact when steering and makes the steering smooth and comfortable.



THE ULTIMATE SAFE ENVIRONMENT

Radar (Optional)

Optional

AVM (Around View Monitoring) (Optional)

Optional



Emergency stop

The cab is equipped with an emergency stop button on the inside and outside of the cab, which facilitates the engine shutdown in case of emergency and improves safety.



SERVICEABILITY AND TELEMATICS

ECD (Engine connection diagnostics)

There is an engine diagnostic interface inside the cab, which can diagnose engine faults after connecting to a computer.

Fully openable engine hood

The large-angle rear tilting hood allows easy access to the engine, radiator, and other components as they are exposed when the hood is opened. This design facilitates convenient and quick maintenance and servicing.



Easy-to-change filters

The rear tilting hood design allows easy access to the engine and transmission filter, facilitating convenient maintenance and replacement.



Wide core & fin radiator

The radiator is designed with a plate-fin structure and an enlarged radiator core, providing a large heat dissipation area. Each core is constructed in a modular design, allowing for easy replacement when needed.



Technical Specifications

Model	Parameter
Operating weight	24500kg
Rated load	7800kg
Bucket capacity	4.5m ³
Bucket breakout force	215kN
Tipping load (full-steering)	Straight ≥ 18220
	Full ≥ 15600

Engine	Parameter
Manufacturer/Model	CUMMINS QSM11-290/X12
Type	Inline 6-cylinder, air-to-air intercooled, and electronically controlled common rail
Rated power	216kW at 2,100 rpm
Max power	239kW at 1,800 rpm
Peak torque	1478 N · m at 1400 rpm
Displacement	10.8L

TRANSMISSION	Unit	Parameter
4-speed transmission	Model	4WG260
	Type	Fully-automatic electric control box
Travel speed	Gear	Speed (km/h)
Forward	1st	7.2
	2nd	13.3
	3rd	28
	4th	42
Reverse	1st	7.2
	2nd	13.3
	3rd	28
Brake distance		≤ 11m

AXLES	Parameter
Drive system	Four-wheel drive system
Front axle	Fixed
Rear axle	Oscillating ±12 degrees
Hub speed reducer	Planetary reduction at wheel end
Differential	Front axle limited slip differential
Reduction ratio	23.334

CAB
ROPS / FOPS meet ISO 3471 and ISO 3449

SERVICE REFILL CAPACITIES	Parameter
Fuel tank	400L
Cooling system	62L
Engine oil	34L
Transmission	50L
Front axle	48L
Rear axle	48L
Hydraulic reservoir	160L
Hydraulic system(Including tank)	255L

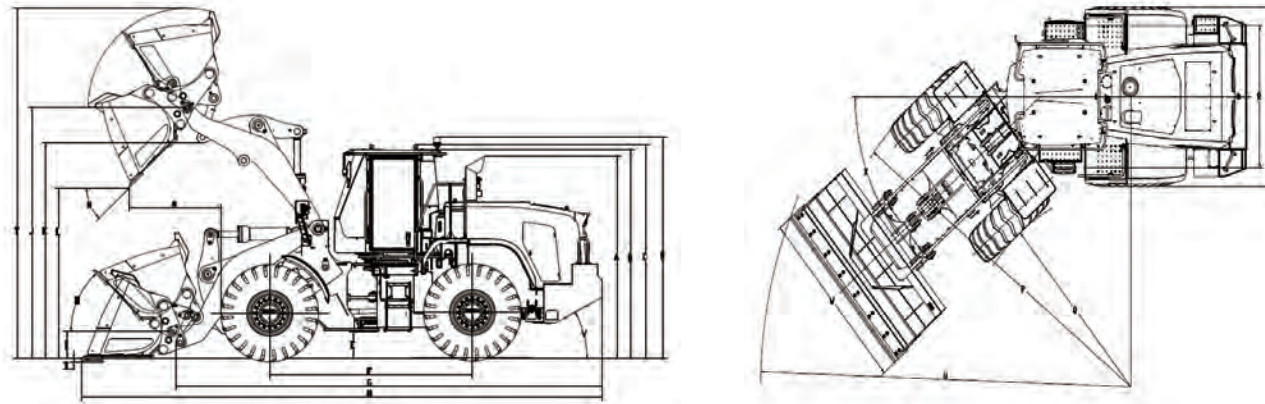
BRAKE	Parameter
Service Brakes	Four-wheel full hydraulic wet brake system is adopted, featuring excellent heat dissipation performance and reliable braking safety.
Parking brake	Hydraulic control, spring-applied braking system.
Emergency brake	The cab is equipped with an emergency stop button on the inside and outside of the cab, which facilitates the engine shutdown in case of emergency and improves safety.

HYDRAULIC SYSTEM	Parameter
Type	Fixed variable hydraulic system
Pump	Gear pump + variable displacement piston pump
Rated oil quantity	160 L
Control valve	3 Multi-way valve
System pressure	240bar
Lift circuit	Lifting circuit for lifting, holding, lowering and floating of the arm
Tilt circuit	Tipping cylinder circuit for collecting, holding and tipping the bucket
Hydraulic oil	Type' double acting
	Lift - 2-180 x 840mm
	Tilt - 1-200 x 543mm
	Dump, at maximum raise: 1.2 Sec. Total: 10.7 Sec.

STEERING SYSTEM	Parameter
Type	Flow amplified load-sensitive steering system
Pump	Variable -displacement pump
Rated oil quantity	(110+110) L/min
System pressure	210 bar
Cylinder	Double acting
Steering angle	40° to both right and left angle, respectively
Features	Center-point frame articulation. Tilt and telescopic steering column

SOUND	Parameter
The guaranteed noise levels described below may vary depending on a range of factors such as operating conditions, cooling fan speed, engine type, etc. Hearing protection is required if the operator works in an improperly maintained cab or is exposed to noisy environments with the doors and/or windows open.	
Exterior sound power level at cooling fan max. speed	110dB
Operator sound pressure level (ISO 6396:2008)	74dB
Exterior sound power level (ISO 6395:2008)	110dB

Technical Specifications



DIMENSIONS & SPECIFICATIONS				
A	Height - top of exhaust pipe	mm	3530	
B	Height - top of cab	mm	3620	
C	Height - cab roof lug	mm	3684	
D	Height - top of warning light	mm	3810	
E	Ground clearance	mm	488	
F	Wheel base	mm	3550	
G	Overall length (without bucket)	mm	7550	
H	Transportation length (bucket flat on the ground)	mm	9015	
I	Pivot height at transport position	mm	500	
J	Pivot height at maximum lifting	mm	4395	
K	Lift arm clearance at maximum lifting	mm	4082	
L	Dumping height for maximum lifting and 45° dumping	mm	3510	
M	Dumping reach for maximum lifting and 45° dumping	mm	1085	
N	Dumping angle for maximum lifting and dumping (on stopper)	Degree	45	
O	Rollback angle	Ground	Degree	43
		Carry	Degree	48
P	Radius of the outside of tyre	mm	6374.5	
Q	Radius of the inside of tyre	mm	3379.5	
	Turning radius (Center of outside tyre)	mm	6037	
R	Wheel track	mm	2320	
S	Overall width	mm	2995	
T	Digging depth	mm	90	
U	Turning radius (outside of bucket)	mm	7220	
V	Gradeability	Degree	27	
W	Bucket width	mm	3230	
X	Steering angle	Degree	40	

Engine	STD	OPT
CUMMINS QSM11-290/X12	•	
POWER TRAIN	STD	OPT
Transmission F4/R3, electronically controlled , electronic soft-shift, auto-shift and pedal shift	•	
Torque converter	•	
Flameout delayer	•	
Transmission oil cooler	•	
Front axle		
hydraulic differential	•	
Rear axle		
Conventional Type	•	
BRAKE		
Service brake (Enclosed wet-disc)	•	
Parking brake	•	
TYRES		
26.5R25, L3	•	
Hydraulic system	STD	OPT
Bucket lift limit	•	
Automatic bucket leveling	•	
Diagnostic pressure fittings	•	
Hydraulic oil cooler	•	
Hydraulic oil level gauge	•	
Stabilizer module	•	
Third hydraulic system	•	
Automatic lubrication system	•	
Safety	STD	OPT
Emergency stop	•	
Emergency steering	•	
Rear view camera	•	
Fire extinguisher	•	
Boom safety bar	•	
OBJECT DETECTION		
Radar + Auxiliary display		•
TELEMATICS		
ECD (Engine connection diagnostics)	•	
OTHER	STD	OPT
Intake preheating	•	
Fuel tank cap lock	•	
Electric horn	•	
Tool kit	•	
Bucket		
4.5m³ blade bucket	•	
4.2m³ quick blade bucket		•
7.0m³ quick blade bucket		•

Cab & interior	STD	OPT
SWITCHES		
Engine hood open	•	
Parking	•	
Battery master switch	•	
FNR gear	•	
Engine oil pressure	•	
Emergency steering	•	
Main light	•	
Working light	•	•
Weighing system		•
Mirror heating		
Rear wiper	•	
Stabilizer module	•	
Beacon light		
Camera	•	
CAB (SOUND SUPPRESSION)		
ROPS/FOPS Cab	•	
Coat hook	•	
Rear view mirrors (1 inside /2 outside, heated)		•
Steering wheel, tiltable and telescopic	•	
Roller sunshade (Rear window)		•
Tinted safety glass	•	
Magazine pouch	•	
Radio/USB player	•	
Wrist supports and armrests	•	
24 V to 12 V DC converter (20 A)	•	
DOOR		
Door and cab lock, one key	•	

Cab & interior	STD	OPT
ALARMS, AUDIBLE AND VISUAL		
Air filter clogging		•
Battery voltage	•	
Brake oil pressure	•	
Fuel level	•	
Engine coolant temperature	•	
Emergency warning lamp	•	
Transmission error codes	•	
Transmission oil temperature	•	
BATTERIES		
120Ah, 12V	•	
GAUGES		
Engine coolant temperature	•	
Fuel level	•	
Speedometer	•	
Engine tachometer	•	
Engine oil pressure gauge	•	
Battery voltmeter	•	
Indicator		
Parking brake	•	
High beam	•	
Turn signal light	•	
Stabilizer module	•	
LCD DISPLAY (GAUGE)		
Parking brake	•	
FWD/REV	•	
LCD DISPLAY (MONITOR)		
Engine rpm	•	
Fault and maintenance warning	•	
Hour meter	•	
Horn, electric	•	
LIGHTING SYSTEM		
2 Headlights	•	
1 LED dome light	•	
Rear combination lights (2 each of reverse, turn signal, position, and brake lights)	•	
2 Front roof working lights (LED)	•	
2 Rear roof working lights (LED)	•	
2 Working lights on rear hood	•	
IGNITION		
Keys	•	

Automatic air conditioning control	STD	OPT
Air conditioner & heater		•
Wiper and washer, front and rear (Constant speed)		
SEAT		
3-point retractable seat belt & adjustable air suspension(heated)		•
PERSONAL STORAGE SPACE		
Cup holder	•	
PEDALS		
One brake pedal		•
Dual-brake pedal	•	
OTHER	STD	OPT
Counterweight		
Counterweight	•	
Counterweight - Heavy-duty		•
Traction bar with pin	•	
ERGONOMICALLY AND SLIP RESISTANT PLATFORM, LEFT & RIGHT		
Handrails / Ladders / Platforms / Steps	•	
GUARDS		
Fenders (Front/Rear)	•	
Transmission under guard	•	
Mudguard		•
TELEMATICS		
ECD (Engine connection diagnostics)	•	