



# XC998

## WHEEL LOADER

Operating weight	31500 kg
Rated load	9000 kg
Bucket capacity	5.4 m <sup>3</sup>
Bucket breakout force	260kn



[www.xcmg.com](http://www.xcmg.com)

**XCMG Regional Departments:**

Europe	(+86-516) 87739703 87739218 87739537	Africa	(+86-516) 87735009 87739222 87739283
West Asia & North Africa	(+86-516) 87739702 87739202 87739223	Central Asia	(+86-516) 87739236 87739239 87739538
Asia-Pacific	(+86-516) 87739128 87739500 87739529	America	(+86-516) 87739285 87739551 87739710

**XUZHOU CONSTRUCTION MACHINERY GROUP IMP. & EXP. CO., LTD**

**Add:** No.1, Tuolanshan Road, Xuzhou Economic Developing Zone, Jiangsu, China 221004

**Fax:** +86 (0) 516 8773 9228

**E-mail:** [export@xcmg.com](mailto:export@xcmg.com)

**XCMG MINING EQUIPMENT AUSTRALIA PTY LTD**

**Add:** 31 – 33 Westpool Drive, Hallam, VIC 3803

**E-mail:** [enquiries@xcmg.net.au](mailto:enquiries@xcmg.net.au)

**Phone:** 1800 565 988 +61 3 9796 3075

\*Standard and optional equipment may vary. Contact your XCMG dealer for more information. The machine may vary according to international standards.

\*The photos may include attachments and optional equipment that are not available in your area.

\*Materials and specifications are subject to change without advance notice.

\*All imperial measurements rounded off to the nearest pound or inch.

[www.xcmg.net.au](http://www.xcmg.net.au)

## EXCELLENT PRODUCTIVITY AND FUEL EFFICIENCY

- Full-variable electro-hydraulic proportional control
- High-powered engine
- Reinforced wet axle
- Optimized three-section drive shaft
- Hydraulic hose of an international famous brand

## EASY CONTROL AND COMFORTABLE OPERATION

- Joystick with electro-hydraulic proportional control
- Fully adjustable air suspension seat and armrest
- RIDE Control (Optional)
- Automatic lubrication system
- Air conditioning system
- Full sound-proofed spacious ROPS/FOPS cab
- Combination LCD dashboard
- Steering system
- Brake system

## THE ULTIMATE SAFE ENVIRONMENT

- Reverse camera
- Generator emergency stop (Optional)
- 

## SERVICEABILITY AND TELEMATICS

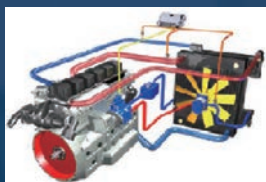
- ECD (Engine connection diagnostics)
- Hood system
- Radiator
- Centralized pressure measurement
- Easy-to-change filters



# EXCELLENT PRODUCTIVITY AND FUEL EFFICIENCY

## Full-variable electro-hydraulic proportional control

"The working hydraulic system adopts load-sensitive variable and electro-hydraulic proportional control technology to provide pressure and flow on demand, reduce additional losses and improve energy utilization; make sure accurate positioning, improve work efficiency, reduce shovel loading and unloading impact, and upgrade the driving comfort.



The excess oil of dual-pump confluence system and steering system flows to the working system in a confluence way, and such reasonable

distribution of oil can facilitate to achieve energy saving, and further improve work efficiency.

## High-powered engine

The EFI turbocharged engine integrates with air-to-air intercooler, and electric start & flameout; the engine features not only higher reliability and adaptability, but also lower fuel consumption and emission; it is



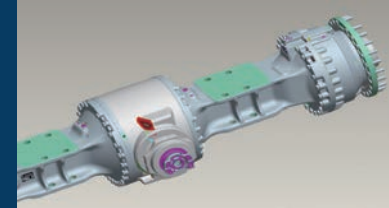
equipped with three-stage air filter and multi-stage fuel filtration system, being suitable for various operating conditions





## Reinforced wet axle

The front and rear drive axles are both wet drive axles with multiple maintenance-free wet brake blocks, extending the service life of the axle; the front axle has a differential locking function, improving the overall trafficability of the machine under harsh working conditions.



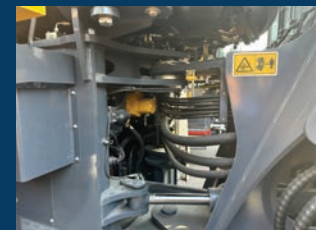
## Optimized three-section drive shaft

Three-section drive shaft is adopted to distribute the force on the drive shaft when steering; the key block structure is adopted at the connection of the drive shaft, which has a good anti-loosening effect and makes the torque transmission more stable and reliable.



## Hydraulic hose of an international famous brand

The inner layer of the hydraulic hose is made of oil-resistant synthetic rubber, and the outer layer is made of abrasion-resistant and anti-aging synthetic rubber. This allows the hose to withstand harsh working conditions and pressure.

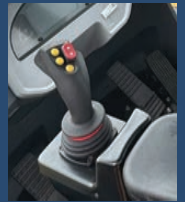


# EASY CONTROL AND COMFORTABLE OPERATION



## Joystick with electro-hydraulic proportional control (Optional)

Be easy and comfortable with the "finger-tip"-operated joystick



## Fully adjustable air suspension seat and armrest

High-performance air-suspended shock-absorbing seats are adopted, along with an adjustable armrest box, providing adjustable height and front-to-back positioning, and meeting the needs of different operators.



## RIDE Control (Optional)

The configured RIDE Control can effectively absorb the impact of the working device cylinder and reduce the material scattering during transportation. At the same time, it also greatly decreases the bumps on the bumpy road, improves the driving comfort and reduces the driving fatigue.



## Automatic lubrication system (Optional)

The centralized lubrication system of a well-known brand is configured to utilize the proper pump pressure to pump the lubricating grease to each lubrication point regularly and quantitatively, so as to maintain a reliable and sufficient oil film between each friction pair and ensure their normal operation of the machine for a long time; besides, the lubrication interval is adjustable.



# EASY CONTROL AND COMFORTABLE OPERATION



## Full sound-proofed spacious ROPS/FOPS cab

XCMG's new FOPS&ROPS micro-pressurized cab ensures good sealability, and effectively isolates external dust from entering; it enjoys large interior space, provides wide vision, and adopts the silicone oil shock absorber connected with the frame, greatly reducing the cab vibration.



## Air conditioning system

It is equipped with the heating & cooling air conditioning, with the air conditioning outlet in "three-dimensional" arrangement, and providing good and fast cooling/heating efficiency! Besides, it is equipped with micro-pressurization technology, effectively preventing dust from entering, and meeting the comfort requirements for operating in dusty environment!



## Combination LCD dashboard

The new generation CAN bus-based digital combination LCD dashboard has functions like engine fault code and transmission fault code query, etc., and the dashboard can monitor and display the state of the complete machine in real time, and has sound and light alarm functions to timely remind the driver to check the fault.



## Steering system

It is equipped with the load-sensing and flow amplification full-variable hydraulic articulated steering, bringing in energy saving and consumption reduction, and equipped with small-displacement steering gear as the pilot to promote flow amplification valve to achieve steering in a fast response way. Besides, the steering force for steering wheel is greatly reduced, making the steering operation easier; the flexible steering limit, which is of first flexible and last rigid, makes no impact during steering, and has a small turning radius, with no vibration, yawing, stiff or light steering phenomenon during driving.



# THE ULTIMATE SAFE ENVIRONMENT



## Reverse camera

The advanced reversing camera provides the driver with a wider rear field of view, guaranteeing the reliability and safety during operation.

## Generator emergency stop (Optional)

The cab is equipped with an emergency stop button on the inside and outside of the cab, which facilitates the engine shutdown in case of emergency and improves safety.



## Brake system

It adopts fully hydraulic dual-circuit wet service braking and caliper disc parking brake, with independent front and rear axle braking and low pressure alarm protection, and combined emergency braking and parking braking to assure your safe operation and driving.



# SERVICEABILITY AND TELEMATICS

There is an engine diagnostic interface reserved inside the cab, which can diagnose engine faults after connected to a computer.

## Hood system

The integrated large-angle rear tilting hood allows easy access to the engine, radiator, and other components as they are exposed when the hood is opened. This design facilitates convenient and quick maintenance and servicing.



## Centralized pressure measurement

The pressure of working, steering, transmission and other systems is extracted, and centralized for layout, being convenient for detection



## Easy-to-change filters

After opening in a centralized way, the filter element is easy for replacement during each daily maintenance



## Quick refueling system(Optional)

With a focus on fuel transfer, the Banlaw system ensures the safe refueling of loaders, no matter how harsh or remote the operating environment. At the same time, the system also helps to prevent oil theft, reduce downtime, and provide customers with a safe, clean, sustainable and environmentally friendly working environment. All systems are built with world-renowned Banlaw refueling, connectors and respirators.



## Radiator

Single-layer large-wave pitch heat dissipation + rotatable air conditioning radiator, being easy to clean



# Technical Specifications

Model	Parameter
Operating weight	31500 kg
Rated load	9000 kg
Bucket capacity	5.4 m <sup>3</sup>
Bucket breakout force	260kn
Tipping load	Straight > 23020 kg
	Full-steering > 19500 kg

Engine	
Manufacturer/Model	Cummins/X12CS3375
Type	Inline six-cylinder, EFI, turbocharged, and high-pressure common rail
Rated power	277kW@2100rpm
Max. power	336kW@1800rpm
Peak torque	1898N.m@(1200 ~ 1600)rpm
Displacement	11.8L

Drive system	
Model	4WG310
Category	Electro-hydraulically controlled fixed-shaft shift transmission
Gear	Forward 4 reverse 3
Travel speed	
1st (F/R)	6.5/6.5
2nd (F/R)	11.5/11.5
3rd (F/R)	24.5/24.5
4th (F/-)	35/-
Brake distance	≤13m

Drive axle	
Actuation system	Four-wheel actuation system
Front axle	Fixed
Rear axle	Oscillation angle 13°
Hub speed reducer	Wheel-side planetary speed reducer
Differential	Front axle differential locking
Speed ratio	27
Brake system	Four-wheel full hydraulic wet brake system is adopted, featuring excellent heat dissipation performance and reliable braking safety.
Service brake	Fully-hydraulic wet brake, being safe and reliable
Parking brake	Electrical control, caliper disc type
Emergency brake	1. There is a parking brake rocker switch in the cab, which can be used as emergency braking as well; 2. The interior and exterior of the cab can be equipped with an emergency stop button (optional), which is easy to operate the engine flameout in an emergency and improve driving safety

<b>Cab</b>	The FOPS & ROPS meet requirements of ISO 3471 and ISO 3449
------------	--

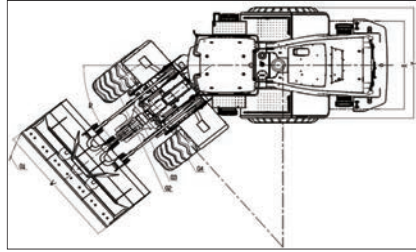
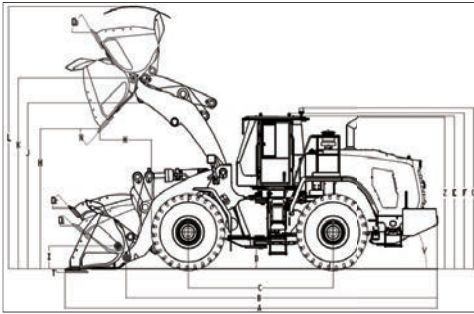
Hydraulic system	
Type	Full-variable hydraulic system
Pump	Piston pump + piston pump
Rated displacement	(130+110) L/min
Control valve	Electrically-controlled two-way multitandem valve
System pressure	26MPa
Lift circuit	Lifting circuit for lifting, holding, lowering and floating of the arm
Tilt circuit	Tipping cylinder circuit for collecting, holding and tipping the bucket
Hydraulic oil	Double drive
	Lift: 2-190 x 885mm
	Tilt: 1-210 x 595mm
Lift duration	≤6.5s
Total cycle time	≤11.5s

Steering system	
Type	Flow amplified load-sensitive steering system; articulated steering
Pump	Piston pump
Rated displacement	110 L/min
System pressure	21MPa
Cylinder	Dual steering cylinder
Steering angle	±40°
Features	Center closed structure

Service refill capacities	
Fuel tank	420L (tank capacity: 460L)
Cooling system	62L
Engine oil	34L
Transmission	64L
Front axle	54L
Rear axle	54L
Hydraulic reservoir	160L (tank capacity: 180L)
Hydraulic system (Including tank)	About 350L

Sound	
The guaranteed noise levels described below may vary depending on a range of factors such as operating conditions, cooling fan speed, engine	
Exterior sound power level at cooling fan max. speed	115dB(A)
Operator sound pressure level (ISO 6396:2008)	75dB(A)
Exterior sound power level (ISO 6395:2008)	115dB(A)

# Technical Specifications



## SPECIFICATIONS & DIMENSIONS

Label	Description	Unit	Value
A	Transportation length (bucket laid flat on the ground)	mm	9560
B	Overall length (without bucket)	mm	7995
C	Wheel base	mm	3700
D	Min. ground clearance	mm	480
Z	Height - top of exhaust pipe	mm	3715
E	Height - top of cab	mm	3730
F	Height - cab roof lug	mm	3770
G	Height - top of warning light	mm	3950
L	Max. lift height	mm	6430
K	Pivot height at max. lifting	mm	4600
J	Lift arm clearance at max. lifting	mm	3985
N	Dumping angle for max. lifting and dumping	°	45
H	Dumping height for max. lifting and 45° dumping	mm	3370
M	Dumping reach for max. lifting and 45° dumping	mm	1340
T	Digging depth	mm	80
I	Pivot height at transport position	mm	550
O1	Rollback angle on ground	°	42
O2	Rollback angle at transport position	°	48.5
O3	Rollback angle at highest position	°	60
R	Steering angle	°	40
a <sub>1</sub>	Turning radius (outside of bucket)	mm	7495
a <sub>2</sub>	Radius of the outside of tire	mm	6760
a <sub>3</sub>	Turning radius (center of outside tire)	mm	6350
a <sub>4</sub>	Radius of the inside of tire	mm	5910
X	Wheel track	mm	2460
Y	Overall width	mm	3350
V	Gradeability	°	≥25
W	Bucket width	mm	3430

Power system	Standard	Optional
Engine	•	
Engine oil remote drainage	•	
Intake preheating	•	
Fuel pre-filter with water separator	•	
Reversible cooling fan	•	
Centrifugal air pre-filter	•	
Coolant drain outlet port	•	
Turbocharger flameout delay		•
Fastfill system		•
Rapid engine oil filling system		•
Torque converter-transmission system	Standard	Optional
Manual/automatic shift	•	
Rapid transmission oil filling system		•
Drive axle system	Standard	Optional
Front axle limited slip differential locking	•	
Michelin 29.5R25 L-5 tire		•
Aeolus 29.5R25 L-5 tire		•
Hydraulic system	Standard	Optional
Two-way electric control valve	•	
Piston pump	•	
Hydraulic oil cooler	•	
Diagnostic pressure fittings	•	
Independent cooling system	•	
Boom lift limit	•	
Automatic bucket leveling	•	
The cooling fan turns forwards and backwards	•	
Double acting hydraulic cylinder	•	
Steering wheel steering	•	
Emergency steering		•
Drive stability system (RIDE Control)		•
Anti-explosion valve (lifting system)		•
Anti-explosion valve (tilting system)		•
Rapid hydraulic oil filling system		•
Three-way working hydraulic system		•
Handle steering system		•
(steering wheel/handle steering, only an option available)		•
Brake system	Standard	Optional
Independent dual-circuit service brake	•	
Parking brake, and electro-hydraulic control	•	
Single-pedal brake system	•	
Dual-pedal brake system		•

Electrical system	Standard	Optional
Air filter clogging alarm display	•	
Battery voltage display	•	
Fuel level display	•	
Engine speed display	•	
Engine oil pressure display	•	
Engine coolant temperature display	•	
Engine fault code display	•	
Transmission oil temperature display	•	
Transmission fault code display	•	
Parking brake display	•	
Low pressure brake alarm display	•	
Reverse camera system	•	
Front and rear windshield washers	•	
Front and rear windshield wipers	•	
Main power supply switch	•	
FM radio	•	
Hood lift button	•	
360° reverse camera system		•
Weighing system		•
Reverse sensor system		•
Engine emergency stop function		•

Cab	Standard	Optional
ROPS/FOPS Cab	•	
Interior rearview mirror (1 piece)	•	
Exterior rearview mirror (2 pcs)	•	
Right sliding window	•	
Non-slip mat (indoor)	•	
Front sunshade	•	
Adjustable air suspension seat	•	
Seat belt	•	
Steering wheel (adjustable for up-down, and front-back)	•	
Emergency escape hammer	•	
Tinted safety glass	•	
Cup holder	•	
Door lock key	•	
Air conditioning system	•	
Cab pressurization system		•
Rearview mirror with electric heater		•
Glass protective net (front)		•
Glass protective net (rear)		•
Three-point seat belt (optional)		•
External device	Standard	Optional
Left and right anti-slip rack	•	
Front fender	•	
Traction pin	•	
Articulated locking rod	•	
Rear hood fender		•
Protection plate for transmission bottom		•
Anti-corrosion technology	Standard	Optional
Complete machine subject to heavy-duty		•
The electrical wiring harness is sealed with glue		•
Operating link system	Standard	Optional
Label arm	•	
High-dump boom		•
4.0 to 8.0 bucket		•

Lighting and alarm system	Standard	Optional
Dual LED headlight with high and low	•	
Dual-brake light (Tail light)	•	
Turn signal light with flickering hazard	•	
LED working light (4 front, and 2 rear)	•	
Reversing alarm (Sound)	•	
Rotating beacon	•	
Horn	•	
Pressure inspection	Standard	Optional
Working system pressure diagnostic interface	•	
Steering system pressure diagnostic interface	•	
Transmission pressure diagnostic interface	•	
Automatic lubrication system	Standard	Optional
Automatic lubrication system	•	
Single-line lubrication system		•