



XC9108

W H E E L L O A D E R


SOLID TO SUCCEED



Operating Weight	35000 kg
Rated Power	277 kW
Rated Load	11000 kg
Bucket Capacity	6.2 m ³

XC9108 WHEEL LOADER

The XC9108 wheel loader is a top-tier model developed by XCMG, specifically designed for heavy-duty working conditions. This product incorporates advanced manufacturing technologies, and was developed through extensive market and technical research to better meet market needs. With exceptional performance and streamlined appearance, it represents significant



Advanced Technology

- Heavy-duty wet axle
- Full Variable hydraulic articulated steering
- Electric intelligent cooling system
- Electrostatic powder coating and specialized anti-corrosion technology



High Efficiency

- Load-sensitive full variable hydraulic system
- Electronic controlled automatic shifting with KD mode/neutral start protection/gear shift lock function.



Safe and Reliable

- Emergency brake
- ROPS&FOPS cab
- Heavy-duty frame structure
- Double-tapered roller bearings



Comfortable Operation

- Air-suspension shock absorption composite control seat
- Intelligent temperature-controlled air-conditioning system
- Pressurized cab



Convenience Control

- FNR integral joystick
- Bucket auto-leveling
- Rearview camera



Easy Maintenance

- Centralized maintenance point
- Independent heat-dissipation system
- Automatic lubrication system
- Large-angle back-flip hood

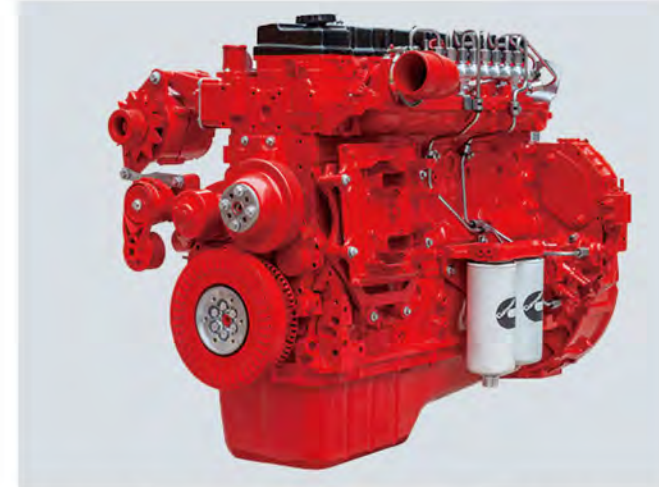


| PERFORMANCE



Powering Your Productivity

The optimized structure reduces irregular welding seams and effectively enhances the robustness of critical bearing components, demonstrating exceptional performance under torsion and impact loads in various conditions.



- The Cummins X12 engine features an electric start and shut-off function. With a three-stage filtration system and a multi-level fuel filtration system, it is designed to meet the requirements of various working conditions.



- The load-sensing fully variable hydraulic system delivers pressure and flow according to the equipment needs, significantly improving fuel efficiency and operational productivity.
- The full variable hydraulic articulated steering system: the dual steering limits contain hard (mechanical) and soft (hydraulic) limits, which can reduce the steering impact and enhance reliability.



- The integrated control joystick for the working equipment combines the FNR switch and KD gear function (single-handle operation), allowing quick and convenient changes to the machine's travel direction and reducing the overall loading cycle time.
- The electronically controlled intelligent cooling system is energy-efficient, saving the time required for routine maintenance and servicing.



- The transmission system features an electronically controlled gearbox with KD gear, along with neutral start protection and gear lock functions.
- The drive axle features a heavy-duty wet-type design with maintenance-free multi-disc wet brakes, extending the axle's service life.

| SAFETY



Safe Choice Reliable Outcomes

With independent intellectual property rights of XCMG's new high-end series appearance, the loader is equipped with double emergency stop switches and the rearview camera, that especially suitable for loading and unloading in sand and gravel quarries, mixing stations, and coal yards.



- Full hydraulic dual-circuit wet service brake and caliper disc parking brake; Front and rear axle brakes are independent of each other and feature low-pressure alarm protection.
- The combination of emergency braking and parking braking ensures safe operation and driving.



- The standard emergency steering system activates quickly if the primary system fails, ensuring safe loader steering, reducing accident risk, and promoting a safe work site.



- The finite element analysis and load-spectrum-based optimized design of heavy-duty loader structural components and fatigue test verification can effectively cope with severe working conditions.
- Reducing stress concentration and eliminating local weakness ensures the structural components meet the strength requirements for uneven terrain.



- Double-tapered roller bearings are utilized to enhance loading capacity and driving stability.
- Weld toe fatigue improvement technology effectively prevents weld cracks in harsh conditions, ensuring durability and reliability.
- Electrostatic powder coating and specialized anti-corrosion technology effectively solve rusting and corrosion.

COMFORT



Streamlined Comfort For Every Operator

The spacious cab is user-oriented and scientifically designed to ensure operational safety, reduce fatigue, and provide the operator with an optimal operating experience.



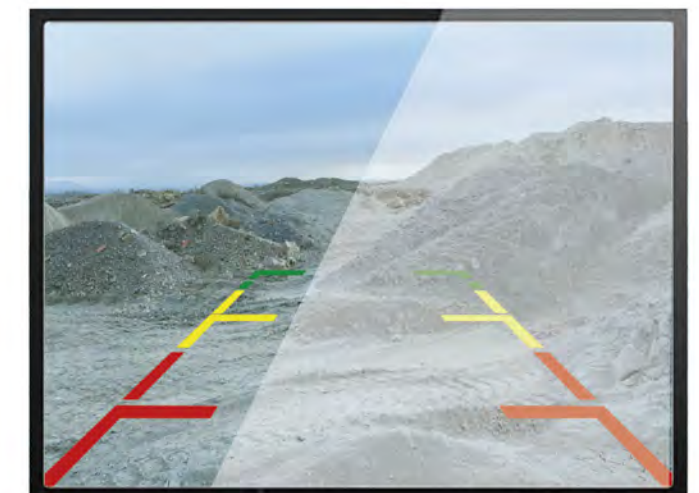
- The bucket has an automatic leveling function at any position, removing the need to adjust the bucket state for subsequent loading tasks, thereby simplifying the operator's workload.



- The ride control ensures the equipment maintains stable operation without external interference.
- The load-sensitive electro-hydraulic steering system enables precise machine control, enhancing operator comfort.



- The intelligent temperature-controlled high-power air conditioning system and pressurized cab ensure a comfortable, quiet, and dust-free working environment with optimal temperature.
- Connected to the frame with silicone oil shock absorbers, it significantly reduces cab vibration.
- The air-suspended shock-absorption composite control seat ensures a comfortable operating experience.



- The advanced rearview camera provides the operator with great rear visibility, ensuring reliable safety during operations.

MAINTENANCE



Simple Maintenance Smart Solution

The loader features a maintenance platform with a centralized design of maintenance points. The back-flip hood can be opened at a large angle, ensuring easy access to the maintenance points and minimizing downtime.



- Left and right side accesses ensure safety and convenience. With multiple maintenance platforms and centralized service points, the loader features rotatable structures of the hood, facilitating easy maintenance and minimizing downtime.



- The large-angle rear-flip hood provides full access to the engine and cooling system, making maintenance tasks like checking oil, filling up engine oil levels and replacing filters effortless and convenient.



- The centralized lubrication system automatically applies grease to each articulation point, preventing lubrication failure caused by clogging.
- Efficiently filling fuel and hydraulic oil improves overall filling efficiency.
- Centralized oil sampling offers high convenience.



- Global coverage of marketing and service outlets ensures exceptional support.

MAIN SPECIFICATIONS

Overall Parameter

Operating Weight	35000kg
Bucket Capacity	6.2m ³
Rated Load	11000kg
Max. Breakout Force	280kN
Tipping Load	Straight≥25800kg Fully articulated≥22100kg

Engine

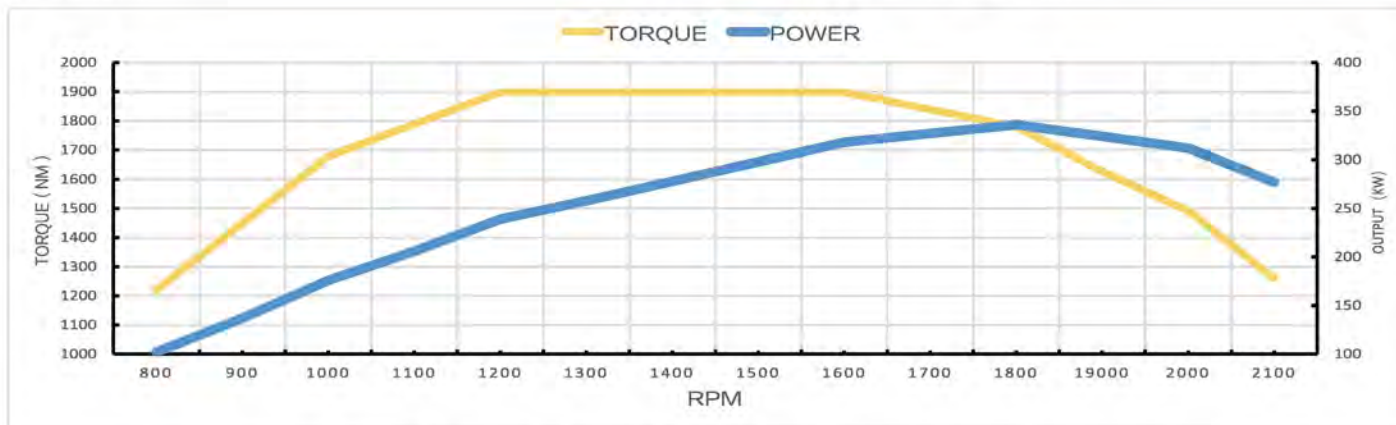
Type	In-line six-cylinder, air-to-air intercooler, electronic common rail high-pressure injection
Rated Power	277kW @ 2100 rpm
Max. Power	336kW @1800 rpm
Max. Torque	1898 N·m @ 1200-1600 rpm
Emission Stage	China Stage III
Displacement	11.8 L

Driveline

Transmission	Model Type	4WG310 Full automatic transmission	
Travel Speed	Forward	1st	6.5 km/h
		2nd	11.5 km/h
		3rd	24.5 km/h
		4th	35 km/h
	Reverse	1st	6.5 km/h
		2nd	11.5 km/h
Brake Distance		14m	
Tyre		875/65R29	

Axle

Type	Four-wheel drive
Front Axle	Fixed
Rear Axle	Center Oscillation, ±10°
Reduction gear	Planetary final drive in wheel hubs
Differential	Front axle differential



Engine External Characteristic Curve

Cab

Cab	ROPS & FOPS cab. Equipped with front sunshade, interior rearview mirror, fire extinguisher, emergency break hammer, and coat hook. The adjustable steering column, air-suspension seat, and follow-up operating box ensure a comfortable operating experience.
-----	--

Brake

Service Brake	Four-wheel full hydraulic wet brake with good heat dissipation ensure safe and reliable brake.
Parking Brake	Electro-hydraulically actuated, Spring applied brake
Emergency Brake	The emergency stop button on the inside and outside help stop the engine in an emergency.

Hydraulic System

Type	Full variable hydraulic system
Pump	Piston pump
Rated Flow	540L/min
Control Valve	Standard hydraulic control multiway valve
System Pressure	28MPa
Operating Hydraulic Circuit	Lifting circuit for lifting, holding, lowering and staying movable status of the boom cylinder circuit for returning, holding and tipping the bucket
Total Circle Time	≤ 11.5s

Steering System

Type	Flow amplifier load- sensitive steering system
Pump	Piston pump
Rated Flow	270L/min
Hydraulic Cylinder	21MPa
System Pressure	2-110×555mm
Steering Angle	±40°

Sound

Exterior Sound Power Level (Max. Cooling Fan Speed)	116dB
Sound Pressure Level (ISO 6396:2008)	76dB
Exterior Sound Power Level (ISO 6395:2008)	116dB

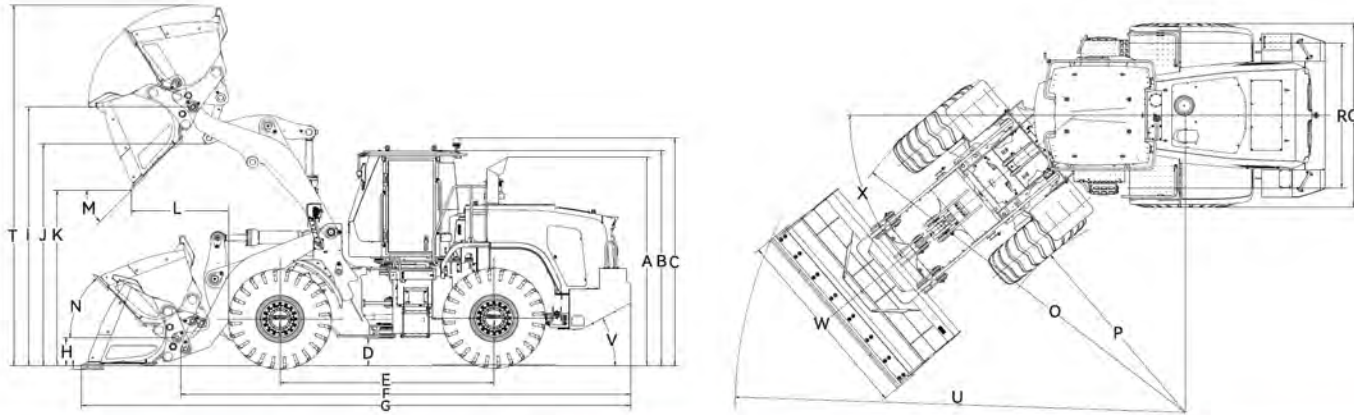
The guaranteed sound levels described below may vary depending on factors including operating conditions, cooling fan speeds, engine type, and so on. Hearing protection is required if the operator works in an improperly maintained cab or is exposed to noisy environments with open doors or windows.

Maintenance

*Reference only. Filling volume is based on the actual scale.

Item	Filling Capacity
Diesel	420L
Engine Oil	34L
Front Axle	54L
Rear Axle	54L
Transmission	64L
Coolant	62L
Hydraulic Oil	160L

MAIN SPECIFICATIONS



Dimension and Specification		Parameter
A	Height to top of exhaust	3715mm
B	Height to top of cab	3730mm
C	Height to top of warning Light	3950mm
D	Ground clearance	470mm
E	Wheelbase	3800mm
F	Overall length (without bucket)	7480mm
G	Transfer length (bucket on the ground)	9800mm
H	Height to the hinge pin (bucket leveling)	550mm
I	Height to hinge pin at full lift	4650mm
J	Lift arm clearance at full lift	3980mm
K	Dumping clearance: bucket at 45°	3250mm
L	Dumping reach: bucket at 45°	1400mm
M	Dumping angle at full lift (on stopper)	45°
N	Rollback angle	48°
O	Turning radius: over tyres	6850mm
Q	Width over tyres	3398mm
R	Wheel track	2500mm
T	Max lifting height	6450mm
U	Turning radius: over bucket	7755mm
V	Departure angle	25°
W	Bucket width	3600mm
X	Steering angle	40°

• The technology of XCMG wheel loaders is subject to constant improvement and upgrading. In case the specifications or detailed appearance contained in this brochure differ from actual products, the latter shall prevail.
 • XCMG reserves the right of final interpretation for the above. Our products may be modified without prior notice to users.

EQUIPMENT

Powertrain	STD	OPT
CUMMINS Engine	●	
Engine intake preheating	●	
Engine oil long-distance discharge	●	
Oil-water separator	●	
Centrifugal air pre-filter	●	
Coolant discharge outlet port	●	
Fuel fast filling		●
Engine timing/delay shutdown		●
Engine oil fast filling		●
Transmission & torque converter		
Manul/automatic gear shift	●	
Transmission oil fast filling		●
Axle		
Front axle limited slip differential lock	●	
875/65R29 Tyre	●	
875/65R29 Tyre (Michelin)		●
875/65R29 Tyre (Taikaaying)		●

Hydraulic System	STD	OPT
Independent cooling system	●	
Reversible cooling fan	●	
Bucket lift limit	●	
Bucket auto-leveling	●	
Hydraulic oil cooler	●	
Single pedal brake	●	
Emergency steering		●
Anti-explosion valve (boom)		●
Anti-explosion valve (bucket)		●
Hydraulic oil fast filling		●
Transmission oil fast filling		●
Ride control		●
Dual pedal brake		●

Cab	STD	OPT
ROPS/FOPS cab	●	
Adjustable steering wheel	●	
1 interior rearview camera	●	
2 Exterior rearview camera	●	
Right Slide Window	●	
Protective mat (interior)	●	
Front sun visor	●	
Electrical heating	●	
air-suspending adjustable seat	●	
"Two-point" Safety belt	●	
Tinted safety glass	●	
Cup holder	●	
Emergency hammer	●	
Clothes hook	●	
Magazine bag	●	
Cooling and heating air-conditioner	●	
Pressurized cab		●
Protective cab screen (front)		●
Protective cab screen (rear)		●
"Three-point" Safety belt		●
Electrical heating rearview mirror		●

Pressure check	STD	OPT
Working system pressure diagnosis interface	●	
Steering system pressure diagnosis interface	●	
Transmission pressure diagnosis interface	●	

Electrical System	STD	OPT
Electrical air cleaner blockage alert	●	
Battery voltage display	●	
Engine tachometer	●	
Engine oil pressure gauge	●	
Fuel level display	●	
engine coolant temperature display	●	
Engine malfunction code	●	
Transmission oil temperature display	●	
Transmission malfunction code	●	
Working hour display	●	
Rearview camera	●	
Parking brake display	●	
Low-pressure brake warning display	●	
Battery cathode switch	●	
Single joystick control (FNR integral switch)	●	
Hood lifting button		●
Double headlights with low beam/high beam(front)		●
Working light (cab top/4 front 2 rear)	●	
Rotatable warning light	●	
2 Rear combination lights (reserve, turn signal, clearance light, brake light)	●	
2 LED working light (rear hood)	●	
Front wiper	●	
Rear wiper	●	
Radio/USB player	●	
360° panoramic image		●
Reserving radar		●
Electric weigh system		●
Emergency engine shutdown		●
Working light (cab top/4 front 4 rear)		●

Safety	STD	OPT
Left/right anti-slip stairs	●	
Splash guard (front)	●	
Boom safety rod	●	
Articulation lock rod	●	●
Rear hood splash guard		●
Transmission Chassis guard		●

Lubrication system	STD	OPT
Automatic lubrication system	●	●
Lubrication system (single-line)		●

Working connecting rod/ bucket	STD	OPT
Standard arm	●	
High lift		●
6.2m ³ (blade-type)	●	
4.0m ³ rock shovel bucket		●
5.0m ³ rock shovel bucket		●
4.0-8.0 blade bucket		●

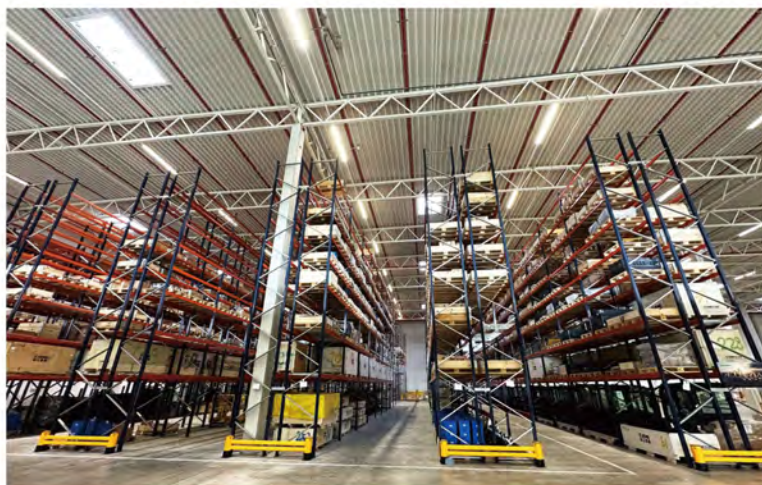
Other	STD	OPT
Traction pin	●	
Anti-corrosion spray		●
Electric wiring harness glued and sealed		●

OPTIMUM SERVICES XCMG GUARANTEED



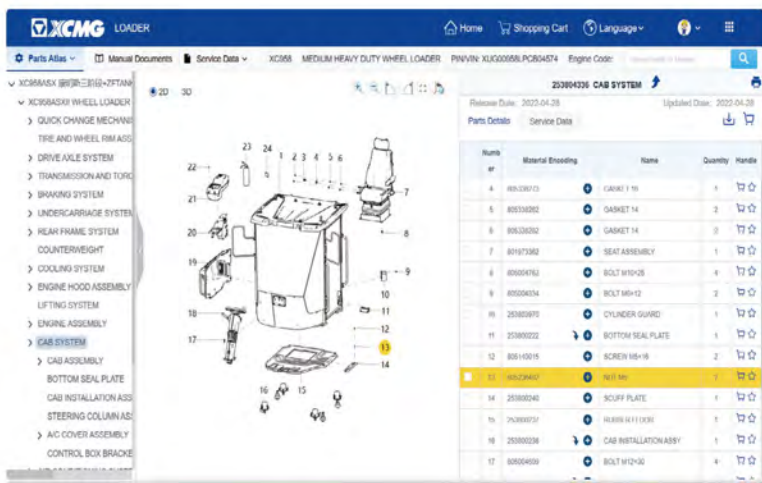
Telematic Information Processing

Remote Diagnosis. GPS terminal system monitors the construction state of the machine and the operat-



Professional Integrated Complete Solutions

XCMG has built a strong reputation based on the quality, reliability and durability of its construction machinery. What's more, XCMG has gradually established a service network to constantly provide its local integrated and highly efficient complete solutions for all customers.



Full Range of Services Ready for you

In order to respond to your needs as fast as possible, XCMG's experts are on their way to your job site from one of our facilities near you. Full range of services are available in order to reduce your total cost of ownership and increase your revenue.



Plateau Construction



Forestry Construction



Animal Husbandry



Road Construction



Stone Mining



Extreme Cold Working Condition



Mine Engineering



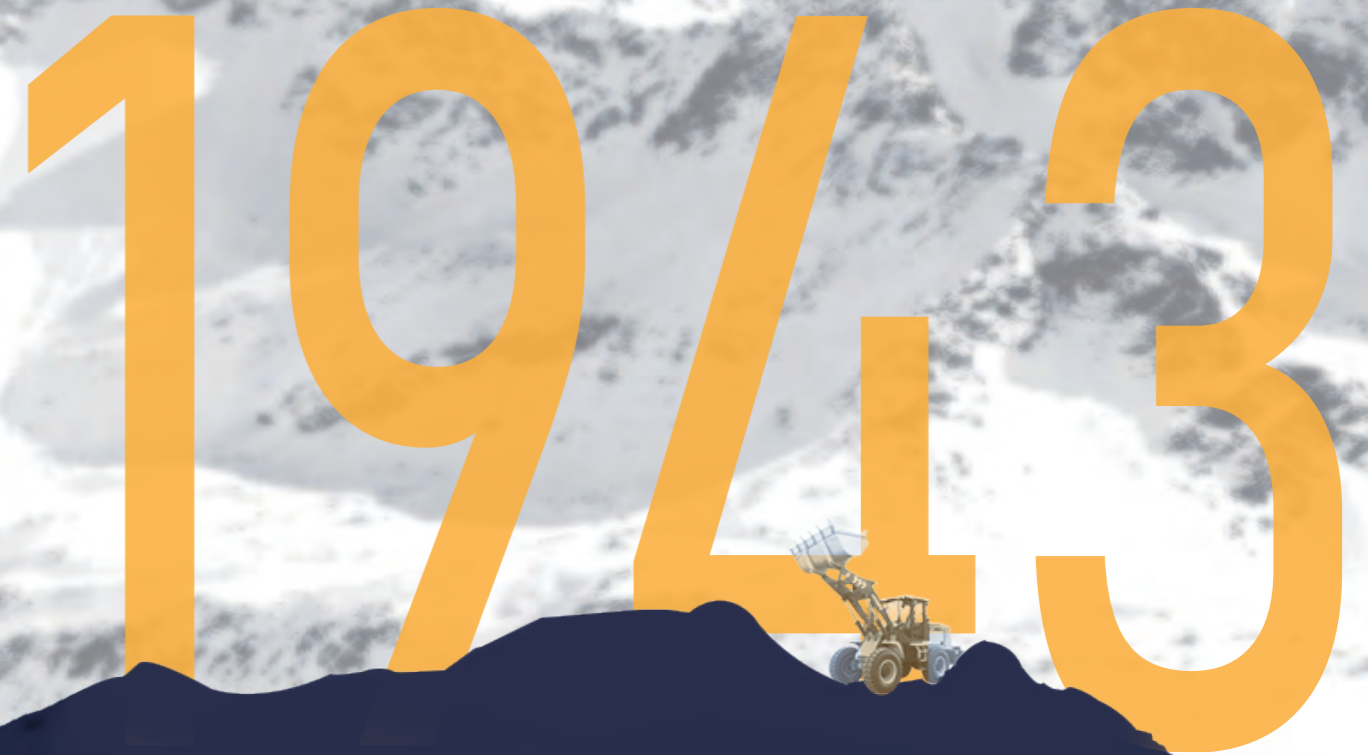
Grain Shoveling

INTRODUCTION

Our Mission : Empower Solid Future.

Founded in 1943, XCMG is a multinational corporation with the most comprehensive range of competitive, influential products in the construction machinery industry. Our mission is to Empower Solid Future by providing complete sets of engineering equipment and solutions for global customers. It is the enterprise with the most complete categories and complete sets in the world's construction machinery industry. As of now, XCMG has retained its No.1 position in China's construction machinery industry for 35 consecutive years and is ranked NO.3 in the global construction machinery industry. Today, we sell products in over 190 countries and regions worldwide. We drive enterprises to smart, sustainable, and efficient solutions through technological innovation and excellent management solutions.

XCMG Earthmoving Machinery Business Division is a core machinery R&D and manufacturing enterprise under XCMG, specializing in the research and development, manufacturing, and sales services of a full range of loaders from 0.4 to 35 tons, including new energy loaders, skid-steer loaders, and backhoe loaders. It is the first enterprise in China and the third globally to possess the production capacity of loaders with a loading capacity exceeding 35 tons. For 35 consecutive years, it has maintained its position as the top loader exporter in China. XCMG Earthmoving Machinery Business Division has always adhered to the core values of "Responsibility, Virtue, and Fortitude." XCMG perseveres through challenges and forges ahead with determination!



1943

2000+

Overseas Service & Parts Center

330+

Overseas Dealer

40+

Overseas Office

30+

Overseas Company

10+

Overseas Manufacturing Base & KD Factory

5+

Overseas R & D Center