



SOLID
TO SUCCEED

XC9150

W H E E L L O A D E R


SOLID TO SUCCEED



Operating weight	55000 kg
Engine rated power	563 kW
Rated load	15000 kg
Bucket capacity	7.7m ³

XC9150 is an electric-driven loader independently developed by XCMG, featuring a rated working load of 15 tons and has become the leader of international super large-tonnage loaders. With its long service life, low maintenance costs, and high reliability, this loader is well-suited for large-scale open-pit mining, loading of ore trucks, short-distance transportation and various other applications. It is the ideal choice for working in conjunction with XCMG 35-90 ton ore trucks.



Hybrid power and energy recovery, effectively recovering energy generated by the "integrated electro-hydraulic brake" and using it to drive the wheel-side motors, reducing mechanical brake wear.



High-voltage electric drive system, with high transmission efficiency, fast response speed, and special functions such as anti-slip, anti-skid, limp-home return, and automatic protection.



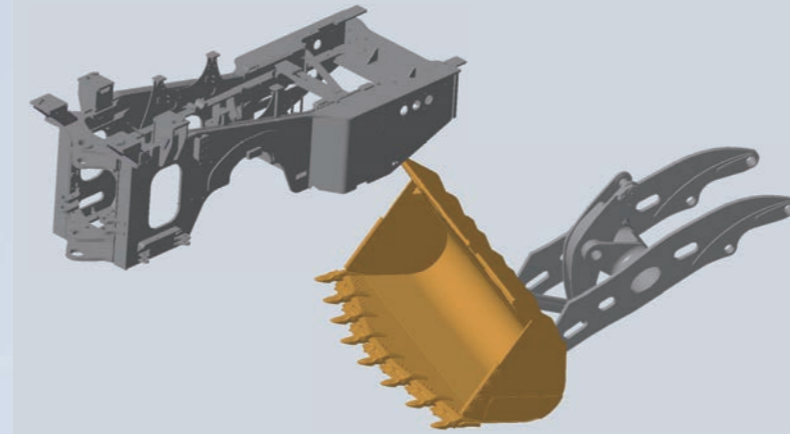
Intelligent human-machine visual interaction system, providing real-time, safe, convenient, and fast monitoring and diagnosis of the entire vehicle's operating information, with a comprehensive safety protection system.



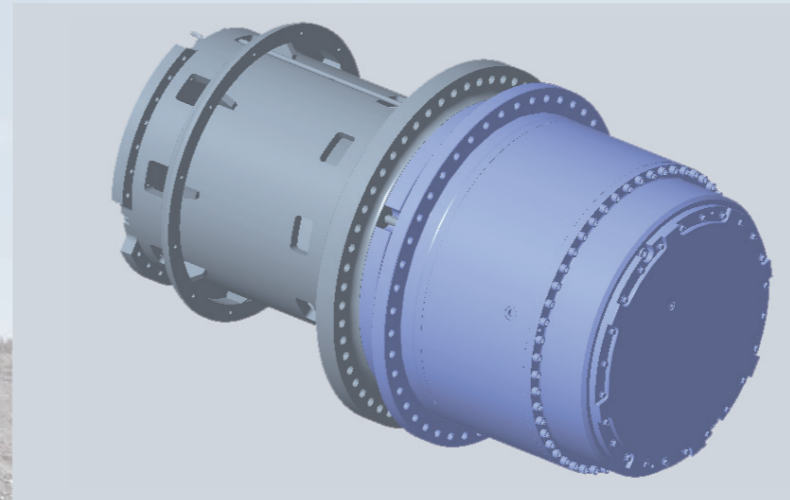
XCMG's core technology "electro-hydraulic proportional intelligent control system + electro-hydraulic system with positive flow control + load-sensing electro-hydraulic handle steering system", achieving precise and efficient compound actions such as loading, driving, and steering during operation.



PERFORMANCE



Structural components are made of low-temperature high-strength structural steel, with key stress-bearing parts made of high-strength cast steel, providing strong load-bearing capacity to withstand torsion and impact under various working conditions. XCMG's distinctive working device adopts high-strength structural steel and wear-resistant steel for the boom and bucket, adapting to the harsh working conditions with variable loads.

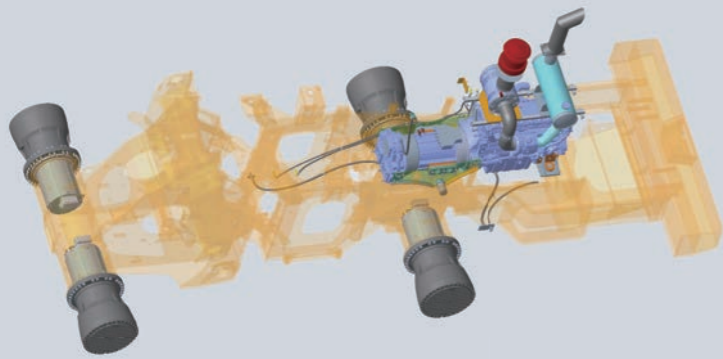


The transmission system consists of a multi-stage planetary wheel system, providing high transmission ratio and large torque.



Innovatively adopting an electric drive-train, equipped with highly reliable electric motors, we've eliminated the need for a transmission and drive axle, significantly reducing the failure rate of the powertrain.

RELIABILITY



The electric drive system offers high transmission efficiency, high control precision, and fast response speed, saving over 25% fuel compared to loaders of the same level with hydraulic transmission. AC motors have the advantages of high reliability, low maintenance rate, and high output torque.



XCMG's distinctive working device is equipped with a limit sensing mechanism with angle memory function, offering functions such as lifting limit, automatic leveling, ensuring accurate positioning during lifting and unloading, reducing impacts, avoiding repetitive operations, and reducing workload while making the operation more efficient.



The electro-hydraulic positive flow hydraulic system, combined with constant power control technology, enhances the energy efficiency, rapid response, maneuverability, and joint operation efficiency of the hydraulic system. Hybrid power and energy recovery effectively recover the energy generated by the "integrated electro-hydraulic brake" and use it to drive the wheel-side motors, reducing mechanical brake wear.



SAFETY

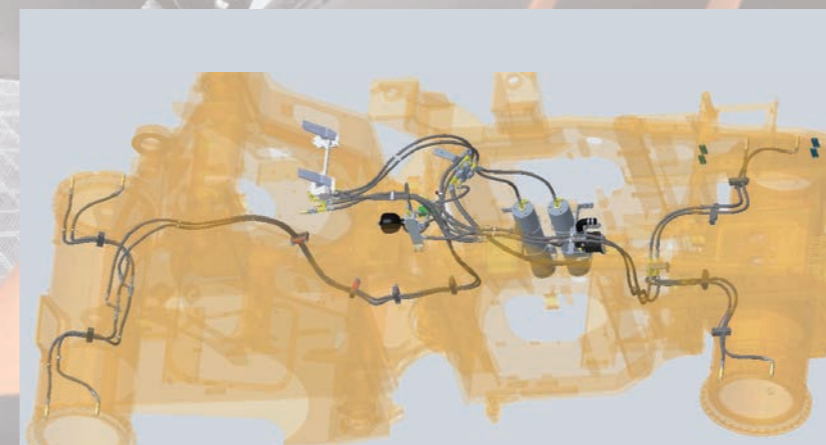


Intelligent temperature-controlled high-power air conditioning system in the cab provides a comfortable working environment with suitable temperature, ultra-quiet, and dust-free. Adjustable air suspension streamline high-back seats. Noise to the operator ≤ 75 dB.



Equipped with a 360° surround view reverse image system to reduce blind spots and improve operational safety.

The CAN bus communication technology offers strong resistance to interference, ensuring accurate detection of engine data and other parameters. The reliable integrated instrument panel provides precise readings and features audible and visual alarm signals, allowing for real-time monitoring of the machine's operating status.



Electric retarder braking: Controlled by the brake pedal, it allows the loader to come to a complete stop without using mechanical brakes.

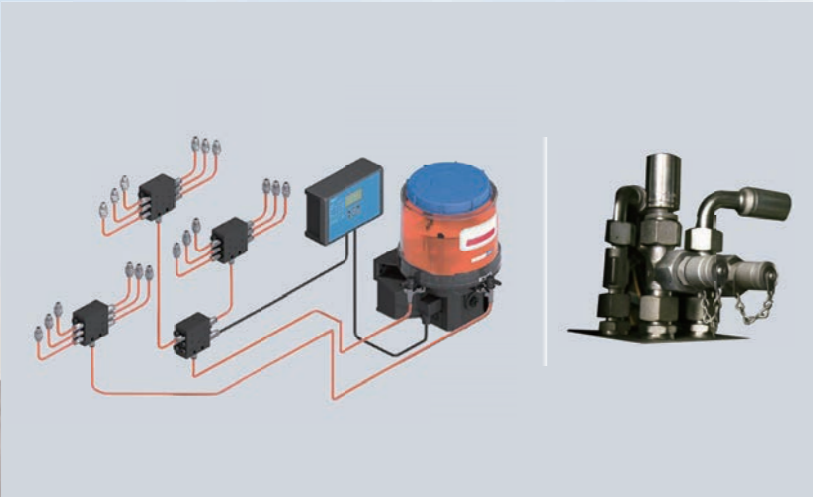
Hydraulic braking: Full hydraulic multi-friction plate wet brake, providing strong braking torque to meet the emergency braking requirements under various working conditions.

Equipped with 3 emergency stop and a power isolation switch to help stop the engine in an emergency.

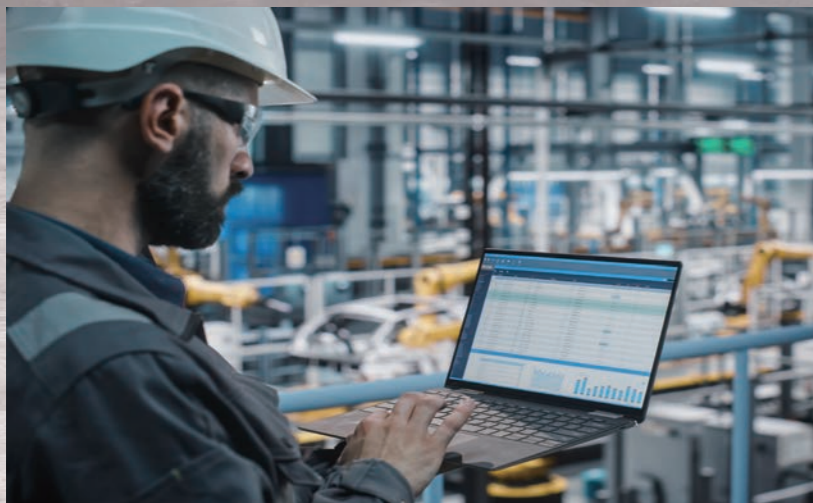
MAINTENANCE



Left and right side passages for safe and convenient access. Multiple inspection platforms and centralized maintenance points designed throughout the vehicle, with several hood locations adopting a rotatable structure for convenient maintenance, ensuring minimal downtime.



Quick refueling for fuel and hydraulic oil to improve refueling efficiency. Centralized sampling for hydraulic oil for convenience. Centralized hydraulic system pressure test ports for easy system diagnostics and maintenance.



XCMG's intelligent management system, launched based on National III equipment, allows users to monitor equipment operation and maintenance status in real time via devices such as smartphones, tablets, and computers. Through data collection and analysis, it achieves precise evaluation of user projects, ensuring the best equipment matching.



MAIN SPECIFICATIONS

Overall Parameter

Type	Parameter
Operating weight	55000kg
Bucket capacity	7.7m ³
Rated load	15000kg
Maximum breakout force	370kN
Tipping load	Straight≥42000kg
	Fully articulated≥36000kg

Engine

Manufacturer Model	CUMMINS , QSM15
Type	In-line six-cylinder, air-to-air intercooler, electronic common
Rated power	563KW@2100RPM
Maximum power	563kW
Maximum torque	3000Nm
Displacement	14.5L

EIC System

Whole voltage platform	600V	
Rated power	4×145kW	
Max rated power	4×280kW	
Max rated output torque	4×1205Nm	
Output torque	4×3500Nm	
Battery Type	Power mode	
Power battery voltage	600V	
Hypobaric electric system	118kWh	
Dc charging power	240kW	
Electrical system voltage (low)	24V	
Battery voltage	24V	
Walking motor	Amount	4
	Type	Permanent magnet synchronous motor
	Single rated output power	145kW
	Single maximum output power	280kW
Electric generator	Amount	1
	Type	Permanent magnet synchronous motor
	Single rated output power	350kW
	Single maximum output power	450kW
Charging pile	Single150kW(250A)	
Charging power	118kWh	
Charging time	0.75h	

Driveline

Travel speed	Forward	1st	12km/h
		2nd	32km/h
	Reverse	1st	12km/h
		2nd	32km/h
Brake distance	< 14.22m		
Tyre	35/65R33		
Minimum ground clearance	570mm		

Hydraulic system

Pumps	Electric control pump
Rated flow	145ml/r
Control valve	Electric-hydraulic proportional
System pressure	30MPa
Operating hydraulic circuit	Lifting circuit for lifting, holding, lowering and staying movable of the boom
Operating hydraulic circuit	Lifting cylinder-2×210×125mm
	Tipping bucket cylinder-1×260×140mm
Brake system (service brake, parking brake, emergency brake)	Full hydraulic

Axle

Drive system	Four-wheel independent drive
Front axle	Fixed
Rear axle	Central oscillation, with 12 ° angle to each side
Reduction gear	Lanetary final drive in wheel hubs
Differential	Electrical differential

Steering system

Type	Electric control pump
Rated flow	145ml/r
Hydraulic cylinder	2×130×80mm
System pressure	21MPa
Steering angle	±40°

Cab

Cab	ROPS&FOPS certified; The cab is Adjustable steering column and operation box, air suspending seat and adjustable operation box.
Heating power	8kW
Cooling power	4.5kW

Sound

Sound pressure level (ISO 6396:2008)	78dB
Exterior sound power level (ISO 6395:2008)	106dB

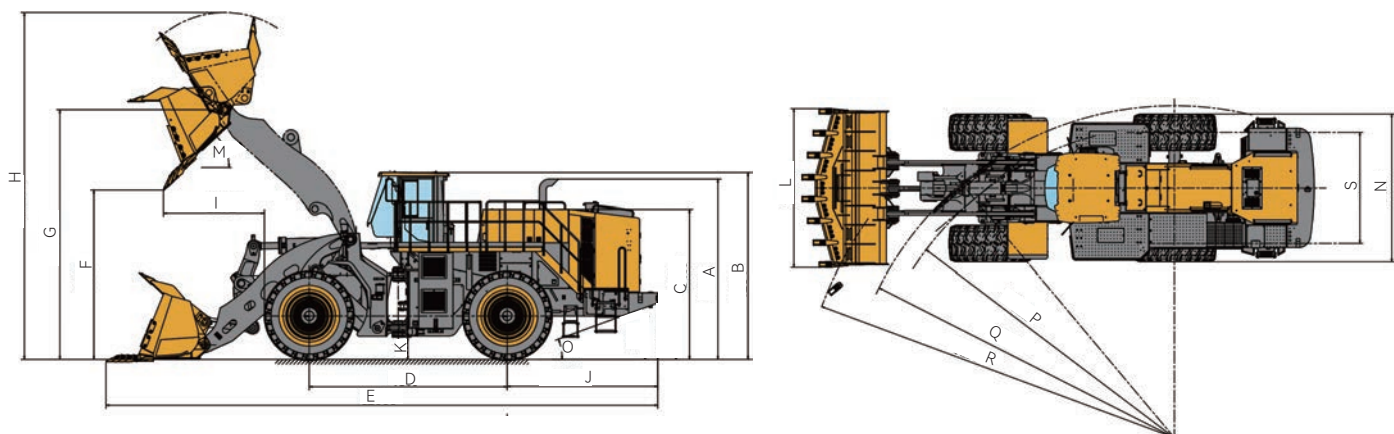
The guaranteed sound levels described below may vary depending on factors including operating conditions, cooling fan speeds, engine type, and so on. Hearing protection is required if the operator works in an improperly maintained cab or is exposed to noisy environments with open doors or windows.

Referenced Filling capacity

*eference only. Filling volume is based on the actual scale.

Ltem	Filling capacity
Diesel engine oil	600L
Engine oil	52L
Reduction gear	50L×4
Hydraulic gearbox	5L
Coolant	120L
Hydraulic oil	300L

MAIN SPECIFICATIONS



	Dimension and Specification	Parameter
A	Height to Top of Exhaust	4086mm
B	Height to Top of Cab	4234mm
C	Height to Top of Hood	3409mm
D	Wheelbase	4500mm
E	Overall Length	12538mm
F	dumping height	3838mm
G	Height to Hinge Pin, Fully Raised	5662mm
H	Max Lifting Height	7873mm
I	dumping height	2292mm
J	length rear: axle to bumper	3420mm
K	Ground Clearance	505mm
L	Bucket width	3875mm
M	Dumping angle for maximum lifting and dumping	47°
N	Width over tyres	3606mm
O	Departure angle	20°
P	Turning radius: center of tyres	7622mm
Q	Turning radius: outside of tyres	8108mm
R	Turning radius: over bucket	9214mm
S	Wheel track	2710mm

- The technology of XCMG wheel loaders is subject to constant improvement and upgrading. In case the specifications or detailed appearance contained in this brochure differ from actual products, the latter shall prevail.
- XCMG reserves the right of final interpretation for the above. Our products may be modified without prior notice to users.

EQUIPMENT

Powertrain	STD	OPT
CUMMINS Engine	●	
Engine intake preheating	●	
Reduction gear	●	
Electrical differential	●	
Parking brake	●	
Service Brake (Enclosed wet-disc)	●	
Power cutoff	●	
Emergency stop	●	
Transmission oil level inspection	●	
35/65R33 L5	●	
Double Coin Tire	●	
Techking Tyre		●
Michelin tires		●

Hydraulic System	STD	OPT
Bucket lift limit	●	
Bucket automatically leveling	●	
Diagnostic pressure joint	●	
Hydraulic oil cooler	●	
Anti-explosion valve		●
Ride control		●

Electrical system	STD	OPT
Electrical air cleaner blockage alert	●	
Battery voltage	●	
Engine oil pressure	●	
Fuel level	●	
Engine coolant temperature	●	
Transmission malfunction code	●	
Engine coolant temperature	●	
Engine tachometer	●	
Engine oil pressure gauge	●	
Battery voltmeter	●	
Fuel tank display	●	
Working hour display	●	
Battery main switch	●	
Electric horn	●	
Parking brake	●	
High beams	●	
Turn signal	●	
LCD Screen	●	
2 Headlights (LED)	●	
1 LED dome light	●	
2 Rear combination lights (Reserve, turn signal, clearance light, brake lights)	●	
2 Front roof working light (LED)	●	
2 Rear roof working light (LED)	●	
Main light	●	
2 Working light on the rear hood (LED)	●	
Working light	●	
Rotating warning light	●	

Cab	STD	OPT
Weigh system		●
Mirror heating		●
Rear wiper	●	
ROPS&FOPS cab	●	
RESPA pressurized filtration system		●
Protective cab screen		●
Coat hooker	●	
Roller sunshade (Rear window)		●
Tinted safety glass	●	
Magazine bag	●	
Radio/USB player	●	
Wrist supports and armrests	●	
24V to 12V DC converter (20A)	●	
Cab lock/ key	●	
Cooling and heating air-conditioner	●	
3-inch retractable safety belt and adjustable air suspension (heated)	●	
Air suspension seat	●	
Cup holder	●	
Single brake pedal		●
Dual brake pedal	●	
Start-up	●	
FNR gear	●	

Safety	STD	OPT
360° panoramic view	●	
Fire extinguisher	●	
Radar + auxiliary display		●
Fuel tank filler cap lock	●	
Boom safe lever	●	
Emergency steer		●
Manual braking release		●

Bucket	STD	OPT
5.0m³ mine bucket		●
6.5m³ mine bucket		●
7.6m³ mine bucket		●

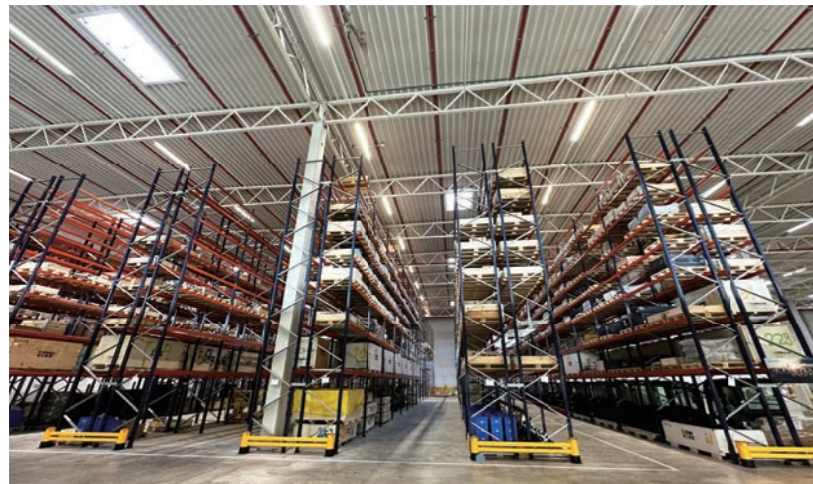
Other	STD	OPT
Counterweight	●	
Traction pin	●	
Handrails/ladders/ platforms/pedals	●	
Splash guard (front)	●	
Splash guard (rear)		●
ECD (Engine Connection Diagnosis)		●
Anti-corrosion spray	●	
Toolkit	●	
Automatic lubrication system	●	
Automatic extinguishing system		●
Fan reversal	●	
Chassis guard (Engine, transmission)	●	
Auto lubrication system (single way)		●

OPTIMUM SERVICES XCMG GUARANTEED



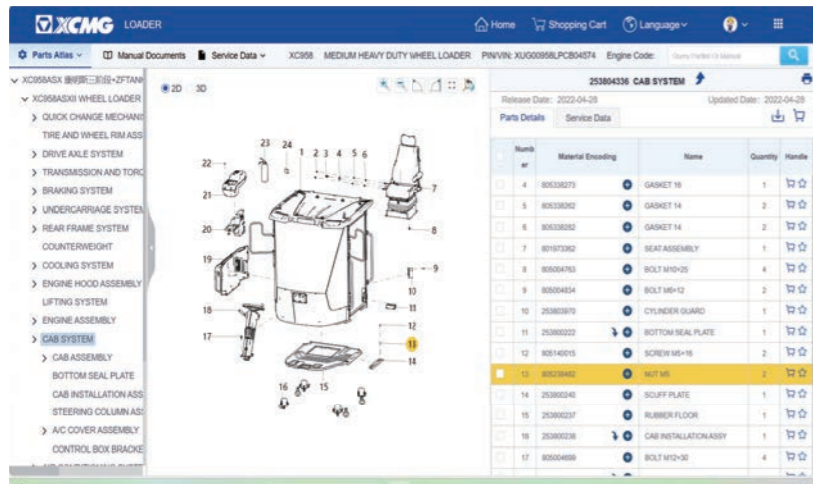
Telematic information Processing

Remote Diagnosis. GPS terminal system monitors the construction state of the machine and the operating.



Professional Integrated Complete Solutions

XCMG has built a strong reputation based on the quality, reliability and durability of its construction machinery. What's more, XCMG has gradually established a service network to constantly provide its local integrated and highly efficient complete solutions for all customers.



Full Range of Services Ready for you

In order to respond to your needs as fast as possible, XCMG's experts are on their way to your job site from one of our facilities near you. Full range of services are available in order to reduce your total cost of ownership and increase your revenue.



Plateau Construction



Forestry Construction



Animal Husbandry



Road Construction



Stone Mining



Extreme Cold Working Condition



Mine Engineering



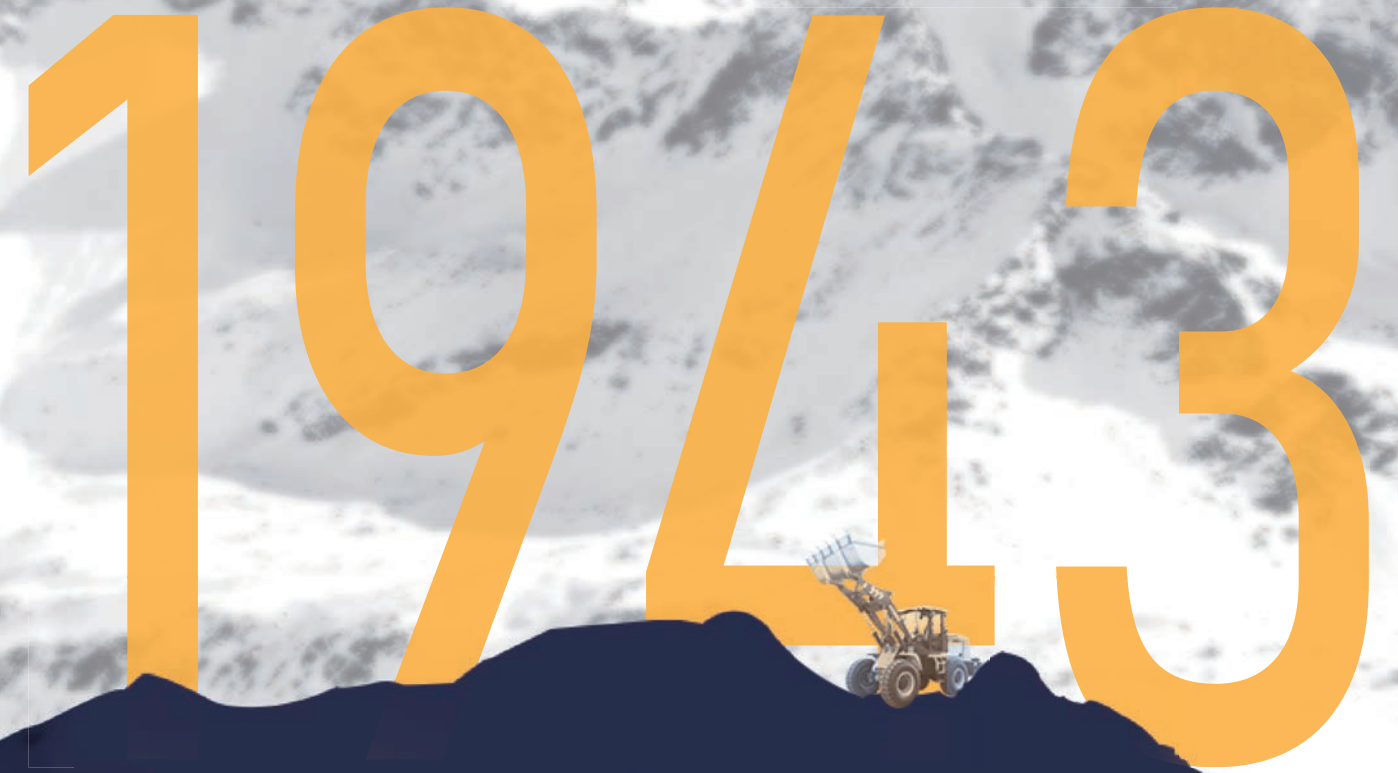
Grain Shoveling

Introduction

Our Mission and Vision: Empower Solid Future.

XCMG was initially founded as the Huaxing Iron Factory in 1943 and was established as a group in 1989. Being a trailblazer walking through the hard days in a stern and steady manner, XCMG has taken the lead in development of Chinese construction machinery industry and become a billion-dollar leading enterprise with global competitiveness and influence. XCMG's performance retained its NO.1 position in China construction machinery industry and has achieved the ranking of NO.3 in the Global construction machinery industry for 3 consecutive years and has been listed in the "World Brand 500" for 4 consecutive years.

XCMG Earthmoving Machinery Division is one of the five major business divisions of XCMG. We are professionally dedicated in the R&D, manufacturing, sale and supporting service of 0.6-35 tons full-series loaders, skid-steer loaders and backhoe loaders. In line with the business philosophy of facing the world, integrating the world and serving the world, XCMG Earthmoving Machinery Division takes the leading position in quality and value, and become the new benchmark in the high-end market of China earthmoving machinery industry.



1943

TOP 3

TOP 3 Global Construction Industry

2000

More than 2000 Service Terminals

8500

More than 8500 Valid Patents

40

More than \$4 Billion Annual Exports