

GR3505T Pro



GR3505T PRO Motor Grader

The GR3505T Pro motor grader is a construction machine used in open pit mines for haul road shaping and leveling operations. It is characterized by strong power, efficient operation and comfortable and intelligent control performance. The machine is mainly used for heavy-duty soil and rock leveling in open pit mines, but also for snow removal, material paving and side trenching in open pit mines. The machine has sufficient power, reliable and durable, and high operation comfort, which is the ideal leveling equipment in the maintenance and repair of the road surface of open pit mine.



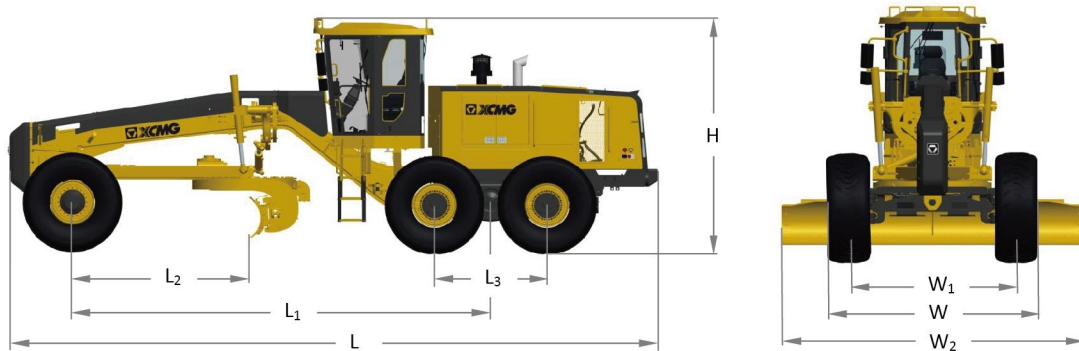
Performance and characteristics

- Powerful and efficient construction performance, optimized weight and power matching, providing strong traction output, which can easily cope with sudden and short time load surges.
- Comfortable and intelligent control experience, equipped with electric double-lever control and intelligent panel control, which greatly reduces the driver's control intensity.
- Durable structure design, equipped with mining heavy-duty drive rear axle, integral angle sensor, high-strength slewing bearing and overload protection worm gear box, to enhance the durability of the machine.
- Convenient and centralized maintenance, convenient and centralized daily filter cartridge and oil replacement, the whole vehicle is equipped with intelligent monitoring and fault diagnosis system.
- Solid and sufficient safety guarantee, equipped with wet brake, hydraulic locking, ground break switch, double emergency stop control, reversing image and other systems to ensure the safe use of equipment.

Main dimensions

Unit: mm

Model	L	L1	L2	L3	H	W	W1	W2
GR3505T Pro	11320	7300	3076	1960	4100	3400	2700	4877



Main specifications

Item	Content	Unit	GR3505T Pro	
Basic parameter	Engine model		QSM11	
	Rated power/speed	kW/rpm	261/2100	
	Machine dimension(standard)	mm	11320x3400x4100	
	Machine weight(standard)	kg	32000	
	Tire specification		23.5R25	
	Ground clearance (Front axle)	mm	625	
	Wheel track	mm	2700	
	Axle distance between front and rear	mm	7300	
	Wheel base between middle and rear	mm	1960	
Performance parameters	Drive speed, forward	km/h	5/8.5/13/20/30/45	
	Drive speed, reverse	km/h	5/13/30	
	Traction force f=0.75	kN	≥160	
	Maximum gradeability	%	≥30	
	Tire inflation pressure	kPa	475	
	Work system pressure	MPa	25	
	Transmission box pressure	Mpa	1.6±0.2	
	Maximum steering angle, front wheel	°	±48	
	Allowable tilt angle, front wheel	°	±17	
Working parameters	Maximum oscillation, front axle	°	±15	
	Maximum oscillation, balance box	°	Front 15 rear 15	
	Maximum steering angle, frame	°	±23	
	Minimum turning radius	m	9.6	
	Blade	Maximum lift above ground	mm	470
		Maximum cutting depth	mm	660
		Maximum tilt angle	°	90
		Cutting angle	°	Front 40 rear 5
		Swivel angle	°	360
Length × Height		mm	4877×686	
Capacities	Coolant	L	50	
	Fuel tank	L	550	
	Engine	L	37	
	Transmission box	L	38	
	Balance box	L	93 each	
	Drive axle	L	106	
	Hydraulic oil	L	210	