

SOLID TO SUCCEED

XC7-SR07 SKID-STEER LOADER



 **XCMG EARTHMOVING MACHINERY
BUSINESS DIVISION**

CUSTOMER SERVICE
HOTLINE (IN CHINA): **400-110-9999**

ADDRESS: NO. 99, KUNPENG NORTH ROAD, XUZHOU ECONOMIC
DEVELOPMENT ZONE, JIANGSU PROVINCE, CHINA

ZIP CODE: 221004

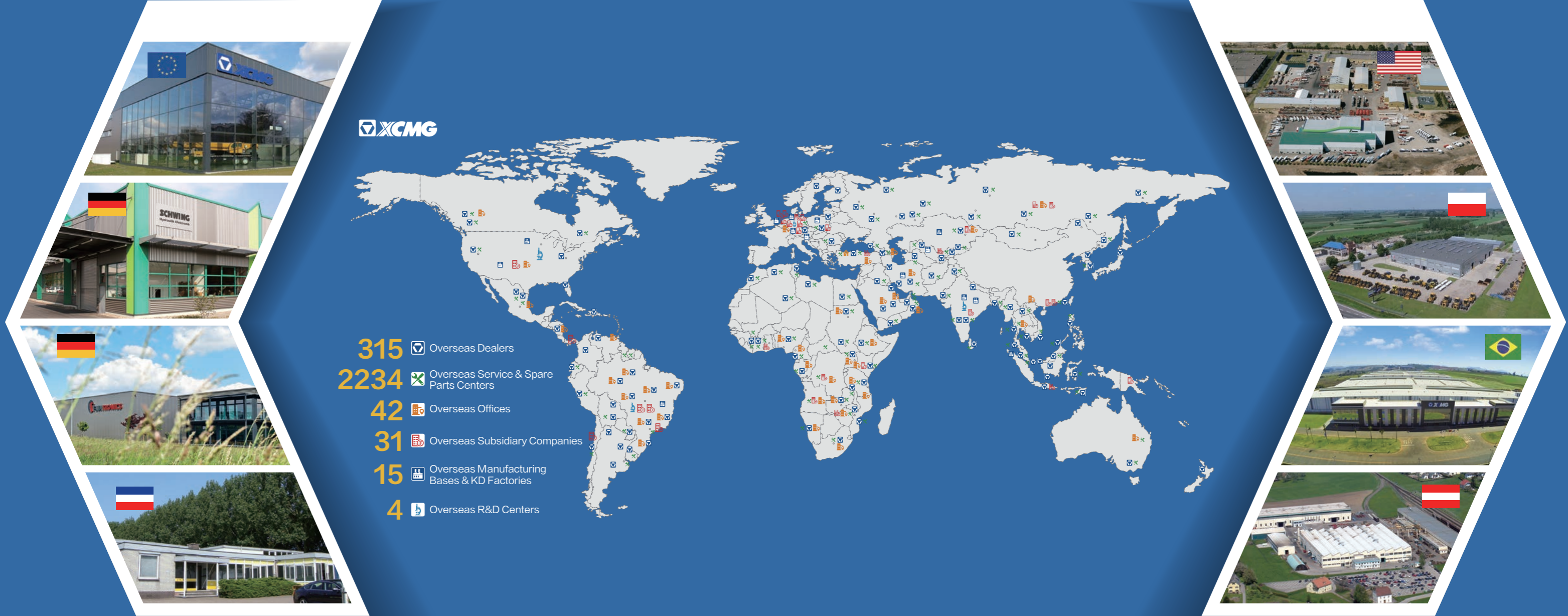
TEL: 0516 87938888

EMAIL: sales@xcmg.com

SITE: <http://www.xcmg.com>

2023-03

1. Scan the QR code to follow "XCMG Loading Machinery"
2. Click the "Loader King" in the lower left corner to obtain
more product details after registration



About XCMG

As a 100 billion-level leading company renowned for the largest scale, the most advanced technology, the largest export volume, and the highest competitiveness and influence in China's construction machinery industry, Xuzhou Construction Machinery Group Co., Ltd. (XCMG) not only has dominated the Chinese market for decades, but also is committed to expanding its worldwide presence as the third largest supplier in this field and 395th of Global 500.

The product portfolio offered by XCMG covers 16 categories such as hoisting machinery, excavation machinery, concrete machinery, mining machinery, earthmoving machinery, and road construction machinery, as well as three key components, i.e., hydraulic systems, transmission systems and electrical control systems. In these areas, our hoisting machinery ranks first in the world, and our complete solutions for road construction and maintenance machinery, piling machinery and concrete machinery also take the leading position in global rankings.

XCMG has been granted more than 8,000 patents in total, including more than 1,900 invention patents and more than 130 international PCT patents.

We have established our own R&D centers, manufacturing plants or KD factories in more than 10 countries, e.g., Germany, USA, Brazil and India, and have acquired 3 European companies including Schwing from Germany.

The manufacturing factory in Brazilian, which is built on a barren land with an investment of USD 350 million, has become a successful model of China-Brazil economic cooperation. At present, our products are exported to 187 countries and regions, covering 97% of the countries along the "Belt and Road". XCMG takes the largest share of the business exported to 35 countries, with the annual export volume and overseas revenue remaining in first place and outperforming all other competitors in China.





Description & Features

- ▼ XC7-SR07 is an innovative skid steer loader developed by XCMG based on the international R&D platform according to the needs of domestic market. With upgraded technology and improved performance, it can be used for a variety of applications such as road construction/maintenance/cleaning, buildings construction engineering, forestry, garden landscape, agriculture, slope paving/leveling, and lifting/handling.
- ▼ XC7-SR07 features excellent safety, reliability, advanced technology, efficiency and other advantages. The radial lifting mechanism independently designed by XCMG features higher lifting capacity and one-way leveling function, which is able to ensure higher operation efficiency. The panoramic cab is configured with FOPS and ROPS devices as standard to ensure higher safety and reliability. The spaceship-style cockpit features the electronic real-time monitoring system with intelligent advanced screen, which combines the design and performance perfectly, and improves the level of intelligence and comfort significantly.

Description & Features

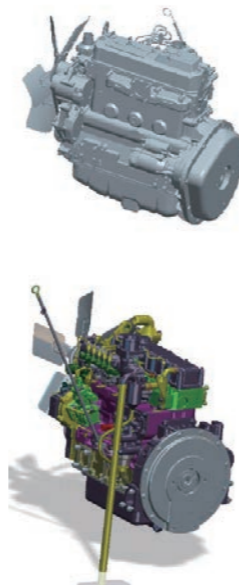


- ▼ Drivetrain system: well-known brand engine with excellent power performance and environmental-friendly emission certified according to China III requirements; maintenance-free sprocket box designed with long wheelbase (2,300mm) and adapted to various ultra-heavy-duty operating conditions, featuring incomparable stability.
- ▼ Hydraulic system: key components from world-class brands, supporting boom lifting and leveling operations, as well as stepless speed regulation and intelligent control of coupled tools. Locking, centralized pressure measurement and parking brake functions; ensuring fast and efficient transfer with a driving speed up to 14km/h, surpassing competitors in the industry.
- ▼ Operating unit: radial lifting mechanism independently designed by XCMG, featuring higher lifting capacity, universal quick couplings enabling easy change of various operating units to meet different operating requirements.
- ▼ Electronic control system: electro-hydraulic control, higher safety with electric control interlock (interlock override).

Product reliability:



- Warm-up idle speed: able to reach the operating temperature more quickly by increasing the engine idle speed slightly after the vehicle is started in the cold state.
- Engine monitoring and alarm: monitoring the coolant temperature, engine oil pressure, hydraulic oil temperature, etc.; producing an alarm and displaying the fault code in case the measured data exceeds the set value.
- Overload protection: able to limit the output torque and speed of the engine in case of overload for a prolonged duration, in order to prevent overheating and damage, minimize wear and avoid further failures.
- The welded sprocket box is integrated with the frame, featuring high structural strength, easy disassembly/assembly, and zero maintenance.
- High-strength roller bearings can withstand large radial and axial loads, and guarantee better performance under vibration and impact load conditions.



Comfort design:



- The super-large luxurious cab is integrated with XCMG family-style design and C-type appearance, featuring spacious room and wide field of view.
- The air conditioner features excellent performance due to optimized internal air duct, balanced flow field and stable temperature control, and is configured with eight air outlets and supports glass defrosting and foot warming functions.
- The machine is equipped with hydraulic pilot + hydraulic control & multi-functional electric control to improve operating comfort.
- The mechanical suspension seat, featuring anti-vibration performance according to the EM9 standard, can be adjusted at different angles according to the comfort of the human body, and is configured with a 2" wide seat belt as standard.



Maintainability:

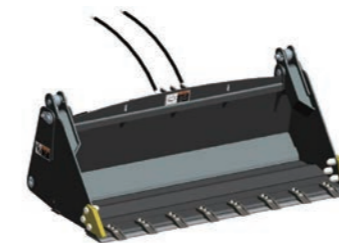


- The cab can be tipped over at a large angle, and the rear and upper hoods can be rotated to open. The quickly-detachable side panels and foot compartment enable convenient repair and maintenance of vehicle components.
- Cockpit maintainability: All electrical components (battery, fuses and switches), filter and oil drain port are easily accessible.
- The combined pressure testing connector can quickly test the pressure of the hydraulic system, and efficiently analyze and eliminate system faults.



Snow Thrower - Technical Data

Tool Type	84 inch snow thrower
Overall Length (mm)	1120
Overall Width (mm)	2200
Overall Height (optional for low throw) (mm)	1695
Overall Height (optional for high throw) (mm)	3458
Transport Height (mm)	1593 (LT)/2140 (HT)
Operating weight (kg)	529 (LT)/578 (HT)
Operation mode	Electro-hydraulic control
Rotation Angle (°)	270 (LT)/200 (HT)
Max Loading Height (optional for high throw) (m)	3.3
Max Throw Range (m)	12
Hydraulic flow (L/min)	120-150
Operating Pressure (Mpa)	21
Compatible Machine (High flow)	Skid steer loader



Four-in-one Bucket - Technical Data

Overall length (mm)	951
Overall width (mm)	1890
Height (mm)	715
Opening (mm)	880
Weight (incl. accessories) (kg)	418
Bucket capacity for flat/stack loading (m³)	0.46/0.58
Operating flow (l/min)	20-30
Max allowable pressure (mpa)	21
Optional accessories	Main bucket teeth, auxiliary blades, side teeth
Compatible machine	Skid steer loader



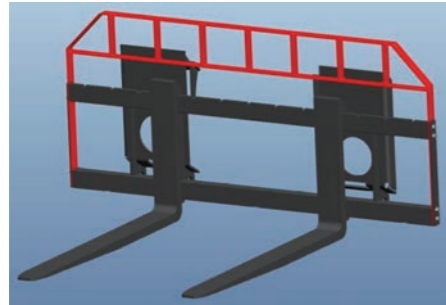
Dual-Arm Excavator - Technical Data

Max digging depth (mm)	2430
Maximum lift height (mm)	2864
Max Horizontal Span (mm)	3269
Max Dumping Height (mm)	1495
Ground Clearance (mm)	215
Width (mm)	1176
Horizontal rotation angle (°)	140
Bucket rotation angle (°)	186°
Flow (L/min)	20-60
Operating pressure (MPa)	16-21
Bucket	0.03m³, 0.04m³, 0.05m³
Compatible machine	Skid steer loader



Auger Bit - Technical Data

Bit model	3000MAX
Dimensions (mm)	2032×1130×464
Bit height (mm)	665
Bit diameter (mm)	244
Bit weight (kg)	71
Drilling diameter (mm)	400
Oil flow range (ipm)	27-75
Oil pressure range (bar)	80-240
Torque range (nm)	959-2877
Speed range (rpm)	36-100
Optional bit (m)	S4 1.2
Compatible machine	All series machines



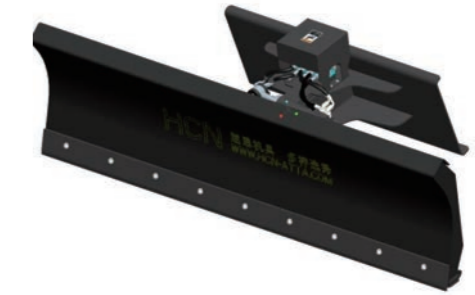
Fork - Technical Data	
Overall width (mm)	1595
Overall height (mm)	770
Overall length (mm)	1223
Fork length (mm)	1105 (customizable)
Fork thickness (mm)	35
Fork width (mm)	100
Fork pitch adjustment (mm)	220~1540
Weight (kg)	150
Max load (t)	1.5



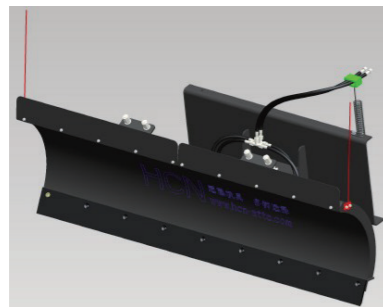
Planer - Technical Data		
Tool type	18 inch planer	24 inch planer
Overall length (mm)	1376	1376
Overall width (mm)	1727	1727
Height (mm)	935	935
Planing width (mm)	450	600
Planing depth (mm)	150	150
Max side shift distance (mm)	600	600
Operating flow (L/min)	130-140	130-140
Max allowable pressure (MPa)	21	21
Number of planing cutters & holders	39	48
Operating voltage (V) (optional)	DC12/24	DC12/24
Weight (incl. accessories) (kg)	925	985



Bevel Sweeper - Technical Data			
Specification	Unit	72" Bevel sweeper	84" Bevel sweeper
Working width	mm	≥1800	≥2100
Dimensions	mm	1650×2163×870	1650×2500×870
Operating pressure	MPa	16-21	16-21
Operating Flow	L/min	80-120	80-120
Rotation angle	°	±30	±30
Weight	kg	≥545	≥575
Brush	Diameter	mm	φ800
	Material		Polypropylene filament
	Number of brushes	pcs	36-37
			Polypropylene filament
			42-43



Bulldozer Blade - Technical Data	
Tool type	72 inch bulldozer blade
Overall width (mm)	1830
Width at 30° turning angle (mm)	1519
Height (mm)	700
Overall length (mm)	965
Max rotation angle (°)	±30
Max swinging angle (°)	±10
Weight (incl. accessories) (kg)	556
Operating flow (L/min)	20-30
Operating voltage (V) (optional)	DC12/24
Max allowable pressure (MPa)	21



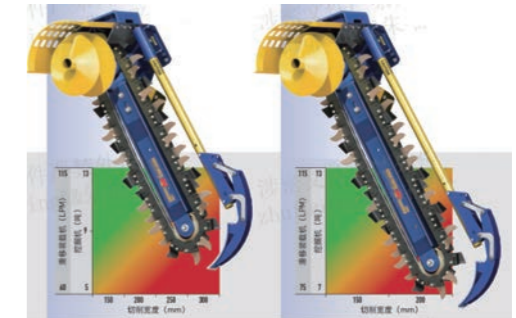
Snow Pusher - Technical Data		
tool type	72 inch snow pusher	84 inch snow pusher
Overall width (mm)	1830	2130
Overall length (mm)	1010	1010
Height (mm)	978	978
Transport height (mm)	635	635
Operating width at 30° (mm)	1580	1845
Rotation angle (hydraulic control) (°)	±30	±30
Weight (incl. accessories) (kg)	295	312
Obstacle avoidance height (mm)	≤80	≤80
Max allowable pressure (Mpa)	21	21



Hammer - Technical Data	
Length (mm)	1200
Width (mm)	809
Height (mm)	1692
Drill rod diameter (mm)	φ70
Operating flow (L/min)	30-45
Operating pressure (bar)	110-160
Impact frequency (bpm)	500-800
Impact energy (J)	≥900
Weight (kg)	341

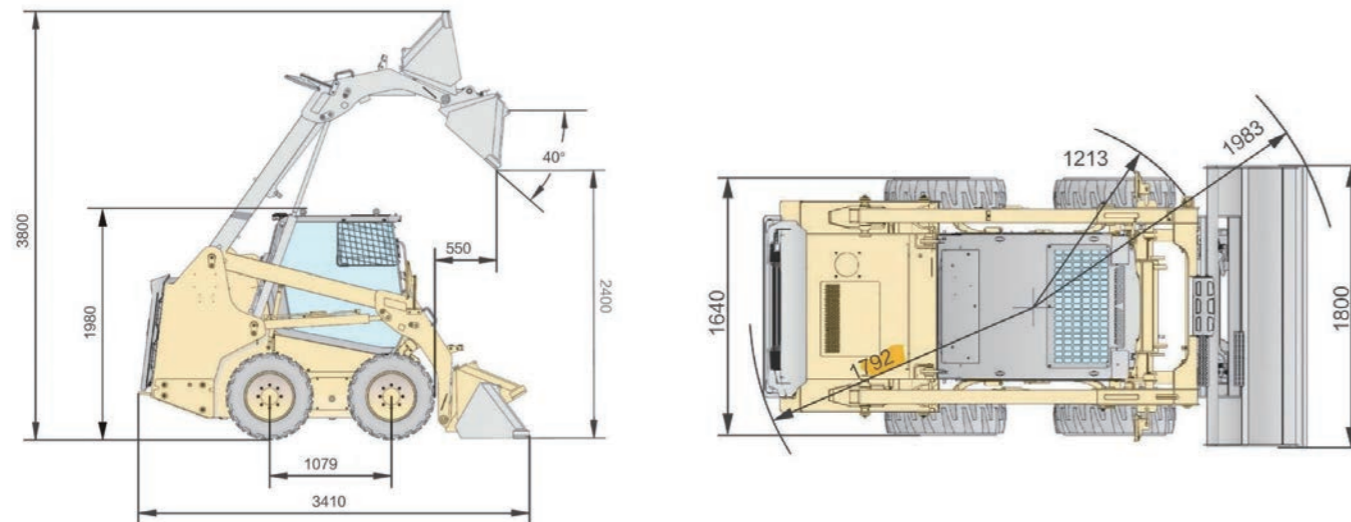


Enclosed Sweeper - Technical Data	
Length (mm)	1450
Width (mm)	2117
Height (mm)	680
Brush diameter (mm)	660
Number of brushes (pcs)	36
Motor displacement (ml/r)	≥300
Weight (kg)	480
Operating pressure (MPa)	14-24
Operating flow (L/min)	60-80
Collector capacity (m³)	0.46
Sweeping width (mm)	1830



XHD Series Trencher - Technical Data		
Tool type	1.2m trencher	1.5m trencher
Unit length (mm)	2262	2562
Unit width (mm)	1018	1018
Unit height (mm)	808	808
Oil pressure range (bar)	180-240	180-240
Oil flow range (lpm)	70-115	80-135
Cutting width (mm)	150	200
Cutting depth range (mm)	800-1200	1000-1500
Operating voltage (v)	DC12	DC12

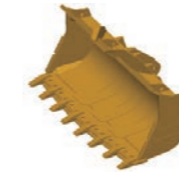
Overall dimensions:



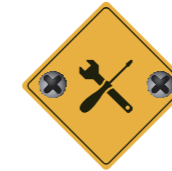
Specifications

Item	Parameter	Unit
Rated load	890	kg
Bucket capacity	0.4	m ³
Operating mass	2950	kg
Rated power of the engine	36.8 (YUCHAI) / 35.5 (YANMAR)	kW
Rated speed of the engine	2400	rpm
Dumping height	2400	mm
Dumping range	550	mm
Wheel base	1079	mm
Wheel track	1370	mm
Max breakout force	24	kN
Max tractive force	25	kN
Total cycle time	≤10	S
Max driving speed	14	km/h
Overall dimensions (L × W × H)	3410*1800*1960	mm

System category	Specification	XC7-SR07
Engine	Brand & specification	YCF3050-T302 (YUCHAI)
	Type	Inline four-cylinder, naturally aspirated, high pressure common rail
	Displacement	2.982L
	Max torque	190/1400~1700 Nm/rpm
	Emission standard	Non-road China III
Engine	Brand & specification	4TNV94L-BXPHZ (YANMAR)
	Type	Inline four-cylinder, naturally aspirated, high pressure common rail
	Displacement	3.054
	Max torque	191.5~208.5/— Nm/rpm
	Emission standard	Non-road China III
Cab	ROPS	according to ISO 3471:2008
	FOPS	according to ISO 3449:2005 Level I
Tyre	Specification	10-16.5
Hydraulic system	Standard auxiliary flow	79 L/min
	Hydraulic pressure	210 bar
Air conditioning System	Type	Cooling and heating



XCMG approved attachments



Genuine parts



Financial solutions



Maintenance contract



Telematics

Professional Integrated Complete Solutions

XCMG has built a strong reputation based on the quality, reliability and durability of its construction machinery. What's more, XCMG has gradually established a service network to constantly provide its local integrated and highly efficient complete solutions for all customers.



Full Range of Services Ready for you

In order to respond to your needs as fast as possible, XCMG's experts are on their way to your job site from one of our facilities near you. Full range of services are available in order to reduce your total cost of ownership and increase your revenue.

XCMG Global Spare Parts System



- The technology of XCMG backhoe loaders is subject to constant improvement and upgrading. In case the specifications or detailed appearance contained in this brochure differ from actual products, the latter shall prevail;
- XCMG reserves the right of final interpretation for the above. Our products may be modified without prior notice to users.