

SOLID TO SUCCEED

XC7-SR08 SKID-STEER LOADER



 **XCMG EARTHMOVING MACHINERY
BUSINESS DIVISION**

CUSTOMER SERVICE
HOTLINE (IN CHINA): **400-110-9999**

ADDRESS: NO. 99, KUNPENG NORTH ROAD, XUZHOU ECONOMIC
DEVELOPMENT ZONE, JIANGSU PROVINCE, CHINA

ZIP CODE: 221004

TEL: 0516 87938888

EMAIL: sales@xcmg.com

SITE: <http://www.xcmg.com>

2023-03



1. Scan the QR code to follow "XCMG Loading Machinery"
2. Click the "Loader King" in the lower left corner to obtain
more product details after registration



About XCMG

As a 100 billion-level leading company renowned for the largest scale, the most advanced technology, the largest export volume, and the highest competitiveness and influence in China's construction machinery industry, Xuzhou Construction Machinery Group Co., Ltd. (XCMG) not only has dominated the Chinese market for decades, but also is committed to expanding its worldwide presence as the third largest supplier in this field and 395th of Global 500.

The product portfolio offered by XCMG covers 16 categories such as hoisting machinery, excavation machinery, concrete machinery, mining machinery, earthmoving machinery, and road construction machinery, as well as three key components, i.e., hydraulic systems, transmission systems and electrical control systems. In these areas, our hoisting machinery ranks first in the world, and our complete solutions for road construction and maintenance machinery, piling machinery and concrete machinery also take the leading position in global rankings.

XCMG has been granted more than 8,000 patents in total, including more than 1,900 invention patents and more than 130 international PCT patents.

We have established our own R&D centers, manufacturing plants or KD factories in more than 10 countries, e.g., Germany, USA, Brazil and India, and have acquired 3 European companies including Schwing from Germany.

The manufacturing factory in Brazilian, which is built on a barren land with an investment of USD 350 million, has become a successful model of China-Brazil economic cooperation. At present, our products are exported to 187 countries and regions, covering 97% of the countries along the "Belt and Road". XCMG takes the largest share of the business exported to 35 countries, with the annual export volume and overseas revenue remaining in first place and outperforming all other competitors in China.



Description & Features

- ▼ XC7-SR08 is an innovative skid steer loader developed by XCMG based on the international R&D platform according to the needs of domestic market. With upgraded technology and improved performance, it can be used for a variety of applications such as road construction/maintenance/cleaning, buildings construction engineering, forestry, garden landscape, agriculture, slope paving/leveling, and lifting/handling.
- ▼ XC7-SR08 features excellent safety, reliability, advanced technology, efficiency and other advantages. The radial lifting mechanism independently designed by XCMG features higher lifting capacity and one-way leveling function, which is able to ensure higher operation efficiency. The panoramic cab is configured with FOPS and ROPS devices as standard to ensure higher safety and reliability. The spaceship-style cockpit features the electronic real-time monitoring system with intelligent advanced screen, which combines the design and performance perfectly, and improves the level of intelligence and comfort significantly.

Description & Features

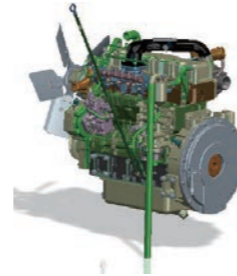
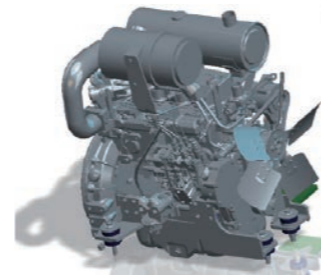


- ▼ Drivetrain system: well-known brand engine with excellent power performance and environmental-friendly emission certified according to China III requirements; maintenance-free sprocket box designed with long wheelbase and adapted to various ultra-heavy-duty operating conditions, featuring incomparable stability.
- ▼ Hydraulic system: key components from world-class brands, supporting boom lifting and leveling operations, as well as stepless speed regulation and intelligent control of coupled tools. Locking, centralized pressure measurement and parking brake functions; ensuring fast and efficient transfer with a driving speed up to 14km/h, surpassing competitors in the industry.
- ▼ Operating unit: Radial lifting mechanism independently designed by XCMG, featuring higher lifting capacity, universal quick couplings enabling easy change of various operating units to meet different operating requirements.
- ▼ Electric control system: electro-hydraulic control, higher safety with electric control interlock (interlock override).

Product reliability:



- Warm-up idle speed: able to reach the operating temperature more quickly by increasing the engine idle speed slightly after the vehicle is started in the cold state.
- Engine monitoring and alarm: monitoring the coolant temperature, engine oil pressure, hydraulic oil temperature, etc.; producing an alarm and displaying the fault code in case the measured data exceeds the set value.
- Overload protection: able to limit the output torque and speed of the engine in case of overload for a prolonged duration, in order to prevent overheating and damage, minimize wear and avoid further failures.
- The welded sprocket box is integrated with the frame, featuring high structural strength, easy disassembly/assembly, and zero maintenance.
- High-strength roller bearings can withstand large radial and axial loads, and guarantee better performance under vibration and impact load conditions.



Comfort design:



- The super-large luxurious cab is integrated with XCMG family-style design and C-type appearance, featuring spacious room and wide field of view.
- The air conditioner features excellent performance due to optimized internal air duct, balanced flow field and stable temperature control, and is configured with eight air outlets and supports glass defrosting and foot warming functions.
- The machine is equipped with hydraulic pilot + hydraulic control & multi-functional electric control to improve operating comfort.
- The mechanical suspension seat, featuring anti-vibration performance according to the EM9 standard, can be adjusted at different angles according to the comfort of the human body, and is configured with a 2" wide seat belt as standard.



Maintainability:

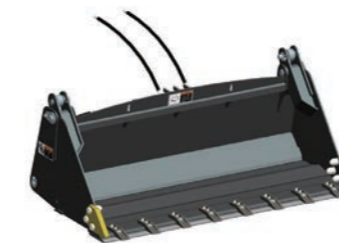


- The cab can be tipped over at a large angle, and the rear and upper hoods can be rotated to open. The quickly-detachable side panels and foot compartment enable convenient repair and maintenance of vehicle components.
- Cockpit maintainability: All electrical components (battery, fuses and switches), filter and oil drain port are easily accessible.
- The combined pressure testing connector can quickly test the pressure of the hydraulic system, and efficiently analyze and eliminate system faults.



Snow Thrower - Technical Data

| | |
|--|---------------------------|
| Tool Type | 84 inch snow thrower |
| Overall Length (mm) | 1120 |
| Overall Width (mm) | 2200 |
| Overall Height (optional for low throw) (mm) | 1695 |
| Overall Height (optional for high throw) (mm) | 3458 |
| Transport Height (mm) | 1593 (LT)/2140 (HT) |
| Operating weight (kg) | 529 (LT)/578 (HT) |
| Operation mode | Electro-hydraulic control |
| Rotation Angle (°) | 270 (LT)/200 (HT) |
| Max Loading Height (optional for high throw) (m) | 3.3 |
| Max Throw Range (m) | 12 |
| Hydraulic flow (L/min) | 120-150 |
| Operating Pressure (Mpa) | 21 |
| Compatible Machine (High flow) | Skid steer loader |



Four-in-one Bucket - Technical Data

| | |
|---|---|
| Overall length (mm) | 951 |
| Overall width (mm) | 1890 |
| Height (mm) | 715 |
| Opening (mm) | 880 |
| Weight (incl. accessories) (kg) | 418 |
| Bucket capacity for flat/stack loading (m³) | 0.46/0.58 |
| Operating flow (l/min) | 20-30 |
| Max allowable pressure (mpa) | 21 |
| Optional accessories | Main bucket teeth, auxiliary blades, side teeth |
| Compatible machine | Skid steer loader |



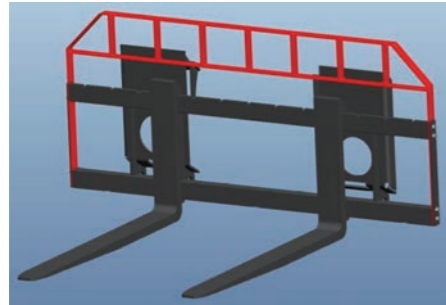
Dual-Arm Excavator - Technical Data

| | |
|-------------------------------|------------------------|
| Max digging depth (mm) | 2430 |
| Maximum lift height (mm) | 2864 |
| Max Horizontal Span (mm) | 3269 |
| Max Dumping Height (mm) | 1495 |
| Ground Clearance (mm) | 215 |
| Width (mm) | 1176 |
| Horizontal rotation angle (°) | 140 |
| Bucket rotation angle (°) | 186° |
| Flow (L/min) | 20-60 |
| Operating pressure (MPa) | 16-21 |
| Bucket | 0.03m³, 0.04m³, 0.05m³ |
| Compatible machine | Skid steer loader |



Auger Bit - Technical Data

| | |
|--------------------------|---------------------|
| Bit model | 3000MAX |
| Dimensions (mm) | 2032×1130×464 |
| Bit height (mm) | 665 |
| Bit diameter (mm) | 244 |
| Bit weight (kg) | 71 |
| Drilling diameter (mm) | 400 |
| Oil flow range (ipm) | 27-75 |
| Oil pressure range (bar) | 80-240 |
| Torque range (nm) | 959-2877 |
| Speed range (rpm) | 36-100 |
| Optional bit (m) | S4 1.2 |
| Compatible machine | All series machines |



| Fork - Technical Data | |
|----------------------------|---------------------|
| Overall width (mm) | 1595 |
| Overall height (mm) | 770 |
| Overall length (mm) | 1223 |
| Fork length (mm) | 1105 (customizable) |
| Fork thickness (mm) | 35 |
| Fork width (mm) | 100 |
| Fork pitch adjustment (mm) | 220~1540 |
| Weight (kg) | 150 |
| Max load (t) | 1.5 |



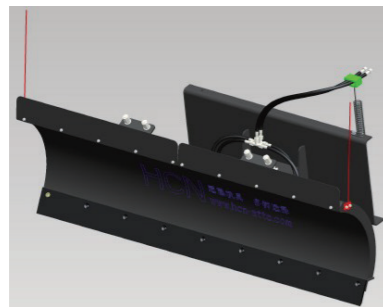
| Planer - Technical Data | | |
|-------------------------------------|----------------|----------------|
| Tool type | 18 inch planer | 24 inch planer |
| Overall length (mm) | 1376 | 1376 |
| Overall width (mm) | 1727 | 1727 |
| Height (mm) | 935 | 935 |
| Planing width (mm) | 450 | 600 |
| Planing depth (mm) | 150 | 150 |
| Max side shift distance (mm) | 600 | 600 |
| Operating flow (L/min) | 130-140 | 130-140 |
| Max allowable pressure (MPa) | 21 | 21 |
| Number of planing cutters & holders | 39 | 48 |
| Operating voltage (V) (optional) | DC12/24 | DC12/24 |
| Weight (incl. accessories) (kg) | 925 | 985 |



| Bevel Sweeper - Technical Data | | | |
|--------------------------------|-------------------|-------------------|------------------------|
| Specification | Unit | 72" Bevel sweeper | 84" Bevel sweeper |
| Working width | mm | ≥1800 | ≥2100 |
| Dimensions | mm | 1650×2163×870 | 1650×2500×870 |
| Operating pressure | MPa | 16-21 | 16-21 |
| Operating Flow | L/min | 80-120 | 80-120 |
| Rotation angle | ° | ±30 | ±30 |
| Weight | kg | ≥545 | ≥575 |
| Brush | Diameter | mm | φ800 |
| | Material | | Polypropylene filament |
| | Number of brushes | pcs | 36-37 |
| | | | Polypropylene filament |
| | | | 42-43 |



| Bulldozer Blade - Technical Data | |
|----------------------------------|-------------------------|
| Tool type | 72 inch bulldozer blade |
| Overall width (mm) | 1830 |
| Width at 30° turning angle (mm) | 1519 |
| Height (mm) | 700 |
| Overall length (mm) | 965 |
| Max rotation angle (°) | ±30 |
| Max swinging angle (°) | ±10 |
| Weight (incl. accessories) (kg) | 556 |
| Operating flow (L/min) | 20-30 |
| Operating voltage (V) (optional) | DC12/24 |
| Max allowable pressure (MPa) | 21 |



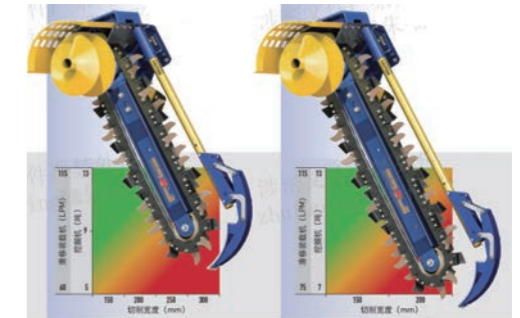
| Snow Pusher - Technical Data | | |
|--|---------------------|---------------------|
| tool type | 72 inch snow pusher | 84 inch snow pusher |
| Overall width (mm) | 1830 | 2130 |
| Overall length (mm) | 1010 | 1010 |
| Height (mm) | 978 | 978 |
| Transport height (mm) | 635 | 635 |
| Operating width at 30° (mm) | 1580 | 1845 |
| Rotation angle (hydraulic control) (°) | ±30 | ±30 |
| Weight (incl. accessories) (kg) | 295 | 312 |
| Obstacle avoidance height (mm) | ≤80 | ≤80 |
| Max allowable pressure (Mpa) | 21 | 21 |



| Hammer - Technical Data | |
|--------------------------|---------|
| Length (mm) | 1200 |
| Width (mm) | 809 |
| Height (mm) | 1692 |
| Drill rod diameter (mm) | φ70 |
| Operating flow (L/min) | 30-45 |
| Operating pressure (bar) | 110-160 |
| Impact frequency (bpm) | 500-800 |
| Impact energy (J) | ≥900 |
| Weight (kg) | 341 |

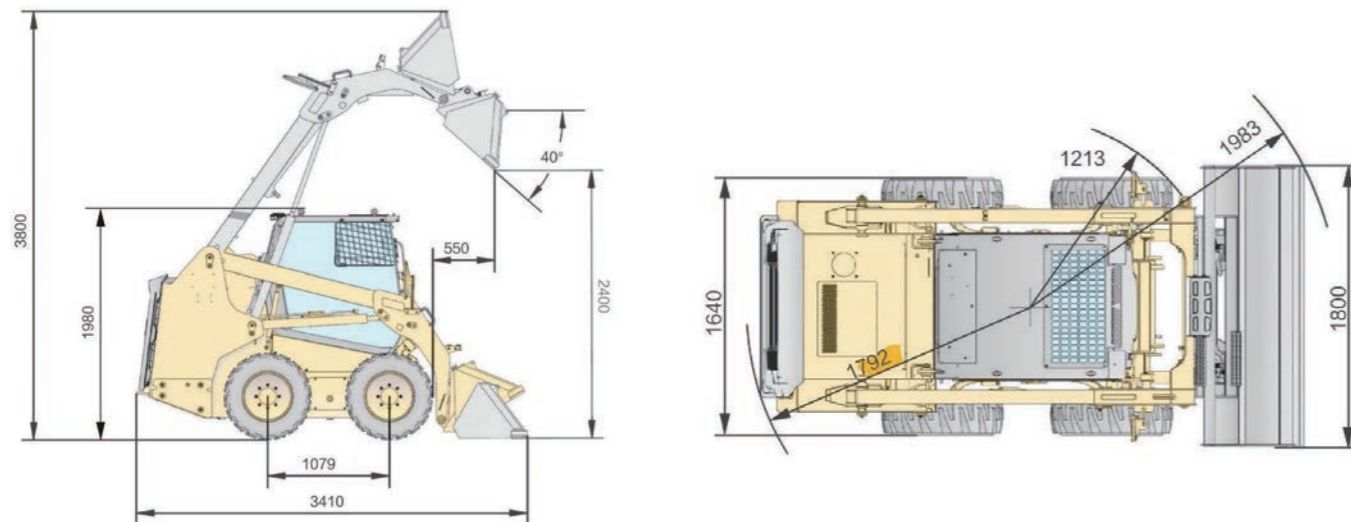


| Enclosed Sweeper - Technical Data | |
|-----------------------------------|-------|
| Length (mm) | 1450 |
| Width (mm) | 2117 |
| Height (mm) | 680 |
| Brush diameter (mm) | 660 |
| Number of brushes (pcs) | 36 |
| Motor displacement (ml/r) | ≥300 |
| Weight (kg) | 480 |
| Operating pressure (MPa) | 14-24 |
| Operating flow (L/min) | 60-80 |
| Collector capacity (m³) | 0.46 |
| Sweeping width (mm) | 1830 |



| XHD Series Trencher - Technical Data | | |
|--------------------------------------|---------------|---------------|
| Tool type | 1.2m trencher | 1.5m trencher |
| Unit length (mm) | 2262 | 2562 |
| Unit width (mm) | 1018 | 1018 |
| Unit height (mm) | 808 | 808 |
| Oil pressure range (bar) | 180-240 | 180-240 |
| Oil flow range (lpm) | 70-115 | 80-135 |
| Cutting width (mm) | 150 | 200 |
| Cutting depth range (mm) | 800-1200 | 1000-1500 |
| Operating voltage (v) | DC12 | DC12 |

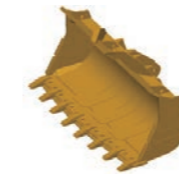
Overall dimensions



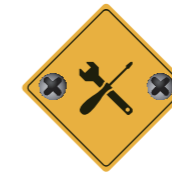
Specifications

| Item | Parameter | Unit |
|--------------------------------|-------------------------------|----------------|
| Rated load | 955 | kg |
| Bucket capacity | 0.4 | m ³ |
| Operating mass | 3210 | kg |
| Rated power of the engine | 55.8 (YUCHAI) / 50.2 (YANMAR) | kW |
| Rated speed of the engine | 2400 | rpm |
| Dumping height | 2400 | mm |
| Dumping range | 550 | mm |
| Wheel base | 1079 | mm |
| Wheel track | 1370 | mm |
| Max breakout force | 24 | kN |
| Max tractive force | 25 | kN |
| Total cycle time | ≤10 | S |
| Max driving speed | 14 | km/h |
| Overall dimensions (L × W × H) | 3410*1800*1960 | mm |

| System category | Specification | XC7-SR08 |
|-------------------------|-------------------------|--|
| Engine | Brand & specification | YCF3075-T300 (YUCHAI) |
| | Type | Inline four-cylinder, turbocharged, high-pressure common rail |
| | Displacement | 2.982L |
| | Max torque | 255/1400~1800 Nm/rpm |
| | Emission standard | Non-road China III |
| Engine | Brand & specification | 4TNV98-ZCPTYBC (YANMAR) |
| | Type | Inline four-cylinder, naturally aspirated, high pressure common rail |
| | Displacement | 3.319L |
| | Max torque | 218.9~238.8/1550 Nm/rpm |
| | Emission standard | Non-road China III |
| Cab | ROPS | according to ISO 3471:2008 |
| | FOPS | according to ISO 3449:2005 Level I |
| Tyre | Specification | 10-16.5 |
| Hydraulic system | Standard auxiliary flow | 79 L/min |
| | High auxiliary flow | 125 L/min |
| | Hydraulic pressure | 210 bar |
| Air conditioning System | Type | Cooling and heating |



XCMG approved attachments



Genuine parts



Financial solutions



Maintenance contract



Telematics

Professional Integrated Complete Solutions

XCMG has built a strong reputation based on the quality, reliability and durability of its construction machinery. What's more, XCMG has gradually established a service network to constantly provide its local integrated and highly efficient complete solutions for all customers.

Full Range of Services Ready for you

In order to respond to your needs as fast as possible, XCMG's experts are on their way to your job site from one of our facilities near you. Full range of services are available in order to reduce your total cost of ownership and increase your revenue.



XCMG Global Spare Parts System



- The technology of XCMG backhoe loaders is subject to constant improvement and upgrading. In case the specifications or detailed appearance contained in this brochure differ from actual products, the latter shall prevail;
- XCMG reserves the right of final interpretation for the above. Our products may be modified without prior notice to users.