



Hydraulic Excavators **XE90U**



XCMG MINING EQUIPMENT AUSTRALIA PTY LTD
Add:31-33 Westpool drive, Hallam, Vic,3803,Australia
Phone: +61 0411 591 394
Email: royrossini@xcmg.com
xcmgaustralia@xcmg.com

XUZHOU CONSTRUCTION MACHINERY GROUP IMP.& EXP.CO., LTD
Add:NO.1,Tuolanshan Road, Xuzhou Economic Developing Zone,Jiangsu,
China 221004
Tel: +86 (0) 516 8773 9228
Fax: +86 (0) 516 8773 9230
E-mail: royrossini@xcmg.com xcmgaustralia@xcmg.com

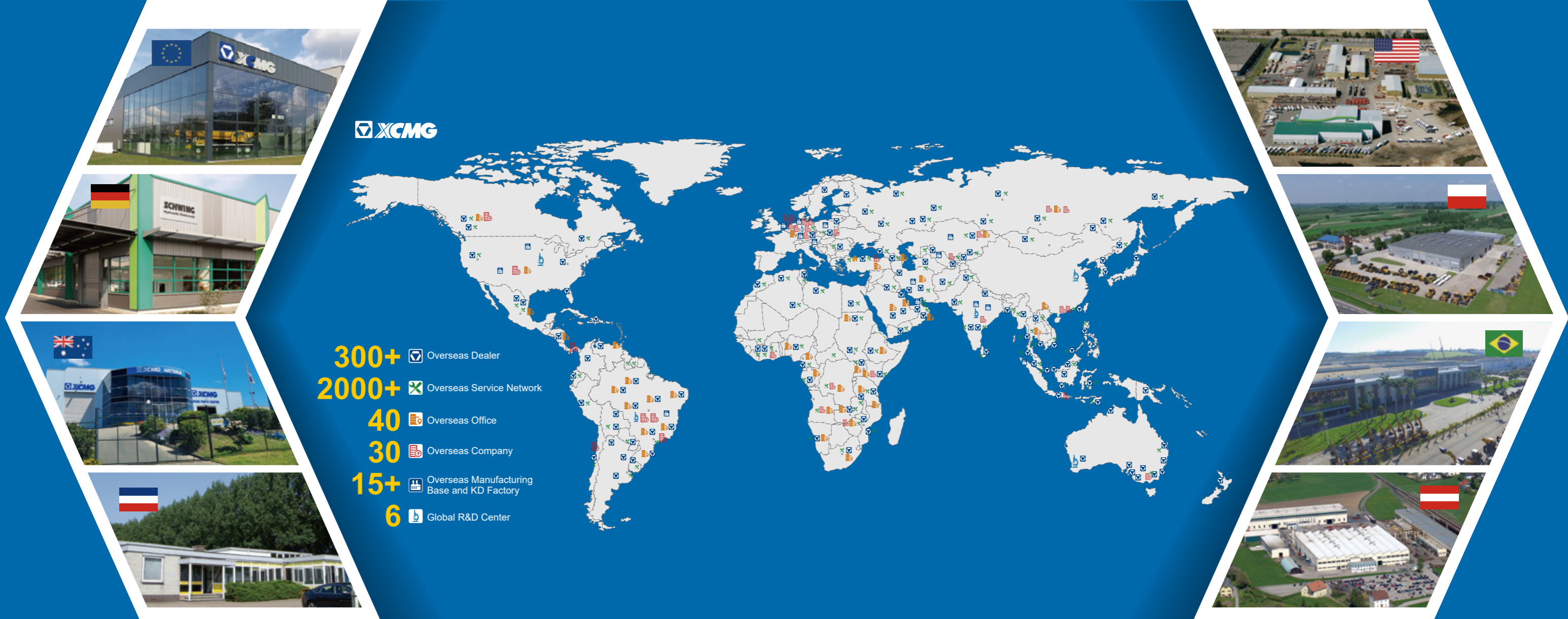
www.xcmg.com

Specifications and designs are subject to change without notice. Machines shown may include optional equipment.

Ref. U/OA/CIII/90/English/2025-11/01

Rated power: 54.6 kW
Operating Weight: 9.5 T
Bucket Capacity: 0.1-0.5 m³





INTRODUCTION OF XCMG

Founded in 1943, XCMG is a multinational corporation with the most comprehensive range of competitive, influential products in the construction machinery industry. Our business covers eight key areas: construction machinery, heavy trucks, mining machinery, sanitation machinery, machinery components, construction, finance, and the ICT industry.

XCMG has established a global R&D network with a total of 6 centers around the world, the US, Germany, Brazil, India and Australia R&D centers, with the China national technology center as its core. In addition to a number of manufacturing bases in China, there are the US, Germany, Netherlands, Poland, Austria, Brazil, India, and Uzbekistan manufacturing bases. XCMG possess two complete machine brands (XCMG, Schwing), and several component brands including FT and AMCA. The strength of this global R&D network and the manufacturing operations have made XCMG the industry-leading global construction equipment manufacturer by today.

For more than 30 years, XCMG has been sowing the seeds of overseas development as the No. 1 exporter in China's construction machinery industry. Today, we have 40 overseas offices and 300+ overseas dealers in 190+ countries and regions worldwide and are still growing rapidly.

XCMG IN AUSTRALIA

Since its foundation in 2006, XCMG is gradually establishing a complete network including: local distribution, supply chain management and an integrated customer services and training. Nowadays, with one headquarter in Melbourne, XCMG Australia has established professional dealers in every state focusing on construction equipment business. Meanwhile, XCMG has deep connections with mining giants like Rio Tinto, BHP and MMG in Australia.

Our local professional team and cutting-edge innovation platform guarantee that our products are carefully crafted to the smallest detail according to the diverse needs of Australian customers.



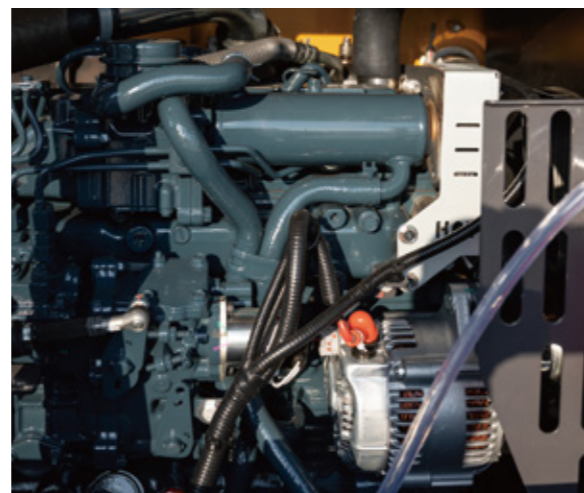
► 54.6 kW powerful engine(the largest in this tonne industry)

The XE90U is powered by the Kubota V3307 engine, which is equipped with an EGR system and a high-flow dual filtration system. This engine achieves precise matching with the hydraulic system, balances fuel economy across various working conditions, and can significantly save fuel without reducing efficiency.

Versatile abilities

The left 62° and right 50° angle swing boom, together with short tail design, XE90U can handle a wider range of loads and can work in more restrictive spaces than traditional tail swing excavators. The arm length has been extended to 2100 mm (compared to 1820 mm on the last version XE90U Stage V), and the blade bracket is extended by 240 mm significantly enhancing digging reach and grading efficiency.

AUX1, AUX2, drain oil lines, and hitch lines are standard for great multi-attachments capabilities. Specially designed blade float allows for easy clean up.

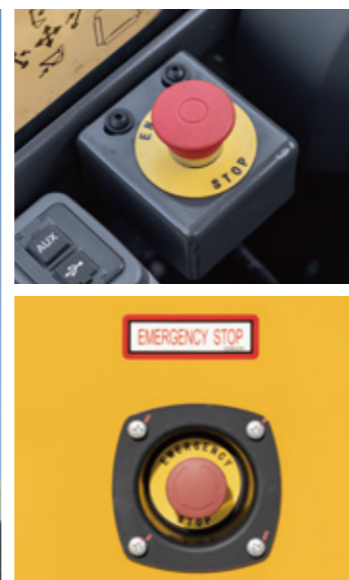


Exceptional Heavy-duty

Powered by a Stage III engine delivering 54.6 kW and equipped with an extra 370 kg counterweight, the XE90U ensures superior stability and lifting capacity. The travel motor has been upgraded, increasing traction by 8%. Combined with the enhanced boom and arm, slew bearing, lower rollers, and more powerful dual speed track motors, together with dual filtration intake air system, these improvements allow for exceptional heavy-duty performance.

Safety

Standard equipment on the XE90U includes the anti-drop valves for boom, arm and blade, which prevent an elevated load from dropping unexpectedly. Additionally, to ensure prompt response in emergencies, an extra emergency stop (e-stop) has been added outside the cabin, complementing the original one inside the cabin.



► Ergonomic and Comfortable

The XE90U is designed to provide you with the best working conditions. The cab has a wide entrance door which makes it more accessible. The OPG/ROPS(ISO 3471) cabin maximizes your safety, creating a secure and comfortable operating environment.



► Easy Service Access

Our XE90U was developed with particular attention to easy service access. With a single access point for the daily maintenance of all main components, fuel level gauge, and refueling through the lockable cap.



- ① Coolant
- ② Air filter
- ③ Radiator
- ④ Engine postprocessor

■ Engine

	XE90U
Model	Kubota V3307
Direct injection	√
Four strokes	√
Water cooled	√
Turbocharged	√
Air to air intercooler	/
Number of cylinders	4
Rated power/speed	54.6 kW/2200 rpm
Maximum torque/speed	265 N·m/1500 rpm
Piston displacement	3.3 L

■ Hydraulic system

	XE90U
Main pump	/
Rated flow of main pump	229 L/min
Relief valve setting pressure	28.3 MPa
Travel system pressure	28.3 MPa
Swing system pressure	23.5 MPa
Pilot system pressure	3.7 MPa
AUX1 breaking flow	131 L/min
AUX1 two-way flow	131 L/min
AUX2 flow	33 L/min

■ Oil capacity

	XE90U
Fuel tank capacity	130 L
Hydraulic tank capacity	76 L
Engine oil capacity	10 L

■ Main performance

	XE90U
Travel speed (H/L)	4.9/2.7 km/h
Swing speed	12 r/min
Gradeability	35 °
Ground pressure	42.3 kPa
Bucket digging force	64 kN
Arm digging force	38 kN
Maximum tractive force	78 kN
Boom offset (Left)	62 °
Boom offset (Right)	50 °

■ Standard

	XE90U
Length of boom	3400 mm
Length of arm	2100 mm
Bucket capacity	0.35 m ³

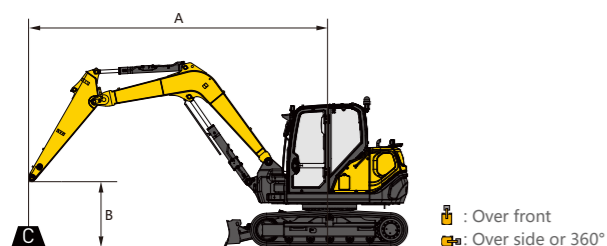
■ Optional

	XE90U
Length of boom	/
Length of arm	1820mm
Bucket capacity	/

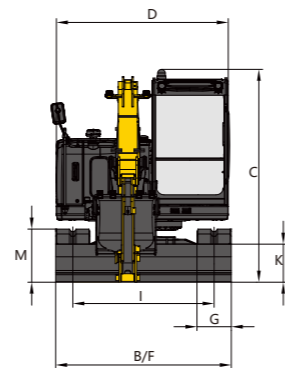
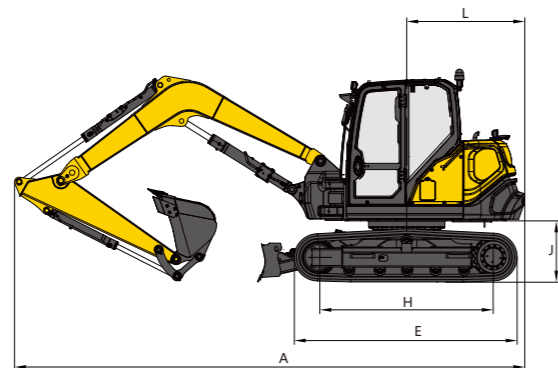
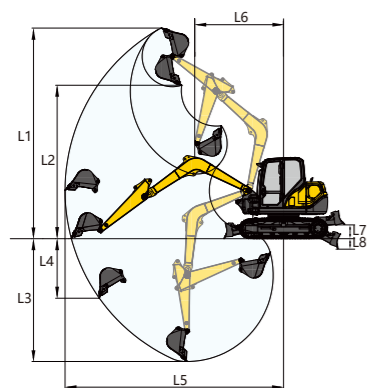
XE90U

■ Cab • arm (1820/2100 mm) • standard counterweight and additional counterweight • without bucket

A	2.0 m		3.0 m		4.0 m		5.0 m		6.0 m		At Max.Reach			
	⊕	⊖	⊕	⊖	⊕	⊖	⊕	⊖	⊕	⊖	⊕	⊖	A	
5.0 m	kg						1598/1588	1284/1161			1596/1430	1282/1041	5/5.3m	
4.0 m	kg				2280/-	1825/-	1597/1581	1283/1153			1298/1191	1043/861	5.7/6.0m	
3.0 m	kg				2182/2167	1725/1560	1559/1542	1247/1117	1182/1168	947/842	1157/1072	927/769	6.1/6.3m	
2.0 m	kg				2070/2054	1621/1455	1506/1488	1197/1065	1160/1143	926/818	1092/1015	872/724	6.2/6.5m	
1.0 m	kg				1980/1954	1528/1362	1458/1435	1151/1015	1136/1115	903/792	1083/1006	861/713	6.2/6.5m	
0.0 m	kg			2986/2915	2228/1940	1935/1897	1496/1309	1426/1398	1121/980	-/1096	-/773	1129/1043	895/736	5.9/6.2m
-1.0 m	kg	4110/4098	4110/3866	2997/2914	2238/1940	1926/1879	1487/1292	1418/1383	1114/966			1259/1148	994/807	5.5/5.8m
-2.0 m	kg	5394/6388	4539/3931	3039/2948	2275/1969	1950/1892	1510/1305	-/1398	-/980			1583/1395	1242/978	4.7/5.0m
-3.0 m	kg	-/2176	-/2045									1654/1573	-/3.7m	



- The lifting capacity is based on the ISO10567 standard.
- * = The maximum lifting capacity is limited by the hydraulic capacity of the machine.
- The lifting capacity does not exceed 87 % of the hydraulic capacity or 75 % of the tipping load with the machine on level and firm ground.
- The operator should be familiar with the machines operating- and maintenance manual. Local regulations concerning the safe operation of machinery must be followed at all times.
- The lift diagrams only covers machines that are originally built by XCMG: without lifting chains and any other lifting equipment.
- When the excavator is used to lift or handle materials, it must comply with local regulations and be equipped with the necessary hose burst valves and an overload warning device complying with EN474-5.



Working range

	1820mm/2100mm
L1 Max. digging height	6850 mm
L2 Max. dumping height	4988/4975 mm
L3 Max. digging depth	3933/4272 mm
L4 Max. vertical wall digging depth	1935/2532 mm
L5 Max. digging reach	7145/7392 mm
L6 Min. swing radius	2898/3000 mm
L7 Maximum dozer lifting height	482/415 mm
L8 Maximum dozer cutting depth	307/349 mm

Dimensions

	XE90U
A Overall length	6680 mm
B Overall width	2300 mm
C Overall height	2795 mm
D Width of platform	2250 mm
E Length of crawler	2900 mm
F Overall width of chassis	2300 mm
G Width of crawler	450 mm
H Track length on ground	2272 mm
I Crawler gauge	1850 mm
J Clearance under counterweight	818.5 mm
K Min. ground clearance	386.5 mm
L Min. tail swing radius	1545 mm
M Height of track	698 mm

Work Equipment

3.4 m boom	●
2.1 m arm	●

Other Equipment

1.2 T counterweight+0.37 T additional counterweight	●
Electric refueling pump	○

Cabin

Cab	●
Cab Front upper-guard	○
Cab Front under-guard	○
Cab top-guard	○
Mechanical suspension seat	○
Deluxe seat (air suspension seat)	●
AM/FM bluetooth radio	●
DAB bluetooth radio	○

Undercarriage

Rubber track	○
Steel track	●

Attachments

Quick coupler 1: Miller PL quick coupler (CE)	○
Quick coupler 2: Addie quick coupler	○
Thumb (includes thumb cylinder and kit)	○
Silence type hydraulic hammer	○
General duty bucket 1: capacity 0.1 m ³ , width 320 mm, weight 135 kg	○
General duty bucket 2: capacity 0.14 m ³ , width 450 mm, weight 178 kg	○
General duty bucket 3: capacity 0.2 m ³ , width 600 mm, weight 209 kg	○
General duty bucket 4: capacity 0.3 m ³ , width 800 mm, weight 195 kg	○
General duty bucket 5: capacity 0.35 m ³ , width 868 mm, weight 261 kg	○
General duty bucket 6: capacity 0.33 m ³ , width 916 mm, weight 227 kg	○
General duty bucket 7: capacity 0.42 m ³ , width 1070 mm, weight 303 kg	○
Ditch cleaning bucket 1: capacity 0.5 m ³ , width 1200 mm, weight 341 kg	○
Ditch cleaning bucket 2: capacity 0.45 m ³ , width 1500 mm, weight 305 kg	○

Hydraulics

Auxiliary piping (single/double-acting, switchable, high flow)	●
Auxiliary piping (double way, for rotating or tilting tool, low flow)	●
Quick-coupler piping	●
Boom cylinder safety valve	●
Arm cylinder safety valve	●
Left electric proportional joystick	●
Right electric proportional joystick	●

ELECTRIC

Rotating warning beacon	●
Travel alarm	●
Rearview camera	●
Displayer languages: Chinese, English, Russian, Portuguese, Spanish, French, Italian, German, Turkish, Bosanski, Republika Slovenija, Norwegian, Hungaty, Nederland	●

Standard: ●
Optional: ○

Optimum Services, XCMG Guaranteed



XCMG-approved attachments



Genuine parts



Extension of warranty



Financial solutions



Maintenance contract



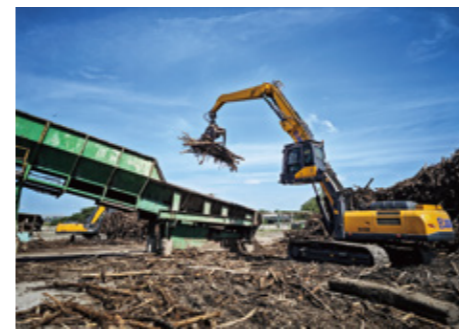
Telematics

Professional Integrated Complete Solutions

The XCMG group has built a strong reputation based on the quality, reliability and durability of its construction machinery. What's more, XCMG has gradually established a service network to constantly provide its local integrated and highly efficient complete solutions for all customers.

Full Range of Services Ready for you

In order to respond to your needs as fast as possible, XCMG experts are on their way to your job site from one of our facilities near you. A full range of services is available in order to reduce your total cost of ownership and increase your revenue.



XCMG Global Spare parts System



Mobile cranes



Excavators



Aerial work platforms



Wheel loaders



Road machinery

