



Hydraulic Excavators **XE155LC**



XCMG MINING EQUIPMENT AUSTRALIA PTY LTD
Add:31-33 Westpool drive, Hallam, Vic,3803,Australia
Phone: +61 0411 591 394
Email: royrossini@xcmg.com
xcmgaustralia@xcmg.com

XUZHOU CONSTRUCTION MACHINERY GROUP IMP.& EXP.CO., LTD
Add:NO.1,Tuolanshan Road, Xuzhou Economic Developing Zone,Jiangsu,
China 221004
Tel: +86 (0) 516 8773 9228
Fax: +86 (0) 516 8773 9230
E-mail: royrossini@xcmg.com xcmgaustralia@xcmg.com

www.xcmg.com

Specifications and designs are subject to change without notice. Machines shown may include optional equipment.

Ref. LC/OA/155/English/BZ/2025-07/01

Rated power: 93 kW
Operating weight: 16200 kg
Bucket Capacity: 0.65 m³



300+ Overseas Dealer
2000+ Overseas Service Network
40 Overseas Office
30 Overseas Company
15+ Overseas Manufacturing Base and KD Factory
6 Global R&D Center



INTRODUCTION OF XCMG

Founded in 1943, XCMG is a multinational corporation with the most comprehensive range of competitive, influential products in the construction machinery industry. Our business covers eight key areas: construction machinery, heavy trucks, mining machinery, sanitation machinery, machinery components, construction, finance, and the ICT industry.

XCMG has established a global R&D network with a total of 6 centers around the world, the US, Germany, Brazil, India and Australia R&D centers, with the China national technology center as its core. In addition to a number of manufacturing bases in China, there are the US, Germany, Netherlands, Poland, Austria, Brazil, India, and Uzbekistan manufacturing bases. XCMG possess two complete machine brands (XCMG, Schwing), and several component brands including FT and AMCA. The strength of this global R&D network and the manufacturing operations have made XCMG the industry-leading global construction equipment manufacturer by today.

For more than 30 years, XCMG has been sowing the seeds of overseas development as the No. 1 exporter in China's construction machinery industry. Today, we have 40 overseas offices and 300+ overseas dealers in 190+ countries and regions worldwide and are still growing rapidly.

XCMG IN AUSTRALIA

Since its foundation in 2006, XCMG is gradually establishing a complete network including: local distribution, supply chain management and an integrated customer services and training. Nowadays, with one headquarter in Melbourne, XCMG Australia has established professional dealers in every state focusing on construction equipment business. Meanwhile, XCMG has deep connections with mining giants like Rio Tinto, BHP and MMG in Australia.

Our local professional team and cutting-edge innovation platform guarantee that our products are carefully crafted to the smallest detail according to the diverse needs of Australian customers.



The efficient and fast hydraulic system is supplemented by a new large-diameter multi-way control valve; the valve spool is further optimized to reduce the internal pressure loss of the channel, improve the controllability, and enhance the overall composite operation efficiency of the machine.

A refueling pump is standard for easy fuel filling.



Special processes and high-strength, wear-resistant steel are extensively used to develop and manufacture structural parts; the strength and service life of the products are greatly improved, making it easy to cope with various harsh working conditions.

The newly upgraded cab, with luxurious interior, offers a wider field of view and a 10% increase in the cab's visual range. All operating buttons are centrally located on the armrest, making them easily accessible and providing a comprehensive upgrade to the driving experience.

Efficient and Economical

Cummins high-pressure common rail electronic fuel injection engine that meets Euro III emission standards

The new generation of Cummins high-pressure common rail electronic fuel injection engines that meet Euro III emission standards achieve optimal fuel injection control, improve combustion efficiency, and increase power and torque by more than 10% compared to the previous generation.



Intelligent electronic control system

It can realize the best matching control of engine speed and hydraulic pump, achieve dynamic balance of power and hydraulic system, and has remote fault diagnosis function, which can record the operation process at any time.

► Strong and efficient

The full-size heavy-load reinforced chassis structure and "undercarriage", combined with the reinforced structural equipment design, ensure the working stability of the entire machine while providing powerful digging force.

The reinforced equipment, combined with the high-pressure system design, ensures that the entire machine has the strongest digging force in its class, can easily cope with various working conditions and requirements, while ensuring a long service life.



More Comfortable and Safe

- 1 Operator workstation
- 2 Ergonomically designed traveling pedal
- 3 Air suspension seat
- 4 Air conditioning vents
- 5 Proportional hydraulic joystick
- 6 High-quality speakers
- 7 Breaker control pedal
- 8 Engine stop switch
- 9 Color LCD display



► **More energy-saving and environment-friendly**

Equipped with a new color LCD touch screen, the machine maintenance can be regularly reminded, making users more worry-free and comfortable.
 Daily maintenance points within easy reach: Whether it is the fuel filter, oil filter, pilot filter or air filter, they can all be maintained directly on the ground.
 Spacious maintenance passage, standard equipped with anti-skid plates, anti-slip stickers, handrails and guardrails to ensure the safety of personnel getting on the vehicle.



REFLECTIVE TAPE



FULL FRONT GUARD AND TOP GUARD

STANDARD REAR AND RIGHT SIDECAMERAS



STANDARD LED LIGHTS



SUNROOF, SUNROOF CURTAIN AND FRONT CURTAIN



STANDARD BOOM AND ARM ANTI-DROP VALVES

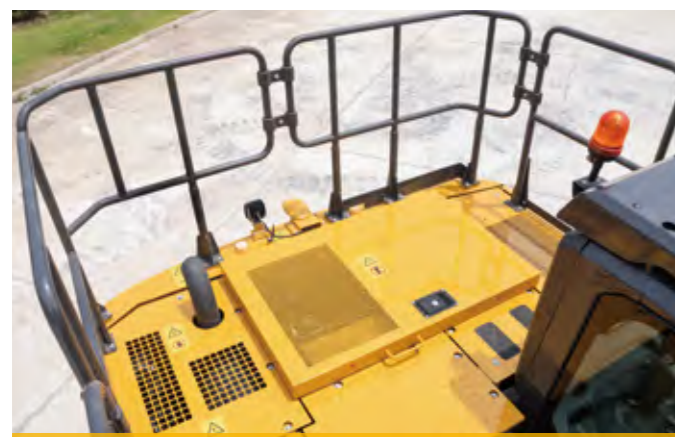




AM/FM BLUETOOTH (HANDS-FREE) RADIO



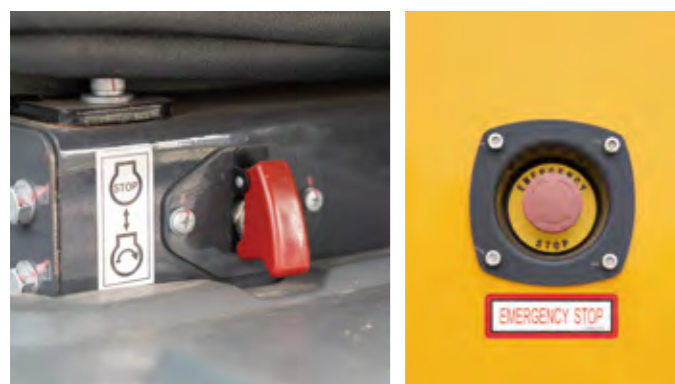
POWERFUL AC



HANDRAILS AND GUARD RAILS



AUX 1 AND AUX 2 AUXILIARY PIPES



ACCESSIBLE EMERGENCY STOP BUTTON



REAR VIEW MIRROR

■ Engine

	XE155LC
Engine brand/model	QSF3.8T3
Rated power/rpm	93 kW/2200 rpm
Electric injection	√
4-stroke	√
Water-cooled	√
Turbocharged	√
Air-to-air intercooling	√
Stroke	155 mm
Cylinder bore	102 mm
Number of cylinders	4
Maximum torque/rpm	500 N·m/1320 rpm
Displacement	3.8 L

■ Hydraulic system

	XE155LC
Main pump	2 × Variable displacement pumps
Pilot pump	1 × Gear pump
PTO pump	1 × Gear pump
Maximum flow rate of main system	2 × 130 L/min
PTO pump flow rate	58 L/min
Main system pressure	34.3 MPa
Main system pressure (boost pressure)	37 MPa
Pilot system pressure	3.9 MPa
PTO pump pressure	24 MPa
Traveling system pressure	34.3 MPa
Swing system pressure	25 MPa

■ Oil capacity

	XE155LC
Fuel tank capacity	245 L
Hydraulic oil tank capacity	95 L

■ Cab Standard

	XE155LC
ISO 10262: 1998 (OPG)	√
ISO 12117-2: 2008 (ROPS)	√

■ Main performance

	XE155LC
Travel speed (high/low)	5.1/3.2 km/h
Swing speed	12.3 r/min
Maximum swing torque	34 kN·m
Gradeability	35° (70%)
Ground specific pressure	41.3 kPa
Bucket digging force	107 kN
Arm digging force	80 kN
Maximum tractive force	122 kN

■ Tracks

	XE155LC
Standard track shoe width	600 mm
Number of track shoes (per side)	45
Number of track rollers (per side)	7
Number of track carrier rollers (carrier plate) (per side)	1

■ Standard

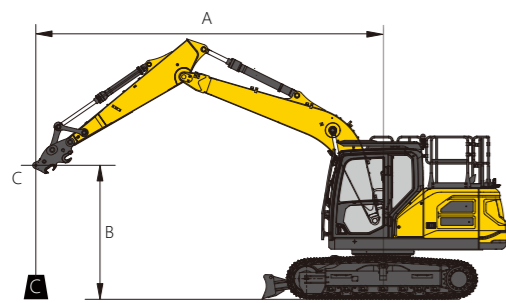
	XE155LC
Length of boom	4600 mm
Length of arm	2520 mm
Bucket capacity	0.65 m ³ (Heavy duty bucket)

■ Optional

	XE155LC
Length of boom	-
Length of arm	-
Bucket capacity	0.52 m ³ (Heavy duty bucket)

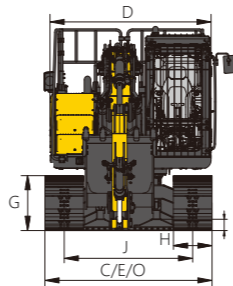
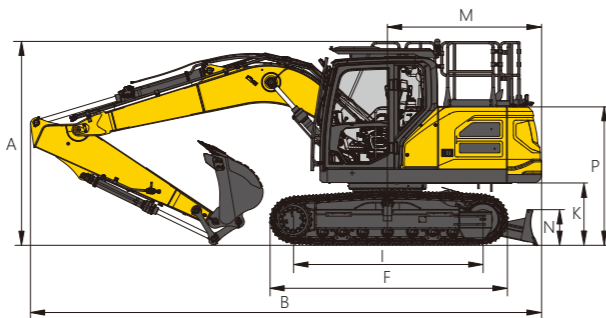
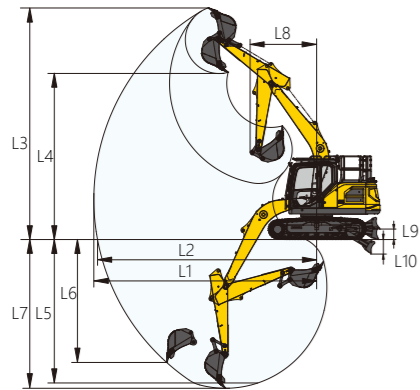
XE155LC

A \ B	1.5 m		3.0 m		4.5 m		6.0 m		7.5 m		At Max.Reach		
	☺	☹	☺	☹	☺	☹	☺	☹	☺	☹	☺	☹	A
7.5 m	kg												
6.0 m	kg				2730	2730					2210	2210	5.36 m
4.5 m	kg				2890	2890	2810	2730			2040	2040	6.34 m
3.0 m	kg			4750	4750	3500	3350	2990	2630		2030	1880	6.87 m
1.5 m	kg			6790	5870	4250	3220	3290	2590		2150	1770	7.03 m
0.0 m	kg			6540	5620	4750	3120	3510	2390		2410	1790	6.87 m
-1.5 m	kg		4740	7190	5410	4770	3300	3430	2280		2940	1980	6.35 m
-3.0 m	kg		8240	6120	5800	4140	3210				3190	2520	5.36 m
-4.5 m	kg												



☺ : Over front
☹ : Over side or 360°

Never attempt to lift or hold any load in excess of the rated lifting capacity at the specified lifting radius and height. The lifting point is located on the lifting eye of the arm (excluding the weight of the bucket). If there are additional attachments such as buckets, etc., the lifting weight must be deducted.
When determining the net lifting weight allowed for the machine, the weight of the slings and any auxiliary lifting devices must be deducted from the rated lifting capacity. Lifting capacity is based on the machine standing on solid and flat ground. The operator should consider working conditions such as soft or uneven ground. Before operating the machine, the operator should be familiar with this manual.



Working range

	XE155LC
L1 Maximum reach	8295 mm
L2 Maximum reach at GRP	8155 mm
L3 Maximum digging height	8630 mm
L4 Maximum unloading height	6185 mm
L5 Digging depth at 8 feet floor length	5328 mm
L6 Maximum vertical digging depth	4580 mm
L7 Maximum digging depth	5535 mm
L8 Minimum swing radius	2475 mm
L9 Maximum lifting height of dozer blade	385 mm
L10 Maximum cutting depth of dozer blade	540 mm

Dimensions

	XE155LC
A Overall height	3155 mm
B Overall length	7825 mm
C Overall width	2590 mm
D Upper structure width	2490 mm
E Chassis width	2590 mm
F Track length	3658 mm
G Track height	836 mm
H Standard track shoe width	600 mm
I Track wheelbase	2910 mm
J Track gauge	1990 mm
K Counterweight ground clearance	956 mm
L Minimum ground clearance	477 mm
M Rear swing radius	2360 mm
N Dozer blade height	540 mm
O Dozer blade width	2590 mm
P Hood height	2210 mm

Work equipment

4.6 m boom	●
2.52 m arm	●

Other equipment

Heating and cooling AC	●
Boxing rings	●
2.9 T counterweight	●
Manual centralized lubrication system	●
Electric refueling pump (50L/min)	●

Cabin

Cab	●
Air suspension seat	●
Cab full-guard	●

Undercarriage

Undercarriage: track length 3665 mm, track gauge 1990 mm	●
Dozer blade	●
Track 1: 500 mm triple grouser shoes	○
Track 2: 600 mm triple grouser shoes	●
Track 3: 700 mm triple grouser shoes	○

Hydraulics

Auxiliary piping (single/double-acting, switchable, high flow)	●
Quick-coupler piping	●
Boom cylinder safety valve	●
Arm cylinder safety valve	●

Attachments

Quick-coupler1: Mechanical quick connector	○
Quick-coupler2: Hydraulic quick coupler	●
Heavy duty bucket 1: capacity 0.52 m ³ , width 999 mm, weight 500 kg	○
Heavy duty bucket 2: capacity 0.65 m ³ , width 1160 mm, weight 545 kg	●

Electric

Display languages: Chinese, English, Russian, Portuguese, Spanish, French, Italian, German, Turkish, Norwegian	●
GPS	●
Rotating warning beacon	●
Tarvel alarm	●
Rearview camera	●
LED work lamp, left+right	●
LED work lamp	●
USB connector	●
24V MAX120W	●
Camera function	●
2 Cab working lamp	●

Standard: ●
Optional: ○

Optimum Services, XCMG Guaranteed



XCMG-approved attachments



Genuine parts



Extension of warranty



Financial solutions



Maintenance contract



Telematics

Professional Integrated Complete Solutions

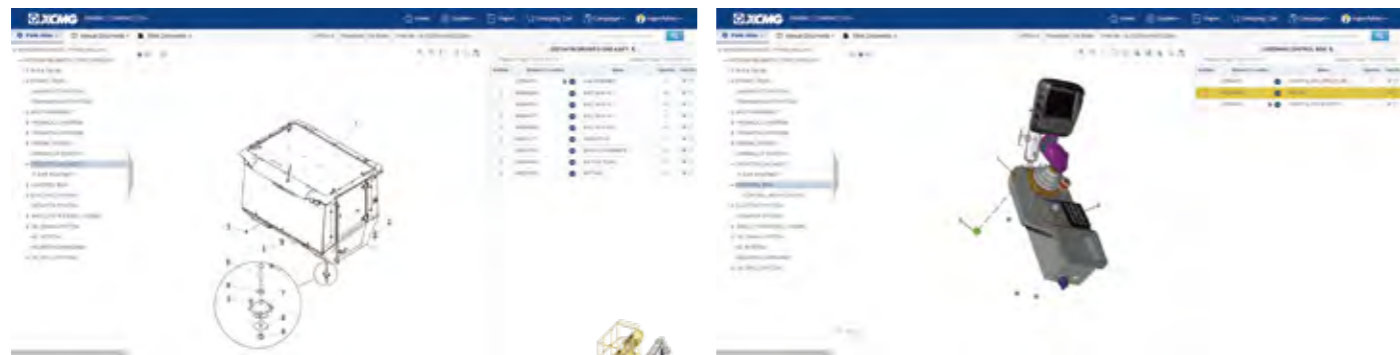
The XCMG group has built a strong reputation based on the quality, reliability and durability of its construction machinery. What's more, XCMG has gradually established a service network to constantly provide its local integrated and highly efficient complete solutions for all customers.

Full Range of Services Ready for you

In order to respond to your needs as fast as possible, XCMG experts are on their way to your job site from one of our facilities near you. A full range of services is available in order to reduce your total cost of ownership and increase your revenue.



XCMG Global Spare parts System



Mobile cranes



Excavators



Aerial work platforms



Wheel loaders



Road machinery

