



Hydraulic Excavators XE215LC



XCMG MINING EQUIPMENT AUSTRALIA PTY LTD
Add:31-33 Westpool drive, Hallam, Vic,3803,Australia
Phone: +61 0411 591 394
Email: royrossini@xcmg.com
xcmgaustralia@xcmg.com

XUZHOU CONSTRUCTION MACHINERY GROUP IMP.& EXP.CO., LTD
Add:NO.1,Tuolanshan Road, Xuzhou Economic Developing Zone,Jiangsu,
China 221004
Tel: +86 (0) 516 8773 9228
Fax: +86 (0) 516 8773 9230
E-mail: royrossini@xcmg.com xcmgaustralia@xcmg.com

www.xcmg.com

Specifications and designs are subject to change without notice. Machines shown may include optional equipment.

HWA215-09-24-1

Rated power: 135 kW
Operating weight: 23.5 T
Bucket Capacity: 1.05 m³



300+ Overseas Dealer
2000+ Overseas Service Network
40 Overseas Office
30 Overseas Company
15+ Overseas Manufacturing Base and KD Factory
6 Global R&D Center



INTRODUCTION OF XCMG

Founded in 1943, XCMG is a multinational corporation with the most comprehensive range of competitive, influential products in the construction machinery industry. Our business covers eight key areas: construction machinery, heavy trucks, mining machinery, sanitation machinery, machinery components, construction, finance, and the ICT industry.

XCMG has established a global R&D network with a total of 6 centers around the world, the US, Germany, Brazil, India and Australia R&D centers, with the China national technology center as its core. In addition to a number of manufacturing bases in China, there are the US, Germany, Netherlands, Poland, Austria, Brazil, India, and Uzbekistan manufacturing bases. XCMG possess two complete machine brands (XCMG, Schwing), and several component brands including FT and AMCA. The strength of this global R&D network and the manufacturing operations have made XCMG the industry-leading global construction equipment manufacturer by today.

For more than 30 years, XCMG has been sowing the seeds of overseas development as the No. 1 exporter in China's construction machinery industry. Today, we have 40 overseas offices and 300+ overseas dealers in 190+ countries and regions worldwide and are still growing rapidly.

XCMG IN AUSTRALIA

Since its foundation in 2006, XCMG is gradually establishing a complete network including: local distribution, supply chain management and an integrated customer services and training. Nowadays, with one headquarter in Melbourne, XCMG Australia has established professional dealers in every state focusing on construction equipment business. Meanwhile, XCMG has deep connections with mining giants like Rio Tinto, BHP and MMG in Australia.

Our local professional team and cutting-edge innovation platform guarantee that our products are carefully crafted to the smallest detail according to the diverse needs of Australian customers.



Newly upgraded electric control positive hydraulic flow system with smoother, more precise movement and improved operability.

A PTO (Power Take Off) pump can provide additional hydraulic power to archive smooth operation performance.



Standard quick hitch hydraulic line, single/dual way auxiliary 1 hydraulic line, auxiliary 2 hydraulic line and drain hydraulic line for multi-purposes. Precise adjustment of pressure and flow in auxiliary lines.

Upgraded economic (N-mode), efficiency (P-mode), lifting mode, and other multi-mode control for variety of working conditions.

Optional upgraded GTX series double locking hydraulic quick hitch.

Productive and Economical

Productive high power engine complies with Tier 3 emissions

Customized-curve fully electronically controlled Cummins engine increases 15 % torque. High-pressure common rail engine technology improves fuel utilization by 5 %. Stage III emission and low-speed with high-torque features provide more efficiency, energy saving, and environmental protection.



More powerful main pumps

2*130LPM large flow main pumps are newly upgraded with the powerful flow than ever. Combined with large diameter cylinders and our electric control positive hydraulic flow system, XE215LC archives optimized flow distributions and smooth operability.

► Reliable

Upgraded undercarriage structure system improves load bearing performance, plus strengthened key stress-bearing parts of chain links improve the lifespan of the XE215LC.

Redesigned and reinforced boom, arm and bushes can deliver better stability and higher reliability.



More Comfortable and Safe

- 1 Operator's station
- 2 Ergonomic travel pedals
- 3 Air suspension seat
- 4 AC vents
- 5 Proportional hydraulic joystick
- 6 High quality speakers
- 7 Hammer control pedal
- 8 Engine stop switch
- 9 Color LCD monitor



► **More energy-saving and environment-friendly**

Centralized electrical box, air filter, oil filter and pilot filter are accessible for maintenance within hand reach.

Long maintenance period: Self-lubricating bearings are used at hinges of working devices, whose maintenance period can reach 500 hours. Maintenance periods of engine oil, oil filter element, and fuel filter element can be doubled to 500 hours using XCMG's proprietary technologies, so the maintenance periods are greatly prolonged.

A wide range of after-sales service system, quick-response rescue mechanism to ensure that you use at ease.





AM/FM BLUETOOTH (HANDS-FREE) RADIO



POWERFUL AC



HANDRAILS AND GUARD RAILS



AUX 1 AND AUX 2 AUXILIARY PIPES



ACCESSABLE EMERGENCY STOP BUTTONS



REAR VIEW MIRROR



■ Engine

	XE215LC
Model	Cummins QSB7
Electric injection	√
Four strokes	√
Water cooling	√
Turbo-charging	√
Air to air intercooler	√
No. of cylinders	6
Rated power/speed (ISO)	135 kW/2050 rpm
Maximum torque/speed	740 N·m/900-1600 rpm
Displacement	6.7 L

■ Hydraulic system

	XE215LC
Main pump	Two variable pumps
Rated flow of main pump	2 × 230 L/min
Main safety valve pressure	34.3/37 MPa
Travel system pressure	34.3 MPa
Swing system pressure	27.5 MPa
Pilot system pressure	3.9 MPa
AUX1 breaking flow	200 L/min
AUX1 two-way flow	350 L/min
AUX2 flow	50 L/min

■ Oil capacity

	XE215LC
Fuel tank capacity	400 L
Hydraulic tank capacity	190 L
Engine oil capacity	23.7 L

■ Main performance

	XE215LC
Travel speed (H/L)	6.0/3.3 km/h
Swing speed	11.8 r/min
Gradeability	≤35 °
Ground pressure	47.1 kPa
Bucket digging force	149 kN
Arm digging force	111 kN
Maximum tractive force	184 kN

■ Standard

	XE215LC
Length of boom	5680 mm
Length of arm	2910 mm
Bucket capacity	1.05 m ³ (Strengthened bucket)

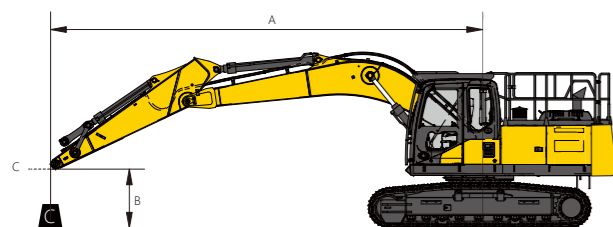
■ Optional

	XE215LC
Length of boom	-
Length of arm	-
Bucket capacity	1.2 m ³ (Earthwork bucket) 0.9 m ³ (Rock bucket)



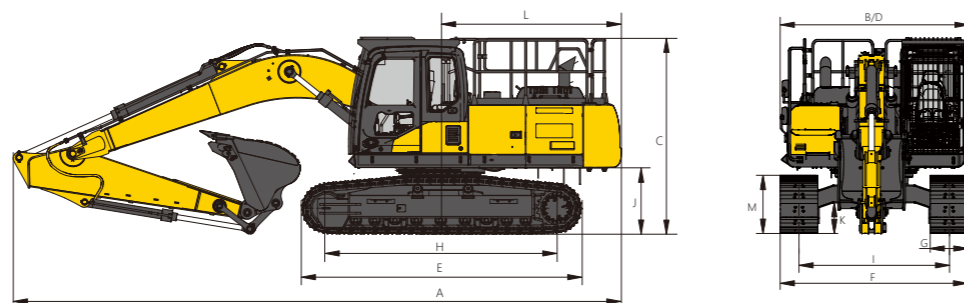
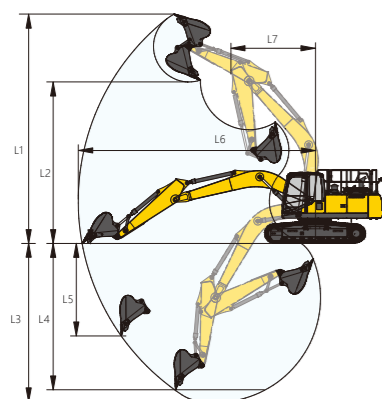
XE215LC

A \ B	1.5 m		3.0 m		4.5 m		6.0 m		7.5 m		At Max.Reach			
	🔧	🔧	🔧	🔧	🔧	🔧	🔧	🔧	🔧	🔧	🔧	🔧	A	
7.5 m	kg						*4617	*4617			*4677	*4677	6.1 m	
6.0 m	kg						*4506	*4506			*4664	3918	7.3 m	
4.5 m	kg						*4982	*4982	*4733	3711	*4747	3363	8.0 m	
3.0 m	kg					*7294	*7294	*5763	4951	*5066	3619	*4887	3087	8.4 m
1.5 m	kg					*8924	6940	*6585	4730	*5475	3512	4801	2984	8.4 m
0.0 m	kg			*5627	*5627	*9847	6684	*7190	4572	5598	3429	4904	3031	8.3 m
-1.5 m	kg	*6332	*6332	*10478	*10478	*10010	6610	*7405	4503	5568	3402	5305	3256	7.8 m
-3.0 m	kg	*11478	*11478	*13503	12494	*9471	6662	*7056	4531			*5846	3791	6.9 m
-4.5 m	kg			*11049	*11049	*7898	6850					*6071	5148	5.6 m



🔧 : Over front
🔧 : Over side or 360°

The mass of slings and any auxiliary, lifting devices shall be deducted from the rated load to determine the net load that may be lifted. Lift capacities are based on the machine standing on a firm, uniform supporting surface. The user shall make allowances for job conditions such as soft or uneven ground. The operator should be fully acquainted with the operator's manual and the operating safety manual furnished by the manufacturer before operating the machine.



Working range

	XE215LC
L1 Max. digging height	9620 mm
L2 Max. dumping height	6780 mm
L3 Max. digging depth	6680 mm
L4 Maximum depth cut for 2240 mm(8 ft) level bottom	6500 mm
L5 Maximum vertical wall digging depth	5715 mm
L6 Max. digging radius	9940 mm
L7 Min. swing radius	3540 mm

Dimensions

	XE215LC
A Overall length	9625 mm
B Overall width	3015 mm
C Overall height	3120 mm
D Width of platform	3000 mm
E Track length	4450 mm
F Overall width of chassis	2990 mm
G Track shoe width	600 mm
H Wheel base of crawler	3650 mm
I Track gauge	2390 mm
J Counterweight clearance	1050 mm
K Min. ground clearance	485 mm
L Min. tail swing radius	2890 mm
M Track height	925 mm

Work Equipment

5.68 m boom	●
2.9 m arm	●
2.5 m arm	○
2.4 m arm	○

Other equipment

4.2 T counterweight	●
Safety handrail	●
Emergency stop switch (1 in the cab, 2 outside)	●
Engine flameout delay protection function	●
Fuel filling pump	○
GPS	●
Manual centralized lubrication system	●
Electric centralized lubrication system	○

Cabin

Cab	●
Deluxe Seats (Air suspension electric heated seats)	●
Cab full-guard	●

Undercarriage

Chassis 1: Chassis length: 4445 mm; Chassis gauge: 2390 mm (need to subtract track)	●
Track 1: 600 mm triple grouser shoes	●
Track 2: 700 mm triple grouser shoes	○
Track 3: 800 mm triple grouser shoes	○

Hydraulics

Auxiliary piping (single/double-acting, switchable, high flow)	●
Auxiliary piping (double way, for rotating or tilting tool, low flow)	●
Quick-coupler piping	●
Boom cylinder explosion-proof valve	●
Arm cylinder explosion-proof valve	●
Left electric proportional joystick	●
Right electric proportional joystick	●

Attachments

Quick coupler 1: Miller PL quick coupler (CE)	○
Quick coupler 2: Miller GTX quick coupler (CE)	●
Breaking hammer 1: triangular breaking hammer	○
Breaking hammer 2: straight breaking hammer	○
Bucket T1: bucket capacity: 1.2 m ³ ; Bucket width: 1491 mm; Bucket weight: 1070 kg	○
Bucket J1: bucket capacity: 1.05 m ³ ; Bucket width: 1354 mm; Bucket weight: 987 kg	●
Bucket J2: bucket capacity: 1.2 m ³ ; Bucket width: 1356 mm; Bucket weight: 957 kg (only 2.7 m / 2.5 m bucket rod)	○
Bucket Y1: bucket capacity: 0.9 m ³ ; Bucket width: 1060 mm; Bucket weight: 924 kg	○
Bucket Y2: bucket capacity: 1.0 m ³ ; Bucket width: 1146 mm; Bucket weight: 965 kg	○
Bucket Q1: bucket capacity: 1.2 m ³ ; Bucket width: 1506 mm; Bucket weight: 800 kg	○

Electric

Rotating warning beacon	●
Travel alarm	●
Rearview camera	●
Display languages: Chinese, English, Russian, Portuguese, Spanish, French, Italian, German, Turkish, Norwegian	●

Standard: ●
Optional: ○

Optimum Services, XCMG Guaranteed



XCMG-approved attachments



Genuine parts



Extension of warranty



Financial solutions



Maintenance contract



Telematics



Professional Integrated Complete Solutions

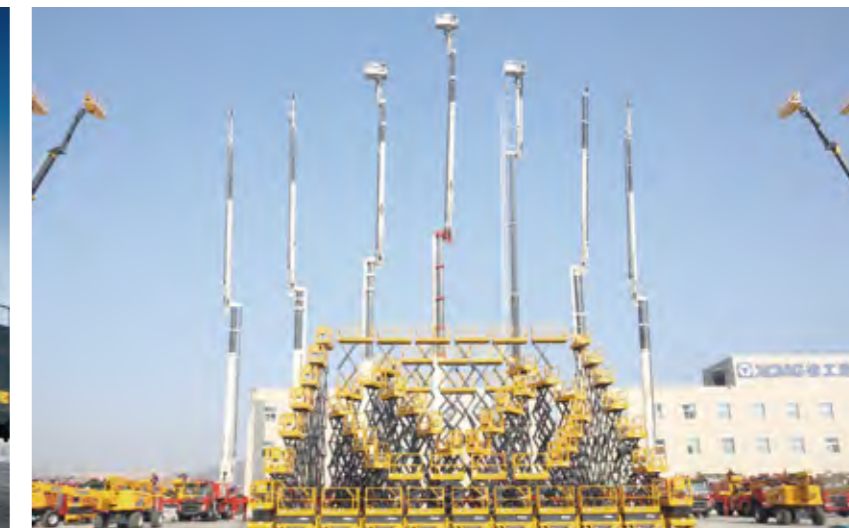
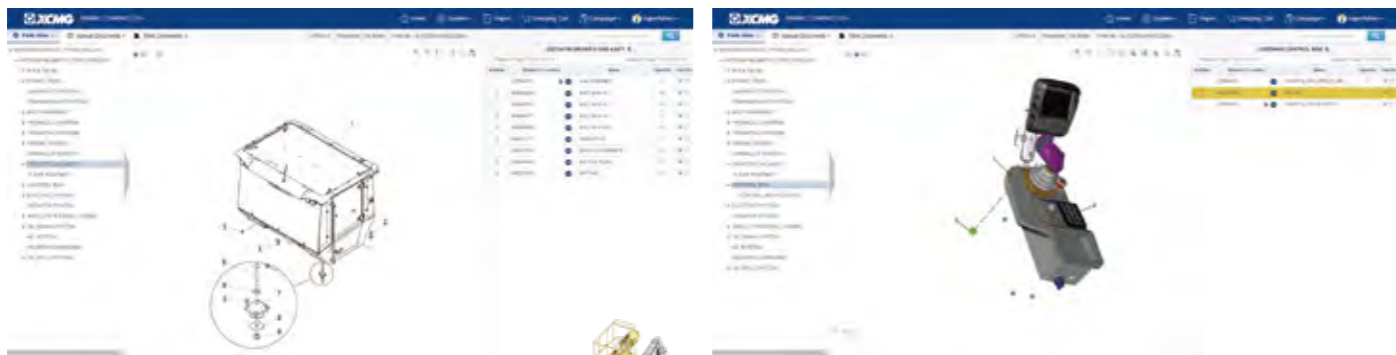
The XCMG group has built a strong reputation based on the quality, reliability and durability of its construction machinery. What's more, XCMG has gradually established a service network to constantly provide its local integrated and highly efficient complete solutions for all customers.

Full Range of Services Ready for you

In order to respond to your needs as fast as possible, XCMG experts are on their way to your job site from one of our facilities near you. A full range of services is available in order to reduce your total cost of ownership and increase your revenue.



XCMG Global Spare parts System



Mobile cranes



Excavators



Aerial work platforms



Wheel loaders



Road machinery

