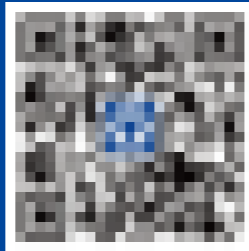




Hydraulic Excavators
XE380LC



XCMG MINING EQUIPMENT AUSTRALIA PTY LTD
Add:31-33 Westpool drive, Hallam, Vic,3803,Australia
Phone: +61 0411 591 394
Email: royrossini@xcmg.com
xcmgaustralia@xcmg.com

XUZHOU CONSTRUCTION MACHINERY GROUP IMP.& EXP.CO., LTD
Add:NO.1,Tuolanshan Road, Xuzhou Economic Developing Zone,Jiangsu,
China 221004
Tel: +86 (0) 516 8773 9228
Fax: +86 (0) 516 8773 9230
E-mail: royrossini@xcmg.com xcmgaustralia@xcmg.com

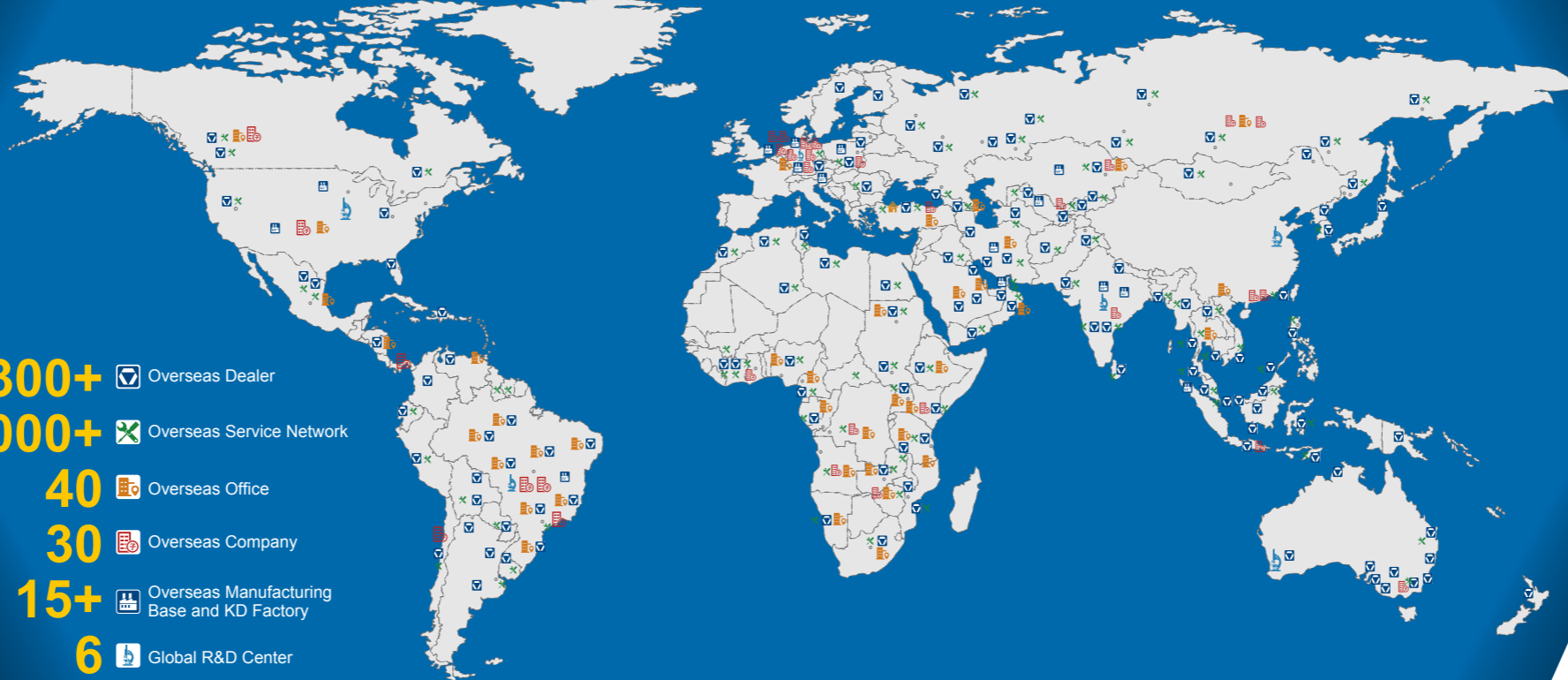
www.xcmg.com

Specifications and designs are subject to change without notice. Machines shown may include optional equipment.

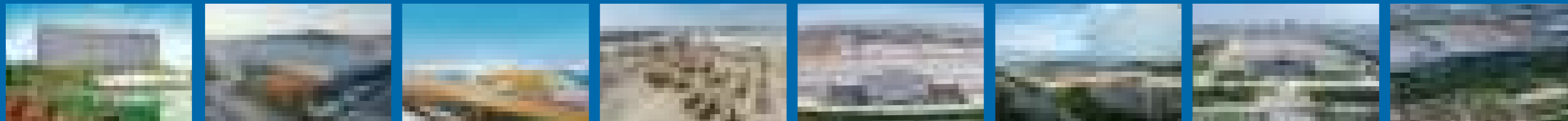
HWA380-09-24-1

Rated power: 214 kW
Operating weight: 40.52 T
Bucket Capacity: 1.9 m³





- 300+** Overseas Dealer
- 2000+** Overseas Service Network
- 40** Overseas Office
- 30** Overseas Company
- 15+** Overseas Manufacturing Base and KD Factory
- 6** Global R&D Center



INTRODUCTION OF XCMG

Founded in 1943, XCMG is a multinational corporation with the most comprehensive range of competitive, influential products in the construction machinery industry. Our business covers eight key areas: construction machinery, heavy trucks, mining machinery, sanitation machinery, machinery components, construction, finance, and the ICT industry.

XCMG has established a global R&D network with a total of 6 centers around the world, the US, Germany, Brazil, India and Australia R&D centers, with the China national technology center as its core. In addition to a number of manufacturing bases in China, there are the US, Germany, Netherlands, Poland, Austria, Brazil, India, and Uzbekistan manufacturing bases. XCMG possess two complete machine brands (XCMG, Schwing), and several component brands including FT and AMCA. The strength of this global R&D network and the manufacturing operations have made XCMG the industry-leading global construction equipment manufacturer by today.

For more than 30 years, XCMG has been sowing the seeds of overseas development as the No. 1 exporter in China's construction machinery industry. Today, we have 40 overseas offices and 300+ overseas dealers in 190+ countries and regions worldwide and are still growing rapidly.

XCMG IN AUSTRALIA

Since its foundation in 2006, XCMG is gradually establishing a complete network including: local distribution, supply chain management and an integrated customer services and training. Nowadays, with one headquarter in Melbourne, XCMG Australia has established professional dealers in every state focusing on construction equipment business. Meanwhile, XCMG has deep connections with mining giants like Rio Tinto, BHP and MMG in Australia.

Our local professional team and cutting-edge innovation platform guarantee that our products are carefully crafted to the smallest detail according to the diverse needs of Australian customers.





Reinforced rock bucket and teeth

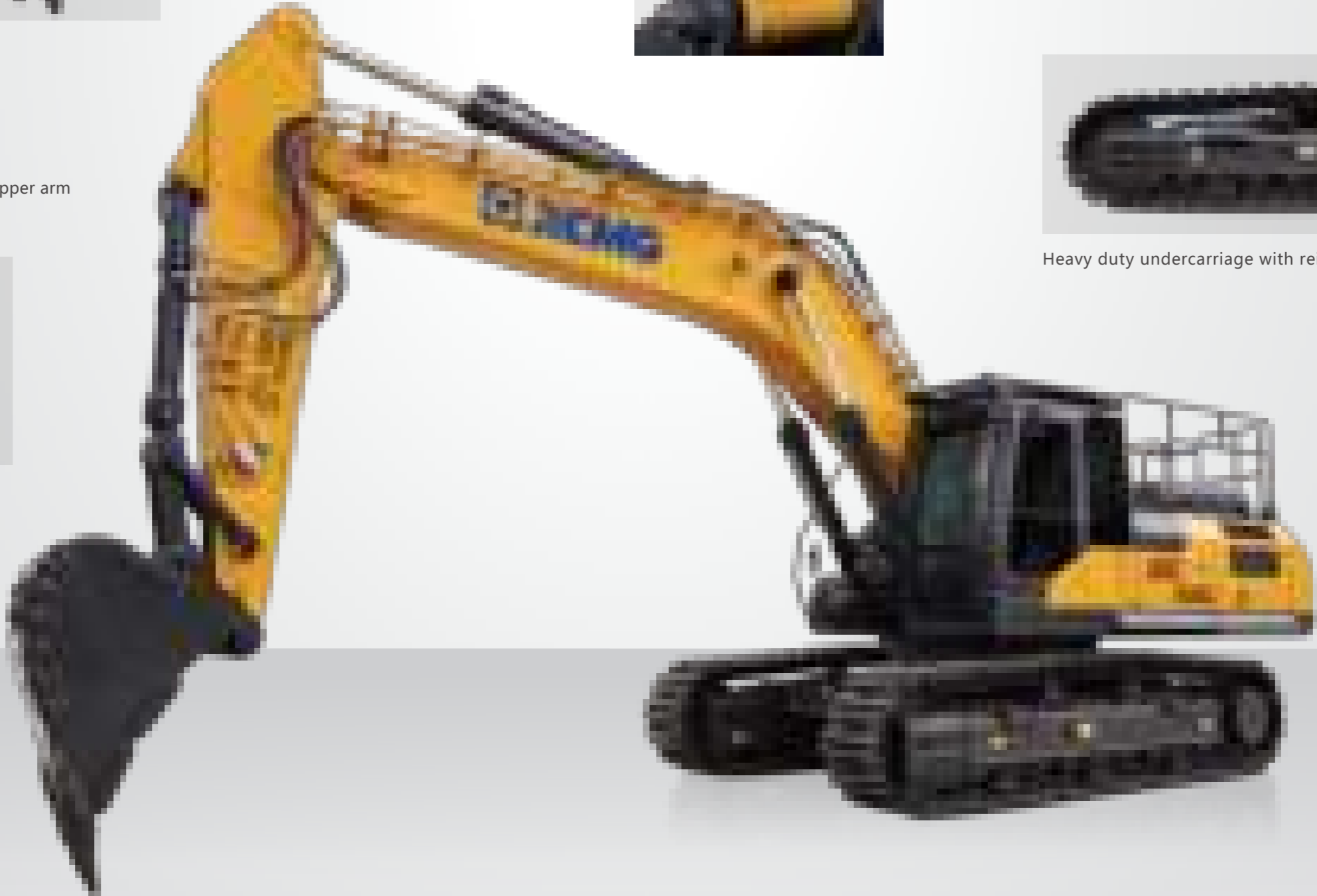


Specially designed long strengthened strike beams installed to prevent damage to dipper arm.



Heavy duty undercarriage with reinforced X-frame, rollers and chains.

Specially designed flange pin seat of dipper arm end with long term worn interval.



► More energy-saving and environment-friendly

Lower fuel consumption

XCMG's special engine adopts a customized torque curve to provide large torque output at low speed, and while providing rush-in power, it greatly reduces fuel consumption and meets the power output and fuel economy under heavy load mode.

The high-pressure common rail system achieves the best fuel injection control and effectively improves the combustion efficiency.

Premium hydraulic control system

Electronically controlled positive flow hydraulic system for rapid responses and sensitive operations. Large replacement main pump and main valve for effective productivity.

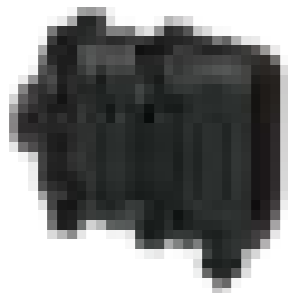
Aux 2 controlled with independent PTO(power take off) pump for excellent control performance.



► More Efficient Return

Efficient main valve

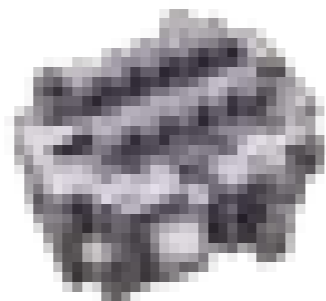
It has outstanding advantages such as "high reliability, small pressure loss, high flow distribution efficiency, and smooth movement", and has greatly improved in energy saving, high efficiency, and controllability.



Powercore air cleaner

Satisfy the working conditions of medium and heavy grayscale.

Low intake resistance reduces engine fuel consumption; prevents premature engine wear, maintains life-cycle filtration of more than 99.99%, and integrates detachable pre-filtering function.



► Silicone oil seal shock absorber is adopted, and the rigidity of the cab floor is improved to reduce the shaking of the cab and reduce the operator's fatigue.

1 Multifunction Color Display

Provide operators with comprehensive and easy-to-read machine information, comprehensively monitor the working status of the engine and hydraulic system, and query various machine operation and fault diagnosis information.

2 Smart air conditioner

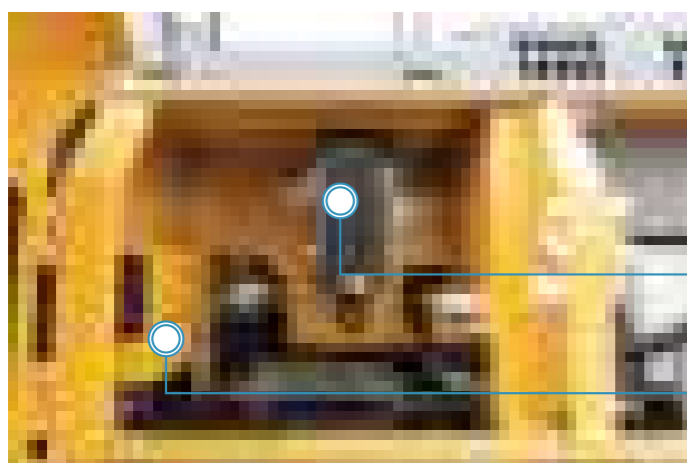
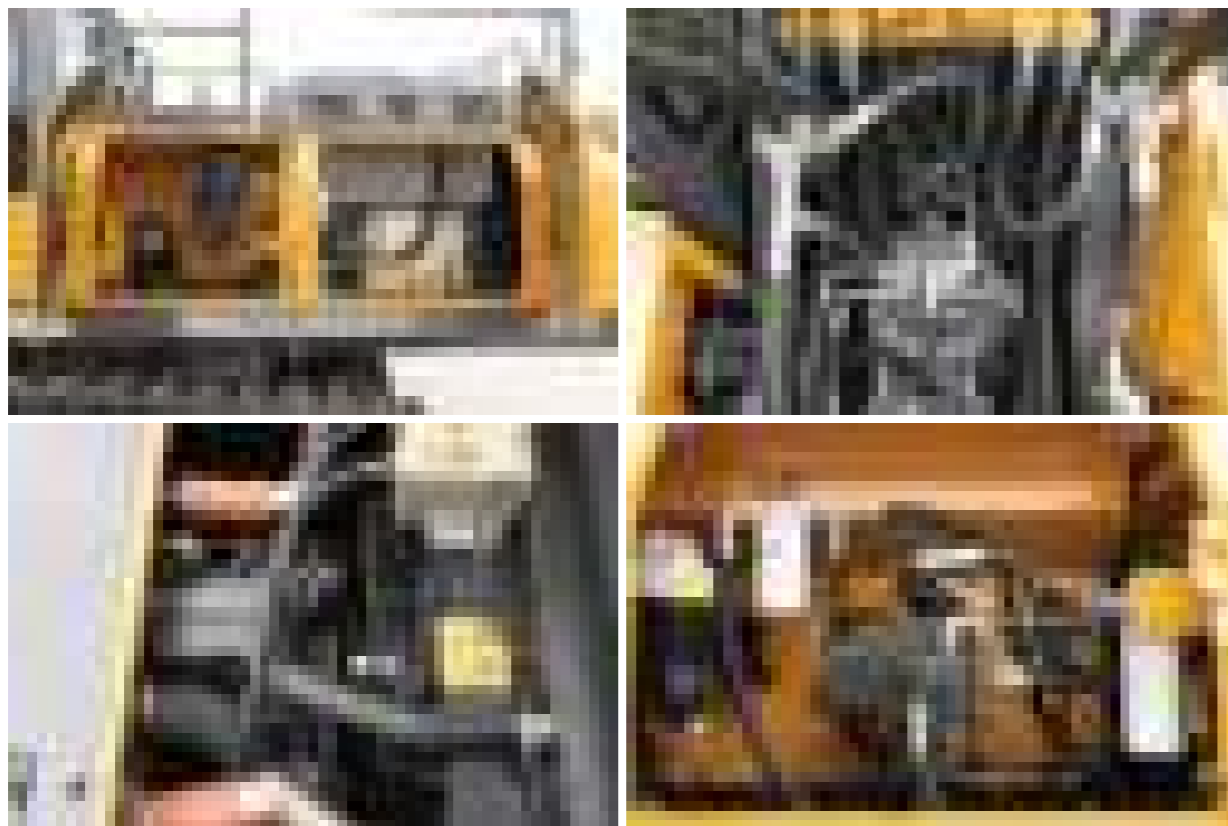
It can sense the indoor and outdoor temperature and sunshine intensity, and intelligently adjust the air volume and compressor displacement to ensure that the driver works in a comfortable environment.

3 Emergency stop switch

In case of emergency, press the emergency stop switch to turn off the fire in an emergency, effectively protecting the safety of personnel.



- Very convenient access to radiators and cooling devices makes cleaning much easier.
- Various parts of the engine are accessible from above and through the side panels.



Powercore air cleaner

Integrated electrical box

■ Engine

	XE380LC
Model	QSL9
Direct injection	√
Four strokes	√
Water cooled	√
Turbocharged	√
Air to air intercooler	√
Number of cylinders	6
Rated power/speed (ISO)	214 kW/2100 rpm
Maximum torque/speed	1343 N·m/1300 rpm
Piston displacement	8.9 L

■ Hydraulic system

	XE380LC
Main pump	Two variable pumps
Rated flow of main pump	2 × 315 L/min
Main system pressure (power-max pressure)	34.3/37.3 MPa
Travel system pressure	34.3 MPa
Swing system pressure	26.5 MPa
Pilot system pressure	3.9 MPa
AUX1 breaking flow	560 L/min
AUX1 two-way flow	560 L/min
AUX2 flow	45 L/min

■ Oil capacity

	XE380LC
Fuel tank capacity	631 L
Hydraulic tank capacity	320 L
Engine oil capacity	30 L

■ Main performance

	XE380LC
Travel speed (H/L)	5.6/3.3 km/h
Swing speed	9.6 r/min
Gradeability	≤35 °
Ground pressure	69 kPa
Bucket digging force	273 kN
Arm digging force	180 kN
Maximum tractive force	267 kN

■ Standard

	XE380LC
Length of boom	6400 mm
Length of arm	3200 mm
Bucket capacity	1.9 m ³ (Rock Bucket)

■ Optional

	XE380LC
Length of boom	-
Length of arm	2670 mm
Bucket capacity	2.1 m ³ (Strengthen bucket)



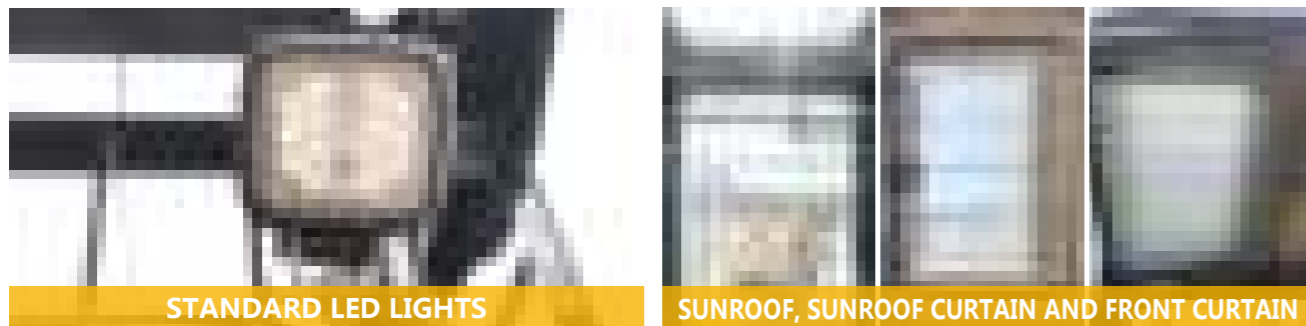


REFLECTIVE TAPE



FULL FRONT GUARD AND TOP GUARD

STANDARD REAR AND RIGHT SIDE CAMERAS



STANDARD LED LIGHTS

SUNROOF, SUNROOF CURTAIN AND FRONT CURTAIN



STANDARD BOOM AND ARM ANTI-DROP VALVES



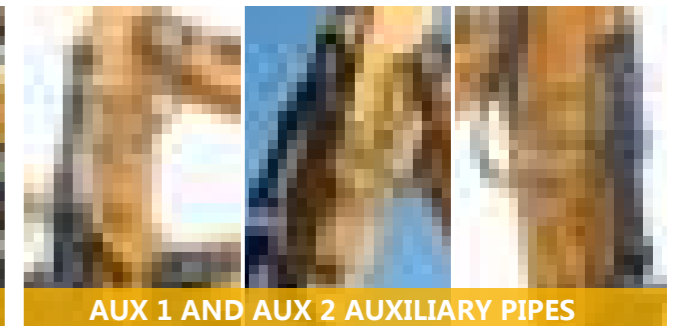
AM/FM BLUETOOTH (HANDS-FREE) RADIO



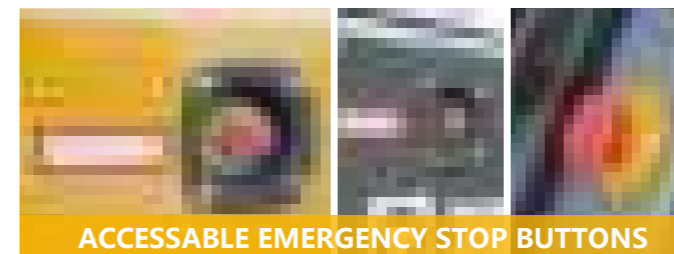
POWERFUL AC



HANDRAILS AND GUARD RAILS



AUX 1 AND AUX 2 AUXILIARY PIPES



ACCESSABLE EMERGENCY STOP BUTTONS



REAR VIEW MIRROR





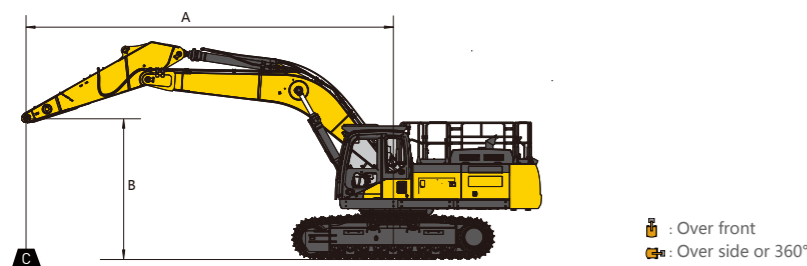
Lifting Capacities Dimensions & Working Range



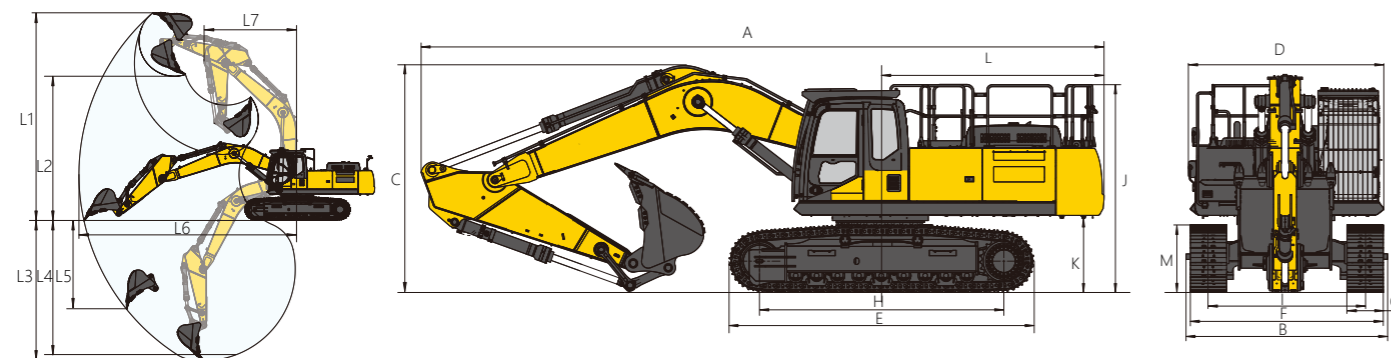
Standard and Optional Equipment

XE380LC

B	A	1.5 m		3.0 m		4.5 m		6.0 m		7.5 m		9.0 m		At Max.Reach		
		☐	☐ ^e	☐	☐ ^e	☐	☐ ^e	☐	☐ ^e	☐	☐ ^e	☐	☐ ^e	☐	☐ ^e	A
7.5 m	kg									*8760	7760			*8130	7600	7.6 m
6.0 m	kg									*9700	7690			*7990	6340	8.5 m
4.5 m	kg					*14630	*14630	*11820	10290	*10430	7460	*8110	5670	*8130	5670	9.0 m
3.0 m	kg					*18570	14400	*13700	9730	*11400	7170	9090	5540	*8530	5320	9.3 m
1.5 m	kg					*21340	13530	*15330	9250	11620	6910	8940	5410	8580	5200	9.3 m
0.0 m	kg					*22270	13180	15870	8950	11410	6720	8840	5320	8810	5310	9.0 m
-1.5 m	kg			*16540	*16540	*21850	13120	15730	8840	11320	6640			9520	5690	8.5 m
-3.0 m	kg	*18910	*18910	*25070	*25070	*20280	13250	*15470	8890	11390	6710			11070	6540	7.7 m
-4.5 m	kg			*22790	*22790	*17080	13590	*12860	9150					*11870	8520	6.4 m



The mass of slings and any auxiliary, lifting devices shall be deducted from the rated load to determine the net load that may be lifted. Lift capacities are based on the machine standing on a firm, uniform supporting surface. The user shall make allowances for job conditions such as soft or uneven ground. The operator should be fully acquainted with the operator's manual and the operating safety manual furnished by the manufacturer before operating the machine.



Working range

	XE380LC
L1 Maximum digging height	10330 mm
L2 Maximum dumping height	7435 mm
L3 Maximum digging depth	7293 mm
L4 Maximum depth cut for 2240 mm(8 ft) level bottom	7116 mm
L5 Maximum vertical wall digging depth	4662 mm
L6 Maximum digging radius	11074 mm
L7 Minimum swing radius	4405 mm

Dimensions

	XE380LC
A Overall length	11340 mm
B Overall width	3200 mm
C Overall height	3500 mm
D Width of platform	3200 mm
E Track length	5071 mm
F Overall width of chassis	3190 mm
G Track width	600 mm
H Track wheelbase	4040 mm
I Gauge	2590 mm
J Counterweight clearance	1274.5 mm
K Minimum ground clearance	550.5 mm
L Minimum tail swing radius	3700 mm
M Track height	1152 mm

WORK EQUIPMENT

6.4 m boom	●
3.2 m arm	●

Other Equipment

7.2 T counterweight	●
Safety handrail	●
Fuel filling pump	○

Cabin

Cab	●
Deluxe Seats (Air suspension electric heated seats)	●
Cab front under-guard (mesh)	○
Cab full-guard	●
Manual centralized lubrication system	●
Non-all point electric centralized lubrication system	○
All-point electric centralized lubrication system	○

Undercarriage

Chassis length: 5071 mm; Chassis gauge: 2590 mm	●
600 mm double grouser track	●

Hydraulics

Auxiliary piping (single/double-acting, switchable, high flow)	●
Auxiliary piping (double way, for rotating or tilting tool, low flow)	●
Quick coupler piping	●
Left electric proportional joystick	●
Right electric proportional joystick	●

Attachments

Quick coupler 1: Miller GTX quick coupler (CE)	○
Thumb (includes thumb cylinder and kit)	○
Bucket Y1: bucket capacity: 1.9 m ³ ; Bucket width: 1770 mm; Bucket weight: 1922 kg	●

Standard: ●
Optional: ○

Electric

Rotating warning beacon	●
Travel alarm	●
Rearview camera	●
Display languages: Chinese, English, Russian, Portuguese, Spanish, French, Italian, German, Turkish, Norwegian	●
Right camera	○



XCMG-approved attachments



Genuine parts



Extension of warranty



Financial solutions



Maintenance contract



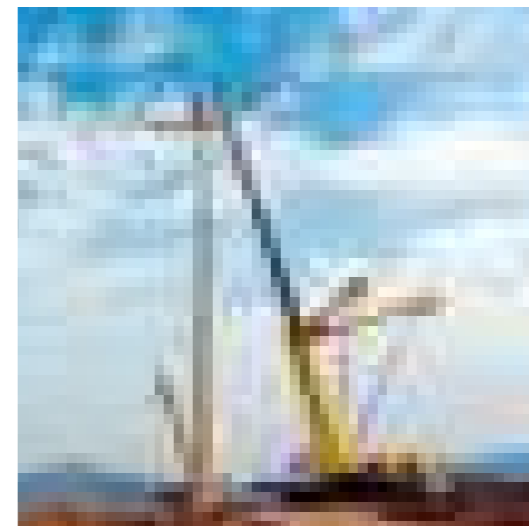
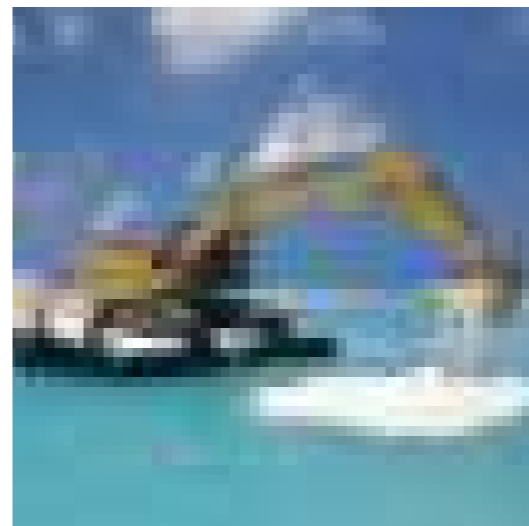
Telematics

Professional Integrated Complete Solutions

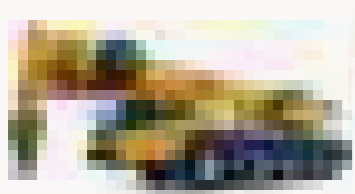
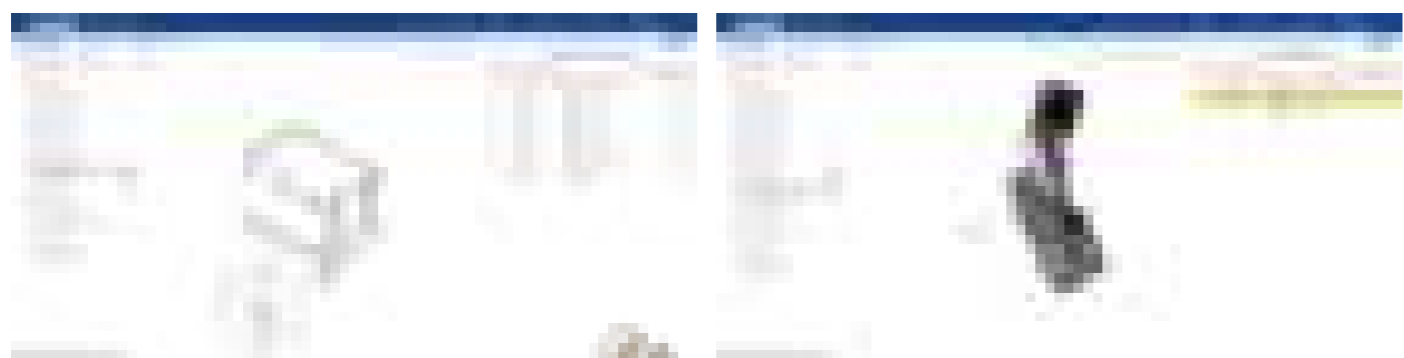
The XCMG group has built a strong reputation based on the quality, reliability and durability of its construction machinery. What's more, XCMG has gradually established a service network to constantly provide its local integrated and highly efficient complete solutions for all customers.

Full Range of Services Ready for you

In order to respond to your needs as fast as possible, XCMG experts are on their way to your job site from one of our facilities near you. A full range of services is available in order to reduce your total cost of ownership and increase your revenue.



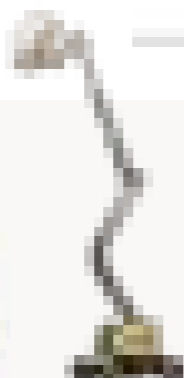
XCMG Global Spare parts System



Mobile cranes



Excavators



Aerial work platforms



Wheel loaders



Road machinery

