



# Hydraulic Excavators **XE500LC**



**XCMG MINING EQUIPMENT AUSTRALIA PTY LTD**  
Add:31-33 Westpool drive, Hallam, Vic,3803,Australia  
Phone: +61 0411 591 394  
Email: royrossini@xcmg.com  
xcmgaustralia@xcmg.com

**XUZHOU CONSTRUCTION MACHINERY GROUP IMP.& EXP.CO., LTD**  
Add:NO.1,Tuolanshan Road, Xuzhou Economic Developing Zone,Jiangsu,  
China 221004  
Tel: +86 (0) 516 8773 9228  
Fax: +86 (0) 516 8773 9230  
E-mail: royrossini@xcmg.com xcmgaustralia@xcmg.com

[www.xcmg.com](http://www.xcmg.com)

Specifications and designs are subject to change without notice. Machines shown may include optional equipment.

HWA500-09-24-2

Rated power: 277 kW  
Operation weight: 52000 kg  
Bucket capacity: 2.8 m<sup>3</sup>



**300+** Overseas Dealer

**2000+** Overseas Service Network

**40** Overseas Office

**30** Overseas Company

**15+** Overseas Manufacturing Base and KD Factory

**6** Global R&D Center

## INTRODUCTION OF XCMG

Founded in 1943, XCMG is a multinational corporation with the most comprehensive range of competitive, influential products in the construction machinery industry. Our business covers eight key areas: construction machinery, heavy trucks, mining machinery, sanitation machinery, machinery components, construction, finance, and the ICT industry.

XCMG has established a global R&D network with a total of 6 centers around the world, the US, Germany, Brazil, India and Australia R&D centers, with the China national technology center as its core. In addition to a number of manufacturing bases in China, there are the US, Germany, Netherlands, Poland, Austria, Brazil, India, and Uzbekistan manufacturing bases. XCMG possess two complete machine brands (XCMG, Schwing), and several component brands including FT and AMCA. The strength of this global R&D network and the manufacturing operations have made XCMG the industry-leading global construction equipment manufacturer by today.

For more than 30 years, XCMG has been sowing the seeds of overseas development as the No. 1 exporter in China's construction machinery industry. Today, we have 40 overseas offices and 300+ overseas dealers in 190+ countries and regions worldwide and are still growing rapidly.

## XCMG IN AUSTRALIA

Since its foundation in 2006, XCMG is gradually establishing a complete network including: local distribution, supply chain management and an integrated customer services and training. Nowadays, with one headquarter in Melbourne, XCMG Australia has established professional dealers in every state focusing on construction equipment business. Meanwhile, XCMG has deep connections with mining giants like Rio Tinto, BHP and MMG in Australia.

Our local professional team and cutting-edge innovation platform guarantee that our products are carefully crafted to the smallest detail according to the diverse needs of Australian customers.



➤ **Comfortable operating experience**

- Rear camera provide better view.
- Air suspension seat equipped with electric heating function.

➤ **Excellent after-sales service**

- Global after-sales service system and quick response mechanism.
- Real-time technical consultation and maintenance.

➤ **Multiple applications**

- Different boom, arm and bucket combinations can adapt to as many working conditions as possible.
- Multi-functional work tool system can meets various operational requirements including digging, breaking, thump plier and so on.

➤ **Standard fully guard and handrails**

- Fully front guard and roof guard.
- Handrails on top of upper frame (full protection type)

➤ **Ecological and economical**

- Electronically controlled positive flow hydraulic system.
- Customized powerful Cummins engine.
- Operations in ECO mode can save more fuel for you.

➤ **Safe and durable**

- Upgrade heavy duty long crawler undercarriage for high stability.
- Strengthened chain links, upper rollers, and lower rollers with full track protection for additional reliability.
- ROPS and OPG certified cab and rear camera for additional safety.



## Ecological And Economical

Customized-curve Cummins engine provides more powerful with 3 %-9 % reduction of fuel consumption and 15 %-26 % reduction of engine stall.

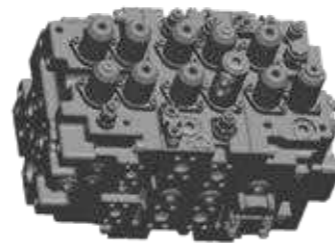
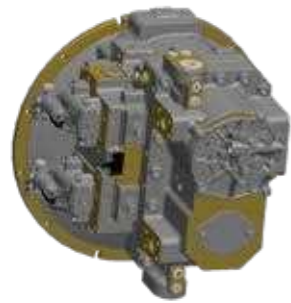
Stage III emission and low-speed with high-torque features provide more efficiency, energy saving, and environmental protection.



XE500LC adopts electronically controlled positive flow hydraulic system for rapid responses and sensitive operations.

Original imported large replacement main pump and main valve can effectively improve 3 %-5 % output efficiency with heavy load.

The combination of double swing motors makes the XE500LC more powerful and more efficient.



## More Comfortable and Safe

- 1 Brand-new Air conditioner and heater: Indoor and outdoor ambient temperature can be perceived through sensors and automatically adjusted to comfortable temperature. A good comfortable environment for operators can be provided with the cooperation of a multi-position adjustable air outlet.
- 2 Comfortable high-performance seats: air suspension seats with electric heating functions can achieve multi-dimensional adjustment and isolation of vibration waves.
- 3 New generation of instruments: high-end 7-inch large screen display, detailed page layout, clear picture quality, reserved video display function in addition to main functions, and supporting a variety of video formats.



Specially designed reinforced left and right side body bump guards with thicker plate.

An undercarriage built for unbeatable durability with reinforced guide frame, HD track shoes of thick steel plate, and increased durability of the track links.

Boom and arm reinforced for extreme conditions with thicker plate, XCMG patent arm T-bushes, and strengthened forged parts.



Standard ROPS (Roll-Over-Protective Structure) and OPG-compliant cab with front and top guards to ensure greater safety for the operator.

Right side camera and rear view camera fitted as standard for easy safety checks around the machine.



Specially designed long strengthened strike beams installed to prevent damage to dipper arm.

The independently developed multi-functional intelligent work tool control system can realize crushing, shearing, cleaning, compacting, milling, transporting, pinching, grasping, scraping, loosening, lifting, and other operations, and can truly integrate multiple operations into one machine.

With first-rate digging force, the machine can be fully competent under complicated working conditions.



## ► Maintenance And Service

Centralized electrical box, air filter, oil filter and pilot filter are accessible for maintenance within hand reach. Long maintenance period: Self-lubricating bearings are used at hinges of working devices, whose maintenance period can reach 500 hours. Maintenance periods of engine oil, oil filter element, and fuel filter element can be doubled to 500 hours using XCMG's proprietary technologies, so the maintenance periods are greatly prolonged.

A wide range of after-sales service system, quick-response rescue mechanism to ensure that you use at ease.



## ► Main Specifications

### ■ Engine

	XE500LC
Model	QSX12
Direct injection	√
Four strokes	√
Water cooling	√
Turbo-charging	√
Air to air intercooler	√
No. of cylinders	6
Rated power/speed	277 kW/2100 rpm
Maximum torque/speed	1898 N·m/1300 rpm
Displacement	11.8 L

### ■ Hydraulic system

	XE500LC
Two variable pumps	Two piston pumps
Rated flow of main pump	2 × 315 L/min
Main system pressure (power-max pressure)	34.3/37 MPa
Travel system pressure	34.3 MPa
Swing system pressure	26 MPa
Pilot system pressure	3.9 MPa
AUX1 breaking flow	500 L/min
AUX1 two-way flow	500 L/min
AUX2 flow	55 L/min

### ■ Oil capacity

	XE500LC
Fuel tank capacity	650 L
Hydraulic tank capacity	430 L
Engine oil capacity	36 L

### ■ Main performance

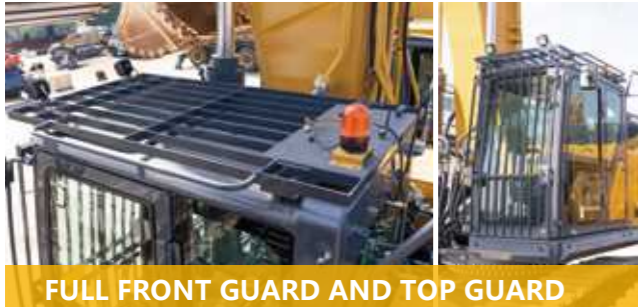
	XE500LC
Travel speed (H/L)	5.4/3.2 km/h
Swing speed	7.9 r/min
Gradeability	≤35 °
Ground pressure	87 kPa
Bucket digging force	288 kN
Arm digging force	247 kN
Maximum tractive force	336 kN

### ■ Standard

	XE500LC
Length of boom	6900 mm
Length of arm	
Bucket capacity	2.8 m <sup>3</sup>



# Safety and convenience



FULL FRONT GUARD AND TOP GUARD



STANDARD REAR AND RIGHT SIDE CAMERAS



STANDARD LED LIGHTS



SUNROOF, SUNROOF CURTAIN AND FRONT CURTAIN



STANDARD BOOM AND ARM ANTI-DROP VALVES



# Safety and convenience



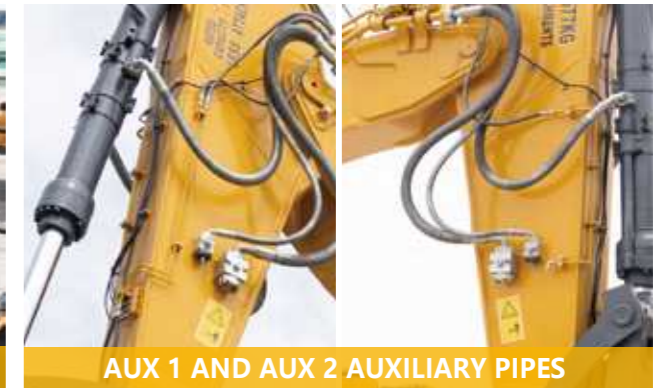
AM/FM BLUETOOTH (HANDS-FREE) RADIO



POWERFUL AC



HANDRAILS AND GUARD RAILS



AUX 1 AND AUX 2 AUXILIARY PIPES



ACCESSIBLE EMERGENCY STOP BUTTONS

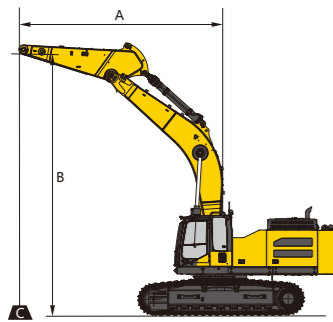


REAR VIEW MIRROR



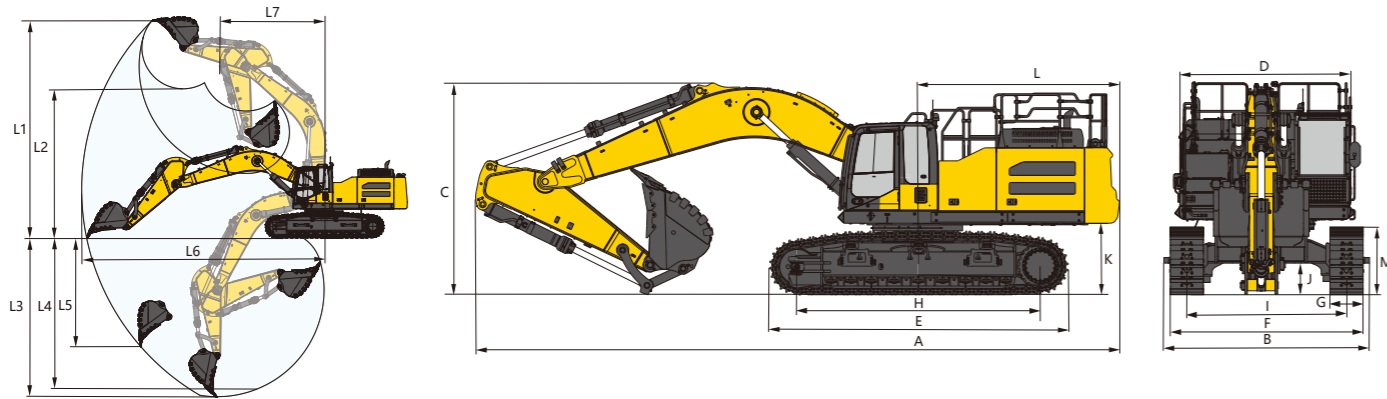
## XE500LC

B \ A	3.0 m		4.5 m		6.0 m		7.5 m		9.0 m		At Max.Reach			
													A	
9.0 m	kg										*9895	*9895	6.9 m	
7.5 m	kg						*10933	*10933			*9240	*9240	8.1 m	
6.0 m	kg				*12666	*12666	*11320	*11320			*9035	8911	8.9 m	
4.5 m	kg			*19143	*19143	*14432	*14432	*12164	11262	*10927	8685	*9121	8101	9.4 m
3.0 m	kg			*16748	*16748	*16295	14621	*13132	10833	*11348	8505	*9464	7689	9.7 m
1.5 m	kg			*12521	*12521	*17608	14062	*13914	10554	*11702	8331	*10103	7577	9.7 m
0.0 m	kg			*18015	*18015	*18038	13764	*14258	10339	*11746	8218	*11088	7754	9.4 m
-1.5 m	kg	*14176	*14176	*22649	20490	*17566	13685	*13960	10263			*11204	8291	8.9 m
-3.0 m	kg	*24598	*24598	*20353	*20353	*16099	13786	*12661	10349			*11167	9412	8.1 m
-4.5 m	kg			*16538	*16538	*13035	*13035					*10648	*10648	6.9 m



: Over front  
 : Over side or 360°

The mass of slings and any auxiliary lifting devices shall be deducted from the rated load to determine the net load that may be lifted. Lift capacities are based on the machine standing on a firm, uniform supporting surface. The user shall make allowances for conditions such as soft or uneven ground. The operator should be fully acquainted with the operator's manual and the operating safety manual furnished by the manufacturer before operating the machine.



### Working range

	XE500LC
L1 Max. digging height	10742 mm
L2 Max. dumping height	7633 mm
L3 Max. digging depth	7216 mm
L4 Maximum depth cut for 2240 mm (8 ft) level bottom	7052 mm
L5 Maximum vertical wall digging depth	4780 mm
L6 Max. digging radius	11632 mm
L7 Min. swing radius	5024 mm

### Dimensions

	XE500LC
A Overall length	12340 mm
B Overall width (with pedal)	3592 (including step) mm
C Overall height	3950 mm
D Width of platform	3095 mm
E Track length	5470 mm
F Overall width of chassis (without pedal)	3340 mm
G Track shoe width	600 mm
H Wheel base of crawler	4407 mm
I Track gauge	2740 mm
J Counterweight clearance	1365 mm
K Min. ground clearance	518 mm
L Min. tail swing radius	3953 mm
M Track height	1225 mm

### Work Equipment

6.9 m boom	<input checked="" type="checkbox"/>
2.9 m arm	<input checked="" type="checkbox"/>
2.8 m <sup>3</sup> rock duty bucket	<input checked="" type="checkbox"/>

### Other Equipment

9.5 T counterweight	<input checked="" type="checkbox"/>
Manual centralized lubrication system	<input checked="" type="checkbox"/>
Safety handrail	<input checked="" type="checkbox"/>

### Cabin

Cab	<input checked="" type="checkbox"/>
Deluxe Seats (Air suspension electric heated seats)	<input checked="" type="checkbox"/>
Cab front under-guard	<input type="checkbox"/>
Cab full-guard	<input checked="" type="checkbox"/>
AM/FM bluetooth radio	<input checked="" type="checkbox"/>
DAB bluetooth radio	<input type="checkbox"/>

### Undercarriage

Track 1: 600 mm double grouser track	<input checked="" type="checkbox"/>
Track 2: 600 mm triple grouser track	<input type="checkbox"/>

### Attachments

Breaking hammer 1: triangular breaking hammer	<input type="checkbox"/>
Breaking hammer 2: straight breaking hammer	<input type="checkbox"/>

### Hydraulics

Auxiliary piping (single/double-acting, switchable, high flow)	<input checked="" type="checkbox"/>
Auxiliary piping (double way, for rotating or tilting tool, low flow)	<input checked="" type="checkbox"/>
Quick coupler piping	<input checked="" type="checkbox"/>
Left electric proportional joystick	<input checked="" type="checkbox"/>
Right electric proportional joystick	<input checked="" type="checkbox"/>

Standard:   
 Optional:

### Electric

Rotating warning beacon	<input checked="" type="checkbox"/>
Travel alarm	<input checked="" type="checkbox"/>
Rearview camera	<input checked="" type="checkbox"/>
Display languages: Chinese, English, Russian, Portuguese, Spanish, French, Italian, German, Turkish, Norwegian	<input checked="" type="checkbox"/>

# Optimum Services, XCMG Guaranteed



XCMG-approved attachments



Genuine parts



Extension of warranty



Financial solutions



Maintenance contract



Telematics

## Professional Integrated Complete Solutions

The XCMG group has built a strong reputation based on the quality, reliability and durability of its construction machinery. What's more, XCMG has gradually established a service network to constantly provide its local integrated and highly efficient complete solutions for all customers.

## Full Range of Services Ready for you

In order to respond to your needs as fast as possible, XCMG experts are on their way to your job site from one of our facilities near you. A full range of services is available in order to reduce your total cost of ownership and increase your revenue.



XCMG Global Spare parts System



Mobile cranes



Excavators



Aerial work platforms



Wheel loaders



Road machinery

