

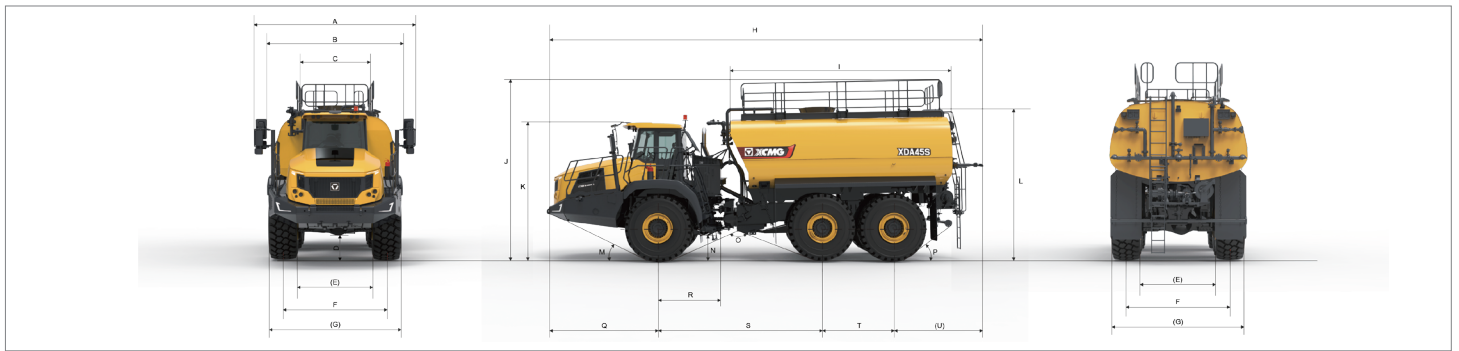
XDA45S

ARTICULATED WATERING TRUCK



- Rated Payload (kg): 34000
- Engine Rated Power (kW/r/min): 390/1600
- Tank Capacity (m³): 34

- It can achieve vehicle-speed following and automatic intermittent spraying on slopes, preventing safety accidents caused by excessive watering on the road surface. The watering system is equipped with functions such as shutdown upon water shortage, automatic unloading, and full-water alarm, which mitigate the risks of dry running and overpressure operation, effectively protecting the system components.
- It can realize four functions: rear horizontal spraying, vertical spraying, gravity-induced spraying, and water cannon spraying, with a maximum flow rate of 170 m³/hour. It is equipped with a fault diagnosis function to enhance maintenance efficiency.



Technical Specifications

Item Contents	Unit	Parameter	
Dimension Parameters			
Overall length	mm	12100	
Overall width	mm	3540	
Overall height	mm	5150(Including top guardrail) /4150(Does not include a top guardrail)	
Wheelbase	mm	4450+1940	
Wheel center distance	Front wheel mm	2700	
	Rear wheel mm	2700	
Weight Parameters			
Gross weight	kg	69000	
Rated payload	kg	34000	
Non-load weight	kg	35000	
Weight Distributions			
Non-load operating weight	Front axle	kg	17500 (50%)
	Rear axle	kg	17500 (50%)
Loaded weight	Front axle	kg	20700(30%)
	Rear axle	kg	48300(70%)
Power Parameters			
Engine model	Configuration 1	/	Benz OM471(T0)
	Configuration 2	/	Benz OM471(Euro V/T4)
Engine rated power	Configuration 1	kW/r/min	390/1600
	Configuration 2	kW/r/min	/
Maximum torque	Configuration 1	Nm/r/min	2600/1300
	Configuration 2	Nm/r/min	/
Drivetrain	/	/	6×6
Tires	/	/	29.5R25
Travel Parameters			
Maximum travel speed	km/h	47	
Minimum turning diameter	mm	9275	
Maximum steering angle	°	±42	
Minimum ground clearance	mm	530	
Working Parameters			
Spraying width	m	27	
Maximum flow rate of pump	m³/h	170	
Maximum head of pump	m	90	

Item Contents	Unit	Parameter
Service Refill Capacities		
Fuel tank	L	500
Hydraulic oil tank	L	250
Brake cooling system	L	200
Cooling system	L	100
Gear oil	L	40
DEF/AdBlue	L	40
Transmission	L	48
Axle	L	165
Transfer case	L	11
Tank Capacity		
Paperback	m³	34
Optional Equipment		
Automatic fire extinguishing system	/	<input type="radio"/>
Automatic centralized lubrication system	/	<input type="radio"/>
Driver cab pressurization system	/	<input type="radio"/>
Quick fuel filling system	/	<input type="radio"/>
Centralized oil filling and sampling system	/	<input type="radio"/>

