

Address: No 169,Heping Avenue,
Xuzhou City,Jiangsu Province,
R,P,CHINA

Postal Code: 221000

Hot Line: 400-110-9999
0516-8311 3333

XCMG
徐工机械



四高一筹 得新应手

More Advanced
G-Series
—
Innovative
And Customized
Technologie

- 铲斗容量: 2.4-5.2m³
- 操作重量: 70000kg
- 额定功率: 340KW/2100rpm



XE700GA

地址:
江苏省徐州市和平大道169号

WWW.XCMG.COM

全国统一客服热线:
400-110-9999 / 0516-8311 3333

邮编:
221000

微信二维码



视频号二维码



本手册最终解释权归徐州徐工机械有限公司所有。



Leading China
IV Product

Value-Maintaining
XCMG Product

国四先锋·保值徐工

产品标杆到市场引领

XE 700GA

XE 700GA

Product Benchmark To
Market Leader

作为矿用挖掘机的先驱者，
徐工矿机一直以前沿的产品与科技引领行业发展，
为客户提供创新的产品及解决方案。

低投入
Low Investment

低排放
Low Emission

高产出
High Yield

高性能
High Performance



As a pioneer of mining excavators, XCMG Mining Machinery has been leading the industry in terms of products and technology, providing customers with innovative products and solutions.

01 技术领先 低排放 低油耗

low emissions
low fuel consumption

Leading Technology



60000*
每年节省

50%
维保周期提升

15%
保养费用节省

① 在行业内率先实现发动机低排放、低油耗、低噪音的智能高端技术。重载作业效率提升 5%，油耗降低 6%，维保费用降低 5%。每年可节省 6 万元。

XGA700GA is the first in the industry to use intelligent high-tech of low engine emission, low fuel consumption, and low noise. The heavy-duty operation efficiency increased by 5%, fuel consumption decreased by 6%, and maintenance cost decreased by 5%. RMB 60,000 can be saved every year.



② 采用徐工“超低灰分技术发动机润滑油”，动力系统维保周期延长一倍，动力系统可提供 1000h 维保方案。XE700GA 保养费用（液压油、燃油滤芯、机油滤芯及液压吸油滤芯）低于同级 15% 以上。

With XCMG's "super-low soot filtering technology", the engine system maintenance cycle is doubled. The engine system provides a maintenance plan of 1000 h. The XE700GA maintenance cost (hydraulic oil, fuel filter element, engine oil filter element, and hydraulic oil suction filter element) is more than 15% lower than that of the same level.



02 动力领先

高效率 高强度

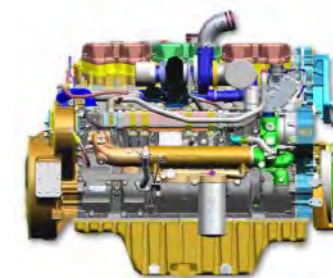
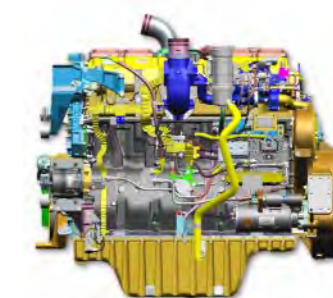
High Efficiency
And High Strength

Leading Power



- ① 采用矿山专用非道路发动机，提供 340kW 的平顺高效动力。高性能独立散热系统，适用 52°C 高温环境，9.5kW 大功率启动马达、低温大容量电瓶，冷启动能力达到 -25°C，采用高原自适应技术，高原施工如履平地。

The off-road engine dedicated for mines is used to provide a smooth and efficient power of 340kW. With the high-performance independent cooling system, it is suitable for 52°C high temperature environment. With high-power starting motor of 9.5kW and low temperature large capacity battery, it can be started under the temperature of -25°C. With high-altitude self-adaptive technology, it works like on the sea-level when on the high-altitude ground.



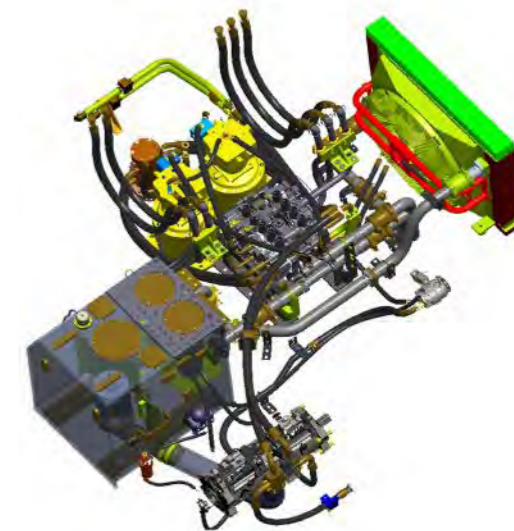
- ② 采用完全独立散热，风扇转速根据温度自动调节，具备一键反转功能，散热器维护方便快捷，行业首次使用风扇卸荷功能，助力系统快速预热。

With the independent cooling system, the fan speed is automatically adjusted according to the temperature. The one-click reverse function makes it easier and faster for radiator maintenance. The fan unloading function is used in the industry for the first time to help the system warm up quickly.



- ③ 缸体、凸轮轴、曲轴及连杆等部位进行优化，延长大修时间；采用适应中国市场的电控单体泵燃油系统，有效降低发动机故障率；防尘能力强，降低电气件故障及发动机拉缸的风险。

The cylinder block, camshaft, crankshaft and linkage are optimized to increase the overhaul time. The electronic unit-pump fuel system customized to the Chinese market is used to effectively reduce the engine failure rate. The machine, with strong dustproof ability, can reduce risks of electrical component faults and engine cylinder scuffing.



03

品质领先 优细节 优关键

Excellent Details
And Key Parts

Leading Quality

- ① 采用大通径液压主阀，系统压损小，功率利用率高，油耗低。大扭矩回转马达，同级别最大的回转扭矩，回转启动速度快。大排量主泵，系统流量大，作业速度快。

large-diameter hydraulic main valve helps realized small system pressure loss, high power utilization, and low fuel consumption. High-torque swing motor with the maximum swing torque at the same level helps increase the swing starting speed. large-displacement main pump allows large system flow and helps realized a high operation speed.

LIGHT
轻量化设计

- ② 工作装置采用箱体结构轻量化设计，关键部位为整体铸件结构，大幅降低焊接应力集中及缺陷，保证结构件足够的强度和刚度，可满足重载挖掘和采矿需要；

With the box structure designed for lightweight working device and integral casting for key structural parts, the welding stress concentration and defects can be greatly reduced to ensure sufficient strength and stiffness of the structural parts and to meet requirements of heavy-duty excavation and mining;

85%⁺
应力水平降低

- ③ 动臂、斗杆采用焊后整体热处理去应力工艺，应力水平降低 85%；

The boom and arm use the irdegral heat treatment technology, so the stress level is reduced by 85% ;

50%⁺
提高承载能力

- ④ 回转平台、动臂、斗杆采用加强型结构，较上一代产品提高承载能力 50%；

The structures of main frame, boom, and arm are reinforced, so the loading capacity is 50% higher than that of the previous generation machines;

15%⁺
承载能力提升

- ⑤ 采用矿用重载底盘，重型四轮一带，加强纵梁、H架承载能力等，承载能力提升 15%。

The loading capacity is improved by 15% with heavy-duty mining chassis and heavy undercarriage, and strengthening of loading capacity of track frame and H-frame.



04 操控领先

超舒适 超静音

Ultra Comfortable
And Ultra-quiet

Leading Control

- ① 采用内置减振器，矿山施工抗震能力更佳。空气悬浮座椅，标配电子辅助加热，扶手与座椅同步高度调整，降低疲劳，提高舒适性。全新升级的大功率冷暖空调，配合多出风口设计，可实现驾驶室快速制冷制热和玻璃除霜。

The built-in shock absorbers makes the mining operation more vibration resistant. Air suspension seats are equipped with standard electronic heating. Armrests are adjusted synchronously with the seats in height, reducing the driver's fatigue and strengthening driver's comfort. Newly upgraded high-power cooling and heating air conditioner, combined with the design of multiple air outlets, can realize rapid cooling and heating glass defrosting in the cab.

70%⁺
密封性提高

- ② 采用全新设计的正压驾驶室，空间大，安全性高。密封性较同级别提高70%，有效隔离灰尘，大幅降低驾驶室内噪音，驾驶室噪音低至69dB。

In the newly designed positive-pressure cab, the space is larger, the safety is higher, and the leakproofness is improved by 70%, compared with the same-level products. Therefore, the dust can be effectively prevented and noise in the cab can be greatly reduced. Noise in the cab can be reduced to 69dB.

05 功能领先

智能化 多元化

Intelligentization
And Diversification

Leading Functions

控制中心

远程操作

AI感知

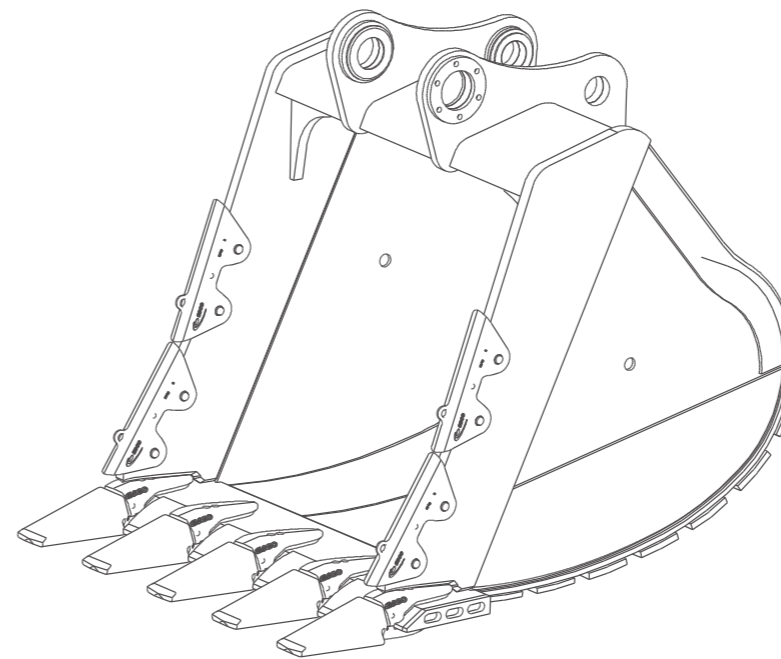
现场信息

5G信号



① 基于5G实现高速率、低延时控制在10ms，XE700GA打破时空限制，还原真实场景，实现远程操控。

Based on 5G technology, data communication can realize high speed and low delay within 10ms. The XE700GA breaks the time and space limit, restores the real scene, and realizes remote control.



② XE700GA 标配 4.6m³ 加强型超强铲斗，配有耐磨护角和双层耐磨板。可选配 4.2m³ 岩石型、5.2m³ 土方型等多种规格铲斗，可加装松土器、岩石臂、破碎锤、松土斗等多种类型，满足矿山剥离、煤炭采装、土方挖掘等多种作业工况。

XE700GA is equipped with the standard super bucket with capacity of 4.6m³, wear-resistant corner guards, and double-layer wear-resistant plates. buckets of 4.2m³, earthwork bucket of 5.2m³, etc. are for option. They can be equipped with rippers, rock arms, hammers, loose-soil buckets, etc. to meet various operating conditions such as mine stripping, coal mining and loading, and earthwork excavation.

③ 可选择 Power/Smart 工作模式。Power 重载模式：效率高，油耗略微上升；Smart 正常模式：效率略低，油耗更理想；还可以灵活设置液压功率，满足不同工况需求。

Power/Smart working mode can be selected. Power heavy-duty mode: high efficiency, slightly increased fuel consumption; Smart mode: slightly lower efficiency and better fuel consumption; the hydraulic power can also be flexibly set to meet the requirements of different working conditions.





Promise To You

XCMG MINING MACHINERY'S COMMITMENT TO YOU

徐工矿机对您的承诺

“全心全域全服务”这是徐工矿机的服务理念。每台徐工矿用挖掘机都将获得全面的保护。同时，我们提醒您若在质量保证期内及保证期后需要维修时，可以联系驻矿服务工程师或徐工矿机特约

售后服务中心，因为只有这样才能得到徐工矿机的纯正零部件和全面良好的维修保养，并得到最满意的服务。

“Supplying all-round services in all regions with the whole heart”. This is the service concept of XCMG Mining Machinery. Every XCMG mining excavator will be fully protected. At the same time, we remind you that if you need repair service during and after the warranty period, you can

contact the service engineers stationed at the mine or the XCMG Mining Machinery special after-sales service centre, and only in this way can you get genuine XCMG Mining Machinery parts and comprehensive and good maintenance and repair, and the most satisfactory service.

XE700GA 液压挖掘机

技术参数

设备名称	XE700GA液压挖掘机		
发动机			
发动机品牌	珀金斯		
发动机型号	2406EA-E13TA		
排放等级	国四		
52°C高温环境冷却组件	√		
-20°C冷启动能力	√		
-35°C超低温启动能力		○	
5000m海拔高度作业能力		○	
带水位指示传感器的油水分离器	√		
带加热器油水分离器 (24V)			x
燃油油标	√		
燃油呼吸阀	√		
油水快放装置	√		
燃油加油泵 50L/min			x
燃油快速加注系统		○	
径向密封空气滤清器	√		
空气压差指示器	√		
带反吹功能的独立散热模块	√		
散热器防尘网	√		
机油快速加注系统			x
油品采样系统	√		
发动机低温加热系统; 冷却液加热器 (燃油式)		○	
自动怠速	√		
开式曲轴箱通风 (OCV) 过滤器			x
最高可使用B20级生物柴油			x
液压系统			
动臂/斗杆流量再生	√		
辅助液阀	√		
反向回转阻尼阀	√		
自动回转停车制动器	√		
液压缓冲阀		○	
直行液压回路	√		
动臂优先阀	√		
回转逻辑阀	√		
回转防摆阀	√		
备用阀片	√		
闭式回转系统			x
液压油 Autran 4 10	√		
液压油 Spirax S4 CX 10W/Mobiltrans HD 10W		○	
液压管路: 破碎锤		○	
液压管路: 拇指钳及油缸		○	
液压管路: 防爆阀管路及油缸		○	
液压管路: 快速连接器			x
液压管路: 液压剪		○	
液压管路: 液压振动夯/高频破碎器		○	
液压管路: 液压抓具		○	
ISO/JIS操作方式切换		○	
液压油快速加注系统			x
自动液压油预热			x
仪表压力监控	√		
电气系统			
蓄电池 (4 x950 CCA)	√		
蓄电池断路器	√		
95 A 直流发电机	√		
9.5 kW 起动机	√		
行走报警器	√		
24V直流电源接口	√		
12V直流电源接口	√		
摄像头	√		
5V USB接口	√		
照明灯			
左右两侧动臂工作灯	√		
安装在储物箱上的右侧工作灯	√		
驾驶室内部照明	√		
驾驶室顶安装的前工作灯	√		
驾驶室顶安装的后工作灯	√		
泵室检修灯	√		
驾驶室与内饰			
增压驾驶室	√		
配备辅助装置的可开启前挡风玻璃	√		
按 70/30 比例分割的前挡风玻璃	√		
双层夹胶挡风玻璃和其他钢化窗户	√		
可滑动的车门上窗	√		
遮阳帘	√		
顶部天窗	√		
雨刮器	√		
杯架/文件袋	√		
冷暖储物箱	√		
衣帽钩	√		
可清洗地板垫	√		
完全可调的空气悬浮座椅	√		
可调节座位扶手	√		
安全带 (51 mm [2"] 宽)	√		

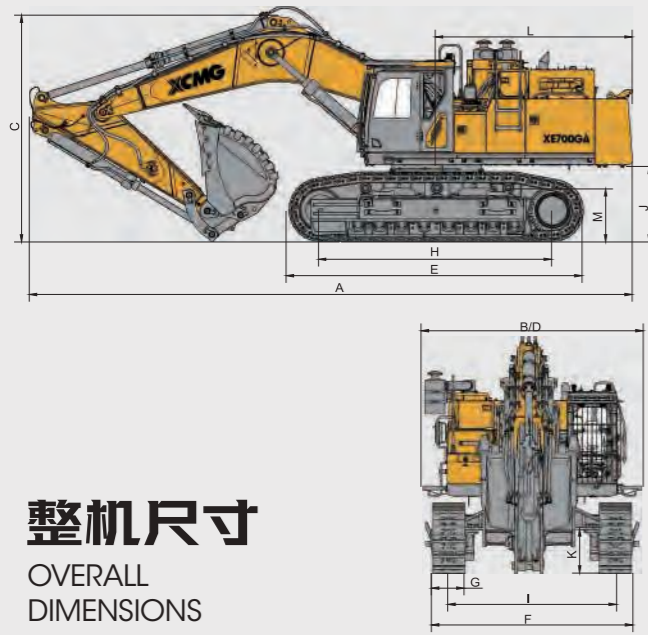
Technical
Parameter

XE700GA 液压挖掘机

技术参数

设备名称	XE700GA液压挖掘机		
空调系统			
带除霜器的双向出风空调 (自动型) (加压功能)	√		
操纵手柄	√		
装有可拆卸手动操纵杆的行驶控制踏板	√		
可显示警告信息、滤清器/液体更换信息和工作小时数的彩色液晶显示屏	√		
驾驶员登入管理系统 (人脸识别、密码输入)	√		
高低速换挡	√		
一键增压模式	√		
工作辅具预留开关		○	
无线电收音机	√		
两个立体声扬声器	√		
灭火器		○	
安全与防护配置			
自动灭火系统		○	
落物防护结构 (FOPS)	√		
驾驶室前上防护网		○	
驾驶室前下防护网	√		
后视监控摄像头	√		
360°全景影像系统		○	
行为监控系统		○	
驾驶室门锁和各舱室锁	√		
发动机和油泵室之间的隔离板	√		
紧急停机开关	√		
后窗紧急出口	√		
动臂、斗杆保持阀	√		
动臂、斗杆管路防爆阀		○	
警报喇叭	√		
过热报警	√		
旋转报警灯	√		
安全扶手和踏板	√		
防滑板/防滑贴	√		
液压安全锁定杆	√		
紧急逃生锤	√		
左右后视镜	√		
底盘系统与护罩			
加长底盘	√		
全长度履带护轨器	√		
保护装置套件: 底盘底部封板、行走马达封板	√		
底座牵引环	√		
650 mm (24") 双筋履带板	√		
750 mm (28") 双筋履带板		○	
900 mm (31") 双筋履带板		○	
电动爬梯/扶梯			x
工作装置			
动臂 6.6m	√		
斗杆 2.9m	√		
4.2m³岩石斗	√		
动臂 6.3m		○	
斗杆 2.5m		○	
动臂7.3m		○	
斗杆 3.5m		○	
2.4m³松土斗		○	
2.8m³岩石斗		○	
3.1m³岩石斗		○	
3.5m³岩石斗		○	
3.8 m³岩石斗		○	
4.6 m³加强斗		○	
5.2 m³土方斗		○	
快速连接器			x
破碎锤		○	
液压拇指钳		○	
松土器		○	
振动夯		○	
液压剪		○	
抓具		○	
高频破碎器		○	
贝壳斗		○	
梅花抓斗		○	
筛型斗		○	
岩石臂		○	
润滑系统			
电动润滑系统(进口林肯)		○	
电动润滑系统(国产)		○	
斗杆集中	√		
集中加注系统			x
控制技术			
XEICS智能控制系统	√		
EST检测设备		○	
蓝牙系统	√		
诊断记录仪	√		
重载/经济模式	√		
数据链路插座	√		
配重			
11.3 t配重	√		

Technical
Parameter



整机尺寸

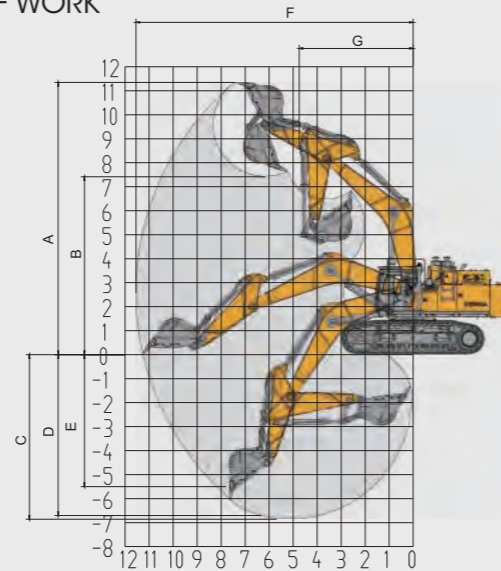
OVERALL
DIMENSIONS

主要参数 MAIN SPECIFICATIONS

型号 Model	单位 UOM	参数 Parameters
操作重量 Operation Weight	Kg	70000
铲斗容量 Bucket Capacity	m ³	2.4-5.2
动臂长度 Boom length	mm	6600
斗杆长度 Arm length	mm	2900
发动机 Engine		
发动机型号 Model	/	Perkins2406EA
直喷 Direct injection	/	√
4冲程 Four strokes	/	√
水冷 Water cooling	/	√
涡轮增压 Turbo-charging	/	√
空空中冷 Air to air intercooler	/	√
缸数 No. of cylinders	/	6
发动机输出功率 Engine output power	kW/rpm	340/2100
最大扭矩/转速 Torque/speed	N.m/rpm	2082/1400
排量 Displacement	L	12.5
主要性能 Main performance		
行驶速度(高/低) Travel speed (H/L)	km/h	4.2/3.0
回转速度 Rotating speed	r/min	7
爬坡能力 Gradeability	°	35
接地比压 Ground pressure	kPa	101.4
铲斗挖掘力 Bucket digging force	kN	363
斗杆挖掘力 Arm digging force	kN	300
最大牵引力 Maximum traction	kN	485
液压系统 Hydraulic system		
主泵 Main pump	/	2个柱塞泵
主泵额定流量 Rated flow of main pump	L/min	2×450
主安全阀压力 Pressure of prime valve	MPa	31.4/34.3
行走系统压力 Pressure of travel system	MPa	34.3
回转系统压力 Pressure of swing system	MPa	28.5
先导系统压力 Pressure of pilot system	MPa	3.9
油类容量 Oil capacity		
燃油箱容量 Fuel tank capacity	L	825
液压油箱容量 Hydraulic tank capacity	L	500
发动机油容量 Engine oil capacity	L	45

作业范围

SCOPE
OF WORK



整机尺寸/作业范围

型号 Model	单位 UOM	参数 Parameters
外形尺寸 Appearance size		
A 总长 Overall length	mm	12130
B 总宽 Overall width	mm	4410
C 总高 Overall height	mm	4700
D 转台宽度 Width of platform	mm	3470
E 履带长度 Length of crawler	mm	5875
F 底盘总宽 Overall width of chassis	mm	4370
G 标准履带板宽度 Width of crawler	mm	650
H 履带轴距 Track length on ground	mm	4700
I 轨距 Crawler gauge	mm	2750/3410
J 配重离地间隙 Clearance under counterweight	mm	1565
K 最低离地间隙 Min. ground clearance	mm	853
L 尾部回转半径 Min. tail swing radius	mm	4090
M 履带高度 Height of crawler	mm	1420
工作范围 Working scope		
A 最大挖掘高度 Max. digging height	mm	11350
B 最大卸载高度 Max. dumping height	mm	7370
C 最大挖掘深度 Max. digging depth	mm	6900
D 8英尺水平面挖掘深度 Excavation depth of 8 feet level	mm	6750
E 最大垂直挖掘深度 Max. vertical wall digging depth	mm	5500
F 最大挖掘半径 Max. digging reach	mm	11580
G 最小回转半径 Min. swing radius	mm	4750
标配配置 Standard configuration		
动臂长度 Boom length	mm	6600
斗杆长度 Arm length	mm	2900
铲斗斗容 Bucket capacity	m ³	4.2 (普通岩石斗)
		4.2 (ordinary rock bucket)
选装配置 Optional configuration		
动臂长度 Boom length	mm	7300
斗杆长度 Arm length	mm	3500

技术更新及变更，恕不另行通知

XE 700GA 以市场和客户需求为导向，

从产品设计到制造，
实现了从性能、可靠性
到使用成本的最佳平衡，

凭借先进的技术理念、
良好的产品质量以及完善的售后服务，

徐工矿机是您的最佳之选。

The XE 700GA, oriented by the market and customer needs,

achieves the best balance between performance, reliability,
and use cost from product design to manufacturing.

Relying on advanced technical concepts, high product
quality, and considerate after-sales services,

XCMG Mining Machinery is your best choice.

CAUTIONS 注意事项

◎ 润滑油（黄油）必须符合国标 GB/T 7323-2019 的标准，其它国标均不合格。

◎ 使用含硫量低于 15PPM 的燃油（需符合 GB19147 国 VI 标准）

◎ 低灰分机油（CK-4 级）

◎ 车用尿素溶液需符合 GB 29518

◎ 当 DPF 需要清理时，请咨询您的徐工矿业机械授权经销商；必须先执行特定的再生功能，然后拆下将要清理的 DPF，重置发动机 ECM 中的灰尘监控系统。严禁用户私自清理 DPF。

◎ The grease must conform to the national standard GB/T 7323-2019, and that meeting other national standards is unqualified.

◎ Fuel with sulfur content lower than 15PPM

(in accordance with China National VI standard of GB19147) is used.

◎ Oil with low ash content (CK-4 level)

◎ DEF shall conform to GB 29518.

◎ When DPF needs to be cleaned, please consult your dealer authorized by XCMG Mining Machinery. The specific regeneration function must be performed first, then DPF to be cleaned must be removed, and the dust monitoring system in the engine ECM must be reset. Users are not allowed to clean DPF without permission.

说明：

1. 本宣传册的图形和信息反映了当时部分机型的技术特点与配置标准，现有信息和数据源于标准使用情况测试。上述数据与信息仅供参考，请以实物为准。
2. 本宣传册仅供参考，不具有合同效力。欲了解详细资料，请与所在地徐工矿机经销商联系。
3. 未经徐州徐工矿业机械有限公司授权，不得复制本宣传册内容。

徐州徐工矿业机械有限公司保留对该宣传册的解释权和修改权。

2023 年 3 月 发行

EXPLANATION:

1. The graphics and information in this brochure reflect the technical characteristics and configuration standards of some models at that time. The existing information and data are derived from the standard use test. The above data and information are for reference only. Please refer to the real object.
2. This brochure is for reference only and has no contractual effect. For more information, please contact the local XCMG mining machine dealer.
3. Without the authorization of Xuzhou XCMG Mining Machinery Co. Ltd., the contents of this brochure does not allow to copy.

Xuzhou XCMG Mining Machinery Co. Ltd. reserves the right to interpret and modify the brochure.

Issued in March 2023