

CASE STUDY 2.0

REBUILDING LOS ANGELES

*A Visionary
Catalog for
Resilient and
Sustainable
Homes*



TABLE OF CONTENTS

INTRODUCTION	
COMPANY / FIRM SUMMARY	
PROJECT NARRATIVE	
PROJECT FACT SHEET PARCEL INFO DIAGRAMS	
DESIGN FEATURES SUMMARY	
PLANS	
SITE PLAN	
GROUND LEVEL	
SECOND LEVEL	
ROOF	
SECTIONS	
LONGITUDE	
LATITUDE	
ELEVATIONS	
NORTH	
SOUTH	
EAST	
WEST	
RENDERINGS	
INTERIOR	
EXTERIOR	
VIGNETTES	

INTRODUCTION

RHG A+D Architecture + Design



RHG Architecture + Design is committed to crafting spaces that engage on every level—emotionally, physically, and spiritually. We take a holistic approach to design, considering not only aesthetics but also how a space makes people feel, fostering a sense of community and belonging. Our projects achieve a harmonious balance of form and purpose, creating environments that enhance everyday life and celebrate extraordinary moments.

Our design philosophy explores the synergy between humanity, nature, and architecture, resulting in spaces that promote balance and connection. From serene retreats to vibrant communal settings, our work embodies a quiet confidence and a deep respect for our clients' visions. We believe that well-designed spaces have the power to support well-being and nurture meaningful connections, both with oneself and with others.

At RHG Architecture + Design, we are passionate about the transformative power of design and its ability to enrich daily life. Our collaborative process, rooted in sustainability and authenticity, allows us to create versatile spaces that are timeless, adaptable, and sensitive to the world around them—including several LEED-accredited buildings. We support initiatives that encourage creativity, healing, and social responsibility, working closely with clients and partners to deliver intuitive solutions that reflect a shared vision for an inspiring world.

Our diverse portfolio includes residential, hospitality, wellness, spiritual, and commercial projects. Each project is a testament to our belief that Design is Spiritual™ and the transformative potential of thoughtful, intentional design. Our award-winning work has been featured in Architectural Digest, Forbes, and Interiors and has earned numerous accolades for its innovation and impact.



PROJECT NARRATIVE



Home, a place that supports easeful nurturing living. A place to feel grounded, rejuvenated and a sense of calm. In this design, we created spaces that guide toward physical, emotional, and spiritual wellbeing. Our design approach is holistic and intentionally creates opportunities to connect with each other, nature, and oneself.

KINHOOD is 3006 sq ft with 3 bedrooms, a sanctuary space, 3 1/2 baths, home office, laundry, family room, dining room, kitchen and a two-car outdoor garage with car charger. The property includes a water feature, cold plunge, covered patio and fire-resistant landscaping.

Our design invites you through a sequence of experiences beginning at the sidewalk. The pathway to the front door is flanked with fire resistant flowering Birds of Paradise which symbolize freedom and transformation. Breeze block rests behind creating an elegant pattern wall of the open garage. As you approach the semi covered entry you are received and invited to ‘find the way’ as the entry door is perpendicular to the path. The foyer begins the exploration of the interior where design concepts such as framed views and compression and release are implemented. The 9’-0” ceiling in the foyer creates a sense of arrival, windows align front to rear of the home terminating at a cairn formation (stacked rocks) setting a serene tone. The hallways lower ceiling height (8’-6”) suggests a nesting or gentle compression, surrounding spaces expand back to 9’-0”. Interior breeze blocks between the hall and living room simultaneously create a sense of connection and separation. Filtered light patterns dance throughout the first floor created by an exterior shading element. The living room, dining room, and kitchen are connected to a covered patio space with large sliding doors, creating a seamless connection between the interior and exterior spaces.

The kitchen invites connection both in cooking and conversation through ample counter space, storage and peninsula seating. An herb garden is set on the property to support home cooking and the connection with growing and harvesting, the root of nurturing meals. The adjacent dining space provides for easeful entertaining. A water feature with trickling water sits outside the dining area calms the nervous system.

A first-floor sanctuary space can be set up as a meditation/yoga room, a guest suite with full bathroom, or with a few modifications even an ADU with separate entry.

The partially open stair leads to the second floor where a moon-shaped skylight evokes the connection with nature. The two standard bedrooms share a hall bathroom. Exterior screens above the windows reduce the call for air conditioning. The primary suite, designed as its own oasis, located at the back of the property, features a 10’-0” ceiling. By separating the sleeping area from the rest of the second floor the space is private and quiet, a true luxury. Thoughtfully placed floor to ceiling windows allow a connection with the outside while retaining privacy. The primary bathroom features a double vanity, skylight, spacious shower with an optional steam feature.

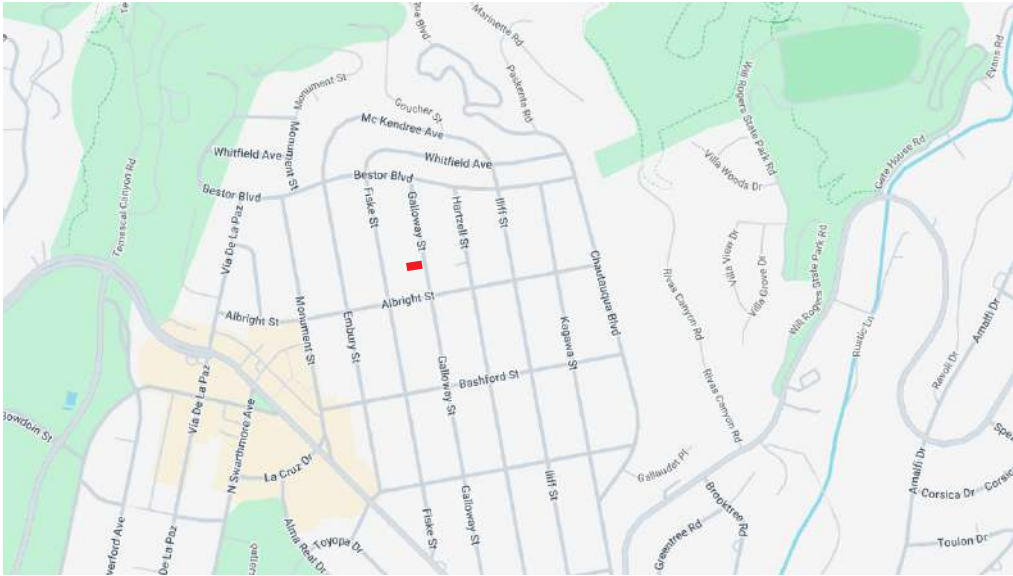
The fire-resistant exterior finishes include stucco, large-scale terra cotta tiles, Arbor Wood with with SaferWood Thermex Class A rated screening, aluminum clad windows, clay breeze blocks, and expressed steel with a rated fire coating.

The landscape and hardscape include the use of river stone, natural patina metal, and pavers that are both fire resistant and hold a connection to natural elements in texture and tone. Modern structural elements are highlighted and create unique outdoor spaces that seamlessly connect and enhance the interior.

KINHOOD House is designed to be a sanctuary.

PARCEL INFO & DIAGRAMS

ADDRESS: 1051 N GALLOWAY STREET

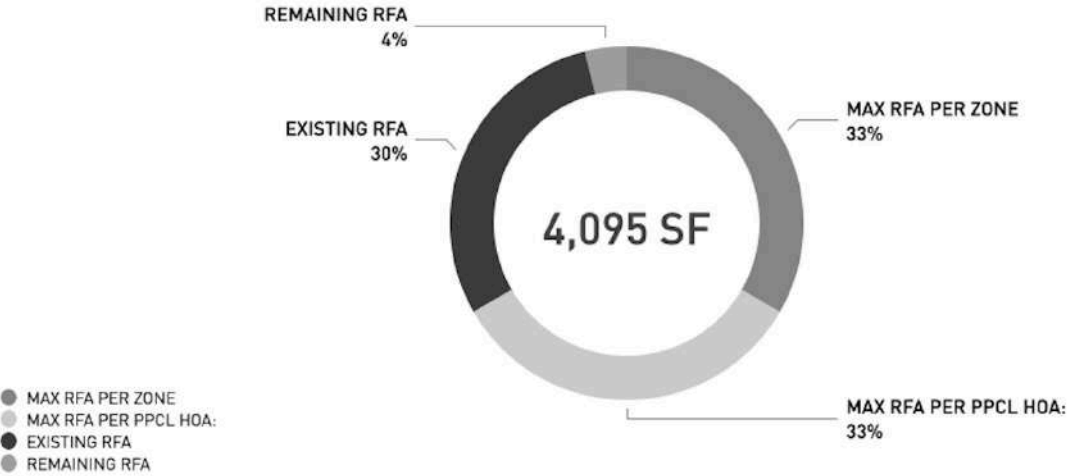


BUILDING AREAS

BUILDING AREAS	
RESIDENTIAL FLOOR AREA	
FLOOR	AREA SQ.FT. 3006
LEVEL 1	1521 SF
LEVEL 2	1485 SF
GARAGE EXEMPTION	400 SF
MAXIMUM ALLOWED	3120 SF MAX WITH 20% BONUS 2ND FLR MAX 1514 SF

FLOOR AREA SUMMARY

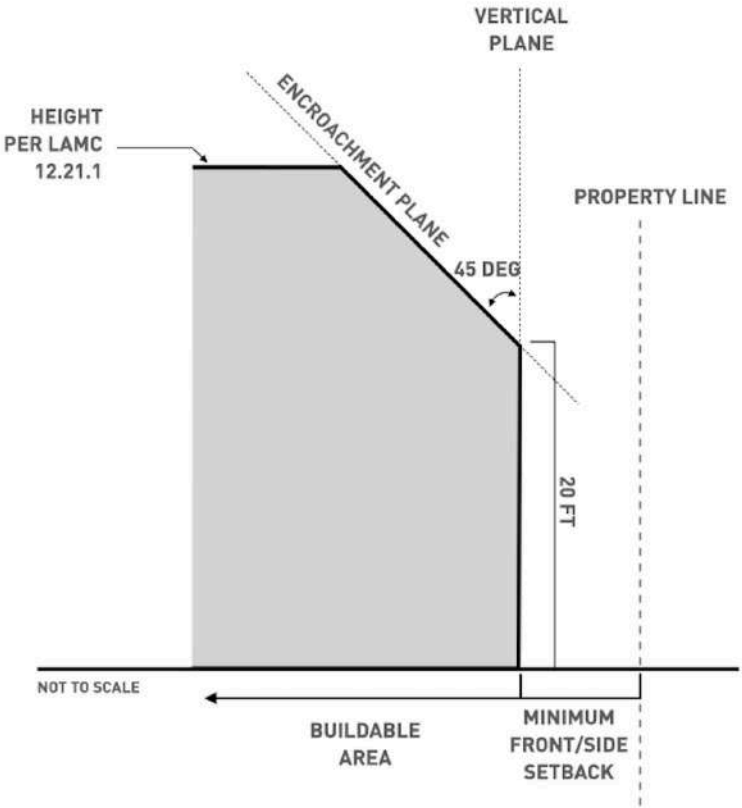
FLOOR AREA SUMMARY



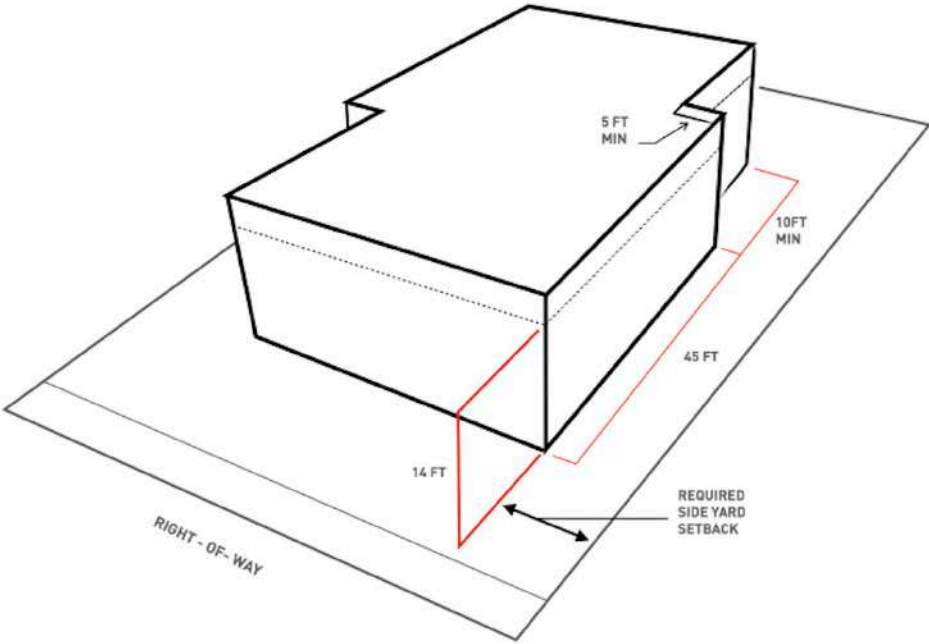
PROJECT DATA

PROJECT DATA	
SITE ADDRESS:	1051 GALLOWAY STREET
LOT AREA:	5,200 SF
ZONED:	R1-V1
MAXIMUM ENVELOPE HEIGHT:	28'-0" MAX ABOVE GRADE
L.A.M.C. 12.21 C.10 [D][1][I]:	33'-0" MAX ABOVE GRADE FOR VARIED ROOFS
SETBACK REQUIREMENTS:	FRONT YARD: 15'-4"
	REAR YARD: 15'-0"
	SIDE YARD: 6'-0"
PARKING REQUIREMENTS:	2 COVERED SPACES
LOT COVERAGE:	Maximum 2080 SF
PER 12.21 C.10[E] F THE LMAC	
BUILDING AREAS	3120 SF MAX WITH 20% BONUS 2ND FLR MAX 1514

BUILDING HEIGHT DIAGRAM



BUILDING ENVELOPE AND SETBACK DIAGRAM



DESIGN FEATURES



FIRE RESISTANCE

The design of this home is Passive House informed; designing a home with simple shapes, specifically lacking eaves, vents, or small crevices. The design does not give embers a chance to spark or enter the structure. We also selected fire resistant materials to finish the exterior, and a defensive landscape design.



ROOFING

A modern membrane roofing system, which is well insulated to create a barrier from fire that might ignite loose matter on the roof and allow it to extinguish itself without harming entering or igniting the structure. We have also selected a light colored finish, which reflects excess heat from the surface of the roof.



BUILDING SIDING

The exterior siding is stucco and large-format Terracotta tile, both of which are fire and heat resistant.



WINDOWS & DOORS

All exterior glazing is aluminum clad wood and tempered, dual-paned to help prevent heat from radiating through, and give windows a higher likelihood of surviving a fire.



DEFENSIBLE SPACE INTEGRATION

All area within 5’ of the home is considered defensible space and is hardscaped in order to be ember resistant. After that 5’ area, there is a lean and thoughtful greenspace. There is a sightline through the entire home on the first floor, terminating at a harmonious rock stack in the back yard.



VENTS

The design of this home does not include an attic, and the building envelope is air tight in order to prevent smoke infiltration and smoke damage. Vents and openings are minimal, but any necessary vents are to be properly capped and sealed with fire resistant materials.



EMBER-RESISTANT FEATURES

Lack of eaves, vents, and soild overhangs, as well as thoughtfully designed landscape, gives embers few opportunities to land and catch fire.



SUSTAINABILITY

Our firm aims to select only low and zero VOC materials, and all materials in this design aim to resist burning, but if they do catch fire, they burn slowly and as cleanly as possible, so that the damage is minimized to the home, the land, and the air. This also means that future efforts to rebuild will be much safer for all involved parties.



DESIGN QUALITIES

Our design supports wonder and well being through a sequence of experiences and easeful flow while holding a constant connection with nature. Framed views, varying ceiling heights, artisanal and mindful materials create a home that supports family and the environment even as time goes on.



CONSTRUCTION METHODOLOGY

The foundation is slab on grade, with walls built from a panelized framing system that reduces waste, saves construction time, and is delivered as a kit of parts. It is more energy efficient, produces a quieter interior, and reduces toxic off gassing. Floors and roofs are conventionally wood framed. Insulation is blown-in cellulose.



EFFICENCY

Our design is informed by Passive House Principles, which have a dual effect of being super energy efficient, as well as being inherently fire resistant. The tight exterior envelope means that the interior space easily stays at a comfortable temperature while using minimal HVAC throughout the year. Thoughtfully placed windows with shading elements allow for connection to the outdoors, as well as daylighting, without taking on excess heat.



STYLE FEATURES

Our California Modern home includes elements and pays homage to Richard Neutra while including concepts used by Frank Lloyd Wright. Full height sliding windows blur the line between inside and out, expressed steel structural elements that become part of the aesthetic all lean toward Neutra. Framed views, the use of breeze blocks as screening elements, and the concept of louvers and higher ceilings to evoke wonder relate to Frank Lloyd Wright. The blend of philosophies creates a unique and special experience.



ADDITIONAL SPECIAL FEATURES

Our design includes a covered patio space, with large sliding glass doors connecting to it from the living room, dining room, and kitchen. During good weather, this space is a wonderful and seamless way to connect the indoors and the landscape.



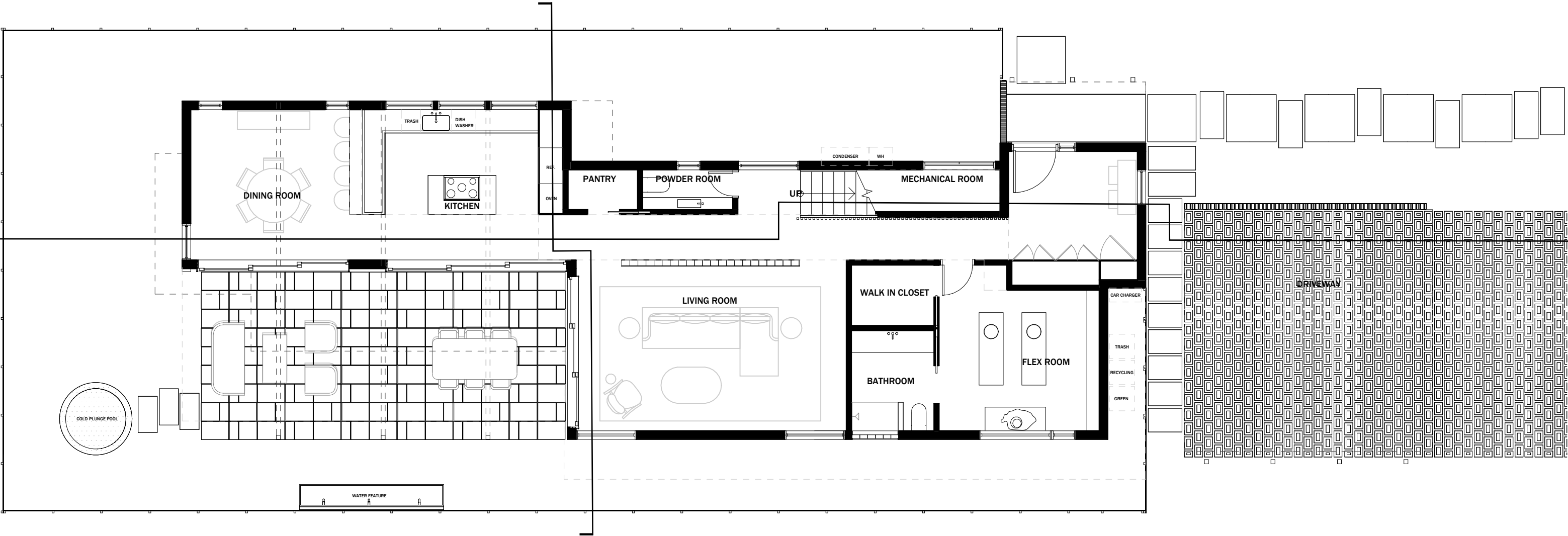
CUSTOMIZATION POTENTIAL

The first floor includes a “flex space” which is large enough to act as a garage, a sanctuary space, a studio with a bathroom, a generous guest room, or a suite for a family member who would rather not use the stairs. This flex space could potentially have a separate entrance.

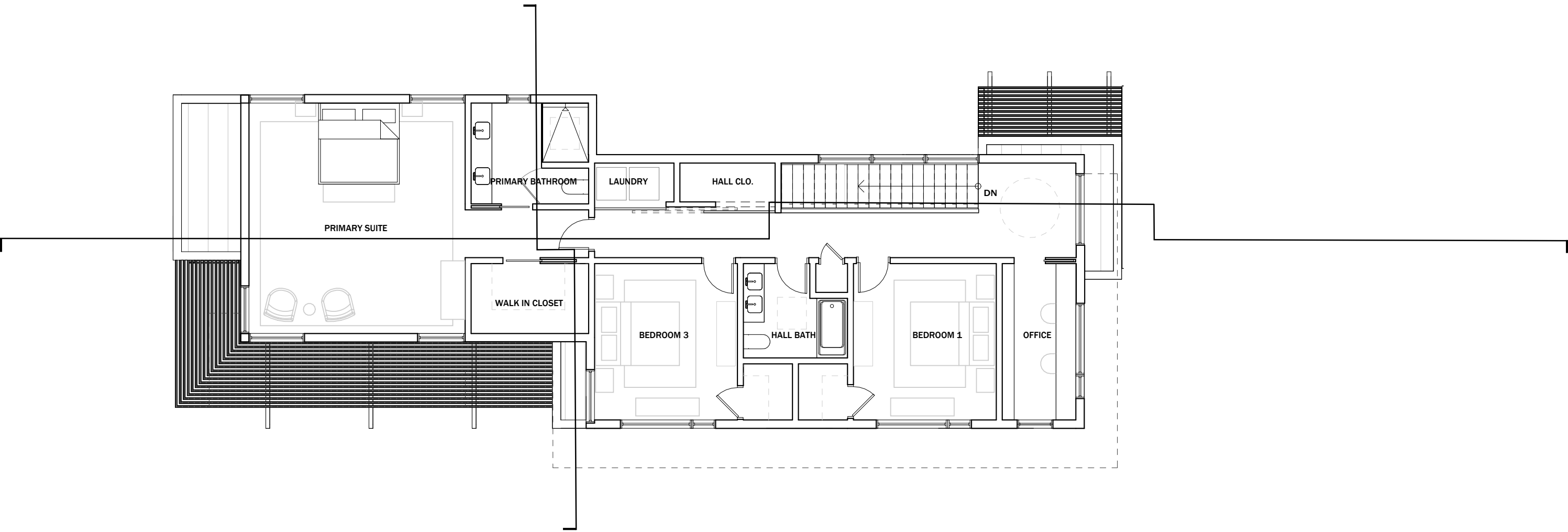
SITE PLAN



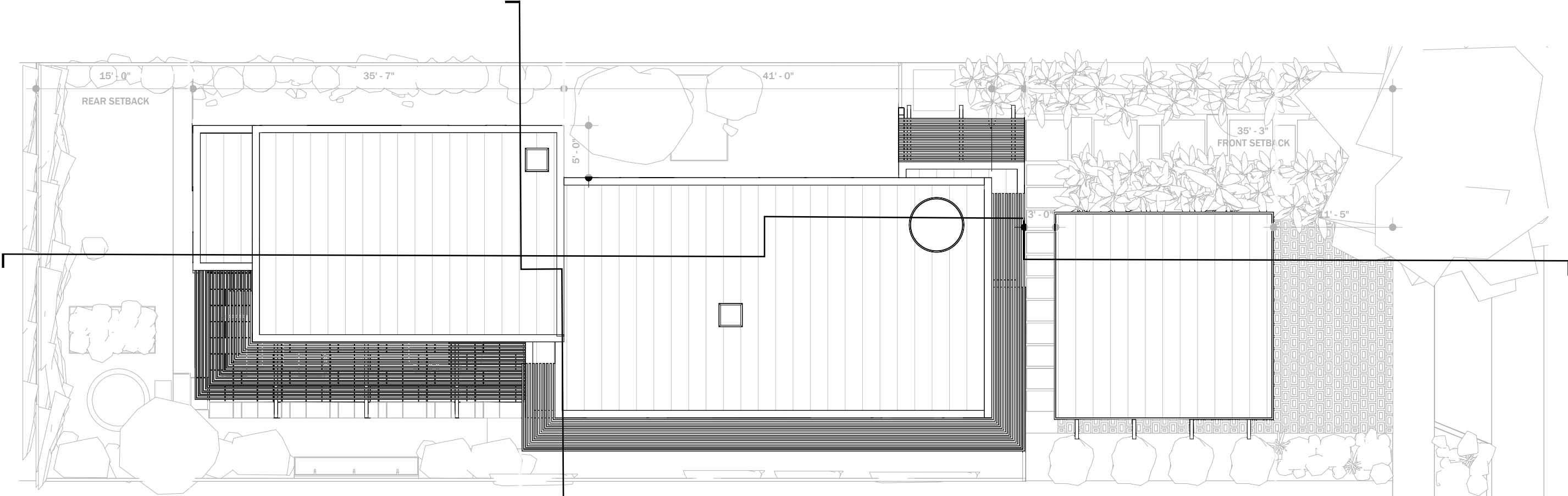
GROUND LEVEL



SECOND LEVEL



ROOF



SCALE: 1"=10'



SECTIONS

LONGITUDE





NORTH



SOUTH







RENDERINGS













CASE STUDY 2.0

REBUILDING LOS ANGELES

*A Visionary
Catalog for
Resilient and
Sustainable
Homes*

