

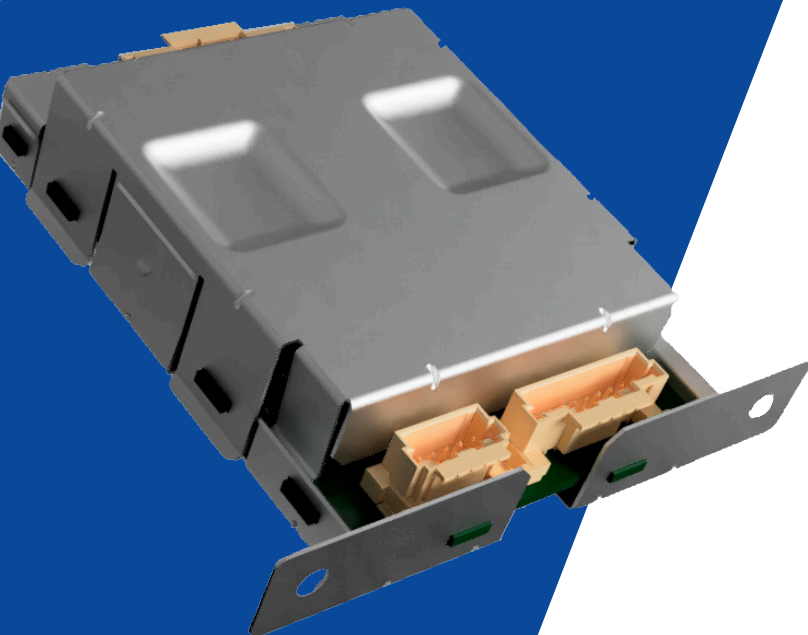
G.D.E.

driver

FULL LED

THE **HEART** OF
THE AUTOMOTIVE
INDUSTRY

GDE's Full LED Driver combines efficiency, safety, and durability in a single product. With intelligent control and cutting-edge engineering, it ensures stable and reliable performance in any automotive lighting system.



POWER SUPPLY



HIGH BEAM / LOW BEAM



DRL



POSITION



**TURN INDICATOR
TURN INDICATOR OUTAGE**

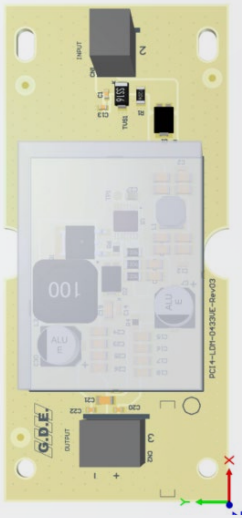
ELECTRONIC CONTROL FOR FULL LED HEADLIGHTS

GDE's Full LED Driver is developed for application in automotive headlight systems, ensuring precise current management, thermal stability, and protection against electrical variations. It delivers consistent performance, energy efficiency, and reliability.

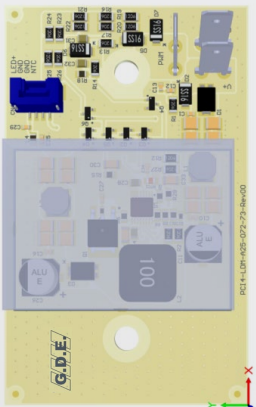
Driver FULL LED

GDE DRIVERS CURRENTLY AVAILABLE

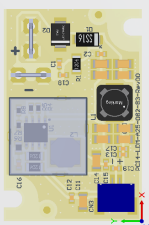
15W



15W



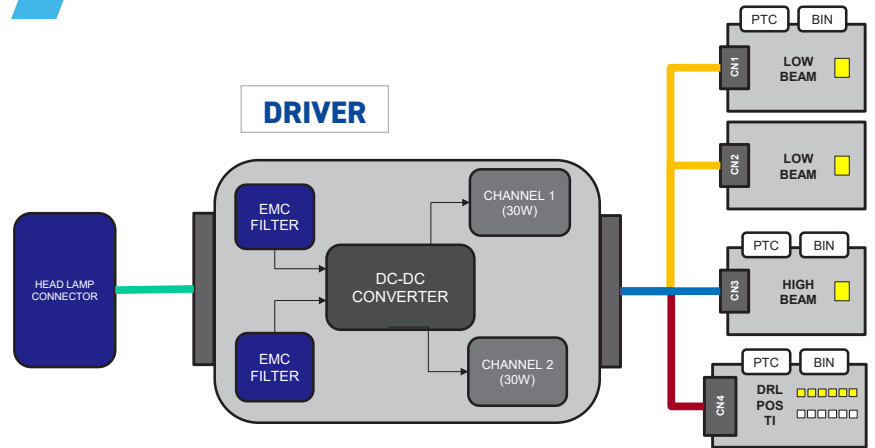
6W



DRIVER CONFIGURATION

PIN OUT FUNCTIONS:

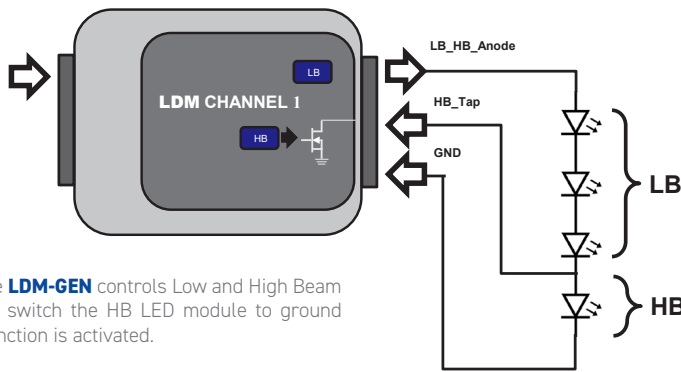
- High Beam;
- Low Beam;
- DRL;
- Position;
- Turn Indicator;
- Turn Indicator Outage.



LDM CHANNEL 1 HB/LB

PINS INPUT:

- Pin: Low Beam;
- Pin: High Beam;
- Pin: GND.



PINS OUTPUT:

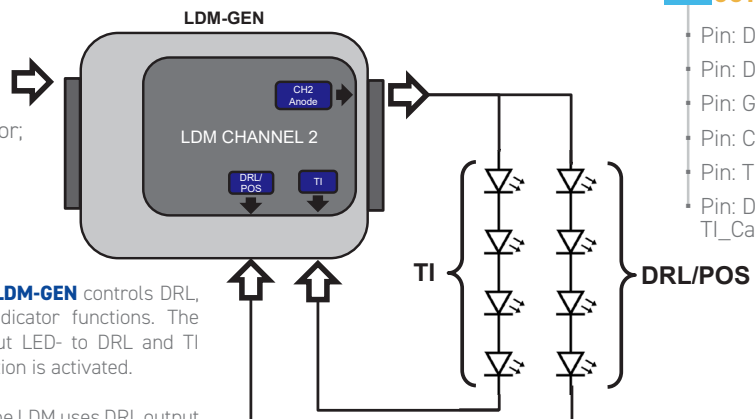
- Pin: LB_PTC;
- Pin: LB_BIN;
- Pin: GND;
- Pin: GND;
- Pin: HB_Tap;
- Pin: LB_Anode.

The **channel 1** of the **LDM-GEN** controls Low and High Beam functions. The LDM switch the HB LED module to ground when High Beam function is activated.

LDM CHANNEL 2 DRL/POS/TI

PINS INPUT:

- Pin: DRL;
- Pin: Position;
- Pin: Turn Indicator;
- Pins GND.



PINS OUTPUT:

- Pin: DRL_PTC;
- Pin: DRL_BIN;
- Pin: GND;
- Pin: CH2_Anode;
- Pin: TI_Cathode;
- Pin: DRL/ TI_Cathode .

The **channel 2** of the **LDM-GEN** controls DRL, Position and Turn Indicator functions. The LDM switch the output LED- to DRL and TI when the related function is activated.

For Position function the LDM uses DRL output dimmed with PWM (Duty cycle 10%).