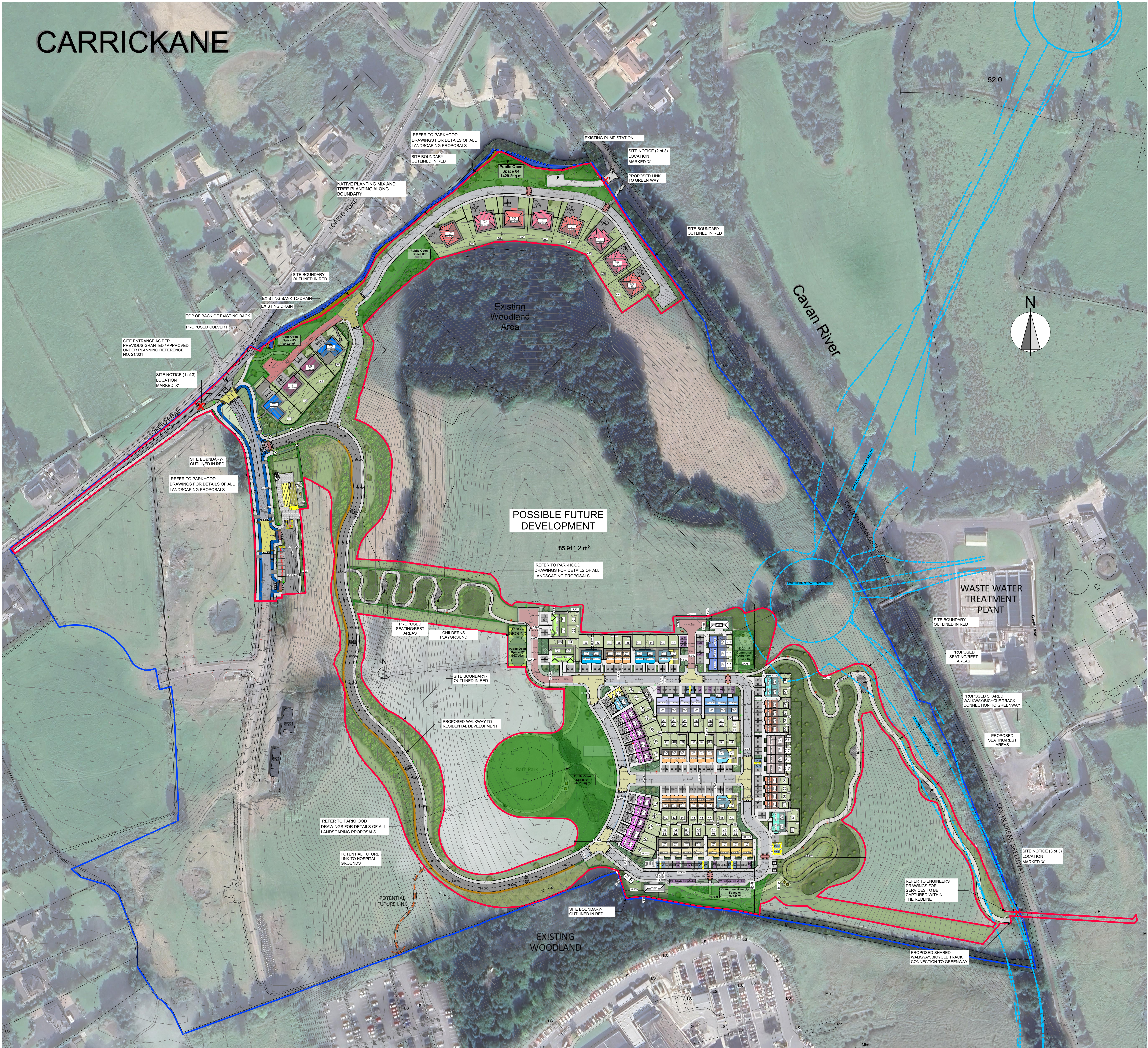


CARRICKANE



OVERALL SITE LAYOUT PLAN

1:1000

HOUSE TYPE LEGEND:	QTY.
	HOUSE TYPE - A 4 BED - 2 STOREY + 3 BED - 2 STOREY SEMI-DETACHED 8
	HOUSE TYPE - B1 3 BED - 2 STOREY SEMI-DETACHED 4
	HOUSE TYPE - B2 3 BED - 2 STOREY SEMI-DETACHED 2
	HOUSE TYPE - B3 3 BED - 2 STOREY SEMI-DETACHED 2
	HOUSE TYPE - C1 2 BED - 2 STOREY TERRACE 15
	HOUSE TYPE - C2 2 BED - 2 STOREY TERRACE 8
	DUPLEX BLOCK - D2 3 BED APARTMENT + 2 BED APARTMENT 6
	DUPLEX BLOCK - D3 3 BED APARTMENT + 2 BED APARTMENT 8
	DUPLEX BLOCK - D5 3 BED APARTMENT + 2 BED APARTMENT 8
	DUPLEX BLOCK - D6 3 BED APARTMENT + 2 BED APARTMENT 8
	DUPLEX BLOCK - D7 3 BED APARTMENT + 2 BED APARTMENT 6
	HOUSE TYPE - E1 3 BED - 2 STOREY TERRACE 10
	HOUSE TYPE - F1 3 BED - 2 STOREY SEMI-DETACHED 4
	DUPLEX BLOCK - H1 1 BED APARTMENT + 1 BED APARTMENT 8
	HOUSE TYPE - J1 4 BED - 2 STOREY DETACHED 3
	HOUSE TYPE - J2 4 BED - 2 STOREY DETACHED 4
	HOUSE TYPE - J3 4 BED - 2 STOREY DETACHED 1
	HOUSE TYPE - K1 4 BED - 2 STOREY DETACHED 2
	HOUSE TYPE - N1 4 BED - 2 STOREY DETACHED 2
<b>TOTAL UNITS:</b>	<b>109 NO.</b>

**SITE PLAN LEGEND:**

N

LISDARAN TOWNLAND, LORETO ROAD, CAVAN TOWN  
SITE BOUNDARY OUTLINED IN RED  
SITE AREA - 85,911.2sqm / 21.2 Acres / 8.6 Ha

Site Boundary  
Northern Strategic Route  
Proposed Levels  
Finished Floor Level  
House Type  
Roads  
Footpaths  
Shared Surface  
Raised Tables  
Cycle Lanes  
Grass Areas  
Public Open Space/Community Amenity Space  
Vehicle Parking  
Electrical Car Charging Parking  
Motor Car Parking  
Disabled Car Parking

**NOTES:**  
All dimensions to be taken on site.  
No dimensions to be scaled from this drawing.  
This drawing is to be read in conjunction with all other relevant drawings, Specifications ETC.  
Any Discrepancies to be reported to the Architect for clarification. This drawing may not be copied or reproduced without written consent.  
No works should be carried out without prior consent from the local planning authority.  
Please note that this is a planning drawing and is therefore limited in its capacity to convey the total information, details & specifications necessary to complete the works. Any work carried out that is not specified or detailed here will be the responsibility of the person carrying out the work. If any situation arises which could cause a contravention of the Building Regulations, then the architect should be consulted, otherwise the architect can not be held responsible.  
All work and materials to be in accordance with current building regulations, whether detailed on this drawing or not.

**REFER TO ENGINEERS DRAWINGS FOR LEVELS AND ROAD DESIGN AND SPECIFICATION**

**REFER TO LANDSCAPING DRAWINGS No. 7348-PHL-00-ZZ-DR-L1001 - 7348-PHL-00-ZZ-DR-L1008 FOR LEVELS AND ROAD DESIGN AND SPECIFICATION**

**REFER TO LIGHTING ENGINEERS DRAWINGS No. 2525-E1001-PLN-R03 FOR LEVELS AND ROAD DESIGN AND SPECIFICATION**

**REFER TO ENGINEERS DRAWINGS No. 25-018-103 - 25-018-107 FOR LEVELS AND ROAD DESIGN AND SPECIFICATION**

**PLANNING ONLY**

P-29	17/10/2025	ISSUED FOR STAGE 4 LRD APPLICATION	MF
P-28	09/10/2025	ISSUED FOR REVIEW	MF
P-27	14/10/2025	ISSUED FOR REVIEW	MF
P-26	13/10/2025	ISSUED FOR REVIEW	MF

ISSUE DATE DESCRIPTION APPD

**Michael Fitzpatrick ARCHITECTS**

©MICHAEL FITZPATRICK ARCHITECTS LIMITED  
COPYRIGHT RESERVED

PROJECT DETAILS  
Proposed residential development at Lisdaran Townland, Loreto Road, Cavan Town for Lisdaran Developments Ltd

**SITE PLAN**

Project No.	24174	Project	MFA-00-00	Volume Level	DR-A	Type	DR-A	Sheet No.	503
Drawn by	R. Conroy	Checked by	M. Fitzpatrick	Date	23/10/2025	Scale	As indicated	Drawn by	R. Conroy
Drawn by	R. Conroy	Checked by	M. Fitzpatrick	Date	23/10/2025	Scale	As indicated	Drawn by	R. Conroy

www.michaelfitzpatrick.ie  
info@michaelfitzpatrick.ie  
049 4365800

PLAN PLAN PLAN