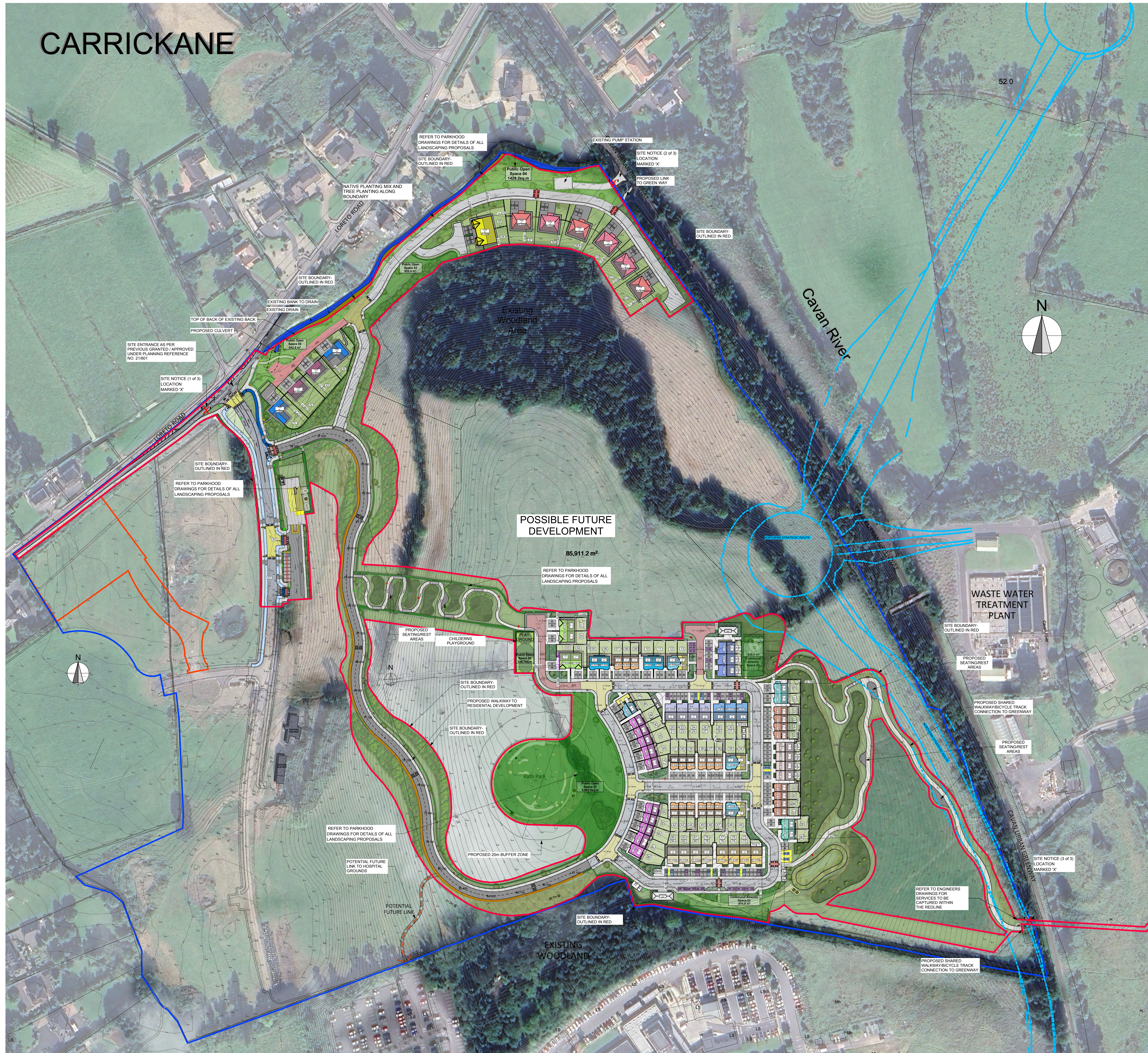


CARRICKANE



HOUSE TYPE LEGEND:	QTY.
	HOUSE TYPE - A 4 BED - 2 STOREY + 3 BED - 2 STOREY SEMI-DETACHED 8
	HOUSE TYPE - B1 3 BED - 2 STOREY SEMI-DETACHED 4
	HOUSE TYPE - B2 3 BED - 2 STOREY SEMI-DETACHED 2
	HOUSE TYPE - B3 3 BED - 2 STOREY SEMI-DETACHED 2
	HOUSE TYPE - C1 2 BED - 2 STOREY TERRACE 15
	HOUSE TYPE - C2 2 BED - 2 STOREY TERRACE 8
	DUPLIX BLOCK - D2 3 BED APARTMENT + 2 BED APARTMENT 6
	DUPLIX BLOCK - D3 3 BED APARTMENT + 2 BED APARTMENT 8
	DUPLIX BLOCK - D5 3 BED APARTMENT + 2 BED APARTMENT 8
	DUPLIX BLOCK - D6 3 BED APARTMENT + 2 BED APARTMENT 8
	DUPLIX BLOCK - D7 3 BED APARTMENT + 2 BED APARTMENT 6
	HOUSE TYPE - E1 3 BED - 2 STOREY TERRACE 10
	HOUSE TYPE - E1 3 BED - 2 STOREY SEMI-DETACHED 4
	DUPLIX BLOCK - H1 1 BED APARTMENT + 1 BED APARTMENT 8
	HOUSE TYPE - J1 4 BED - 2 STOREY DETACHED 3
	HOUSE TYPE - J2 4 BED - 2 STOREY DETACHED 3
	HOUSE TYPE - S1 4 BED - 2 STOREY SEMI-DETACHED 2
	HOUSE TYPE - K1 4 BED - 2 STOREY DETACHED 2
	HOUSE TYPE - N1 4 BED - 2 STOREY DETACHED 2
TOTAL UNITS:	109 NO.

SITE PLAN LEGEND:	
	N
	SITE BOUNDARY
	SITE OWNERSHIP
	Northern Strategic Route
	Proposed Levels
	Finished Floor Level
	House Type
	Roads
	Footpaths
	Shared Surface
	Raised Tables
	Cycle Lanes
	Grass Areas
	Public Open Space/Community Amenity Space
	Vehicle Parking
	Electrical Car Charging Parking
	Visitor Car Parking
	Disabled Car Parking

NOTES:
 All dimensions to be taken on site - No dimensions to be scaled from this drawing.
 This drawing is to be read in conjunction with all other relevant drawings, Specifications ETC.
 Any discrepancy to be reported to the Architect for clarification. This drawing may not be copied or reproduced without written consent.
 No works should be carried out without prior consent from the local planning authority.
 Please note that this is a planning drawing and is therefore limited in its capacity to convey the total information, details & specifications necessary to complete the works. Any work carried out that is not specified or detailed here will be the responsibility of the contractor and not that of any planning officer. Any work carried out should be in accordance with current building regulations, unless the architect should be consulted otherwise the architect can not be held responsible.
 All work and materials used to be in accordance with current building regulations unless otherwise stated on this drawing or not.

REFER TO ENGINEERS DRAWINGS FOR LEVELS AND ROAD DESIGN AND SPECIFICATION
REFER TO LANDSCAPING DRAWING No. 7345-PL-00-ZZ-DR-L-1001 FOR THE OVERALL LANDSCAPING PLAN
REFER TO LIGHTING DRAWINGS No. 2525-E1000-PLN-R04 & 2525-E1001-PLN-R04 FOR LIGHTING LAYOUT & DETAILS
REFER TO ENGINEERS DRAWINGS No. 25-018-103 - 25-018-107 FOR LEVELS AND ROAD DESIGN AND SPECIFICATION

PLANNING ONLY FURTHER INFORMATION

ISSUE	DATE	DESCRIPTION	APPRO
P-35	17/04/2026	ISSUED FOR STAGE 4 LRD FURTHER INFORMATION	MF
P-34	10/04/2026	ISSUED FOR INFORMATION	MF
P-33	05/03/2026	ISSUED FOR REVIEW	MF
P-32	25/02/2026	ISSUED FOR REVIEW	MF
P-31	12/02/2026	ISSUED FOR REVIEW	MF
P-30	11/02/2026	ISSUED FOR REVIEW	MF
P-29	17/10/2025	ISSUED FOR STAGE 4 LRD APPLICATION	MF
P-28	09/10/2025	ISSUED FOR REVIEW	MF

Michael Fitzpatrick ARCHITECTS
 100 Main Street, Carrickane, Co. Cavan
 Tel: 049 4320800
 Email: info@mfitzpatrick.ie
 Website: www.mfitzpatrick.ie