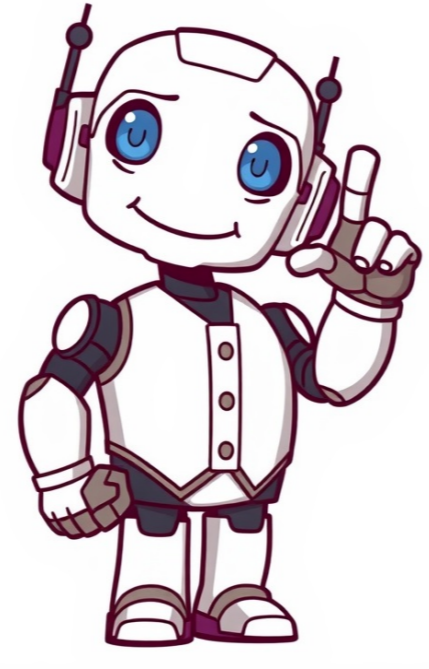


Continue





























Chicco has become synonymous with baby products in the US, but few know that this Italian brand has a rich history spanning over sixty years. Founded by Pietro Catelli in 1958, Chicco began as an inventor and developer of pharmaceutical devices before expanding into baby care products after his son's birth. Since its inception, Chicco has grown exponentially, becoming a global brand with a presence in 120 countries, offering a vast array of products from baby gear to apparel. As part of the global Artsana Group, Chicco proudly partners with sister brands like Boppy and Prénatal to provide innovative, high-quality solutions for parents and babies. Chicco's commitment to sustainability is evident in its Sustainable Parenting Initiative, which prioritizes responsible production methods, social commitment, and a reduced environmental impact. The brand's mission is to not only enhance the lives of children but also protect the future of our planet. The Fit360 ClearTex car seat stands out for its innovative features, including a 360° one-hand rotation system and LeverLock self-tensioning lock system. This convertible car seat provides ease of use, safety, and style, making it an ideal choice for parents seeking top-rated infant car seats. Additionally, Chicco offers other products like the KeyFit Max, which boasts extended use integrated anti-rebound bar, easiest to install supercinch latch attachment, and oneFit lx clear tex. These features ensure a safe and convenient travel experience for babies. The KeyFit Car Seat - A Game-Changer in Infant Safety ===== Key features of the KeyFit car seat include clearTex flame retardant-free materials and the LeverLock Self-Tensioning Lock System for advanced side impact protection. The OneFit Max ClearTex offers maximized rear-facing legroom, making it ideal for parents looking to prioritize their child's comfort during travel. This baby-friendly car seat is designed from birth through booster and boasts a slim design that won't compromise comfort or space in your vehicle. Its innovative features include a leveling foot with bubble level-indicators to ensure accurate angle adjustments every time. The KeyFit also comes equipped with premium belt routing, integrated lock-offs, and the SuperCinch LATCH tightener for easy installation and secure fit. With its ability to click into the included Base and compatible Chicco strollers, this car seat is perfect for parents who value convenience and portability. Its tailored design provides removable head and body support for newborns as small as 4 pounds, while the EPS energy-absorbing foam shell offers enhanced impact protection. Additional features include a recline foot, RideRight bubble level-indicators, and a SuperCinch LATCH tightener to ensure a secure fit every time. The KeyFit is designed for use with Chicco strollers and meets rigorous safety standards from the Baby Safety Alliance and the Federal Aviation Administration. ===== Our baby products are specifically designed to adapt to your child's growth and development, with extended rear-facing options for infants and toddlers. We offer a range of swivel car seats that rotate to provide optimal support and comfort during transportation. For mealtime, our high chairs transition seamlessly into low-to-ground seating options or convert to youth stools as your child grows. Sleek and lightweight, these chairs blend in with any home decor while featuring wipeable removable seat pads and easy-to-clean surfaces. Our space-saving fold stows away neatly with a tray for convenient storage. Removable leg extensions create a low-to-ground seat for snacks or playtime, while adjustable positions ensure optimal comfort. The sturdy footrest ensures your child can sit comfortably. For potty training, we offer Chicco products that focus on comfort, stability, and ease of use. Our essentials include standalone trainer potties, big toilet seats, and tools to encourage independent bathroom use. We're committed to making this process convenient and comfortable for both kids and parents. When selecting a stroller, consider your child's age, weight, and height to ensure a proper fit. Look for a model compatible with an infant car seat if planning to use one. Storage features like parent trays, cup holders, and spacious under-stroller baskets add convenience but may impact size and weight. Price is also an essential factor, as strollers vary greatly in cost based on features and functionality. We've compiled helpful information on selecting the best stroller for your family in our Best Baby Strollers: Buying Guide. Explore our Chicco stroller comparison chart to see different models side by side.