



VINLAND
LITHIUM
INC.

2025

Kraken/Killick Lithium Discovery – Southwestern Newfoundland

TSXV:VLD

Barry A. Sparkes P.Geo., VP Exploration

Forward-Looking Statements

This Presentation includes certain "forward-looking statements" which are not comprised of historical facts. Forward-looking statements include estimates and statements that describe Vinland's future plans, objectives or goals, including words to the effect that Vinland Lithium Inc. or management expects a stated condition or result to occur. Forward-looking statements may be identified by such terms as "believes", "anticipates", "expects", "estimates", "may", "could", "would", "will", or "plan". Since forward-looking statements are based on assumptions and address future events and conditions, by their very nature they involve inherent risks and uncertainties. Although these statements are based on information currently available to Vinland Lithium Inc., Vinland provides no assurance that actual results will meet management's expectations. Risks, uncertainties and other factors involved with forward-looking information could cause actual events, results, performance, prospects and opportunities to differ materially from those expressed or implied by such forward-looking information. Forward-looking information in this Presentation includes, but is not limited to, Vinland Lithium Inc.'s objectives, goals or future plans, statements, exploration results, potential mineralization, the estimation of mineral resources, exploration and mine development plans, successful exploration results, successful categorization of mineral resources into mineral reserves, successful development of a feasibility study, timing of the commencement of operations and estimates of market conditions.

Factors that could cause actual results to differ materially from such forward-looking information include, but are not limited to failure to identify mineral resources, failure to convert estimated mineral resources to reserves, the inability to complete a feasibility study which recommends a production decision, the preliminary nature of metallurgical test results, delays in obtaining or failures to obtain required governmental, environmental or other project approvals, political risks, inability to fulfill the duty to accommodate First Nations and other indigenous peoples if potential issues arise, uncertainties relating to the availability and costs of financing needed in the future, changes in equity markets, inflation, changes in exchange rates, fluctuations in commodity prices, delays in the development of projects, capital and operating costs varying significantly from estimates and the other risks involved in the mineral exploration and development industry, and those risks set out in Vinland Lithium Inc.'s public documents filed on SEDAR.

Although Vinland Lithium Inc. believes that the assumptions and factors used in preparing the forward-looking information in this Presentation are reasonable, undue reliance should not be placed on such information, which only applies as of the date of this presentation and no assurance can be given that such events will occur in the disclosed time frames or at all. Vinland Lithium Inc. disclaims any intention or obligation to update or revise any forward-looking information, whether as a result of new information, future events or otherwise, other than as required by law.

The presentation has been jointly prepared by management of Vinland Lithium Inc. and does not represent a recommendation to buy or sell these securities. Investors should always consult their Investment Advisors prior to making any Investment Decision.

Intersection widths are core widths, unless otherwise stated.

Barry A. Sparkes, P.Geo., Vice President Exploration of Vinland Lithium Inc., a Qualified Person in accordance with Canadian regulatory requirements as set out in NI 43-101, has read and approved the scientific and technical information that forms the basis for the disclosure contained in this presentation.



Sometime in 2023, The Alliance gained a partner...

PIEDMONT
LITHIUM

BENTON
RESOURCES INC.

SOKOMAN
MINERALS CORP.

VINLAND
LITHIUM
INC.

www.vinlandlithium.ca | TSXV:VLD



Benton Resources and Sokoman Minerals partner with Piedmont Lithium and create Vinland Lithium Inc to advance the Killick Lithium Project in Newfoundland

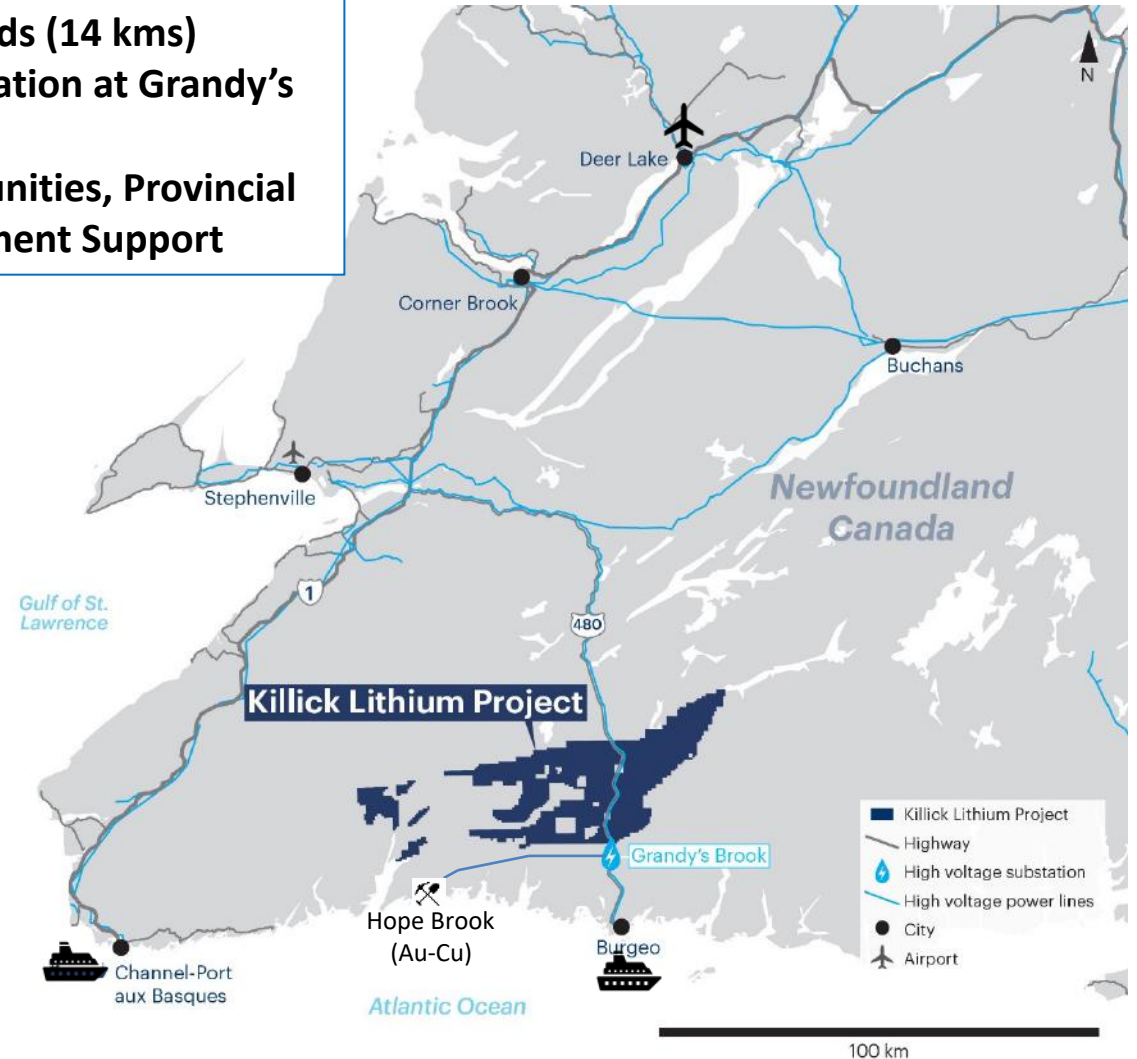
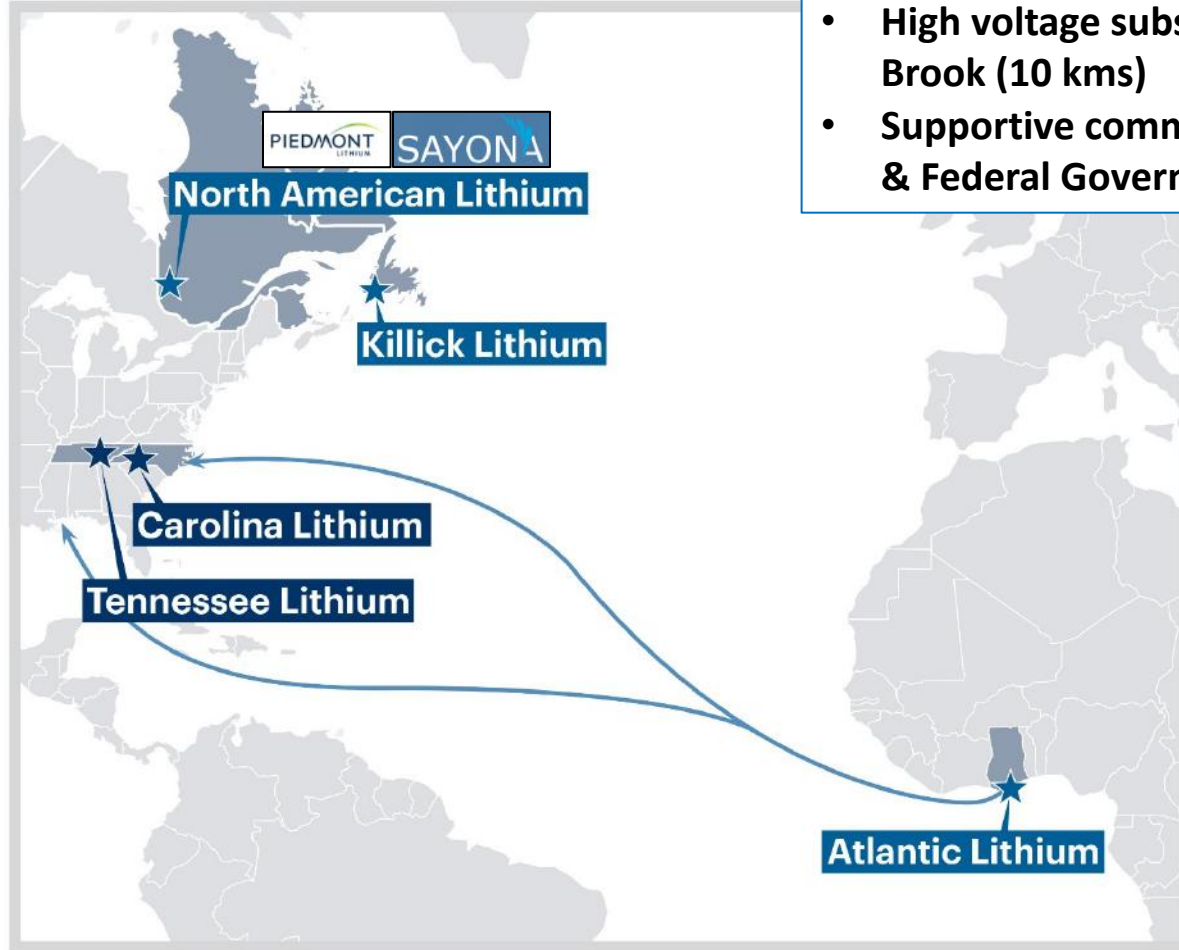
- Benton and Sokoman created Vinland Lithium Inc. and its wholly-owned subsidiary Killick Lithium Inc
- Benton and Sokoman transferred 100% interest of the Golden Hope Project which held the Kraken and Killick Lithium discoveries, in return for 4 million shares each (8 million shares) of Vinland Lithium Inc
- Piedmont financed Vinland CAD\$2.0M @ CAD\$1.00 per share to hold 19.9% (2 million shares)
- Piedmont will have the option to earn up to a 62.5% direct interest in Killick (the project) by spending an aggregate CAD\$12.0M in exploration and development during the option period (54 months) and paying Benton and Sokoman CAD\$5.0M each
- Vinland has completed a NI43-101 on the Killick Project and achieved its public listing in May 2025
- Piedmont announced a merger deal with Sayona Mining on Nov 19, 2024 – still in progress with amendments to the deal recently proposed. No exact timeline for completion



Killick Lithium Project

STRATEGIC LOCATION TO PIEDMONT/SAYONA OPERATIONS, STRONG INFRASTRUCTURE

- Close to paved roads (14 kms)
- High voltage substation at Grandy's Brook (10 kms)
- Supportive communities, Provincial & Federal Government Support



Killick Lithium Project

BIG PICTURE

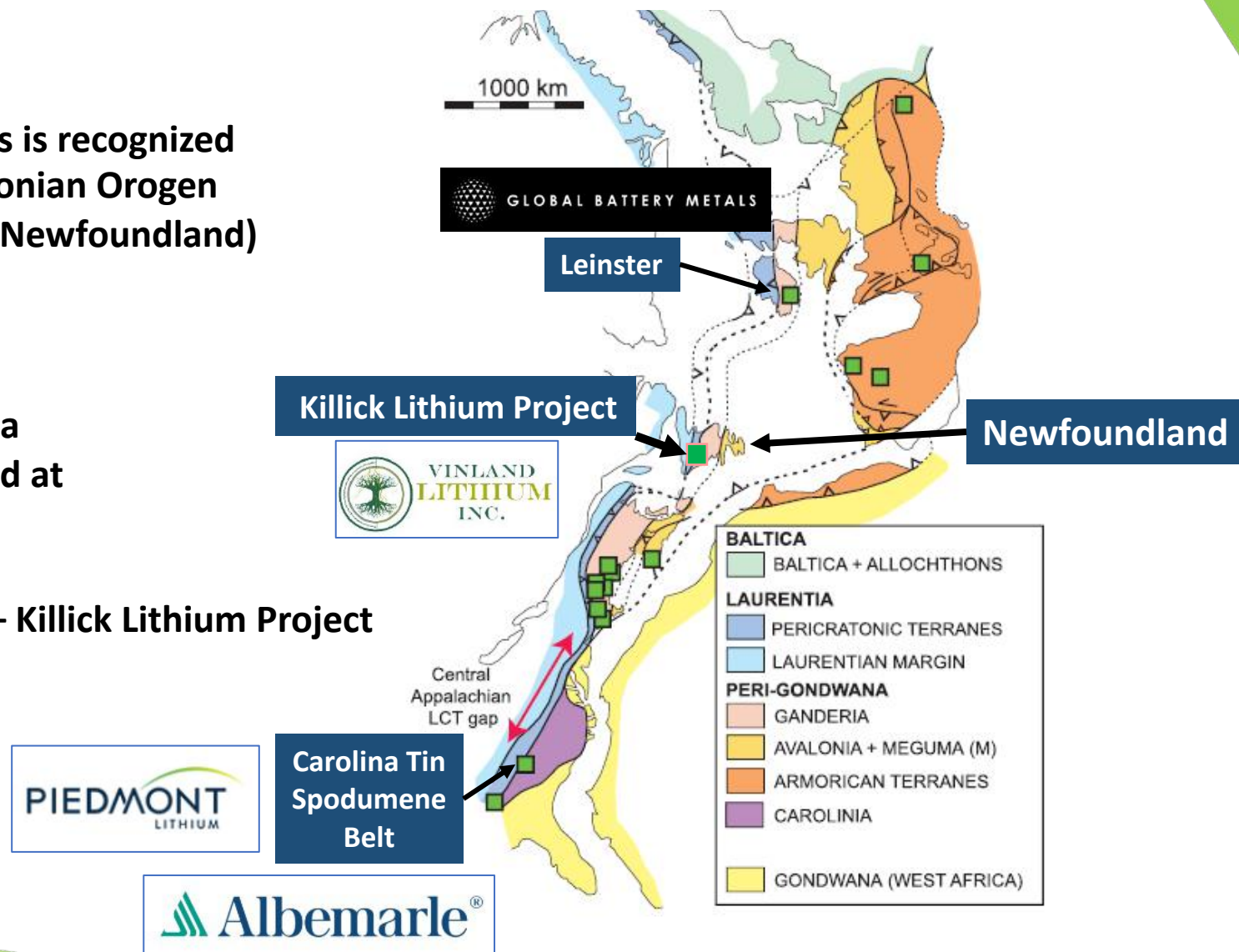
The key structural control on lithium districts is recognized along the length of the Appalachian – Caledonian Orogen (Leinster – UK; Piedmont – USA; Kraken – Newfoundland)

Major collisional boundary

Significant Li resources known in the Carolina Tin-Spodumene Belt (Piedmont Lithium); and at Leinster (Ireland)

Promising new discovery in Newfoundland – Killick Lithium Project

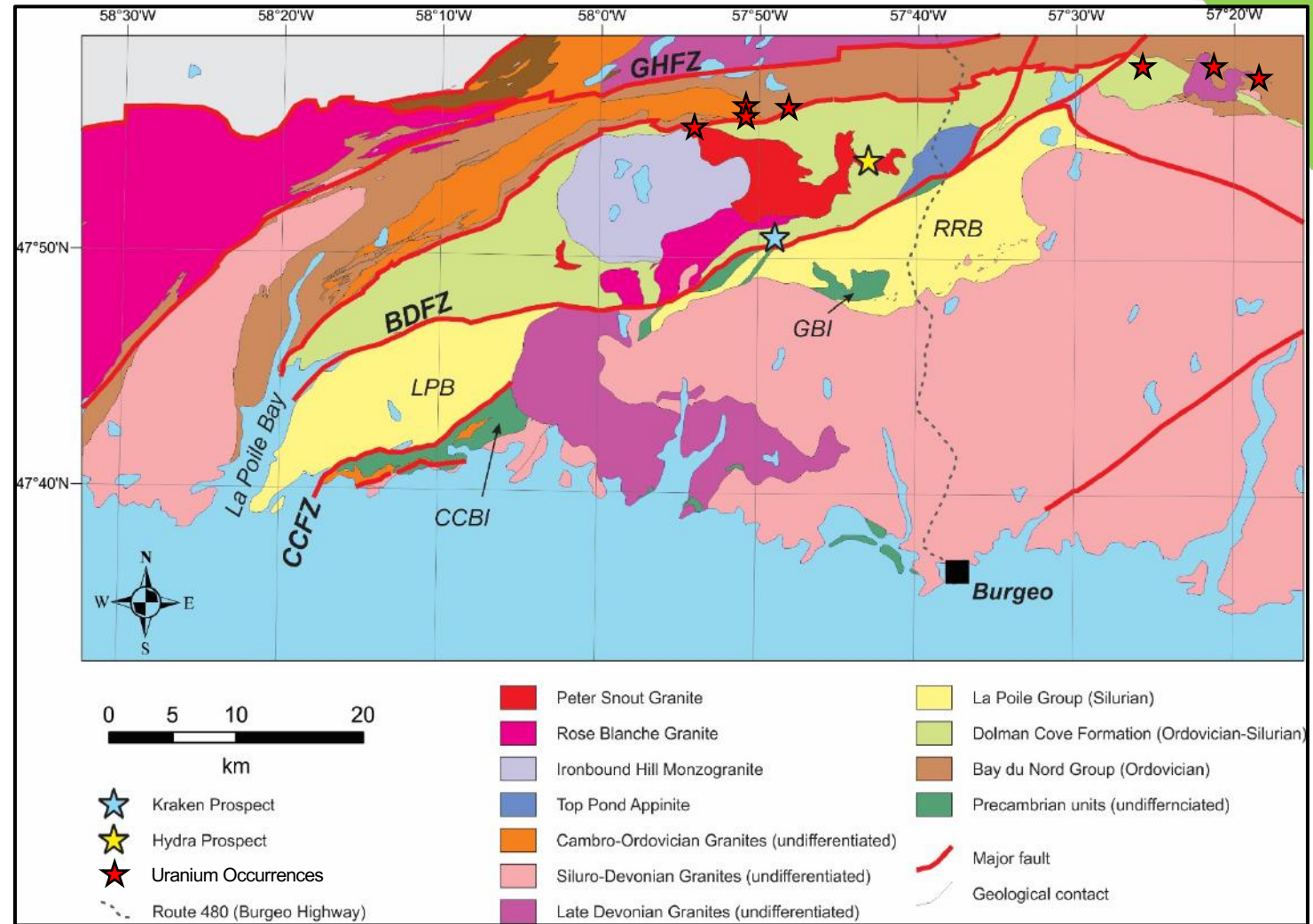
APPALACHIAN – CALEDONIAN (and Variscan)
LCT PEGMATITE-HOSTED LITHIUM in the North Atlantic Borderlands



Killick Lithium Project

REGIONAL GEOLOGY

- Numerous Silurian and Devonian granitoids intruding Ediacaran to Silurian metasedimentary and metavolcanic rocks
 - Peraluminous Peter Snout and Rose Blanche Granites
- Cut by a number of major crustal shear zones, including Bay d'Est Fault Zone
- LCT pegmatites recorded from two locations within amphibolite-grade Dolman Cove Formation
- Multiple Uranium Occurrences located in the region



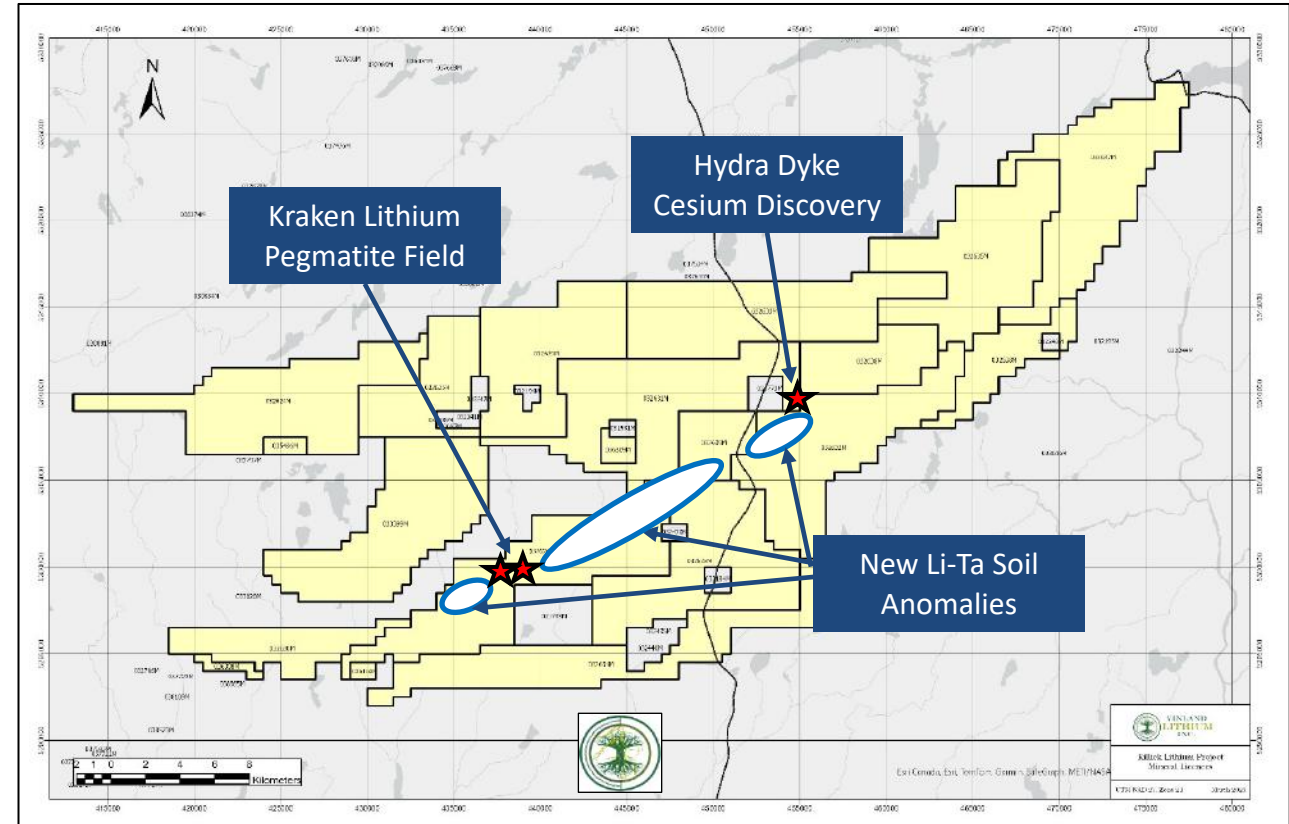
Map from Conliffe, J., Archibald, D. and Sparkes, B.A., In Press



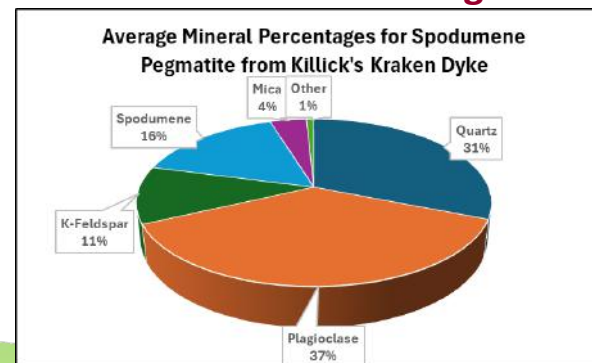
Killick Lithium Project – Kraken Lithium and Hydra Cesium Discovery

PROPERTY OVERVIEW

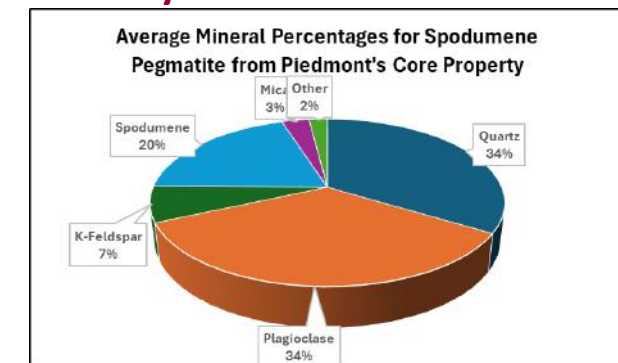
- District-scale property position – over 60km of strike to explore!
- Multiple Li-bearing dykes in the Kraken Pegmatite Field, Cs-Li-Rb-Ta Dyke at Hydra
- Extensive Li-Ta soil anomalies indicate strong potential for additional discoveries
- Comparable XRD mineralogy to Piedmont's Carolina Lithium Project
- Collaborative research initiative with GSN, MUN, St. Francis Xavier totaling ~20 geoscientists working on the project!



Pegmatite XRD Analysis



Average of 3 Spodumene Pegmatite Samples



Average of 16 Spodumene Pegmatite Samples



Killick Lithium Project – Kraken Lithium and Hydra Cesium Discovery

DISCOVERY TIMELINE

- **Summer-Fall 2021**
 - Initial Kraken Dyke and East Dyke Prospecting Discoveries
 - High-resolution airborne Magnetics and VLF-EM (~50% of area)
- **Winter 2022**
 - Phase 1 Drilling 6 Holes - 1012 meters
- **Summer 2022**
 - Discovery of Multiple Dykes in the Kraken Pegmatite Field including Killick by prospecting and trenching
- **Summer-Fall 2022**
 - Phase 2 Drilling (18 holes – 3073 meters) and
 - Phase 3 Drilling (11 holes – 1383 meters)

Drilling at Killick and Kraken, Initiation of large-scale geochemical sampling program, Hydra Cesium Discovery



Killick Lithium Project – Kraken Lithium and Hydra Cesium Discovery

DISCOVERY TIMELINE

- **Summer-Fall 2023**
 - Phase 4 Drilling (27 holes – 4403 meters) Drilling at Killick Dyke
 - Phase 1 (6 holes – 522 meters) Drilling at Hydra Cs-Li-Rb-Ta Dyke

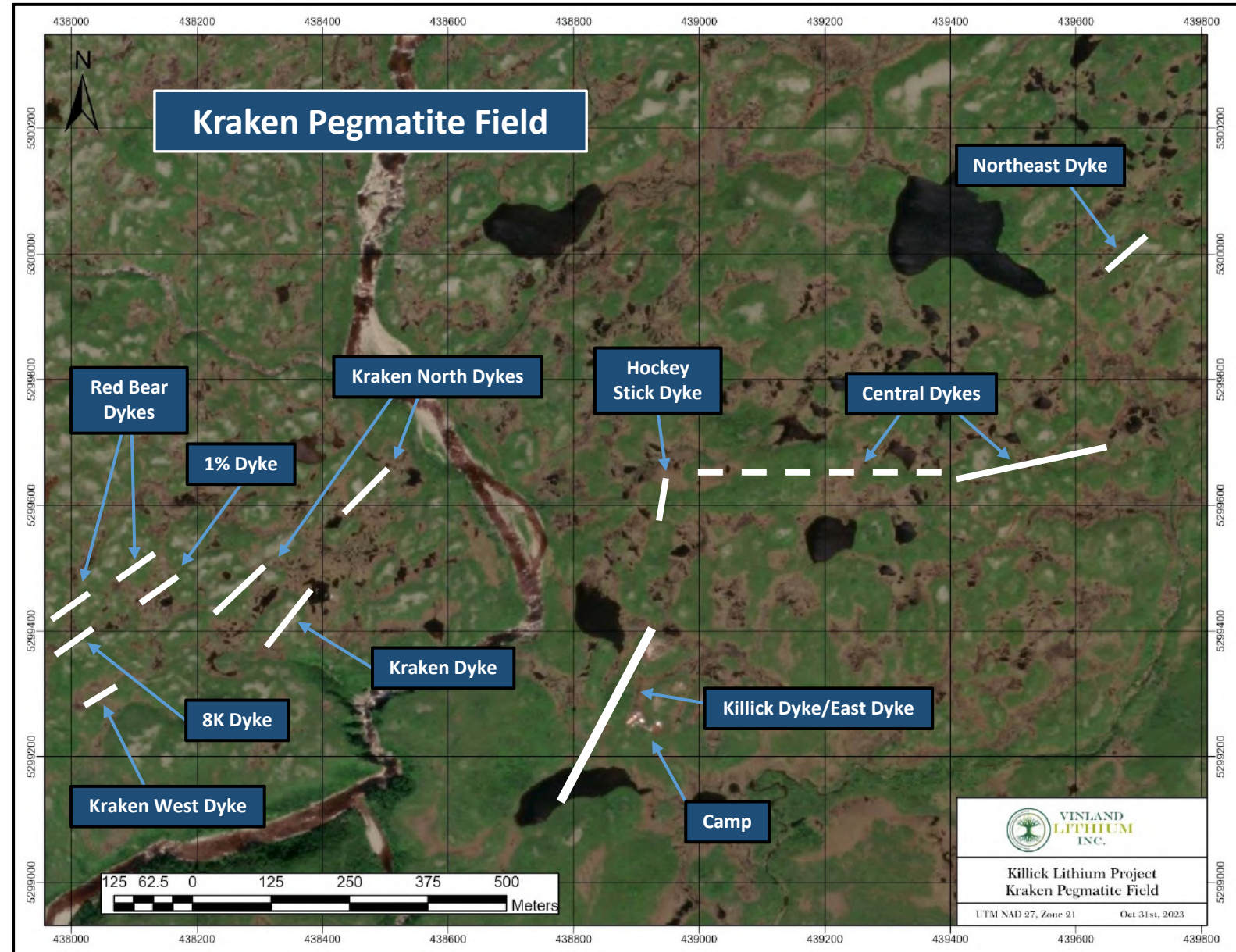
Continued Geochemical Sampling (8067 soils, 35 tills), structural mapping, trenching and channel sampling
- **Spring 2024**
 - High-resolution airborne Magnetics and VLF-EM over the remaining ~50% of the project area
- **Summer 2024**
 - Continued Geochemical Sampling (462 soils, 297 Rocks, 19 tills), structural mapping, channel sampling
 - Discovery of multiple spodumene-bearing LCT float at Kraken South with assays to 1.99 % Li₂O



Killick Lithium Project

KRAKEN PEGMATITE FIELD

- The Kraken Pegmatite Field is approximately 1 x 2 km and contains several LCT pegmatites
- All dykes are open and require more drilling, several are undrilled
- Highlighted Drilling Intersections Include:
 - Killick Dyke: 15.23m @ 1.04% Li₂O in GH-22-27 and 13.37m @ 1.22% Li₂O in GH-22-45
 - East Dyke: 20.82m @ 0.60% Li₂O incl. 5.5m @ 1.16% Li₂O in GH-22-15, and 8.37m @ 0.91% in GH-22-08
 - Kraken Dyke: 8.4m @ 0.95% Li₂O in GH-22-01
 - Kraken North Dyke: 16.2m @ 0.43% Li₂O in GH-22-05

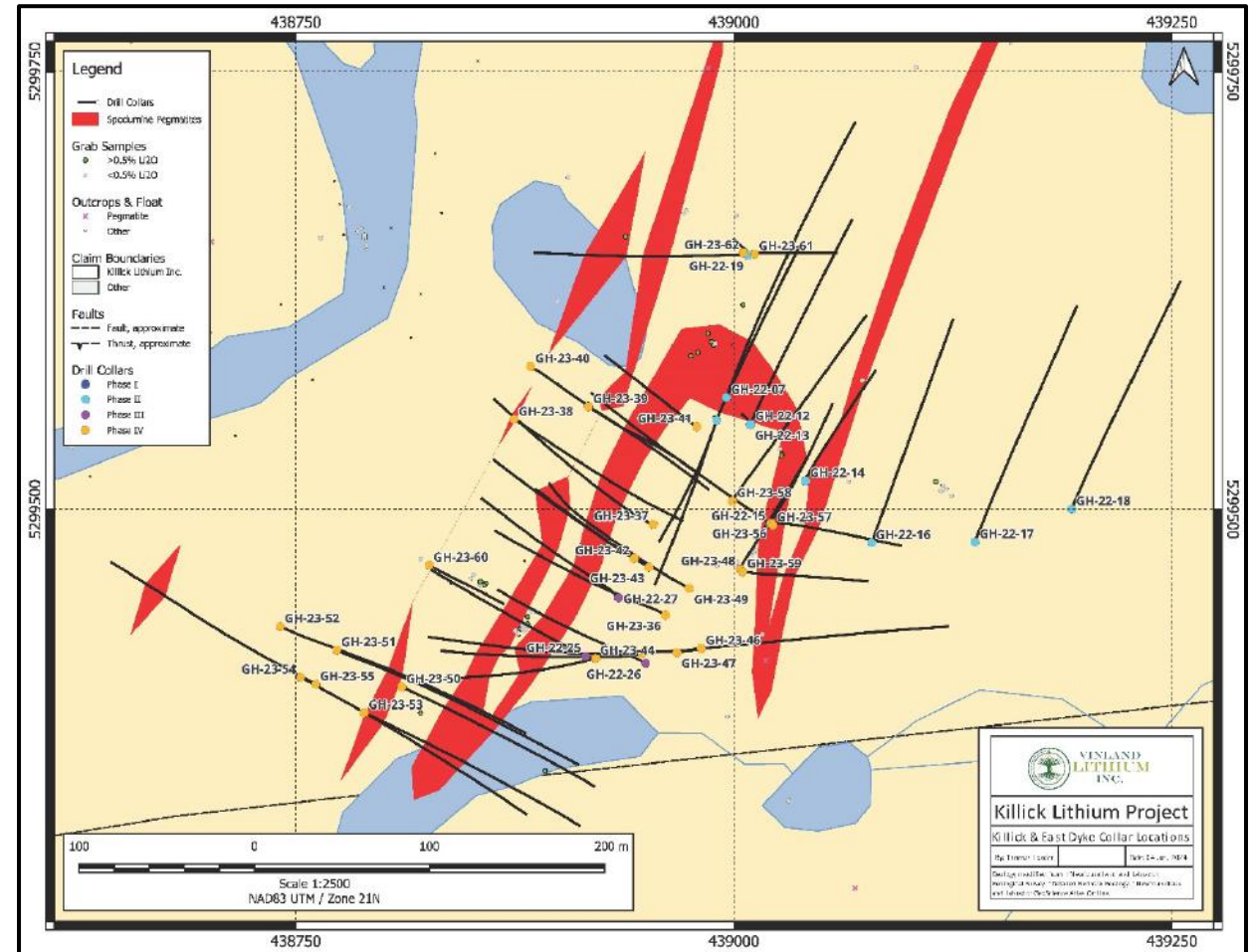


Killick Lithium Project

KILICK DYKE/EAST DYKE DISCOVERY

- The Killick/East Dyke discovery is approximately 300 meters in strike length, measures to 15 meters wide and is open to the south, north and at depth. Approximately 30 drill holes have tested the zone.

GH-23-45

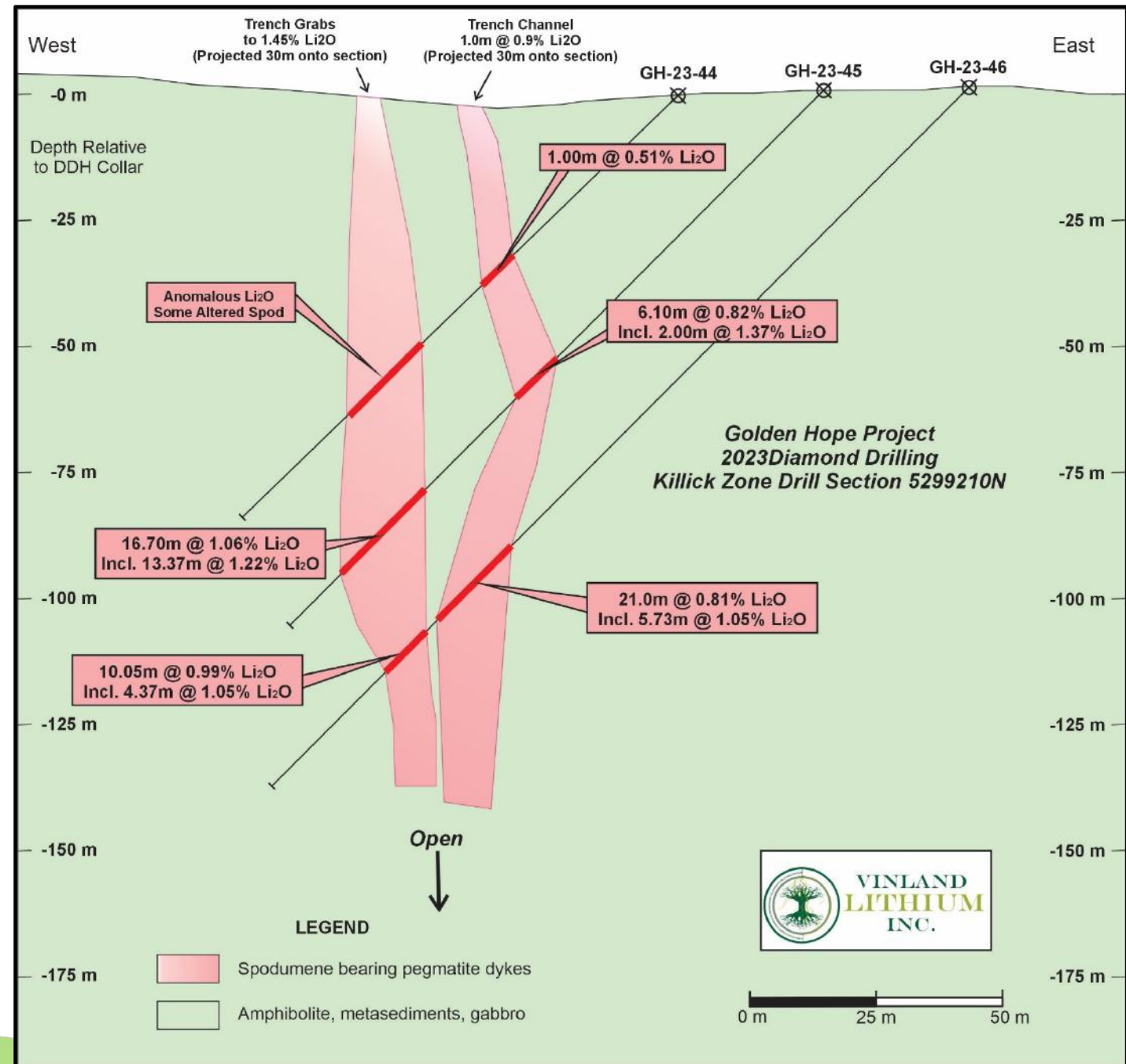


Killick Lithium Project

KILICK DYKE/EAST DYKE DISCOVERY

- The Killick/East Dyke shows good continuity at depth demonstrating excellent potential for follow-up drilling
- Highlighted Drilling Intersections Include:

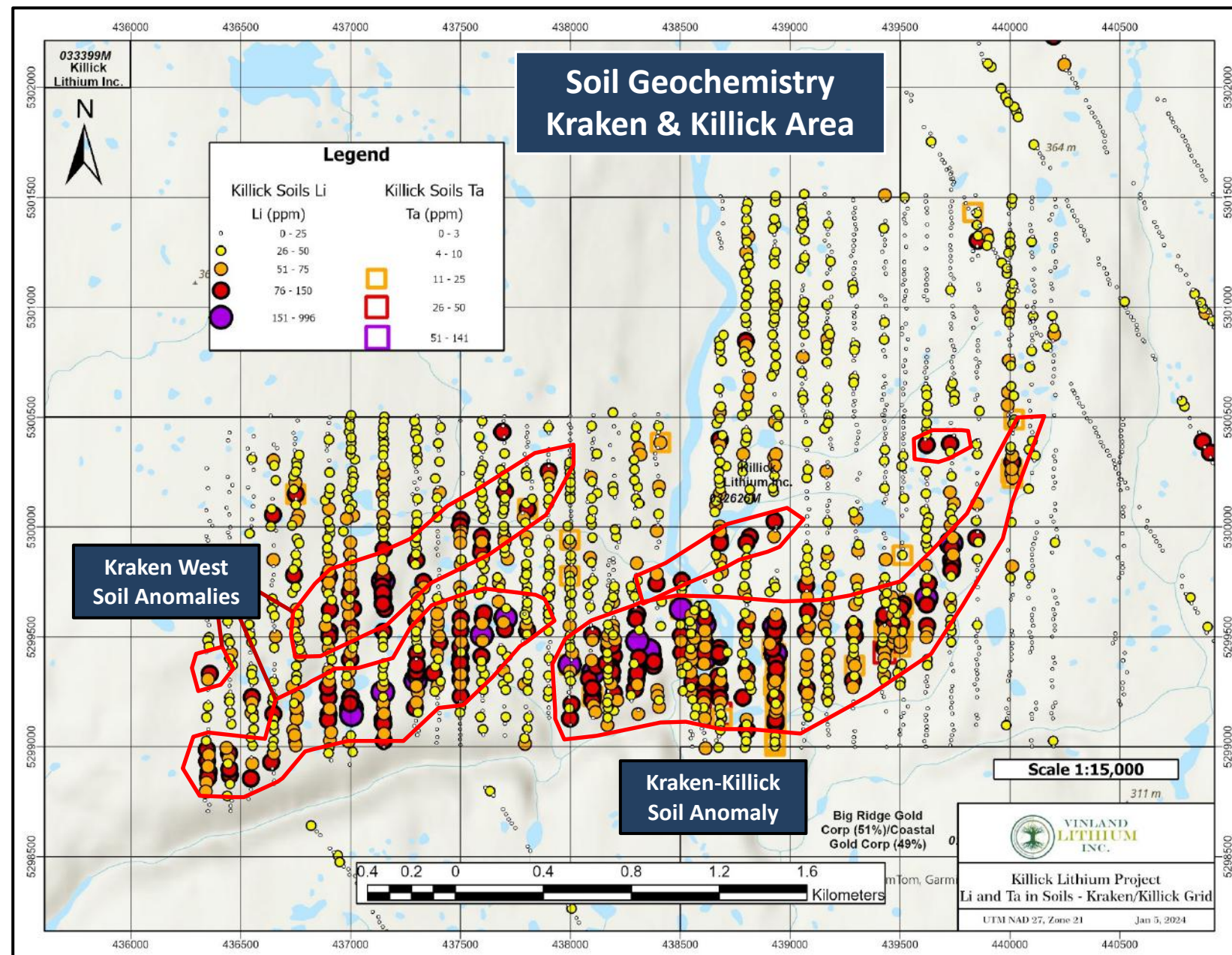
DDH	Length	% Li ₂ O
GH-22-08	8.37m	0.91%
GH-22-15	20.82m	0.60%
Incl.	5.5m	1.16%
GH-22-27	15.23m	1.04%
Incl.	4.18m	1.48%
GH-23-37	5.01m	0.69%
GH-23-45	16.70m	1.06%
Incl.	13.37m	1.22%
GH-23-46	21.00m	0.81%
Incl.	5.73m	1.05%
GH-23-57	9.19m	0.45%
Incl.	1.31m	1.25%



Killick Lithium Project

KRAKEN – KILLICK Area

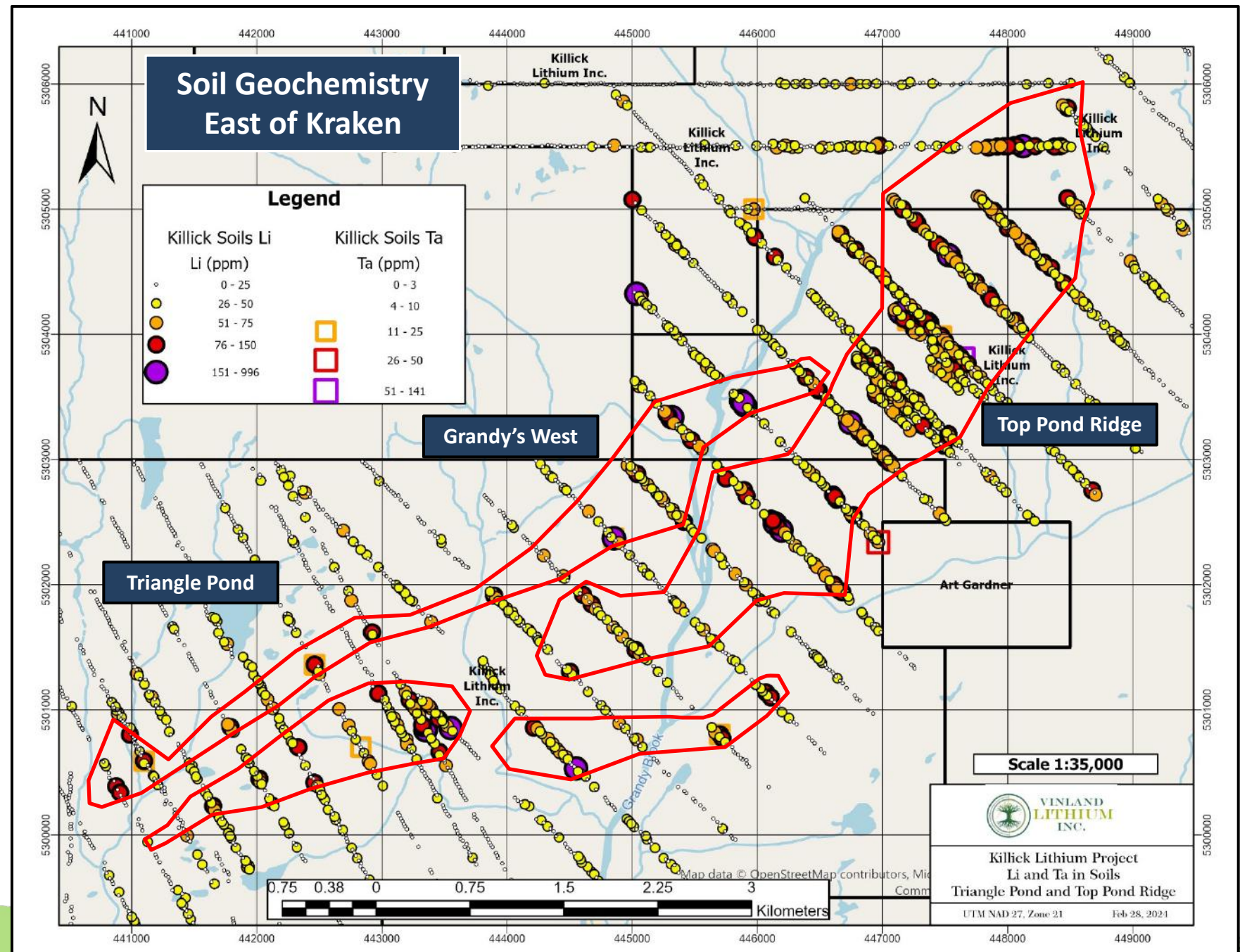
- Soil sampling has identified new Li and Ta soil anomalies at Kraken West area
- Prospecting and trenching has identified pegmatite dykes in all soil anomaly areas
- Anomalous tourmaline counts in tills – tourmaline halo common near dykes
- Additional infill/expansion soil sampling and further prospecting is ongoing
- 8364 B-horizon soil samples collected to date



Killick Lithium Project

SOIL GEOCHEMISTRY EAST OF KRAKEN

- Multiple, large anomaly areas east of Kraken at Triangle Pond, Grandy's West and Top Pond Ridge – several km in length!
- Initial prospecting has identified pegmatite dykes in all soil anomaly areas
- Anomalous tourmaline counts in till samples
- Infill sampling and targeted prospecting planned for these high-priority targets



Hydra Cesium Discovery

A First for Newfoundland

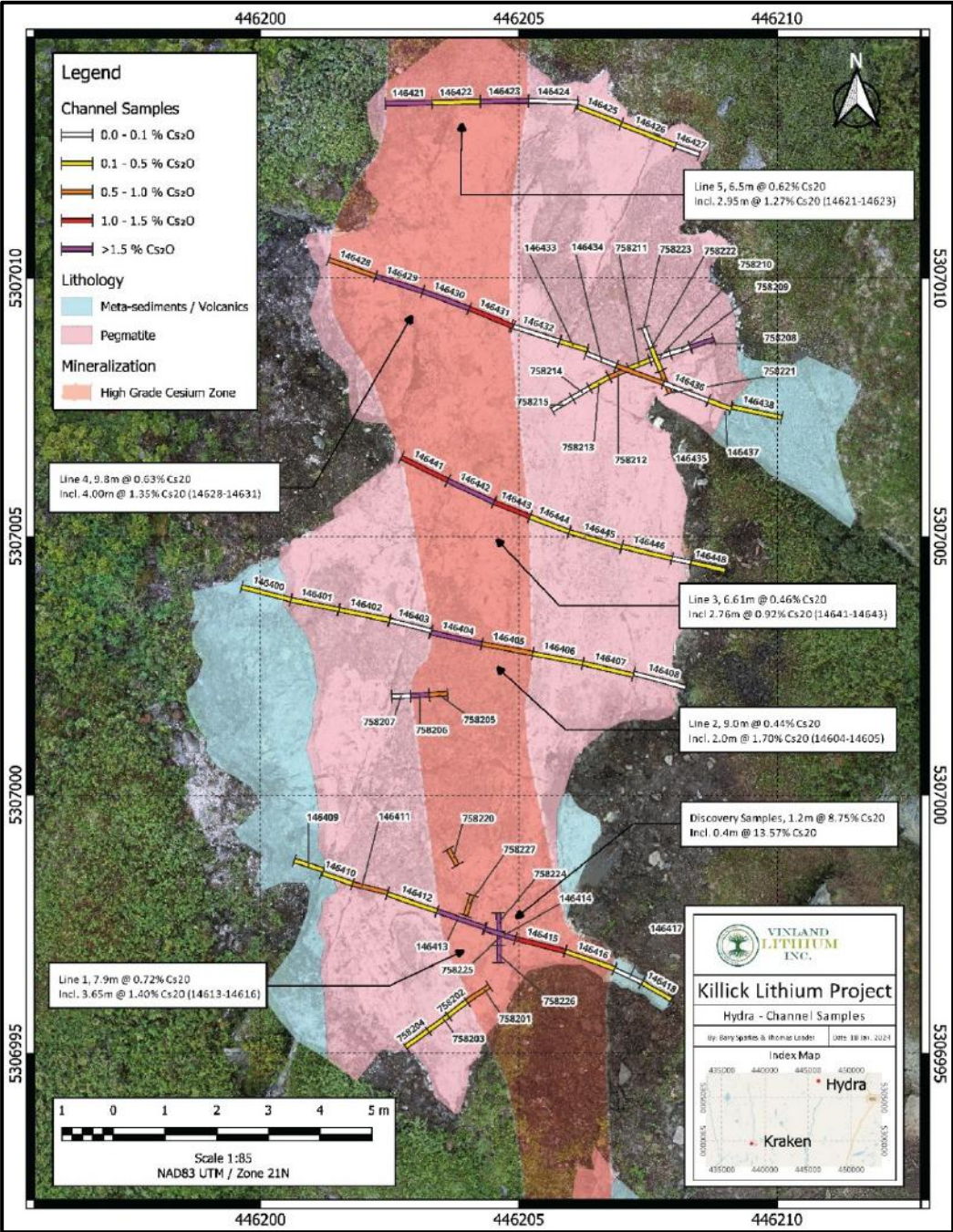
- Hydra Cesium discovery of pollucite-bearing LCT Pegmatite Dyke 12 km northeast of Kraken Pegmatite Field
- First ever cesium discovery in NL
- Initial channel sample results to 8.75% Cs₂O, 0.41% Li₂O, 0.025% Ta₂O₅ and 0.33% Rb₂O over 1.2 meters including 13.57% Cs₂O and 0.32% Li₂O over 0.4m
- 6 Short Drill holes in 2023 confirmed the presence of Lithium and Cesium below the outcrop over widths to 13.55 meters.
- New channel samples return multiple high-grade Cesium values confirming the potential of the dyke to host significant Cesium



First Core HY-23-01

LINE	Length	% Cs ₂ O
LINE 1	7.9m	0.72%
Incl.	3.65m	1.40%
LINE 2	9.0m	0.44%
Incl.	2.0m	1.70%
LINE 3	6.61m	0.46%
Incl.	2.76m	0.92%
LINE 4	9.8m	0.63%
Incl.	4.00	1.35%
LINE 5	6.5m	0.62%
Incl.	2.95m	1.27%

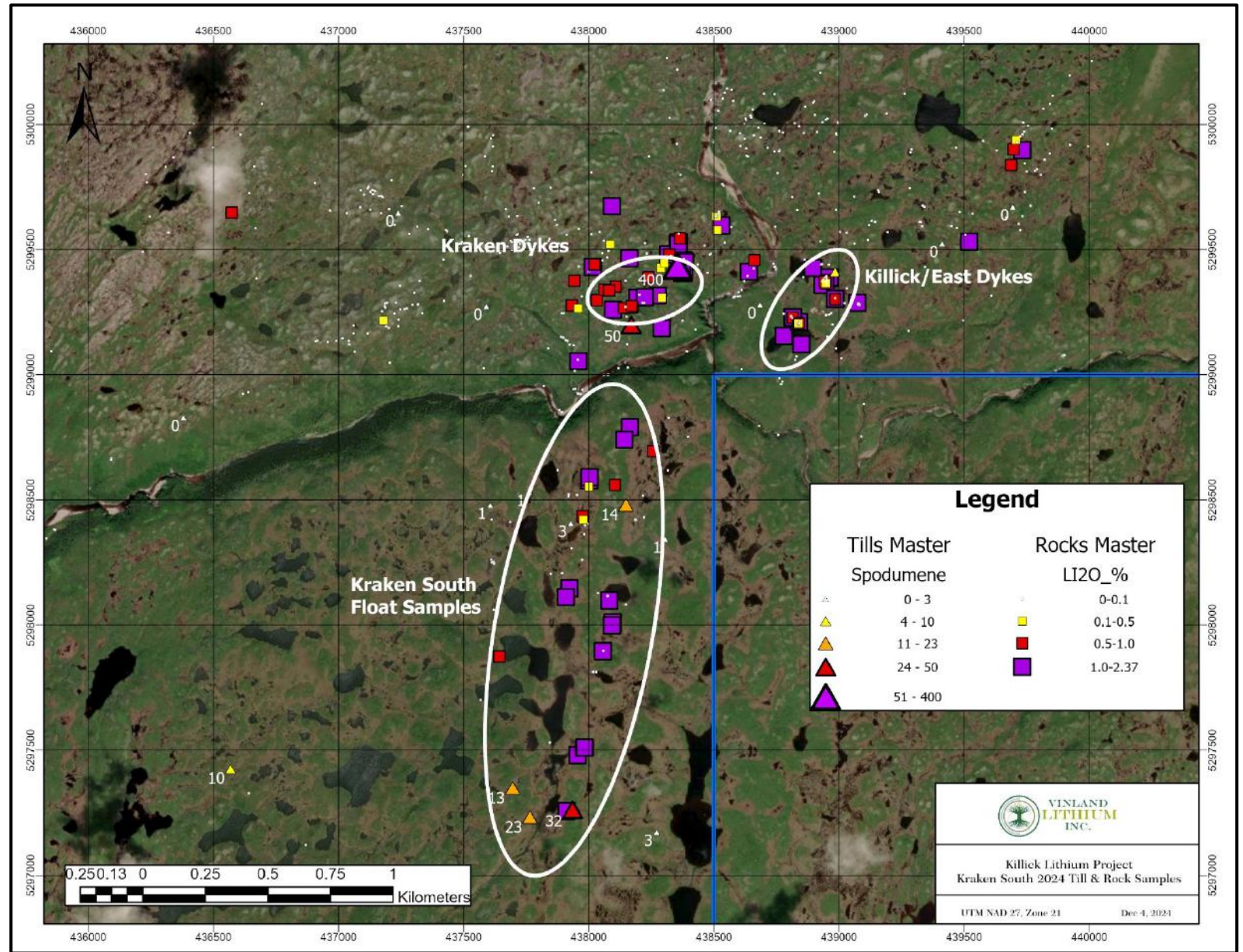
2023 Channel Samples



Kraken South Float

New high-grade float

- New discovery of highly anomalous spodumene pegmatite float south of the Kraken and Killick dykes
- 12 samples greater than 1% Li₂O, with values reaching 1.99% Li₂O
- Initial till sampling with spodumene grain counts to 32 – highly anomalous
- Additional work planned to follow up



Killick Lithium Project

MOVING FORWARD

- 2025 Program to commence in Q2
- Ground geophysics
- Additional Rock, Soil and Till Geochemical Sampling
- Diamond Drilling possible for Summer-Fall
- Continued collaboration with multi-disciplinary Critical Minerals Research Initiatives



ACKNOWLEDGEMENTS

- James Conliffe, Donnelly Archibald, Kiersty Malay, Maria O'Neil and many others at GSN, St. Francis Xavier, Memorial University of NL participating in the Critical Minerals Research Initiative
- Goowiddy Geoscience (Heather-Tom Loader)
- Legacy Exploration Services
- Sean O'Brien – Far Eastern Geoscience
- Newfoundland Helicopters
- South Coast Construction
- Town of Burgeo
- Junior Exploration Assistance Program (JEA), Mineral Lands Division, Exploration Approvals
- Former Provincial Minister of Industry, Energy and Technology - Honorable Andrew Parsons
- Former Federal Minister of Rural Economic Development and ACOA – Honorable Gudie Hutchings



Left-Right: Tim Froude, Sokoman Minerals Corp. President and CEO, Former Honorable Andrew Parsons, Stephen Stares Benton Resources President and CEO,



Left: Former Honorable Gudie Hutchings, Right: Vinland VP Exploration Barry Sparkes

