

ABOUT US

Your Trusted Partner for Scalable Mobile Apps

We're a close-knit team of senior iOS and Android developers, Architects and Product owner, UX/UI Designer - delivering high-quality app solutions with a strong focus on user experience, technical depth, and fast iteration cycles."

Location
Frankfurt (HQ) & Lisbon (Development)

Team size
6-8 Core Developer



CASE STUDY

Powering the Future of Charging – For Porsche, Audi & Co.

We helped build a mobile EV charging experience used across Volkswagen brands: Audi, Škoda, Cupra, and Porsche.

CLIENT
Porsche / Audi

PROJECT DURATION
4 years (2021–2025)



Result

Launched across **10+** countries

100,000+ active users

99.8% crash-free sessions

High User **Satisfaction**

Efficiency and Scalability

Smart Features Real Impact

- | | |
|---|--|
| <p>01 Next-Generation Wallbox Integration</p> <ul style="list-style-type: none"> Seamless onboarding for smart wallboxes with PV Charging and Surplus Charging. Scalable and future-proof solution to support upcoming wallbox models. | <p>02 Smart Charging Technologies</p> <ul style="list-style-type: none"> PV Forecast Charging: Uses solar panel data, location, and weather to optimize charging schedules. PV Surplus Charging: Uses live data from Modbus meters to maximize charging potential. Dynamic Rate Charging: Adjusts charging profiles in real time to reduce costs with dynamic electricity tariffs. |
| <p>03 Cost-Optimized Charging (Vehicle Feature)</p> <ul style="list-style-type: none"> Enables cars to plan charging based on the user's electricity plan. Fixed rate (constant pricing) Multi-fixed rate (time-based pricing) Dynamic rate (variable pricing) | <p>04 Home & Public Charging Management</p> <ul style="list-style-type: none"> Complete charging history tracking for cost monitoring. Multiple date range selection and filtering. Brand-specific UI integration for a cohesive experience. |
| <p>05 Wallbox Management</p> <ul style="list-style-type: none"> Easy pairing, updating, and management of home wallbox sessions. | <p>06 Wallet Integration</p> <ul style="list-style-type: none"> Centralized overview and management of charging cards. |



TESTIMONIAL

Trusted by Automotive Leaders

We take pride in building long-term partnerships based on trust, speed, and technical excellence. Here's what our clients have to say about working with us.

“The MAG team delivered exactly what we needed: fast, reliable, and with deep technical understanding of our systems. Their contribution was key to bringing the app to market on time.”

Product Owner, Porsche E-Mobility



PROCESS

A Proven Process That Delivers

Our agile, transparent workflow ensures fast iterations, clear communication, and high-quality results—every time.

- | | | | |
|---|--|--|---|
| <p>Agile (Scrum, Kanban, SAFe)</p> <p>We adapt our development approach to your organization's preferred agile framework—whether that's Scrum, Kanban, or SAFe. This flexibility allows us to integrate seamlessly with your internal workflows while ensuring iterative delivery, early validation, and continuous improvement throughout the project lifecycle.</p> <p>01</p> | <p>Daily Standups & 2-Week Sprints</p> <p>We run daily standup meetings to stay aligned, remove blockers, and maintain a high development velocity. Our work is organized into focused 2-week sprints, enabling frequent progress updates, consistent feature releases, and the ability to quickly pivot based on feedback or changing priorities.</p> <p>02</p> | <p>Transparent Workflows (Jira, Confluence, Slack)</p> <p>We keep communication open and processes transparent through tools like Jira for task tracking, Confluence for documentation, and Slack for day-to-day coordination. Our clients are always in the loop, with clear visibility into timelines, deliverables, and development progress.</p> <p>03</p> | <p>Async & Remote-Friendly</p> <p>Our team is structured to operate efficiently across time zones and work environments. With asynchronous communication and well-documented processes, we ensure progress doesn't stop when someone logs off. This makes us a reliable partner for distributed teams and fast-moving product environments.</p> <p>04</p> |
|---|--|--|---|

TECHNOLOGY

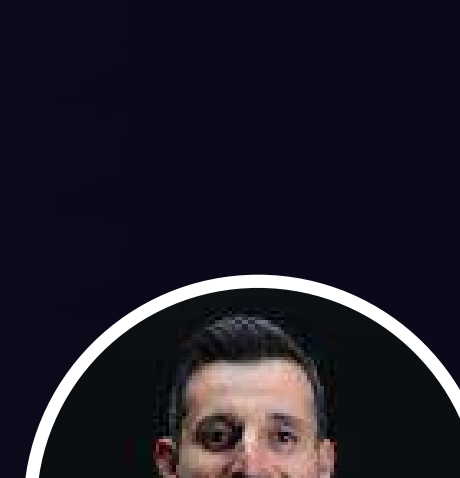
Modern Tech for High-Performance Apps

We work with a modern, battle-tested tech stack that ensures performance, scalability, and long-term maintainability. From clean code architecture to continuous integration, our tools and frameworks help us deliver fast, stable, and future-proof mobile applications.

- | | | | | |
|---|--|---|--|---|
| <p>iOS Development</p> <ul style="list-style-type: none"> Swift SwiftUI & UIKit Combine | <p>Android Development</p> <ul style="list-style-type: none"> Kotlin Jetpack MVVM Architecture | <p>Backend & Tools:</p> <ul style="list-style-type: none"> Firebase GraphQL Retrofit Bitrise (CI/CD) GitHub | <p>Project Management</p> <ul style="list-style-type: none"> Jira Confluence Slack | <p>Quality Assurance</p> <ul style="list-style-type: none"> UI Testing Unit Testing Crashlytics |
|---|--|---|--|---|

CONTACT US

Let's explore how we can support your next mobile product.



Cel: 0176 25302805
mail: apo@consulting-mag.de
web: www.consulting-mag.de