

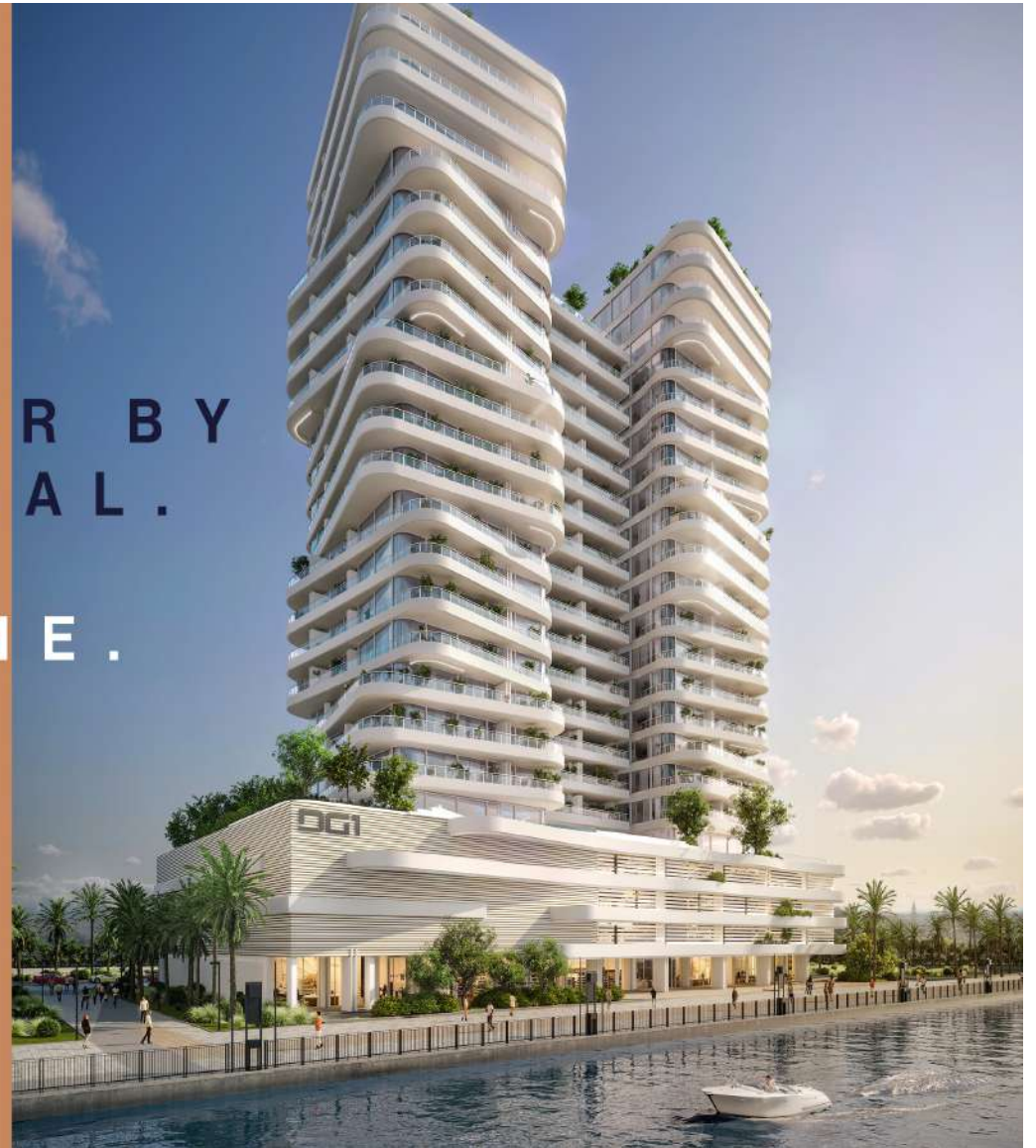


DC1

FOR
VISIONARIES
ONLY

THIS IS NOT
ANOTHER TOWER BY
THE DUBAI CANAL.

THIS IS THE ONE.
THIS IS DG1.



LAST UNITS RELEASED



DG1 represents the **FIRST** of a series of exclusive luxury residences with the ultimate architecture, the ultimate location and the ultimate interior specifications.



D O N ' T M I S S O U T O N L I V I N G B Y T H E D U B A I C A N A L



ICONIC DESIGN. EUROPEAN
SPECS. ULTIMATE PRIVACY.

Now is the perfect time to secure
your place in the heart of Dubai.

Don't miss out on the last
remaining units in DG1, only a few
studios, 1, 2, and 3-bedrooms left!

Contact us today to claim your
new home by the Dubai Canal.





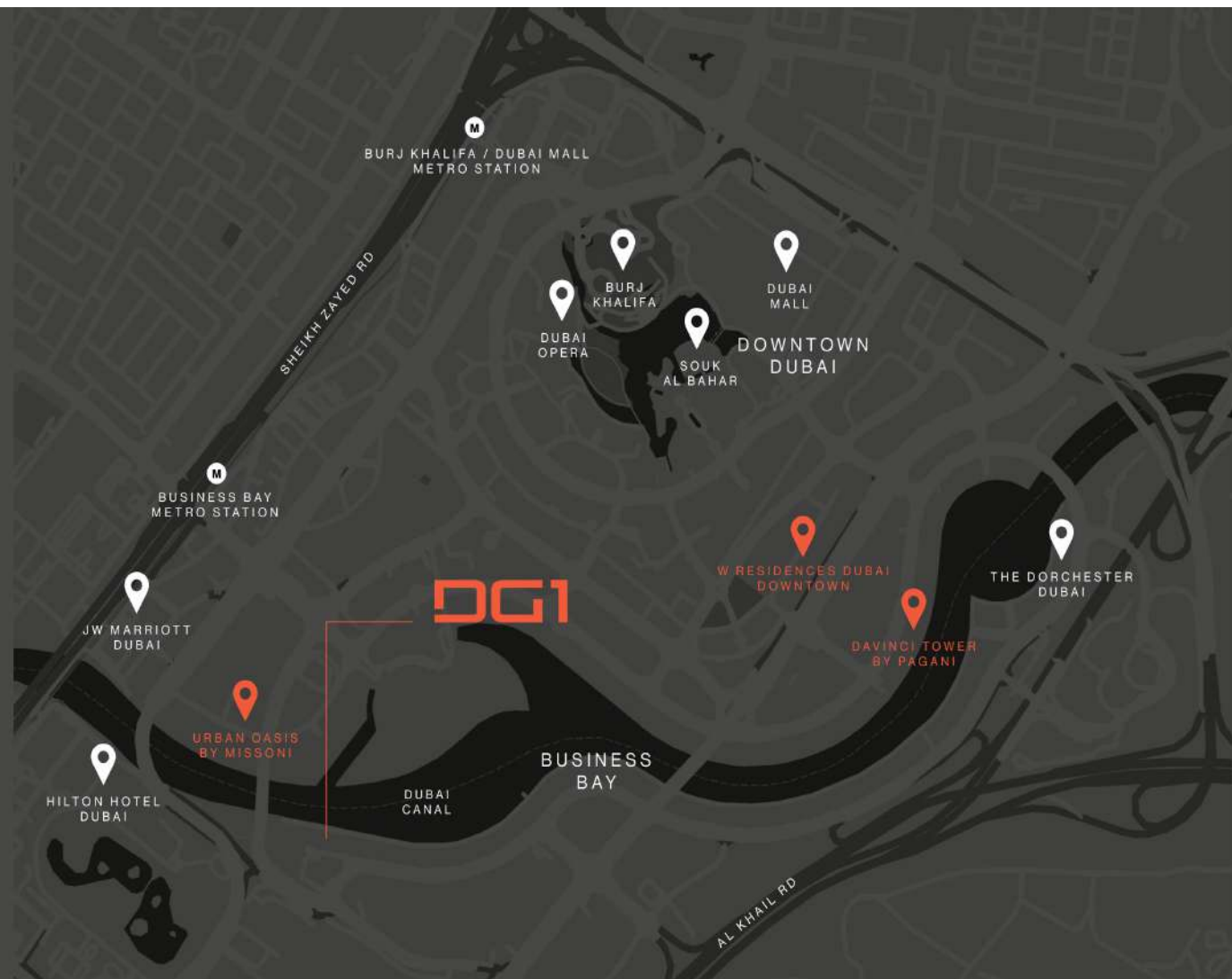
PRIME LOCATION

DG1 is located in the heart of Business Bay directly on Dubai Canal, where stunning views of the city and the water will impress the residents and their guests. The units enjoy North and East/West views, all of them facing Downtown Dubai and Burj Khalifa.

LOCATION

The strategic location of DG1 grants an unbelievable proximity to all that matters. With Burj Khalifa, Dubai Mall and Dubai Opera just a few steps away, and easy access to main roads like Sheikh Zayed Rd, Al Khail Rd and Meydan Rd, DG1 truly embodies the vibrant soul of the city.

| | |
|-----------|---------------------------------|
| 4 MIN TO | 📍 URBAN OASIS BY MISSONI |
| 4 MIN TO | 📍 HILTON HOTEL DUBAI |
| 4 MIN TO | 📍 JW MARRIOTT DUBAI |
| 5 MIN TO | 📍 THE DUBAI OPERA |
| 5 MIN TO | 📍 DAVINCI TOWER BY PAGANI |
| 6 MIN TO | 📍 BURJ KHALIFA |
| 6 MIN TO | 📍 THE DUBAI MALL |
| 6 MIN TO | 📍 THE DORCHESTER DUBAI |
| 7 MIN TO | 📍 W RESIDENCES DUBAI - DOWNTOWN |
| 9 MIN TO | 📍 SOUK AL BAHAR |
| 12 MIN TO | 📍 DUBAI INTERNATIONAL AIRPORT |





B R E A T H T A K I N G V I E W S

Every studio enjoys stunning vistas of Burj Khalifa, Downtown Dubai, and the Dubai Canal, enhanced by staggered curved balconies.



BURJ KHALIFA &
DOWNTOWN VIEWS





NORTH-EAST DAY VIEW



NORTH-EAST NIGHT VIEW



NORTH-WEST NIGHT VIEW





CRAFTED BY GENSLER ARCHITECTS

The architecture fully reflects the dynamic attitude of DG1. Standing out from the cluttered panorama as it recalls a piece of art rather than a conventional tower.

Crafted by Gensler Architects, the most avantgarde designers of our time, the DG1 tower embodies a shape that reshapes the city around it. A sculpture to inhabit, giving every floor a new perspective of the world.





T H E W O N D E R I N S I D E

In the building, a great variety of residences in terms of spaces and sizes is conceived to satisfy every kind of need. Style, comfort and luxury are what make these apartments truly unique: decorated with a classy and contemporary taste, each with a private balcony to enjoy the impressive views.











EUROPEAN SPECIFICATIONS

Experience the finest in European design with marble interiors, high-end kitchen fittings, and floor-to-ceiling windows that flood your space with natural light.



THE ULTIMATE
PREMIUM
AMENITIES



AMENITIES



Grand Lobby Lounge



Spacious Gym



Yoga Studio



Multi-purpose Hall



Infinity Pool with Burj Khalifa view



Sky Garden





PRIVACY ASSURED

No retail spaces in the building
to ensure your peace of mind
and privacy.



PROJECT
UNIT MIX

| BEDROOM TYPES | MIN (Sqft) | MAX (Sqft) |
|---------------|------------|------------|
| STUDIO | 451 | 501 |
| 1 BR | 821 | 2,538 |
| 2 BR | 1,138 | 1,859 |
| 3 BR | 1,596 | 2,416 |



WIDER
FRONTAGE
OVER
LOOKING
THE WATER



PROJECT DETAILS

Project Name

DG1

Location

Business Bay

Building Configuration

B+G+4P+19

No of Units

249

Floor Size Range

16,017 Sqft

Anticipated Completion Date

December 2027

Anticipated Service Charges

15-16 AED/Sqft

Unit Type

Unfurnished

Typical Ceiling Height

3.3m

No. of Elevators

5

White goods / Appliances

Freestanding fridge / Hob /
Oven / Washing machine / Dryer



DG1

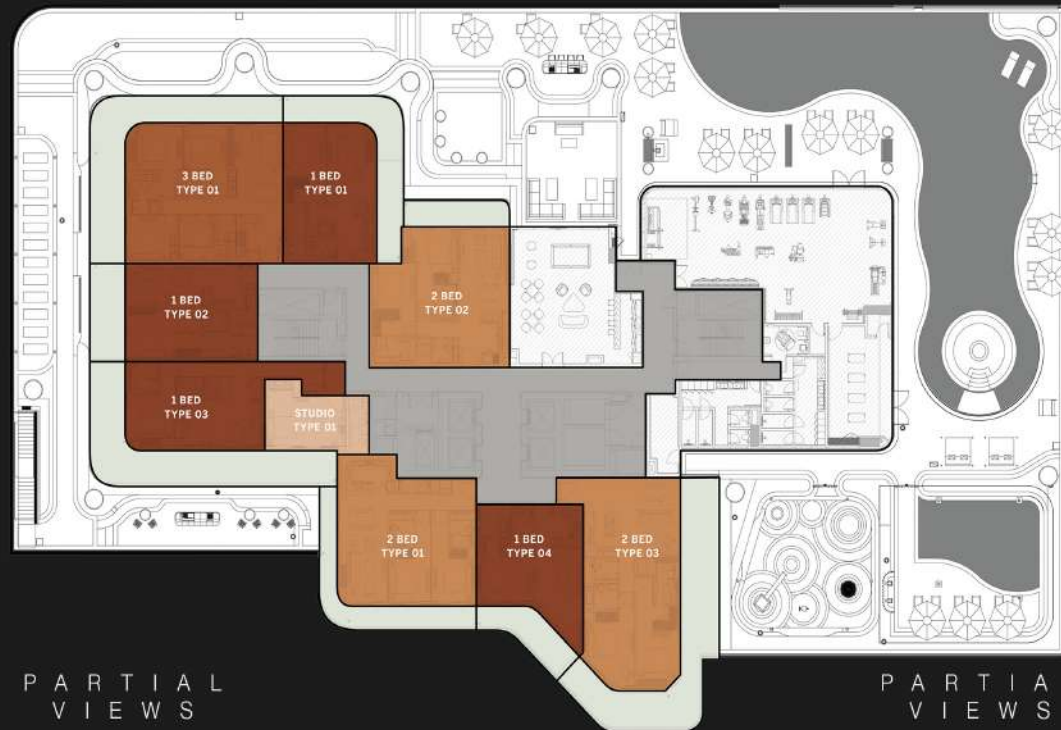
FLOOR PLANS



DUBAI CANAL

TYPICAL FLOOR PLAN GARDEN SUITES

LEVEL
01



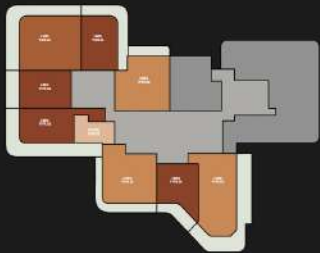
- STUDIO
- TWO BEDROOMS
- ONE BEDROOM
- THREE BEDROOMS

Disclaimer: All pictures, plans, layouts, information, data and details included in this brochure are indicative only and may change at any time up to the final 'as built' status in accordance with final design of the project, regulatory approvals and planning permissions. All accessories and interior finishes such as wallpaper, chandeliers, furniture, electronics, white goods, curtains, hard and soft landscaping, pavements, features, gym, swimming pool(s) and other elements displayed in the brochure, or within the show apartment or between the plot boundary and the unit, are not part of the unit and are shown for illustrative purposes only.

DUBAI CANAL

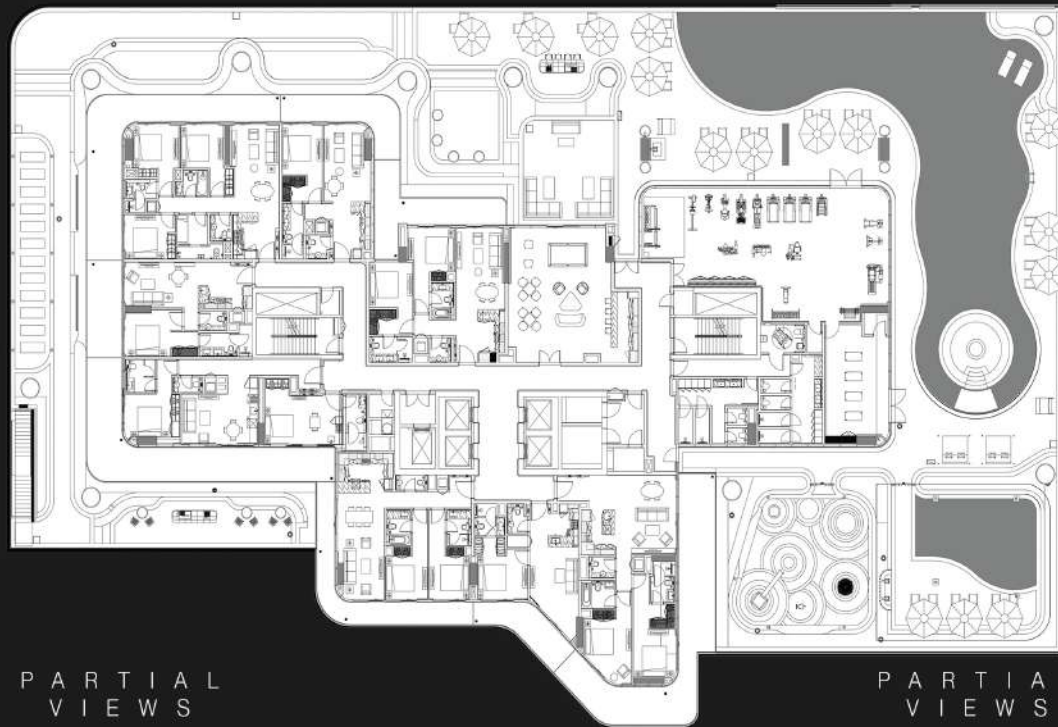
TYPICAL FLOOR PLAN GARDEN SUITES

LEVEL
01



- STUDIO
- TWO BEDROOMS
- ONE BEDROOM
- THREE BEDROOMS

Disclaimer: All pictures, plans, layouts, information, data and details included in this brochure are indicative only and may change at any time up to the final 'as built' status in accordance with final design of the project, regulatory approvals and planning permissions. All accessories and interior finishes such as wallpaper, chandeliers, furniture, electronics, white goods, curtains, hard and soft landscaping, pavements, features, gym, swimming pool(s) and other elements displayed in the brochure, or within the show apartment or between the plot boundary and the unit, are not part of the unit and are shown for illustrative purposes only.



PARTIAL
VIEWS

PARTIAL
VIEWS

CITY VIEWS

DUBAI CANAL

TYPICAL FLOOR PLAN 01A

LEVELS

02 - 04, 09 - 12



PARTIAL
VIEWS

PARTIAL
VIEWS

CITY VIEWS

- STUDIO
- ONE BEDROOM
- TWO BEDROOMS
- THREE BEDROOMS

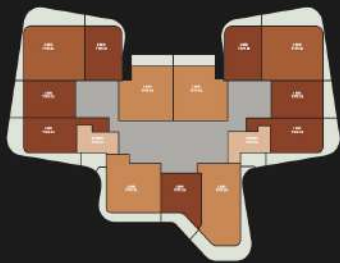
Disclaimer: All pictures, plans, layouts, information, data and details included in this brochure are indicative only and may change at any time up to the final 'as built' status in accordance with final design of the project, regulatory approvals and planning permissions. All accessories and interior finishes such as wallpaper, chandeliers, furniture, electronics, white goods, curtains, hard and soft landscaping, pavements, features, gym, swimming pool(s) and other elements displayed in the brochure, or within the show apartment or between the plot boundary and the unit, are not part of the unit and are shown for illustrative purposes only.

DUBAI CANAL

TYPICAL FLOOR PLAN 01A

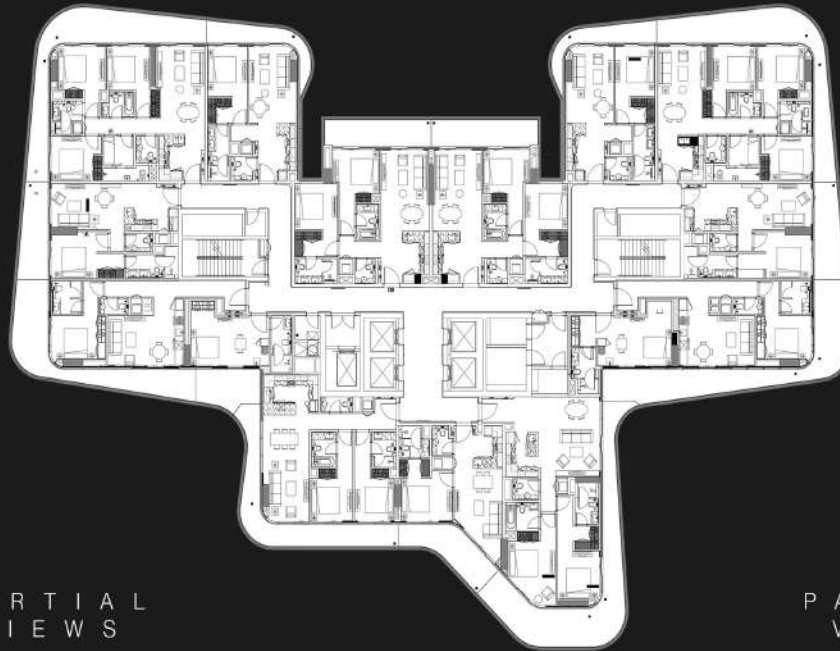
LEVELS

02 - 04, 09 - 12



- STUDIO
- TWO BEDROOMS
- ONE BEDROOM
- THREE BEDROOMS

Disclaimer: All pictures, plans, layouts, information, data and details included in this brochure are indicative only and may change at any time up to the final 'as built' status in accordance with final design of the project, regulatory approvals and planning permissions. All accessories and interior finishes such as wallpaper, chandeliers, furniture, electronics, white goods, curtains, hard and soft landscaping, pavements, features, gym, swimming pool(s) and other elements displayed in the brochure, or within the show apartment or between the plot boundary and the unit, are not part of the unit and are shown for illustrative purposes only.



PARTIAL
VIEWS

PARTIAL
VIEWS

CITY VIEWS

DUBAI CANAL

TYPICAL FLOOR PLAN 01B

LEVELS

05 - 08, 13 - 15



PARTIAL
VIEWS

PARTIAL
VIEWS

CITY VIEWS

- STUDIO
- ONE BEDROOM
- TWO BEDROOMS
- THREE BEDROOMS

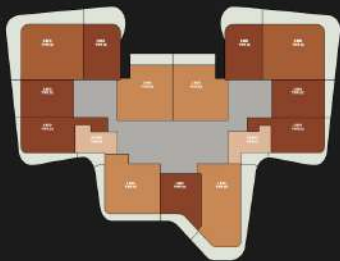
Disclaimer: All pictures, plans, layouts, information, data and details included in this brochure are indicative only and may change at any time up to the final 'as built' status in accordance with final design of the project, regulatory approvals and planning permissions. All accessories and interior finishes such as wallpaper, chandeliers, furniture, electronics, white goods, curtains, hard and soft landscaping, pavements, features, gym, swimming pool(s) and other elements displayed in the brochure, or within the show apartment or between the plot boundary and the unit, are not part of the unit and are shown for illustrative purposes only.

DUBAI CANAL

TYPICAL FLOOR PLAN 01B

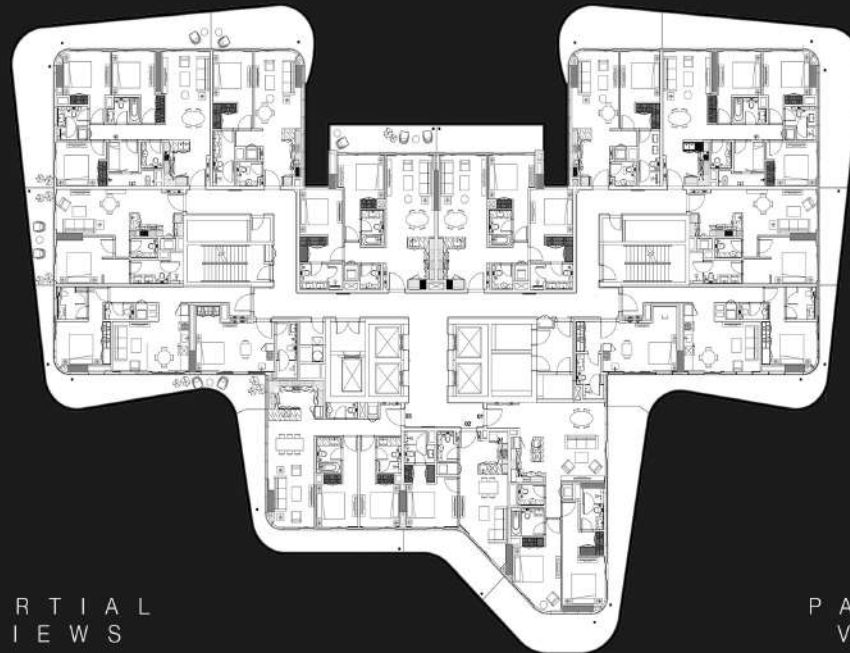
LEVELS

05 - 08, 13 - 15



- STUDIO
- TWO BEDROOMS
- ONE BEDROOM
- THREE BEDROOMS

Disclaimer: All pictures, plans, layouts, information, data and details included in this brochure are indicative only and may change at any time up to the final 'as built' status in accordance with final design of the project, regulatory approvals and planning permissions. All accessories and interior finishes such as wallpaper, chandeliers, furniture, electronics, white goods, curtains, hard and soft landscaping, pavements, features, gym, swimming pool(s) and other elements displayed in the brochure, or within the show apartment or between the plot boundary and the unit, are not part of the unit and are shown for illustrative purposes only.



PARTIAL
VIEWS

PARTIAL
VIEWS

CITY VIEWS

DUBAI CANAL

TYPICAL FLOOR PLAN SKY SUITES

LEVEL

16

DIRECT ACCESS TO
THE SKY GARDEN



- STUDIO
- TWO BEDROOMS
- ONE BEDROOM
- THREE BEDROOMS

PARTIAL
VIEWS

PARTIAL
VIEWS

CITY VIEWS

Disclaimer: All pictures, plans, layout, information, data and details included in this brochure are indicative only and may change at any time up to the final built status in accordance with final designs of the project, regulatory approvals and planning permissions. All accessories and interior finishes such as wallpaper, chandeliers, furniture, electronics, white goods, curtains, hard and soft landscaping, pavements, fountains, gym, swimming pool(s) and other elements displayed in the brochure, or within the show apartment or between the plot boundary and the unit, are not part of the unit and are shown for illustrative purposes only.

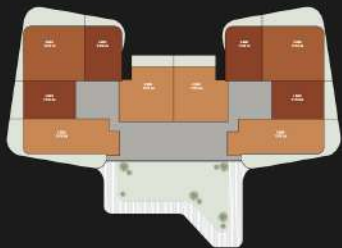
DUBAI CANAL

TYPICAL FLOOR PLAN SKY SUITES

LEVEL

16

DIRECT ACCESS TO
THE SKY GARDEN



- STUDIO
- ONE BEDROOM
- TWO BEDROOMS
- THREE BEDROOMS

Disclaimer: All pictures, plans, layouts, information, data and details included in this brochure are indicative only and may change at any time up to the final 'as built' status in accordance with final design of the project, regulatory approvals and planning permissions. All accessories and interior finishes such as wallpaper, chandeliers, furniture, electronics, white goods, curtains, hard and soft landscaping, pavements, features, gym, swimming pool(s) and other elements displayed in the brochure, or within the show apartment or between the plot boundary and the unit, are not part of the unit and are shown for illustrative purposes only.



PARTIAL
VIEWS

PARTIAL
VIEWS

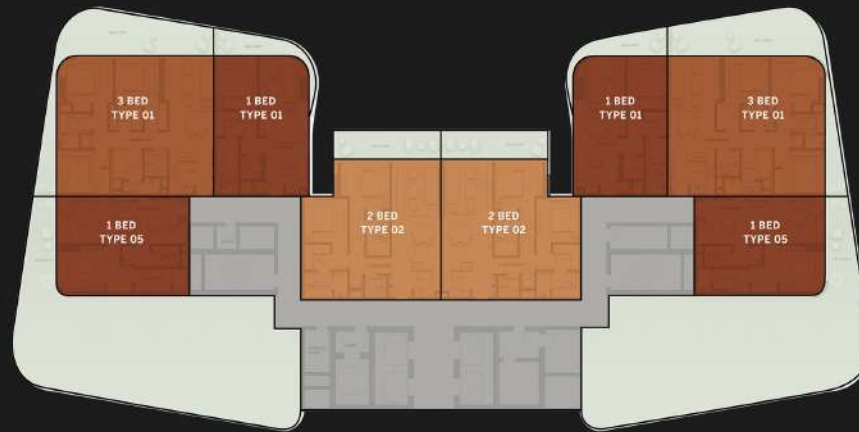
CITY VIEWS

DUBAI CANAL

TYPICAL FLOOR PLAN SKY SUITES

LEVEL
17

OVERLOOKING
THE SKY GARDEN



- STUDIO
- TWO BEDROOMS
- ONE BEDROOM
- THREE BEDROOMS

PARTIAL
VIEWS

PARTIAL
VIEWS

CITY VIEWS

Disclaimer: All pictures, plans, layouts, information, data and details included in this brochure are indicative only and may change at any time up to the final 'as built' status in accordance with final design of the project, regulatory approvals and planning permissions. All accessories and interior finishes such as wallpaper, chandeliers, furniture, electronics, white goods, curtains, hard and soft landscaping, pavements, features, gym, swimming pool(s) and other elements displayed in the brochure, or within the show apartment or between the plot boundary and the unit, are not part of the unit and are shown for illustrative purposes only.

DUBAI CANAL

TYPICAL FLOOR PLAN SKY SUITES

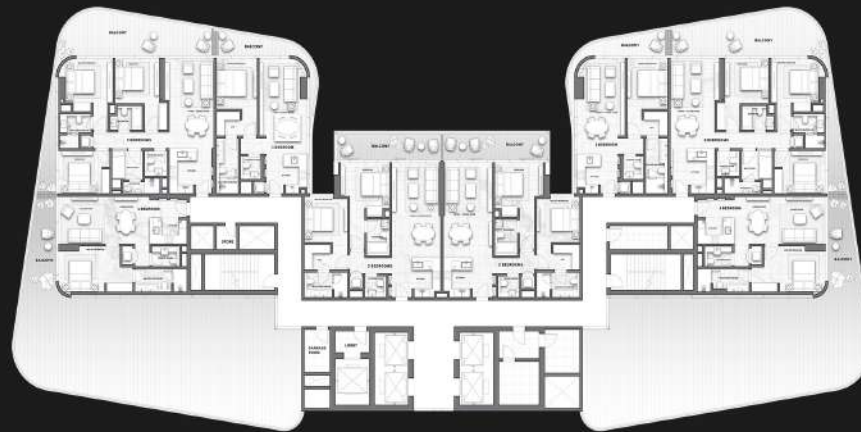
LEVEL
17

OVERLOOKING
THE SKY GARDEN



- STUDIO
- ONE BEDROOM
- TWO BEDROOMS
- THREE BEDROOMS

Disclaimer: All pictures, plans, layouts, information, data and details included in this brochure are indicative only and may change at any time up to the final 'as built' status in accordance with final design of the project, regulatory approvals and planning permissions. All accessories and interior finishes such as wallpaper, chandeliers, furniture, electronics, white goods, curtains, hard and soft landscaping, pavements, features, gym, swimming pool(s) and other elements displayed in the brochure, or within the show apartment or between the plot boundary and the unit, are not part of the unit and are shown for illustrative purposes only.



PARTIAL
VIEWS

PARTIAL
VIEWS

CITY VIEWS

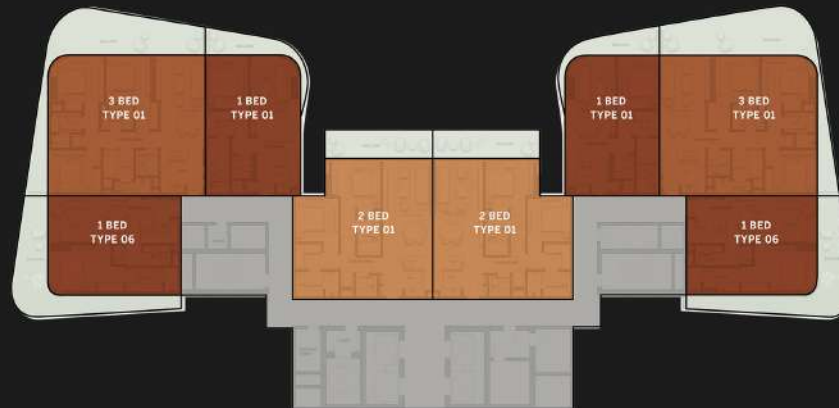
DUBAI CANAL

TYPICAL FLOOR PLAN SKY SUITES

LEVELS

18 - 19

OVERLOOKING
THE SKY GARDEN



- STUDIO
- TWO BEDROOMS
- ONE BEDROOM
- THREE BEDROOMS

PARTIAL
VIEWS

PARTIAL
VIEWS

CITY VIEWS

Disclaimer: All pictures, plans, layouts, information, data and details included in this brochure are indicative only and may change at any time up to the final 'as built' status in accordance with final design of the project, regulatory approvals and planning permissions. All accessories and interior finishes such as wallpaper, chandeliers, furniture, electronics, white goods, curtains, hard and soft landscaping, pavements, features, gym, swimming pool(s) and other elements displayed in the brochure, or within the show apartment or between the plot boundary and the unit, are not part of the unit and are shown for illustrative purposes only.

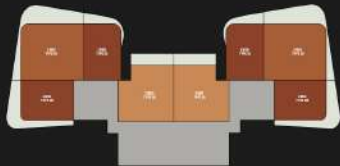
DUBAI CANAL

TYPICAL FLOOR PLAN SKY SUITES

LEVELS

18 - 19

OVERLOOKING
THE SKY GARDEN



- STUDIO
- ONE BEDROOM
- TWO BEDROOMS
- THREE BEDROOMS

Disclaimer: All pictures, plans, layouts, information, data and details included in this brochure are indicative only and may change at any time up to the final built status in accordance with final design of the project, regulatory approvals and planning permissions. All accessories and interior finishes such as wallpaper, chandeliers, furniture, electronics, white goods, curtains, hard and soft landscaping, pavements, features, gym, swimming pool(s) and other elements displayed in the brochure or within the show apartment or between the plot boundary and the unit, are not part of the unit and are shown for illustrative purposes only.



PARTIAL
VIEWS

PARTIAL
VIEWS

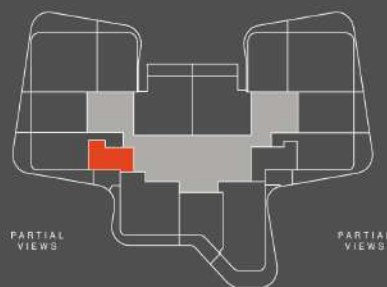
CITY VIEWS

STUDIO TYPE 01

LEVELS
1 - 15

BURJ KHALIFA

DUBAI CANAL



CITY VIEWS



| | | |
|---------------|--------------------|-----------------------|
| INTERNAL AREA | sqm 33 | sqft 355 |
| BALCONY | sqm 9 - 12 | sqft 97 - 129 |
| TOTAL | sqm 42 - 45 | sqft 452 - 484 |

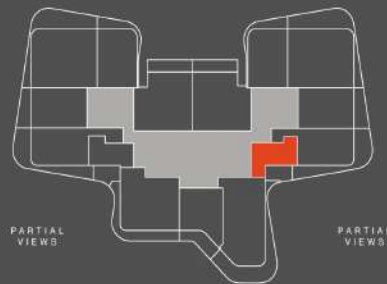
Disclaimer: All pictures, plans, layouts, information, data and details included in this brochure are indicative only and may change at any time up to the final 'as built' status in accordance with final designs of the project, regulatory approvals and planning permissions. All accessories and interior finishes such as wallpaper, chandeliers, furniture, electronics, white goods, curtains, hard and soft landscaping, pavements, features, lifts, swimming pools and all other elements displayed in the brochure or within the show apartment or between the plot boundary and the unit, are not part of the unit and are shown for illustrative purposes only.

STUDIO TYPE 02

LEVELS
3 - 15

BURJ KHALIFA

DUBAI CANAL



CITY VIEWS



| | | |
|---------------|--------------------|-----------------------|
| INTERNAL AREA | sqm 35 | sqft 484 |
| BALCONY | sqm 10 - 11 | sqft 108 - 118 |
| TOTAL | sqm 46 - 47 | sqft 420 - 796 |

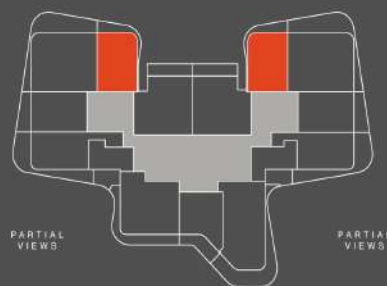
Disclaimer: All pictures, plans, layouts, information, data and details included in this brochure are indicative only and may change at any time up to the final 'as built' status in accordance with final designs of the project, regulatory approvals and planning permissions. All accessories and interior finishes such as wallpaper, chandeliers, furniture, electronics, white goods, curtains, hard and soft landscaping, pavements, features, gym, swimming pools(s) and other elements displayed in the brochure or within the show apartment or between the plot boundary and the unit are not part of the unit and are shown for illustrative purposes only.

1-BED TYPE 01

LEVELS
1 - 19

BURJ KHALIFA

DUBAI CANAL



CITY VIEWS



| | | |
|---------------|--------------------|-----------------------|
| INTERNAL AREA | sqm 66 | sqft 710 |
| BALCONY | sqm 10 - 22 | sqft 108 - 237 |
| TOTAL | sqm 76 - 88 | sqft 818 - 947 |

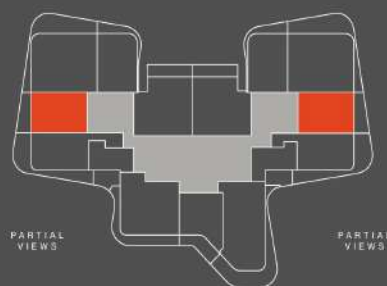
Disclaimer: All pictures, plans, layouts, information, data and details included in this brochure are indicative only and may change at any time up to the final 'as built' status in accordance with final designs of the project, regulatory approvals and planning permissions. All accessories and interior finishes such as wallpaper, chandeliers, furniture, electronics, white goods, curtains, hard and soft landscaping, pavements, features, gym, swimming pool(s) and other elements displayed in the brochure or within the show apartment or between the plot boundary and the unit are not part of the unit and are shown for illustrative purposes only.

1-BED TYPE 02

LEVELS
1 - 19



DUBAI CANAL



| | | |
|---------------|--------------------|-----------------------|
| INTERNAL AREA | sqm 66 | sqft 710 |
| BALCONY | sqm 13 - 15 | sqft 140 - 161 |
| TOTAL | sqm 79 - 81 | sqft 850 - 871 |

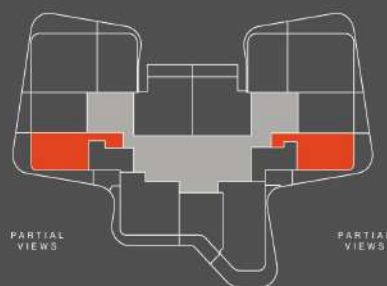
Disclaimer: All pictures, plans, layouts, information, data and details included in this brochure are indicative only and may change at any time up to the final 'as built' status in accordance with final designs of the project, regulatory approvals and planning permissions. All accessories and interior finishes such as wallpaper, chandeliers, furniture, electronics, white goods, curtains, hard and soft landscaping, pavements, features, gym, swimming pool(s) and other elements displayed in the brochure, or within the show apartment or between the plot boundary and the unit, are not part of the unit and are shown for illustrative purposes only.

1-BED TYPE 03

LEVELS
1 - 15

BURJ KHALIFA

DUBAI CANAL



CITY VIEWS



| | | |
|---------------|---------------------|---------------------------|
| INTERNAL AREA | sqm 71 | sqft 764 |
| BALCONY | sqm 27 - 49 | sqft 291 - 527 |
| TOTAL | sqm 98 - 120 | sqft 1,055 - 1,292 |

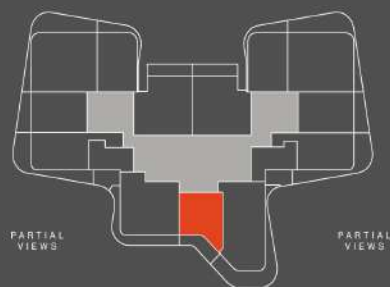
Disclaimer: All pictures, plans, layouts, information, data and details included in this brochure are indicative only and may change at any time up to the final 'as built' status in accordance with final designs of the project, regulatory approvals and planning permissions. All accessories and interior finishes such as wallpaper, chandeliers, furniture, electronics, white goods, curtains, hard and soft landscaping, pavements, features, gym, swimming pool(s) and other elements displayed in the brochure, or within the show apartment or between the plot boundary and the unit, are not part of the unit and are shown for illustrative purposes only.

1-BED TYPE 04

LEVELS
1 - 15

BURJ KHALIFA

DUBAI CANAL



CITY VIEWS



| | | |
|---------------|--------------------|-----------------------|
| INTERNAL AREA | sqm 60 | sqft 646 |
| BALCONY | sqm 14 - 15 | sqft 151 - 161 |
| TOTAL | sqm 74 - 75 | sqft 797 - 807 |

Disclaimer: All pictures, plans, layouts, information, data and details included in this brochure are indicative only and may change at any time up to the final 'as built' status in accordance with final designs of the project, regulatory approvals and planning permissions. All accessories and interior finishes such as wallpaper, chandeliers, furniture, electronics, white goods, curtains, hard and soft landscaping, pavements, features, gyms, swimming pool(s) and other elements displayed in the brochure or within the show apartment or between the plot boundary and the unit, are not part of the unit and are shown for illustrative purposes only.

1-BED TYPE 05

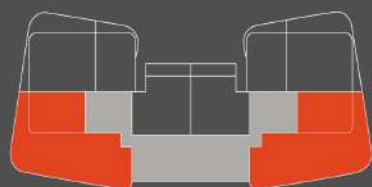
LEVEL
17



BURJ KHALIFA



DUBAI CANAL



PARTIAL
VIEWS

PARTIAL
VIEWS

CITY VIEWS



| | | |
|---------------|----------------|-------------------|
| INTERNAL AREA | sqm 62 | sqft 667 |
| BALCONY | sqm 167 | sqft 1,804 |
| TOTAL | sqm 230 | sqft 2,471 |

Disclaimer: All pictures, plans, layouts, information, data and details included in this brochure are indicative only and may change at any time up to the final 'as built' status in accordance with final designs of the project, regulatory approvals and planning permissions. All accessories and interior finishes such as wallpaper, chandeliers, furniture, electronics, white goods, curtains, hard and soft landscaping, pavements, features, gym, swimming pool(s) and other elements displayed in the brochure or within the show apartment or between the plot boundary and the unit, are not part of the unit and are shown for illustrative purposes only.

1-BED TYPE 06

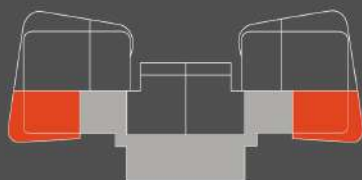
LEVELS
18 - 19



BURJ KHALIFA



DUBAI CANAL



PARTIAL
VIEWS

PARTIAL
VIEWS

CITY VIEWS



| | | |
|---------------|---------------|-----------------|
| INTERNAL AREA | sqm 62 | sqft 674 |
| BALCONY | sqm 27 | sqft 291 |
| TOTAL | sqm 90 | sqft 964 |

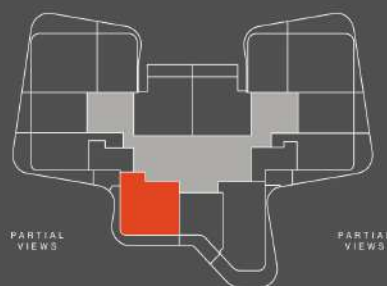
Disclaimer: All pictures, plans, layouts, information, data and details included in this brochure are indicative only and may change at any time up to the final 'as built' status in accordance with final designs of the project, regulatory approvals and planning permissions. All accessories and interior finishes such as wallpaper, chandeliers, furniture, electronics, white goods, curtains, hard and soft landscaping, pavements, features, lifts, swimming pool(s) and all other elements displayed in the brochure or within the show apartment or between the plot boundary and the unit, are not part of the unit and are shown for illustrative purposes only.

2-BEDS TYPE 01

LEVELS
1 - 15

BURJ KHALIFA

DUBAI CANAL



CITY VIEWS



| | | |
|---------------|---------------|--------------------|
| INTERNAL AREA | sqm 91 | sqft 980 |
| BALCONY | sqm 26 - 28 | sqft 279 - 302 |
| TOTAL | sqm 117 - 119 | sqft 1,259 - 1,281 |

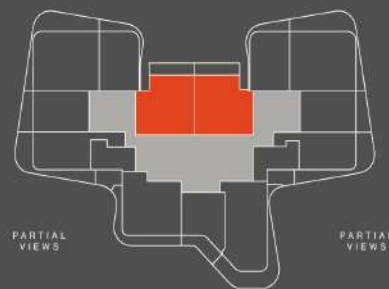
Disclaimer: All pictures, plans, layouts, information, data and details included in this brochure are indicative only and may change at any time up to the final 'as built' status in accordance with final designs of the project, regulatory approvals and planning permissions. All accessories and interior finishes such as wallpaper, chandeliers, furniture, electronics, white goods, curtains, hard and soft landscaping, pavements, features, gym, swimming pool(s) and other elements displayed in the brochure, or within the show apartment or between the plot boundary and the unit, are not part of the unit and are shown for illustrative purposes only.

2-BEDS TYPE 02

LEVELS
1 - 19

BURJ KHALIFA

DUBAI CANAL



CITY VIEWS



| | | |
|---------------|----------------|-------------------|
| INTERNAL AREA | sqm 92 | sqft 990 |
| BALCONY | sqm 14 | sqft 151 |
| TOTAL | sqm 106 | sqft 1,141 |

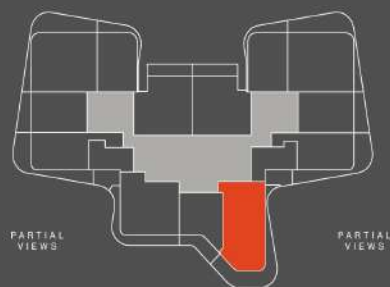
Disclaimer: All pictures, plans, layouts, information, data and details included in this brochure are indicative only and may change at any time up to the final 'as built' status in accordance with final designs of the project, regulatory approvals and planning permissions. All accessories and interior finishes such as wallpaper, chandeliers, furniture, electronics, white goods, out-fits, hard and soft landscaping, pavements, fixtures, gym, swimming pool(s) and other elements displayed in the brochure, or within the show apartment or between the plot boundary and the unit, are not part of the unit and are shown for illustrative purposes only.

2-BEDS TYPE 03

LEVELS
1 - 15

BURJ KHALIFA

DUBAI CANAL



CITY VIEWS



| | | |
|---------------|----------------------|---------------------------|
| INTERNAL AREA | sqm 107 | sqft 1,152 |
| BALCONY | sqm 39 - 46 | sqft 420 - 495 |
| TOTAL | sqm 146 - 153 | sqft 1,572 - 1,647 |

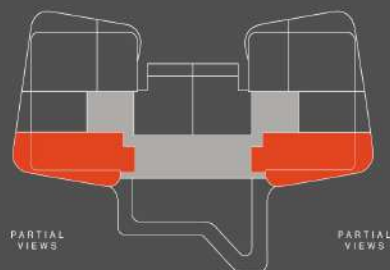
Disclaimer: All pictures, plans, layouts, information, data and details included in this brochure are indicative only and may change at any time up to the final 'as built' status in accordance with final designs of the project, regulatory approvals and planning permissions. All accessories and interior finishes such as wallpaper, chandeliers, furniture, electronics, white goods, curtains, hard and soft landscaping, pavements, features, lifts, swimming pool(s) and all other elements displayed in the brochure or within the show apartment or between the plot boundary and the unit, are not part of the unit and are shown for illustrative purposes only.

2-BEDS TYPE 04

LEVEL
16

BURJ KHALIFA

DUBAI CANAL



CITY VIEWS



| | | |
|---------------|----------------------|---------------------------|
| INTERNAL AREA | sqm 107 | sqft 1,152 |
| BALCONY | sqm 39 - 46 | sqft 420 - 495 |
| TOTAL | sqm 146 - 153 | sqft 1,572 - 1,647 |

Disclaimer: All pictures, plans, layouts, information, data and details included in this brochure are indicative only and may change at any time up to the final 'as built' status in accordance with final designs of the project, regulatory approvals and planning permissions. All accessories and interior finishes such as wallpaper, chandeliers, furniture, electronics, white goods, curtains, hard and soft landscaping, pavements, features, gym, swimming pool(s) and other elements displayed in the brochure or within the show apartment or between the plot boundary and the unit, are not part of the unit and are shown for illustrative purposes only.

3-BEDS TYPE 01

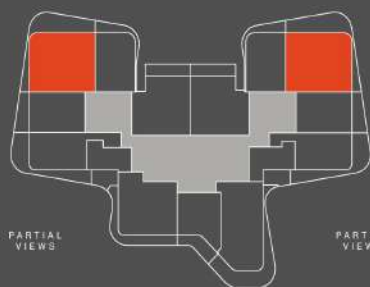
LEVELS
1 - 19



BURJ KHALIFA



DUBAI CANAL



CITY VIEWS



| | | |
|---------------|----------------------|---------------------------|
| INTERNAL AREA | sqm 112 | sqft 1,206 |
| BALCONY | sqm 35 - 53 | sqft 376 - 570 |
| TOTAL | sqm 147 - 165 | sqft 1,582 - 1,776 |

Disclaimer: All pictures, plans, layouts, information, data and details included in this brochure are indicative only and may change at any time up to the final 'as built' status in accordance with final designs of the project, regulatory approvals and planning permissions. All accessories and interior finishes such as wallpaper, chandeliers, furniture, electronics, white goods, curtains, hard and soft landscaping, pavements, features, lifts, swimming pool(s) and other elements displayed in the brochure or within the show apartment or between the plot boundary and the unit, are not part of the unit and are shown for illustrative purposes only.

YOUR LAST
CHANCE TO PUT
YOUR HANDS

ON DUBAI
CANAL UNITS