



The Do It All Cruiser





Fish, Cruise, Explore, & More

When we say “Do It All” we mean it.

Cutwater Boats are designed to ensure you have every feature you need to approach your adventure with confidence. You'll be just as comfortable cruising off-grid for weeks at a time as you will fishing with friends or spending a fun-filled day on the water with your family.

The Livingston Story

The executive team at Cutwater Boats represents an accumulative total of over 200 years of boating experience. Fluid Motion President, John Livingston has been kicking around fiberglass boats since before he could walk. His father and business partner, Dave Livingston built his first boat when he was 15 years old using plans he found in Popular Mechanics magazine. Not long after building the popular mechanics dinghy, Dave built his first hydroplane which he raced AND skied behind. During those early years, it was a regular occurrence for the neighbors to see Dave hauling wood back from the lumber store on his bike until he was finally old enough to get his driver's license.



After completing four years of service in the Navy, Dave designed and built what would soon become his first commercially successful vessel, his iconic design bearing the family name, the Livingston dinghy. After several successful years at the helm of Livingston, Dave eventually sold the company to Reinell. Over the years, he has created, modified or consulted for many boat manufacturers including Bayliner, Reinell, Wellcraft, Regal, Larson, and many more.



Dave's steady hand at the drafting table and experienced eye for design trends has helped propel Cutwater Boats to its current level of success. Dave works tirelessly designing new models for Cutwater and is continuously improving manufacturing techniques and facilities.

Quality is in Our DNA

A dependable build begins with quality materials. As a proud member of the American Boatbuilding Association, we have access to the highest quality materials in the industry.

When it comes to construction, a fiberglass boat is built from the outside in. The first step to form the hull begins with a high-quality HD gelcoat featuring best in-class UV resistance. We then follow up with a vinyl ester barrier coat which keeps the moisture out and provides industry leading blister protection. Woven roving and continuous glass fibers are then hand-laid to create a rock-solid running surface built handle the toughest marine conditions. To create a hull that is both strong and lightweight, we utilize custom fabricated gimbaled hull molds which allow the resin to be evenly distributed and achieve the perfect glass to resin ratio.

Once the hull is formed, it is permanently bonded with our 100% fiberglass stringer system which becomes the rigid backbone of the boat. Foam is then injected into key areas of the stringer system to reduce noise while underway.

With the stringer bonded to the hull, the cabin can be built upon this solid foundation. Next, our skilled carpenters and technicians install the interior components, electrical systems, plumbing, cabinetry and more to create the fully furnished cabin. Throughout the interior, every Cutwater Boat features high quality marine-grade materials such as Sunbrella fabrics and premium wood finishes.



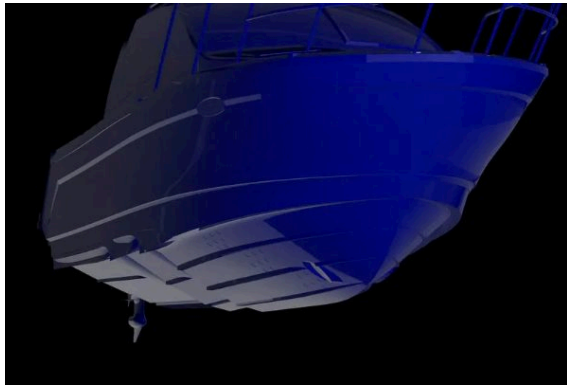


Factory Delivery Experience

Joining our family is a big deal, and that's why we offer our Factory Delivery Experience.

Our Factory Delivery Experience includes two distinct days of one-on-one training on your new boat. The first day is spent at the dock with a factory customer service representative, covering each and every system onboard the boat. The second day is spent on the water with our factory delivery captain learning how to operate and handle your new Cutwater Boat. Our job isn't complete until you're safely enjoying your new boat on the water.

Hull Design



Our outboard engine boats incorporate an advanced hull design to optimize efficiency, performance, and maneuverability. These features include an innovative combination of a steep deep-V hull for a smooth ride, a keel pad for planing stability, and reversed chines for quick planing and reduced cornering roll. The double-stepped hull increases efficiency and performance and reduces fuel consumption.



Our innovative hull design also incorporates our Laminar Flow Interrupter technology for smooth, positive cornering. Together, these refinements enable the Cutwater hull to deliver an ultra-smooth ride with superior performance.

A radical departure from conventional deep-V hull geometry, the revolutionary Cutwater Hull design incorporates a number of features that together deliver a smooth ride, straight tracking, agile, responsive performance, and maximum fuel economy. With all these advantages, each Cutwater model offers the range to expand your cruise horizons while providing exceptional comfort underway.

The Cutwater Lineup





Find Out More

Contact Us

506 44th St NW
Auburn, WA, 98001

Phone: (253) 839-5213

Fax: (253) 839-5218

Build Your Boat



Specifications

Engine Yamaha F250 outboard engine, electric steering (DES)
Length overall (motor down) 30' 10" | 9.4 m
Draft (motor down) 30" | 0.76 m
Beam 8' 6" | 2.59 m
Weight (dry w/engine) 6,200 lbs | 2,812 kg
Bridge clearance (mast down) 8' 7" | 2.62 m
Bridge clearance (mast up) 10' 3" | 3.12 m
Fuel capacity 116 U.S. Gal | 439.1 L
Water capacity 22 U.S. Gal | 83.3 L
Waste capacity 11 U.S. Gal | 41.6 L



The new C-248 Coupe from Cutwater Boats presents a beautiful, contemporary twist on a classic Downeast design. This versatile outboard-powered cruiser offers an abundance of features designed to make cruising, fishing, and entertaining fun and stress-free.

The C-248 C offers a 360-degree view from the helm as well as an innovative aft bulkhead window that opens, allowing the dinette seat to transform into a rear-facing cockpit seat. Onboard the C-248 C you'll enjoy all the comforts of home with a private stateroom, head, and galley featuring a sink with hot and cold water, stove top, microwave, and refrigerator/freezer.

The forward stateroom features wrap around seating and a high/low table that drops to complete the forward berth for a comfortable night's sleep. The main salon has a dinette for four that transforms into an additional berth for two. Below the dinette there is a mid-berth perfect for kids or additional storage.

Powered by a Yamaha 250 HP outboard, the C-248 C is fast and efficient. The double-stepped hull increases efficiency and performance, reduces fuel consumption, and contributes to her quick time to plane. The C-248 C hull also incorporates our Laminar Flow Interrupter technology for smooth, positive cornering.

The C-248 C comes comfortably equipped to cruise and play. Standard features include a navigation package starring the Garmin 943xsv GPS chartplotter with sonar, color Yamaha engine display, VHF radio, Bluetooth-enabled Fusion stereo system, LED lighting, marine head with holding tank, sport racks, built-in rod holders, fish box, integrated transom cooler, concealed ski tow, our built-in trailer lights, foldaway cockpit seating, cockpit bolster cushions, and much more.



Model Features

ADVANCED CUTWATER HULL

The C-248 C hull features an innovative combination of a steep, deep-V hull for a smooth ride, a keel pad for planing stability, and reversed chines for quick planing and reduced cornering roll. The double-stepped hull increases efficiency and performance and reduces fuel consumption while the laminar flow interrupters provide smooth, positive cornering performance.

9" GARMIN CHARTPLOTTER

Navigation is fun and accurate with a 9" Garmin Chartplotter with sonar. Easily monitor fuel flow, engine data, bottom conditions, GPS location, tides and much more.

MULTI-USE SEATING

The aft bulkhead window opens, and the dinette seat transforms to create a cockpit facing seat. A fold-down transom seat offers seating for two more.

POP-UP SKI PYLON

Who says a cruising boat can't do it all. With a pop-up ski pylon, you can tow a tube, skier or wakeboarder at destinations that many only dream of.

FULL GALLEY

A refrigerator & freezer, alcohol electric stove top, hot & cold galley sink, cutting board, and ample counter space & cabinetry makes for an efficient and fun use of space to prepare your meals.

RELIABLE YAMAHA OUTBOARD POWER

The C-248 C is powered by a Yamaha F250, which delivers outstanding performance and efficiency. A multifunction LCD displays key information such as RPMs and fuel flow. Shift and throttle controls are electronic

Performance

250 HP Yamaha F250 outboard, electric steering (DES)
Double stepped hull
Electric trim tabs
Laminar flow interrupters
Bow thruster
Trailerable - 8'6" beam

Accommodations &

Interior Comfort

Cabin drink holders
Curtains for privacy
Dinette (seats 4) converts to bed
Fusion stereo system (multi-zone)
Hatches, pilothouse roof
Hatches, stateroom, solar reflective
Indirect cabin lighting
LED lighting
Marine toilet w/ holding tank, pump out
Midship berth
Opening portlights
Private forward stateroom

Deck Features

Anchor package, 11 lb, 50' chain, 150' line
Bow beaching ladder, stainless steel
Bow pulpit
Forward line storage
Pop-up ski pylon
Sport racks, stainless steel
Swimming ladder, stainless steel
Swim step
Windlass, bow and helm controls

Cockpit

Built-in fish box/cooler
Cockpit cover, soft-top
Cockpit drink holders
Cockpit seating
Cockpit sink
Opening glass bulkhead w/ reversible seat
Transom entry door for boarding

Helm

Color engine display
Digital fuel flow data
Electronic shift and throttle control, single lever
9" Garmin navigation system w/ GPS and sonar
Helm drink holders
Helm seat, bolstered
USB charging ports
Windshield wipers, 2

Galley

Cutting board
Galley cabinets
Galley drawers
Microwave
Refrigerator/freezer
Sink with hot and cold water, with pull-out rinse faucet
Stove top, electric/alcohol

Mechanical & Electrical

AC Electrical panel
Batteries
Battery charger
DC electrical panel
Galvanic isolator
Inverter
Smart Plug Inlet and 30amp
Shorepower Cord

Safety

Carbon monoxide detectors
Courtesy lights
Electric horn
Illuminated compass
Integrated trailer lights
Navigation lights
VHF radio, DSC capable

Construction

Bonded electrical system
Foam-filled fiberglass stringer grid system
Seawater strainer(s)
Self bailing cockpit
Stainless steel cleats, rails, hardware
Vinylester barrier coat

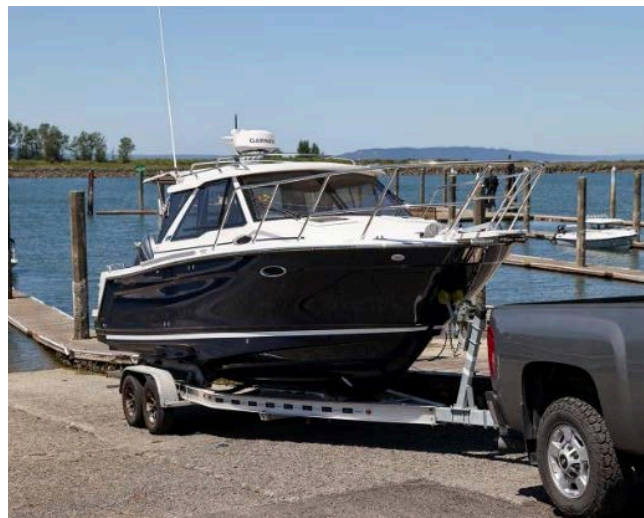
Options

Hull Color Upgrade | \$3,860
Aft cockpit sun shade with sunset shade | \$1,425
Autopilot with remote | \$5,955
Aluminum tandem axle trailer with electric/hydraulic brakes, spare tire/bracket | \$15,880
Auxiliary Motor Package: 9.9 HP, electric steering with wireless remote, bracket | \$6,380
Diesel Heater, forced air furnace | \$5,450
Downrigger plates and plugs | \$410
Climate control (heat and air conditioning, dockside only unless equipped with Lithium (LiFePO4) battery upgrade) | \$4,960
Entertainment package, TV 12v | \$830
Electric BBQ grill, removable | \$1,105
Factory Delivery Experience | \$2,755
Garmin, xHD radar | \$2,755
Lithium (LiFePO4) battery upgrade (enables inverter powered air conditioning/rev. cycle heat) | \$11,025
Livewell and raw water wash down | \$440
Macerator discharge | \$570
Outboard bracket, auxiliary stainless | \$770
Safety kit (fenders, lines, flares, fire extinguisher, first aid kit, life jackets, boat hook) | \$940
Underwater lights | \$440

Options, freight & taxes extra. Prices, specifications, equipment, and options may change without notice. Information on this sheet should not be used for navigation.

January 23, 2026

[Model Page](#)





C-288.C

Specifications

Engine Twin 250 HP Yamaha F250 outboards, electric steering (DES)
LOA (motors down) 33' 7" | 10.24 m
LOA (motors up) 36' 3" | 11.05 m
Draft (motors down, approx) 33" | 0.84 m
Draft (motors up, approx) 23" | 0.58 m
Beam 10' | 3.05 m
Weight, dry 10,000 lbs | 4,536 kg
Bridge clearance (mast down) 9' 2" | 2.79 m
Bridge clearance (mast up) 11' | 3.35 m
Fuel Capacity 200 US gal | 757.1 L
Water Capacity 41 US gal | 155.2 L
Waste Capacity 25 US gal | 94.6 L



True to the Do-It-All nature of Cutwater Boats, the C-288 C is loaded with premium features as standard equipment, providing unsurpassed versatility. The contemporary Downeast design is set to turn heads wherever she'll roam, and avid cruisers will appreciate the abundant power produced by the twin counter-rotating Yamaha F250 outboards.

The C-288's advanced hull design delivers the perfect blend of performance, comfort and efficiency thanks to the double-stepped deep-V hull, Laminar Flow Interrupters and a stout 10' beam. The generous beam maximizes cabin area and on-water stability while remaining trailerable.

Boarding is made safe and easy with our Clear-Path swim platform which fully wraps around the outboard engines. In the cockpit, you'll find ample storage, rod holders, beverage holders, livewell, electric grill and more. The cockpit transforms into a social space providing seating for six with the convertible sunset seat, fold down gunwale seats and an opening glass bulkhead lounge. The overhead solar panel and sport racks allow for extended cruising and storage for SUPs, kayaks, bikes and more.

Step inside the salon and you'll find your home on the water, with a full galley featuring a stovetop, stainless-steel sink with pull-out rinse faucet, fridge/freezer combo, microwave convection oven, cabinetry, and a wine/water cooler. The helm is a Captain's dream with a Garmin chartplotter, Autopilot, sonar, xHD radar, color engine displays and a twin-lever electronic throttle control.

You'll remain comfortable in any weather with the climate-controlled interior featuring sliding overhead hatches and opening portlights. Separate accommodations for six include a forward stateroom, spacious mid-berth and a private head with shower. The C-288 Coupe is the complete package for extended cruising, fishing, remote work, and more.



Model Features

GARMIN Chartplotter & XHD Radar

Navigation is simple and precise with Garmin touchscreen chartplotter, equipped with GPS, sonar, and xHD radar. Easily monitor fuel flow, engine data, bottom conditions, GPS location, tides and much more.

Full Galley

The C-288 C comes well equipped with a full galley for extended cruising. A propane stove top and convection microwave oven allows convenient cooking. The versatile galley is rounded out with a large galley sink, and refrigerator/freezer combo.

Multi-Use Seating

The aft bulkhead window opens, and dinette seat transforms to create a rear facing seat. Our convertible transom and gunwale seats comprise the social cockpit layout capable of hosting up to 5 adults.

Advanced Cutwater Hull

The C-288 C hull features an innovative combination of a steep, deep-V hull for a smooth ride, a keel pad for planing stability, and reversed chines for quick planing and reduced cornering roll. The double-stepped hull increases efficiency and performance and reduces fuel consumption while the laminar flow interrupters provide smooth, positive cornering performance.

Luxurious forward Stateroom

The forward stateroom is your resort destination, where, right outside your door, the scenery is always changing. You'll feel fully at home with a flatscreen TV, Bluetooth Fusion stereo, opening hatches, closet, cabinetry, and RGB LED accent lighting.

Trailerable 10FT Beam

The 10' beam of the C-288 C allows for a spacious, functional interior while maintaining the ability to trailer your boat to remote and inland destinations. Trailering also provides more options for storing your boat when not in use.

Performance

Twin 250HP Yamaha F250 outboards, electric steering (DES)
Double stepped hull
Electric trim tabs
Laminar flow interrupters
Bow thruster
Trailerable - 10' beam

Accommodations & Interior Comfort

Climate control (heat and air conditioning)
Cabin drink holders, 3
Curtains for privacy
Dinette (seats 4) converts to bed
Fully enclosed head
Fusion stereo system (multi-zone)
Hatches, pilothouse roof, solar reflective, 2
Hatches, stateroom, 2
Indirect cabin lighting
LED lighting
Electric marine toilet w/ holding tank, pump out
Midship stateroom
Opening portlights, 4
Private forward stateroom
Shower with enclosure
Storage under mattress
TV in stateroom

Deck Features

Anchor package; 22 lb, 50' chain, 200' line
Bow beaching ladder, stainless steel, concealed
Clear Path engine rigging
Clear Path swim step
Folding stainless steel mast for trailering
Forward line storage
Rod holders, 4
Sport racks, stainless steel
Swimming ladder, stainless steel
Swim step, with built-in fenders
Washdown system
Windlass, bow and helm controls

Cockpit

Cockpit cover, hard-top w/ lights
Cockpit drink holder
Cockpit seating, 5+
Downrigger Plugs and Pads
Electric grill
Livewell
Opening glass bulkhead with reversible seat
Reversible sunset seat
Transom entry door for boarding

Helm

Autopilot
Color engine display
Digital fuel flow data
Electronic shift and throttle control, twin lever
12" Garmin Chartplotter w/ GPS and Sonar
Garmin xHD radar
Helm drink holder
Helm seat, bolstered
USB charging ports
Windshield wipers, 2

Galley

Cutting board
Galley cabinets, 1
Galley drawers, 3
Microwave
Oven, convection/microwave
Refrigerator/freezer
Sink with hot and cold water, with pull-out rinse faucet
Stove top, propane
Wine/ water cooler

Mechanical & Electrical

AC Electrical panel
Battery charger
DC electrical panel
Galvanic isolator
Inverter
Lithium batteries (LiFePO4)
Macerator discharge
Smart Plug Inlet and 30amp
Shorepower Cord
Solar Panel, 220W Bi-Facial Solar Panel
Underwater lights

Safety

Carbon monoxide detectors
Courtesy lights
Electric horn
Illuminated compass
Navigation lights
Safety kit: fenders, lines, flares, fire ext, first aid kit, life jackets, boat hook
Swim platform rails
VHF radio, DSC capable
Window defrosters

Construction

Bonded electrical system
Foam-filled fiberglass stringer grid system
Seawater strainer(s)
Self bailing cockpit
Stainless steel cleats, rails, hardware
Vinylester barrier coat

Options

- Hull Color Upgrade | \$8,270
- Aft Cockpit sun shade with sunset shade | \$1,655
- Aluminum triple axle trailer with electric/hydraulic brakes, spare tire/bracket | \$20,400
- Dinghy lift (w/ 260 RIB inflatable) | \$11,000
- Factory Delivery Experience | \$3,310
- Garmin GXM Weather Antenna (GXM 54, XM) | \$1,655
- Garmin second helm screen | \$5,515
- Joystick Docking (main helm only) | \$13,000
- Rocket Launchers, Arch with rod holders (6) | \$1,160

Options, freight & taxes extra. Prices, specifications, equipment, and options may change without notice. Information on this sheet should not be used for navigation.

April 9, 2026

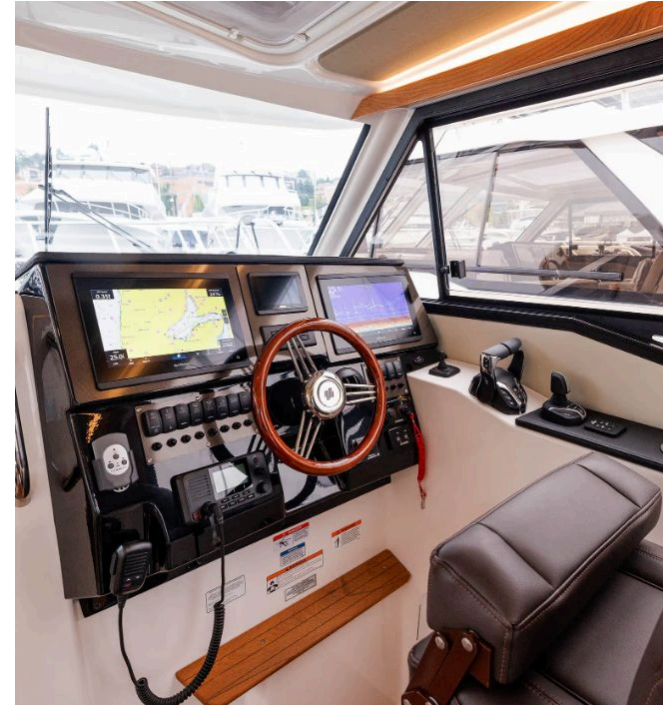
Model Page





Specifications

Engine Twin 250 HP Yamaha F250 outboards,
electric steering (DES)
LOA (motors down) 33' 7" | 10.24 m
LOA (motors up) 36' 3" | 11.05 m
Draft (motors down, approx) 33" | 0.84 m
Draft (motors up, approx) 23" | 0.58 m
Beam 10' | 3.05 m
Weight, dry 10,500 lbs | 4,763 kg (Estimated)
Fuel Capacity 200 US gal | 757.1 L
Water Capacity 41 US gal | 155.2 L
Waste Capacity 25 US gal | 94.6 L



True to the do-it-all nature of Cutwater Boats, the C-288 Command Bridge comes fully equipped with premium features designed for versatility. Its modern Downeast styling turns heads, while twin counter-rotating Yamaha F250 outboards deliver impressive power. Beneath the waterline, an advanced double-stepped deep-V hull with Laminar FlowInterrupters and a 10-foot beam ensures a balanced blend of performance, comfort, and efficiency. The wide beam also maximizes stability and cabin space, yet remains trailer-friendly.

Boarding is safe and simple thanks to the Clear-Path swim platform that wraps fully around the outboards. The cockpit is a multifunction hub, offering storage, rod holders, livewell, beverage holders, and an electric grill. Seating for six comes by way of a convertible sunset seat, fold-down gunwale seats, and an opening glass bulkhead lounge. Overhead, a solar panel extends off-grid time. Step into the salon and you'll find a true home on the water: a complete galley with stovetop, stainless sink, fridge/freezer, microwave convection oven, cabinetry, and wine/water cooler. At the helm, a Garmin chartplotter, sonar, radar, autopilot, color engine displays, and electronic twin-lever throttle deliver total confidence. A Climate-controlled interior, sliding windows, and opening portlights keep the cabin inviting year-round. Overnight accommodations for six include a forward stateroom, mid-berth, convertible dinette, and private head with shower. Up top, the CommandBridge adds a second helm with full Garmin suite, VHF, bow thruster, and seating for four. This elevated vantage point offers panoramic views and a lively social space—perfect for navigating, entertaining, or enjoying a sunset. The C-288 CommandBridge blends performance, comfort, and perspective—an ideal platform for adventure, connection, and unforgettable days on the water.



Model Features

GARMIN Chartplotter & XHD Radar

Navigation is fun and accurate with Garmin touchscreen chartplotter, equipped with GPS, sonar, and xHD radar. Easily monitor fuel flow, engine data, bottom conditions, GPS location, tides and much more.

Full Galley

The C-288 CB comes well equipped with a full galley for extended cruising. A propane stove top and convection microwave oven allows convenient cooking. The versatile galley is rounded out with a large galley sink, and refrigerator/freezer combo.

Command Bridge

Secure-step ladder access leads to a second helm with full Garmin electronics, VHF, and bow thruster controls. Comfortable seating for up to four guests provides the perfect spot to navigate, relax, or take in panoramic views.

Advanced Cutwater Hull

The C-288 CB hull features an innovative combination of a steep, deep-V hull for a smooth ride, a keel pad for planing stability, and reversed chines for quick planing and reduced cornering roll. The double-stepped hull increases efficiency and performance and reduces fuel consumption while the laminar flow interrupters provide smooth, positive cornering performance.

Luxurious Forward Stateroom

The forward stateroom is your resort destination, where, right outside your door, the scenery is always changing. You'll feel fully at home with a flatscreen TV, Bluetooth Fusion stereo, opening hatches, closet, cabinetry, and RGB LED accent lighting.

Trailerable 10FT Beam

The 10' beam of the C-288 CB allows for a spacious, functional interior while maintaining the ability to trailer your boat to remote and inland destinations. Trailering also provides more options for storing your boat when not in use.

Performance

Twin 250HP Yamaha F250 outboards, electric steering (DES)
Double stepped hull
Electric trim tabs
Laminar flow interrupters
Bow thruster
Trailerable - 10' beam

Accommodations & Interior Comfort

Climate control (heat and air conditioning)
Cabin drink holders, 3
Curtains for privacy
Dinette (seats 4) converts to bed
Fully enclosed head
Fusion stereo system (multi-zone)
Hatches, pilothouse roof, solar reflective, 2
Hatches, stateroom, 2
Indirect cabin lighting
LED lighting
Electric marine toilet w/ holding tank, pump out
Midship stateroom
Opening portlights, 4
Private forward stateroom
Shower with enclosure
Storage under mattress
TV in stateroom

Deck Features

Anchor package; 22 lb, 50' chain, 200' line
Bow beaching ladder, stainless steel, concealed
Clear Path engine rigging
Clear Path swim step
Folding stainless steel mast for trailering
Forward line storage
Rod holders, 4
Sport racks, stainless steel
Swimming ladder, stainless steel
Swim step, with built-in fenders
Washdown system
Windlass, bow and helm controls

Cockpit

Cockpit cover, hard-top w/ lights
Cockpit drink holder
Cockpit seating, 5+
Downrigger Plugs and Pads
Electric grill
Livewell
Opening glass bulkhead with reversible seat
Reversible sunset seat
Transom entry door for boarding

Helm

Autopilot
Color engine display
Digital fuel flow data
Electronic shift and throttle control, twin lever
12" Garmin Chartplotter w/ GPS and Sonar
Garmin xHD radar
Helm drink holder
Helm seat, bolstered
USB charging ports
Windshield wipers, 2

Galley

Cutting board
Galley cabinets, 1
Galley drawers, 3
Microwave
Oven, convection/microwave
Refrigerator/freezer
Sink with hot and cold water, with pull-out rinse faucet
Stove top
Wine/ water cooler

Command Bridge

Secure-step ladder
Drink holders
Full helm controls with Garmin, VHF, and bow thruster
Seating, 4-5

Mechanical & Electrical

AC Electrical panel
Battery charger
DC electrical panel
Galvanic isolator
Inverter
Lithium batteries (LiFePO4)
Macerator discharge
Smart Plug Inlet and 30amp
Shorepower Cord
Solar Panel, 220W Bi-Facial Solar Panel
Underwater lights

Safety

Carbon monoxide detectors
Courtesy lights
Electric horn
Illuminated compass
Navigation lights
Safety kit: fenders, lines, flares, fire ext, first aid kit, life jackets, boat hook
Swim platform rails
VHF radio, DSC capable
Window defrosters

Construction

Bonded electrical system
Foam-filled fiberglass stringer grid system
Seawater strainer(s)
Self bailing cockpit
Stainless steel cleats, rails, hardware
Vinylester barrier coat

Options

- Hull Color Upgrade | \$8,270
- Aft Cockpit sun shade with sunset shade | \$1,655
- Aluminum triple axle trailer with electric/hydraulic brakes, spare tire/bracket | \$20,400
- Cockpit Bimini Top w/ boot | \$4,380
- Dinghy lift (w/ 260 RIB inflatable) | \$11,000
- Factory Delivery Experience | \$3,310
- Garmin GXM Weather Antenna (GXM 54, XM) | \$1,655
- Garmin second helm screen | \$5,515
- Helm Master joystick, main helm and bridge | \$16,000
- Rocket Launchers, Arch with rod holders (6) | \$1,160

Options, freight & taxes extra. Prices, specifications, equipment, and options may change without notice. Information on this sheet should not be used for navigation.

April 16, 2026

[Model Page](#)






CUTWATER

C-32 C

Specifications

Engine Twin 300 HP Yamaha outboards w/
Helm Master EX joystick control, electric
steering (DES)

LOA (motors down) 37' 8" | 11.48 m

LOA (motors up) 39' 10" | 12.14 m

Draft (motors down) 33" | 0.84 m

Draft (motors up) 26" | 0.66 m

Beam 10' | 3.05 m

Height on factory trailer (mast down w/ radar,
est.) 13' 6" | 4.11 m

Length on factory trailer (motor up, est.) 43' 4" |
13.21 m

Fuel capacity 300 US gal | 1,135.6 L

Water capacity 60 US gal | 227.1 L

Waste capacity 40 US gal | 151.4 L

Weight, dry 11,400 lbs | 5,170 kg

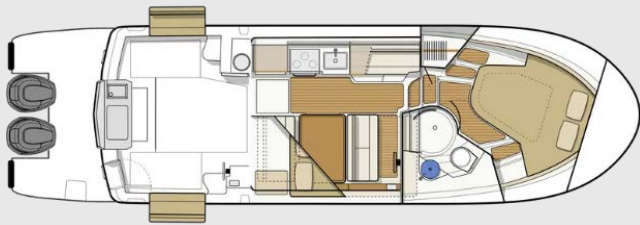


Do it all with this no-compromise cruiser. The Cutwater 32 Coupe (C-32 C) introduces an entirely new way of thinking about an outboard cruiser. Performance and comfort are central to the design. The advanced double-stepped, deep-V hull design combines speed, efficiency and superior stability. Our Laminar Flow Interrupters allow for smooth, positive cornering. Roll the throttles forward and you'll feel the powerful twin, counter-rotating 300HP Yamaha outboards, propel the C-32 C to remarkable speeds. Docking is easier than ever with Helm Master joystick steering.

Upon stepping into the comfortable interior, you'll feel fully at home. Appointed with fine wood accents throughout, a fully furnished galley, large dinette, private head and shower, and a luxurious forward stateroom featuring an island bed and recessed LED lighting, the C-32 C delivers a resort-like experience. The large midship stateroom and convertible dinette comfortably sleep up to four additional guests. You'll find extensive entertaining space on deck. The cockpit hosts expanding seating, rear-facing lounge, an electric BBQ grill, sink and an additional refrigerator. Moving to the foredeck you find hide-away lounge seating to relax and take in the sunset.

Equipped with the latest in marine electronics, the helm is where you're fully in control. Dual Garmin chartplotters with sonar, xHD radar, VHF, Yamaha engine display, electronic throttles, and joystick thruster controls, all work in unison to get you where you want to go, quickly and safely.

Perhaps the most exciting new feature of the C-32 C is the first of its kind, swim platform boasting thirty-two square feet of level, unobstructed, non-skid decking with no outboard well, rigging tubes or hoses to trip over. Heavy-duty stainless-steel handrails provide stability for boarding, fishing, watersports and safe dinghy access. To sum it all up, the C-32 C is a robust, do it all outboard cruiser that gives you the freedom to get out there and fish, cruise, explore and more!



Model Features

Advanced Cutwater Hull

The C-32 C hull features an innovative combination of a steep, deep-V hull for a smooth ride, a keel pad for planing stability, and reversed chines for quick planing and reduced cornering roll. The double-stepped hull increases efficiency and performance and reduces fuel consumption while the laminar flow interrupters provide smooth, positive cornering performance.

Full Galley

The C-32 C is well equipped with a full galley for extended cruising. Meal prep is a fun and easy with a refrigerator/freezer, large stainless sink with hot/cold water, a wine/water cooler and a stainless propane stove and oven combination or electric cooktop with convection microwave oven.

Multi-Use Seating

The aft bulkhead window opens, and the dinette seat transforms to create a rear facing seat into the cockpit. Fold-away cockpit seating provides a conversational layout while relaxing with friends or family in the cockpit.

Clear-path swim platform

Our Clear-Path Swim Platform is a revolution in safety and usability aft of the transom, boasting thirty-two square feet of unobstructed, usable deck space with no outboard wells or rigging. A folding boarding ladder is built-in for easy access when swimming and heavy-duty grab rails enhance safety when boarding from dock or tender.

Dual Garmin Chartplotters & XHD Radar

Navigation is fun and accurate with dual Garmin touchscreen chartplotters, equipped with GPS, sonar, and xHD radar. Easily monitor fuel flow, engine data, bottom conditions, GPS location, tides and much more.

Trailerable 10FT Beam

The 10' beam of the C-32 C allows for a spacious, functional interior while maintaining the ability to trailer your boat to remote and inland destinations. Trailering also provides more options for storing your boat when not in use.

Performance

Twin 300 HP Yamaha F300 outboards w/ Helm Master EX joystick control, electric steering (DES)
Double stepped hull
Electric trim tabs
Laminar flow interrupters
Bow thrusters
Trailerable - 10' beam

Accommodations & Interior Comfort

Climate control (heat and air conditioning)
Cabin drink holders, 4
Curtains for privacy
Dinette (seats 4) converts to bed
Fully enclosed head
Fusion stereo system (multi-zone)
Hatches, pilothouse roof, solar reflective, 4
Hatches, stateroom, 2
Indirect cabin lighting
Island bed
LED lighting
Electric marine toilet w/ holding tank, pump out
Memory foam mattress
Midship stateroom
Opening portlights, 7
Private forward stateroom
Storage under mattress
TV in salon
TV in stateroom

Deck Features

Anchor package, 22 lb, 50' chain, 200' line
Bow lounge seating, 3
Bow beaching ladder, stainless steel
Bow pulpit
Clear Path engine rigging
Clear Path swim step
Folding stainless steel mast for trailering
Forward line storage
Rocket launchers, 6
Rod holders, 2
Sport racks, stainless steel
Swimming ladder, stainless steel
Swim step, with built-in fenders
Washdown system
Windlass, bow and helm controls

Cockpit

Cockpit cover, hard-top w/ hatches and lights
Cockpit drink holders, 6
Cockpit refrigerator
Cockpit seating, 7+
Cockpit sink
Downrigger plugs and pads
Electric grill
Fold-out gunwale seating
Livewell
Opening glass bulkhead w/ reversible seat
Transom entry door for boarding

Helm

AIS receiving
Autopilot
Color engine display
Digital fuel flow data
Electronic shift and throttle control, twin-lever
12" Dual Garmin Chartplotters w/ GPS and Sonar
Garmin radar, xHD
Helm drink holders, 2
Helm seat, double
USB charging ports
Windshield wipers, 2

Galley

Galley cabinets, 3
Galley drawers, 2
Microwave/convection oven combo
Refrigerator/freezer
Sink with hot and cold water
Stove top, electric
Wine/water cooler

Mechanical & Electrical

AC electrical panel
Lithium (LiFePO4) house batteries
Battery charger
DC electrical panel
Galvanic isolator
Inverter
Macerator discharge
Smart Plug Inlet and 30amp
Shorepower Cord
Solar Panel, 220W Bi-Facial Solar Panel
Underwater lights

Safety

Carbon monoxide detectors
Courtesy lights
Electric horn
Illuminated compass
Navigation lights
Safety kit: fenders, lines, flares, fire ext, first aid kit, life jackets, boat hook
Swim platform rails
VHF radio, DSC capable
Window defrosters

Construction

Bonded electrical system
Foam-filled fiberglass stringer grid system
Seawater strainer(s)
Self bailing cockpit
Stainless steel cleats, rails, hardware
Vinylester barrier coat

Options

- Hull Color Upgrade | \$8,270
- Aft Cockpit sun shade with sunset shade | \$1,655
- Aft Helm Master joystick docking station (with thruster remote) | \$7,500
- Aluminum triple axle trailer with electric/hydraulic brakes, spare tire/bracket | \$20,400
- Cockpit Bimini Top w/ boot | \$3,790
- Cockpit freezer (in lieu of cockpit refrigerator) | \$660
- Dinghy lift (w/ 290 RIB inflatable) | \$11,500
- Factory Delivery Experience | \$3,310
- Garmin GXM Weather Antenna (GXM 54, XM) | \$1,655

Options, freight & taxes extra. Prices, specifications, equipment, and options may change without notice. Information on this sheet should not be used for navigation.

April 9, 2026

[Model Page](#)





Specifications

Engine Twin 300 HP Yamaha outboards w/
Helm Master EX joystick control, electric
steering (DES)
LOA (motors down) 37' 8" | 11.48 m
LOA (motors up) 39' 10" | 12.14 m
Draft (motors down) 33" | 0.84 m
Draft (motors up) 26" | 0.66 m
Beam 10' | 3.05 m
Bridge clearance (mast up) 18' | 5.49 m
Bridge clearance (mast down) 9' 9" | 2.97 m
Height on factory trailer (mast down w/ radar,
est.) 13' 6" | 4.11 m
Length on factory trailer (motor up, est.) 43' 4" |
13.21 m
Fuel capacity 300 US gal | 1,135.6 L
Water capacity 60 US gal | 227.1 L
Waste capacity 40 US gal | 151.4 L
Weight, dry 12,100 lbs | 5,488 kg



Performance, versatility, and comfort are central to the design of the Cutwater C-32 Command Bridge. The advanced double-stepped, deep-V hull combines speed, efficiency and superior stability. Our Laminar Flow Interrupters allow for smooth, positive cornering. Roll the throttles forward and you'll feel the powerful twin, counter-rotating 300 HP Yamaha outboards propel the C-32 CB to remarkable speeds. Docking is easier than ever with Helm Master joystick steering.

Upon stepping into the comfortable interior, you'll feel fully at home. With wood accents throughout, a fully furnished galley, large dinette, private head and shower, and a luxurious forward stateroom featuring an island bed with recessed LED lighting, the C-32 CB provides a resort-like experience. The large mid-ship stateroom and convertible dinette comfortably sleep up to four additional guests.

You'll find extensive entertaining space on deck. The cockpit hosts expanding seating, rear-facing lounge, an electric BBQ grill, sink and an additional refrigerator. Moving to the foredeck you'll love the hide-away lounge seating to relax and take in the sunset.

Equipped with the latest in marine electronics, the helm is where you're fully in control. Dual Garmin chartplotters with sonar, xHD radar, VHF, electronic throttles, and joystick thruster controls, all work in unison to get you where you want to go, quickly and safely. Step up to the Command Bridge for the same electronic enhanced navigation experience, plus a towering 360-degree view.

Perhaps the most exciting new feature of the C-32 CB is the first of its kind, Clear-Path swim platform boasting thirty-two square feet of level, unobstructed, nonskid decking without any outboard well, rigging tubes or hoses to trip over. Heavy-duty stainless-steel handrails provide stability for boarding, fishing, watersports, and safe dinghy access. To sum it all up, the C-32 CB is a robust, do it all outboard cruiser that gives you the freedom to get out there and cruise, fish, explore and more!



Model Features

Advanced Cutwater Hull

The C-32 CB hull features an innovative combination of a steep, deep-V hull for a smooth ride, a keel pad for planing stability, and reversed chines for quick planing and reduced cornering roll. The double-stepped hull increases efficiency and performance and reduces fuel consumption while the laminar flow interrupters provide smooth, positive cornering performance.

Full Galley

The C-32 CB is well equipped with a full galley for extended cruising. Meal prep is a fun and easy with a refrigerator/freezer, large stainless sink with hot/cold water, a wine/water cooler and a stainless propane stove and oven combination or electric cooktop with convection microwave oven.

Command Bridge

Safely accessed by staircase, the command bridge features seating for four as well as a dining table, providing you with an entirely new perspective when entertaining or navigating. The command bridge helm station features a Garmin chartplotter, bow/stern thruster controls, autopilot, VHF and Yamaha engine controls.

Clear-Path Swim Platform

Our Clear-Path Swim Platform is a revolution in safety and usability aft of the transom, boasting thirty-two square feet of unobstructed, usable deck space with no outboard wells or rigging. A folding boarding ladder is built-in for easy access when swimming and heavy-duty grab rails enhance safety when boarding from dock or tender.

Dual Garmin Chartplotters & XHD Radar

Navigation is fun and accurate with dual Garmin touchscreen chartplotters, equipped with GPS, sonar, and xHD radar. Easily monitor fuel flow, engine data, bottom conditions, GPS location, tides and much more.

Trailerable 10FT Beam

The 10' beam of the C-32 CB allows for a spacious, functional interior while maintaining the ability to trailer your boat to remote and inland destinations. Trailering also provides more options for storing your boat when not in use.

Performance

Twin 300 HP Yamaha F300 outboards w/ Helm Master EX joystick control, electric steering (DES)
Double stepped hull
Electric trim tabs
Laminar flow interrupters
Bow thrusters
Trailerable - 10' beam

Accommodations & Interior Comfort

Climate control (heat and air conditioning)
Cabin drink holders, 4
Curtains for privacy
Dinette (seats 4) converts to bed
Fully enclosed head
Fusion stereo system (multi-zone)
Hatches, pilothouse roof, solar reflective, 3
Hatches, stateroom, 2
Indirect cabin lighting
Island bed
LED lighting
Electric marine toilet w/ holding tank, pump out
Memory foam mattress
Midship stateroom
Opening portlights, 7
Private forward stateroom
Shower with enclosure
Storage under mattress
TV in salon
TV in stateroom

Deck Features

Anchor package, 22 lb, 50' chain, 200' line
Bow lounge seating, 3
Bow beaching ladder, stainless steel
Bow pulpit
Clear Path engine rigging
Clear Path swim step
Folding stainless steel mast for trailering
Forward line storage
Rocket launchers, 6
Rod holders, 2
Swimming ladder, stainless steel
Swim step, with built-in fenders
Washdown system
Windlass, bow and helm controls

Cockpit

Cockpit cover, hard-top w/ hatches and lights
Cockpit drink holders, 6
Cockpit refrigerator
Cockpit seating, 7+
Cockpit sink
Downrigger plugs and pads
Electric grill
Fold-out gunwale seating
Livewell
Opening glass bulkhead w/ reversible seat
Transom entry door for boarding

Helm

AIS receiving
Autopilot
Color engine display
Digital fuel flow data
Electronic shift and throttle control, twin-lever
Dual 12" Garmin Chartplotters w/ GPS and Sonar
Garmin radar, xHD
Helm drink holders, 2
Helm seat, double
USB charging ports
Windshield wipers, 2

Galley

Galley cabinets, 3
Galley drawers, 2
Microwave/convection oven combo
Refrigerator/freezer
Sink with hot and cold water
Stove top, electric
Wine/water cooler

Command Bridge

Access via staircase
Command bridge drink holders, 2
Full helm controls
12" Garmin navigation system
Removable command bridge table
Seating, 4

Mechanical & Electrical

AC electrical panel
Lithium (LiFePO4) house batteries
Battery charger
DC electrical panel
Galvanic isolator
Inverter
Macerator discharge
Smart Plug Inlet and 30amp
Shorepower Cord
Solar Panel, 220W Bi-Facial Solar Panel
Underwater lights

Safety

Carbon monoxide detectors
Courtesy lights
Electric horn
Illuminated compass
Navigation lights
Safety kit: fenders, lines, flares, fire ext, first aid kit, life jackets, boat hook
Swim platform rails
VHF radio, DSC capable
Window defrosters

Construction

Bonded electrical system
Foam-filled fiberglass stringer grid system
Self bailing cockpit
Stainless steel cleats, rails, hardware
Vinylester barrier coat
Seawater strainer(s)

Options

- Hull Color Upgrade | \$8,270
- Aft Cockpit sun shade with sunset shade | \$1,655
- Aft Helm Master joystick docking station | \$7,500
- Aluminum triple axle trailer with electric/hydraulic brakes, spare tire/bracket | \$20,400
- Cockpit Bimini Top w/ boot | \$4,380
- Command Bridge Bimini Top w/ boot | \$4,380
- Cockpit freezer (in lieu of cockpit refrigerator) | \$660
- Dinghy lift (w/ 290 RIB inflatable) | \$11,500
- Factory Delivery Experience | \$3,310
- Garmin GXM Weather Antenna (GXM 54, XM) | \$1,655

Options, freight & taxes extra. Prices, specifications, equipment, and options may change without notice. Information on this sheet should not be used for navigation.

April 16, 2026

Model Page

