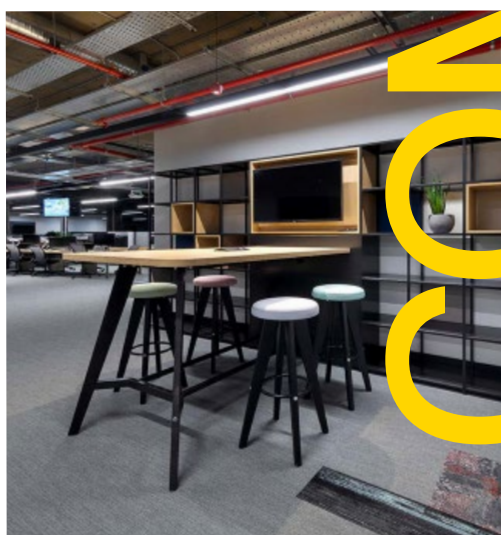




# Product Overview

# PC

Picnic  
Table



# WELCOME TO OUR WORLD

Staverton has a longstanding history in office furniture design. We are recognised for bringing form, function and flexibility together without compromise. By involving our clients at every stage of the work process, we find –together– the right solution for their specific needs.

British and proud, we have a manufacturing facility in South Yorkshire and a showroom in Clerkenwell, London. With the latest BAZ processing machinery recently installed, the factory has more than 38,000 sq ft of space for manufacture and assembly and ample room for our design team to turn client requirements into fully developed designs.

Staverton's skilled team of professionals is committed to delivering the highest quality requirements: our products are designed to achieve FIRA's gold standard, the world's leading independent furniture testing centre. Our bespoke approach, innovative design and collaborative method have earned us a name as a responsible and reliable award-winning British manufacturer.

We comply with all industry regulations, including the supply of responsibly sourced wood, on-site personnel safety and conduct, quality control, and adherence to management standards such as ISO 9001, ISO 14001, BSI Membership, Safe Contractor Certificate, FIRA Gold Certificate, FISP Membership and FSC Certificate.



012



The mark of responsible forestry





# POSITIVE CHANGE

We need to be the change we want to see. Leading by example while learning from others is the best way to drive change.

Business as usual is no longer enough. Nor is merely complying with regulations. We must do more than is expected of us. We need to improve each day. We need to understand our whole impact on the world. And we need to work together to ensure that we learn from each other and drive change.

There is an onus on us not just as manufacturers and designers of products but as individuals. Sustainability can be designed into systems and products, but the real change we need to see is in our attitudes and behaviours. We are all in this together and we all have a role to play.

[Join Us](#)

Respect for the environment is in Staverton's DNA. We care for our setting by creating sustainable, environmentally friendly products.





# Picnic Table

## Product Features



### Collaborative Breakout Tables

Designed for today's agile workplace, this table range is a perfect fit for breakout areas, third spaces and collaborative zones. Whether used for hot-desking, informal meetings or a break away from the desk, it delivers flexibility, choice and style. Available in standard or poseur height, the tables can be specified with static legs for a permanent solution or mobile frames with castors for easy movement. Poseur versions feature triangulated frames for added stability.

### Flexible Configurations

- Widths range from 1000–1800mm, with depths of 700, 800 or 1000mm
- Extend with intermediate legs to create longer runs of 2000–3600mm (or beyond – the length is limitless)
- Available in both table and poseur formats, all with a choice of static or mobile legs

### Flexible Configurations

Add an optional gantry for even more functionality. This can support integrated lighting, provide cable management, or incorporate planter troughs to bring biophilia into the workspace. Accessories such as trays and planter boxes allow you to tailor the setup to the needs of your space. With its clean design, versatile formats and practical accessories, this table range is as effective for focused work as it is for collaboration and social interaction.



Staverton is committed to a range of socially aware goals, from addressing individual well-being to ensuring minimal environmental impact. [Discover more about our efforts.](#)



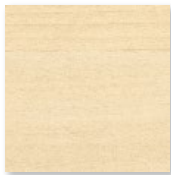
# PC Picnic Table

## Materials & Finishes

### Standard Worksurfaces/Matched Edging (25mm)



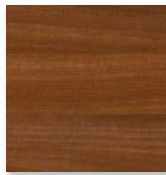
Traffic White  
W1000



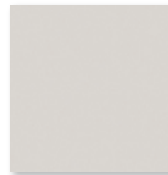
Sand Birch  
H1732



Oak  
D1929



Walnut  
H3704



Light Grey  
U708



Dust Grey  
U732



Anthracite  
U164

### Contrast Edging



Black  
U999

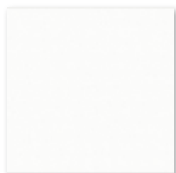


2D Ply  
'S'



3D Ply<sup>1</sup>  
'M'

### Frame



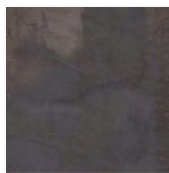
Satin White  
'K'



Satin Black  
'P'



Silver  
'V'



Raw Steel  
'S'

### Premium Finishes



Green Blue  
RAL5001



Reed Green  
RAL6013



Pale Green  
RAL6021



Honey Yellow  
RAL1005



Salmon Pink  
RAL3022



Stone Grey  
RAL7030

### Notes

Please note that due to the manufacturing process, some finish consistencies may occur. Every component is unique.

Please note that due to the organic nature of the Oak, some finish inconsistencies may occur.

<sup>1</sup> Premium Edge Finish - 3D Ply 'M'



## Showroom

Conveniently located in London, our newly refurbished Clerkenwell showroom exhibits Staverton's wide range of products. Come and visit us to see our offering for yourself.

[17-18 Hayward's Place](#)  
[London, EC1R 0EQ](#)

## Stay in Touch

To find out more or book an appointment, please contact us.

+44 (0)20 3794 1200  
[info@staverton.co.uk](mailto:info@staverton.co.uk)  
[staverton.co.uk](http://staverton.co.uk)



Staverton reserves the right to alter the prices and specifications without notice.

