

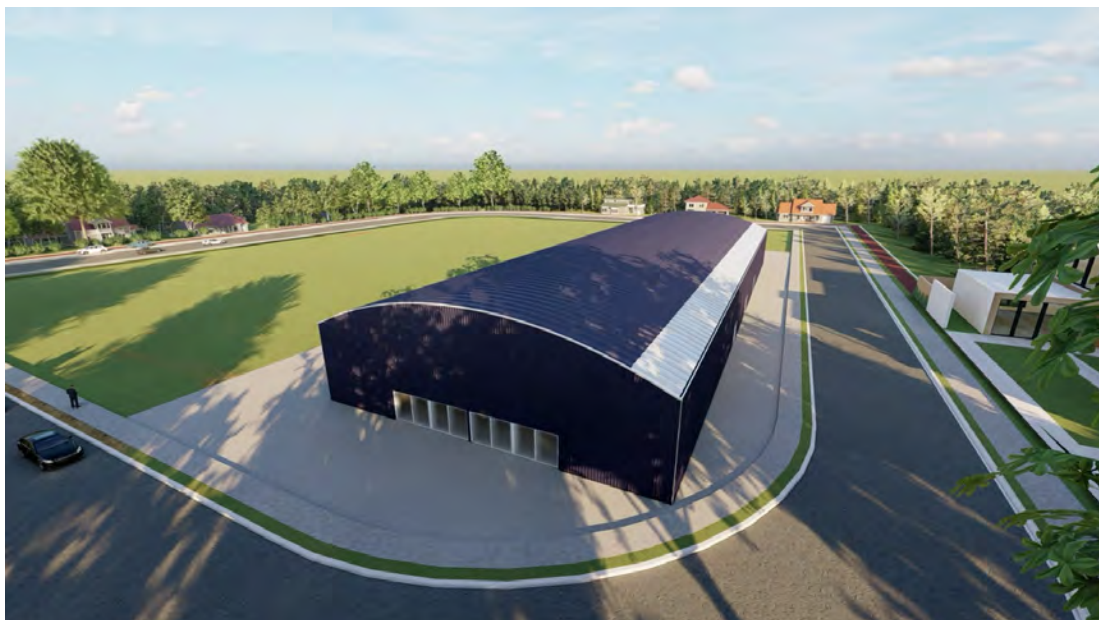
Embracing the need for solar panels and natural light

Incorporating solar panels into the roofs of new sports facilities, particularly once they reach a certain size, is mandatory within some UK planning authorities. Even when it is not a condition of planning consent, some operators choose to embrace solar because of their own environmental standards. The challenge is how to incorporate photovoltaic cells into the roof structure while still maximizing the natural light entering the building.

Padel Plus makes a virtue of using the highest quality of polycarbonate (PC) to maximize the natural light within our structures. We try to ensure our spaces look and feel as close as possible to playing outdoors, but with the benefit of taking wind, rain and snow out of the equation. However, there's no point in using PC if solar panels will cover the exterior surfaces. In these instances we incorporate a sandwich panel system for the roof and use PC on the facades. However there are times when you can't use PC on the facades either, eg if you are up against a taller existing building, or woodland. Our latest design combines sandwich panel for the majority of the roof with translucent strips around the perimeter.

This ensures a strong and cost-effective material to support the solar panels and still brings in valuable natural light. As ever our PC filters out all UV ensuring a safe and suncream-free, playing environment.

Whether this design is imposed by the limitations of your site or introduced as part of a value engineering process to trim costs, we believe it's an excellent and innovative response to the needs of the UK market.



Above & Below Left |

With so much of padel played above shoulder level, it is very important that a player has a single unified backdrop when tracking a ball above head height. This concept of using light strips around the perimeter where roof meets wall works well and introduces significant amounts of daylight in structures that can't make use of large expanses of PC.

On the long list of disadvantages of PVC covered structures, is the fact that the fabrics are typically not translucent, making the padel hall dingy and reliant on artificial lighting all day. Natural light is so important for general wellbeing, we feel it must be prioritized in sports facilities. It is why Padel Plus is a strong advocate of using polycarbonate which provides a wonderful diffused light, is an efficient insulator of heat and sound, and limits light pollution at night.

Meeting the needs of players & operators

One of the key things that distinguishes Padel Plus amongst canopy providers is our understanding of racket sports, particularly padel, and the needs of players. With so much of the game played above shoulder height, it is vital to consider the backdrop as players track fast moving balls. You want a consistent use of materials wherever possible. If a player's eyes are constantly strained by changing colours, textures and light levels, they'll tire more quickly, mis-hit the ball more regularly and have less fun. Padel Plus considers these details and designs solutions for players, the operator and the environment. It's a large number of small details that together ensure our venues are a pleasure to play in.



Having bought into the concept of polycarbonate we were concerned when it became clear solar panels on the roof would be a planning condition. This hybrid approach ensures the design can be built and will still be light, bright and exciting.”

Leading UK Padel Operator, commissioning two PC structures from Padel Plus

Key Points

- + Padel Plus's canopy partner Cubinor (and its group company Esguin which manufactures and installs) is a specialist provider of sports structures and has designed and built facilities across the EU to appropriate Eurocodes
- + Padel Plus exclusively brings Cubinor's polycarbonate canopy expertise to the UK market
- + Paired with Jubo's pre-eminent padel courts, we build legacy sports facilities for operators who understand quality and real value
- + Solar panels are increasingly important within new built sports facilities, often a mandatory requirement
- + Balancing a strong structure to support solar panels, with materials that allow light into the building, while respecting the needs of players, is the challenge
- + Cubinor's team has the solar expertise to advise on the design of the energy production and storage aspects of a project
- + Padel Plus integrates all these services, including groundworks, into a comprehensive padel solution which customers can access via a single project manager



Padel Plus Cubinor Esguin structures designed by padel players for padel players, using the best engineering and specialist manufacturing & installation

In This INSIGHT

UK Canopy Solutions
Polycarbonate
Solar Energy & Storage
Cubinor Esguin

James Sandwith

James@PadelPlus.uk
+44 7947 044496

Lee Witham

Lee@PadelPlus.uk
+34 690 910 165

Adrian Blakemore

Adrian@PadelPlus.uk
+34 674 168 734

Find us online [PadelPlus.uk](https://www.padelplus.uk)