

Padel Plus Pavilions: Certainty of Play and Certainty of Revenue

Our canopies are critical to maximizing the enjoyment of padel given the British climate. The protection they provide ensures certainty of play, at any time of day or night, and consistent playing conditions.

British land values are typically higher than in most countries and if investment in sports facilities is going to be made, the owner/operator needs to ensure the courts are being used for extended periods throughout the day and evening, and certainly all year to provide a return on investment. Padel Plus's canopies, with best-in-class lighting, mean our courts can be enjoyed from early morning until late at night all 12 months of the year.

Fully customisable

- + Steel structure provides enduring strength & weather resistance
- + Scalable to accommodate large court numbers
- + Polycarbonate cladding diffuses natural light ensuring bright & airy playing conditions
- + Polycarbonate also reduces reliance on day-time artificial lighting
- + Lighter, stronger, easier to install & cheaper than glass
- + Full UV protection
- + Excellent sound insulation properties reducing noise to neighbours
- + Variety of options for the bottom 3m to ground level including motorized awnings, full polycarbonate sidings or sliding glass doors
- + Interior-design partner who can create beautiful and comfortable spaces within the canopy to encourage social use
- + Partnerships with contractors to provide complete fit-out service for bar/café, changing rooms, reception area, pro shop
- + Fully guaranteed against defects in material & workmanship for 25 years (subject to proper maintenance) with a design life in excess of 40 years





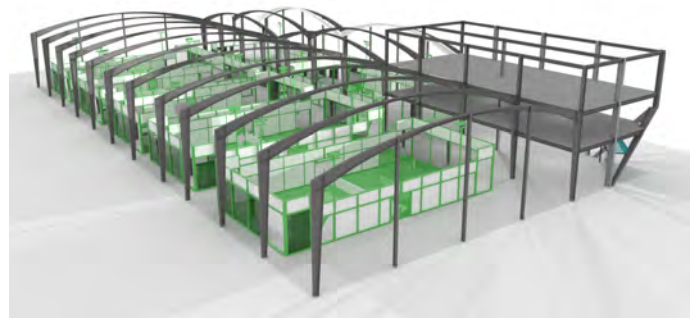
Left | Our ability to span large spaces means our canopies can be used for a range of sports including this mixed-sport pavilion that covers two pickleball, two padel and two squash courts.

Below | We're designing a canopy to cover a 60 x 40m pitch for a football club with additional space for training and spectators around the perimeter. The footprint will cover 4256m² with no internal supports.



You get an amazing sense of playing outdoors because of the use of polycarbonate which filters daylight, but it also removes all UV, absorbs a lot of sound, limits light pollution and of course takes rain, wind and snow out of the equation.”

Adrian Blakemore, Padel Plus



Why polycarbonate?

Strong, flexible, attractive, cost-effective

- + Polycarbonate is a thermoplastic polymer that is 200 times stronger than glass
- + Wonderful diffused light making the most of natural sunlight but removing glare
- + Reduces the need for artificial light compared to PVC-covered canopies which tend to be darker, damper spaces that require artificial light all day
- + Blocks UV radiation from the sun
- + Compliant with the toughest fire codes: it will neither release toxic gases nor spread flames
- + Superior thermal insulation increases energy efficiency
- + Snap-lock connection system of panels ensures air-tight and water-tight interior where needed



Left & Above |

Polycarbonate's strength and durability, including superior wind and snow resistance, make it a very popular building material. Combined with excellent environmental credentials it is increasingly being used around the world for commercial, retail and sports facilities.

Positioning our product?

Strong, flexible, attractive, cost-effective

We deliberately position our product as an enduring and high quality solution, aimed at clubs or operators with vision beyond short-term commercial gain. These are facilities that create a first class legacy. There are other providers of steel and polycarbonate canopies in the UK offering 'premium products' but it is important to understand the differences which might lead to a price discrepancy. Padel Plus Pavilions:

- + Are designed to meet EN 1993 Eurocode 3 – this is concerned with requirements for resistance, serviceability, durability and fire resistance of steel structures. Our pavilions are permanent structures designed for life.
- + Use hot dip galvanized steel to prevent corrosion over lifespan.
- + Use the best quality of polycarbonate on the market. We specify 30mm Danpalon® which is more costly than other polycarbonate sheets. But it provides exceptional quality of light, a rich non-industrial visual appeal and delivers thermal insulation and UV protection. By filtering the amount of light depending on the different daytime hours, Danpalon® contributes to optimal efficiency and significant savings in energy costs.

- + Manufactured and installed by Cubinor, a specialist in sports canopies who has completed projects across Europe including prestigious structures for Ciudad de la Raqueta in Madrid with 11,000m² of canopy covered courts. Padel Plus is their exclusive UK partner.
- + Designed to provide optimum playing conditions: the closest experience to playing outdoors but with the benefit of certainty of play whatever the weather conditions.
- + It is sustainable design for long-term and economic operation.
- + Padel Plus is the only supplier to the UK market using multi-cellular PC with a thermal transmittance value that complies with the typical values of 1.2–1.5 W/m²K required for indoor and enclosed facilities in UK.



Padel Plus Cubinor Esquin structures designed by padel players for padel players, using the best engineering and specialist manufacturing & installation

In This INSIGHT

UK Canopy Solutions
Danpal Polycarbonate
Legacy Sports Facilities
Cubinor Esquin

James Sandwith

James@PadelPlus.uk
+44 7947 044496

Lee Witham

Lee@PadelPlus.uk
+34 690 910 165

Adrian Blakemore

Adrian@PadelPlus.uk
+34 674 168 734

Find us online [PadelPlus.uk](https://www.padelplus.uk)