

# KOMFORTEX® Installation Instruction

## Valid for Protection, Variant

### 1. General information

KOMFORTEX® Protection is a robust, easy-care and moisture-proof elastic covering that is ideal for wall covering in horse boxes.

High load capacity and excellent resistance against mechanical wear make KOMFORTEX® Protection to an "Allrounder" in the range of horse boxes and reduces the risk of injuries to the horses.

In case of the broad range of eye-pleasing colours, individual colour options are possible.

KOMFORTEX® Protection also reduces the impact noise and enhances the ambience.

### 2. Tools

Measuring and marking: folding rule, chalk line, chalk



Cutting: solid cutter, sabre saw (saw blade for wood), Winkelschiene



Drilling, mounting, gluing: drilling machine, cordless screwdriver, hammer, scraper



*This data sheet is not subject to change. All information without guarantee.  
The currently valid version can be found at [www.kraiburg-relastec.com/komfortex](http://www.kraiburg-relastec.com/komfortex)*

page 1 of 4

### Mounting elements:

Countersunk-head screws M5 x 30 mm for installing on wooden walls

Countersunk-head screws M6 x 50 mm and dowels for installing on concrete walls

### 3. Substrate walls

Make sure that the substrate is leveled, free of dust and free of foreign material (e.g. residual mortar, oil etc.). All types of flooring plasters and also poured asphalt surfaces are suitable substrates.

Minor unevenness can be corrected with a flow able cement-repair compound. Before applying this compound, clean the substrate surface and apply a primer (bonding agent) if necessary to ensure firm bonding. If the substrate is highly absorbent, coat with a suitable sealant primer.

### 4. Preparation

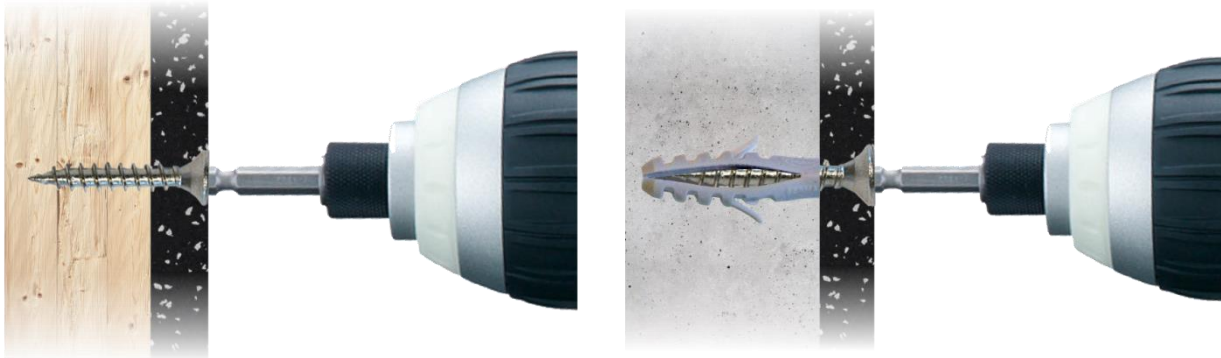
The walls in horse boxes have to be brushed solid. It must be clean and free of any other pollution before starting to install.

A smooth/uniform leveled surface for wall to be provided. The elastic layer material is delivered as rolls or sections and should be stored at temperature range of 18°C to 30°C for 24 hours before installation to ensure correct temperature. The ambient temperature for installation should be between 15 °C and 28 °C with relating humidity ranging between 40% to 60%. At lower ambient temperatures the glue, filling and coating compounds are difficult to process.

### 5. Installation

After cleaning the surface, and when necessary leveled the substrate, starting with the installation. Apply the glue with a toothed spatula constant on the wall.





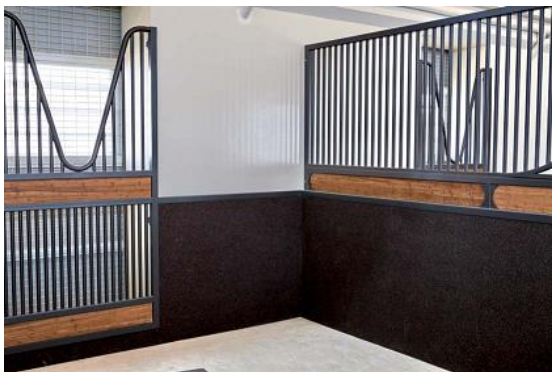
After allowing the setting time recommended in the glue manufacturer's instructions, install the KOMFORTEX® Protection even at the walls.

It is recommended screwing the material additional to get more position stability.

In case of what kind of wall material exists wood or concrete use the crews and fixed the layer material in the distance of 25cm.

Before installing the next section, make sure that the section installed is properly aligned. Subsequent correction is very difficult.

When installing the sections is extremely careful to position the adjoining edges flush against one another, i.e. such that there are no gaps between the neighboring sections. Most stable boxes have an already existing metal profile system:



So that is easy to fix the KOMFORTEX® Protection with that profile system after gluing. Shortly after installation, i.e. when the glue has begun to set but is not yet completely hardened; apply contact pressure to the layer material surface by a roller to ensure full contact to the substrate.

For installation of KOMFORTEX® Protection we recommend to use the SPORTEC 700 2- component polyurethane glue or an adhesive made by following producer or comparable, to order directly:

Company	Homepage	Glue
Henkel (Thomsit)	<a href="http://www.thomsit.com/">http://www.thomsit.com/</a>	R 710, K182, P625
Mapei	<a href="http://www.mapei.com">http://www.mapei.com</a>	Adesilex G 19