

KOMFORTEX® Installation Instruction edge and corner profile

1. Storage of KOMFORTEX® products and adhesives

KOMFORTEX® products should generally be stored in dry, evenly tempered rooms at temperatures above 10°C. If, in individual cases, the products have been stored at temperatures below 10°C, they must be allowed to acclimatise for at least two hours before installation at an ambient temperature above 10°C at the installation site.

Important note:

Adhesives must always be stored in a dry and frost-free place.

To avoid different discolourations caused by sunlight, please always cover the goods completely with the UV film (as delivered from the factory) until installation.

2. required tools

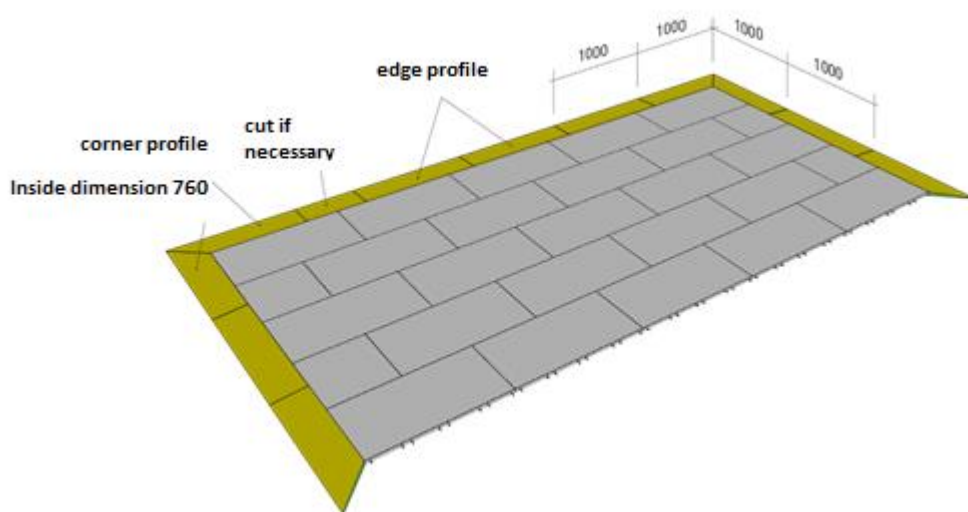
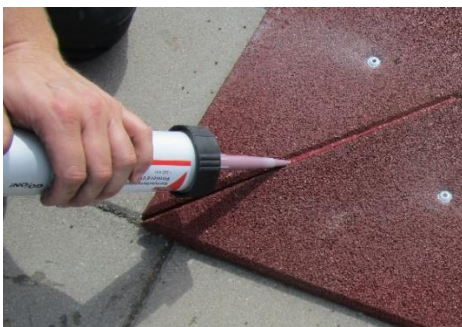
- steel rule (carpenter's square 60 cm)
- Cutting blade with replacement blades (heavy duty)
- Tape measure
- Felt-tip pen (water-soluble), chalk or similar
- Chalk line with chalk powder
- Cartridge press for processing the adhesive cartridges
- Handsaw, electric jigsaw or band saw (wood saw blade)
- Knee pads
- masking tape or duct tape
- gloves

3. Subfloor

Before laying the KOMFORTEX® edge and edge corner profiles, the surface must be checked for load-bearing capacity, loose parts must be removed and any defects must be repaired if necessary (e.g. with special mortar). The substrate must be clean and dry. Before installing the KOMFORTEX® edge and edge corner profiles, the absorbency and adhesion (e.g. with OTTO Primer) must be regulated if necessary.

4. Installation

The KOMFORTEX® edge and edge-corner profiles are glued to the existing substructure with 1-component PUR adhesive in a form-fitting and force-fitting manner. Glue the joints of the KOMFORTEX® edge and edge-corner profiles to one another. Length cuts can be easily made with a slow-running jigsaw (wood saw blade with medium-sized toothings) or with a floor cutter along the steel edge. The edge and edge corner profiles must be glued to the substrate. Additional dowelling is recommended.



Recommended for this are e.g. Concrete screws W-BS / S type P TX 30 6x corresponding length adapted to the profile thickness.

The length screwed into the substrate should be at least 3cm.

For this purpose, 2 holes per profile are made in the center of the profile using a masonry drill underground.



The screw head should be countersunk as deep as possible in the profile.



These are then additionally sealed using PU adhesive.



To avoid colour variations due to differences in sunlight exposure, leave the UV protection film on the product as supplied until just prior to installation.

*This data sheet is not subject to change. All information without guarantee.
The currently valid version can be found at www.kraiburg-relastec.com/komfortex*

page 3 of 4

3. Gluing instruction

Required quantity of glue: 1 cartridge (310 ml) for every 3 – 4 m of joint length glued.

Type of glue: elastic 1-component polyurethane adhesive cement Ottocoll P 83 grey and Ottocoll M 500 red available through us.

Preparation: The surfaces must be clean, dry and free of grease. Check adhesion to and compatibility with plastic and painted surfaces before installation.

Gluing: Apply adhesive cement from application pistol onto the substrate. The required layer thickness is dependent on the materials being joined. Within 10 minutes, put the upper material in place and apply contact pressure. Due to the pasty consistency of the cement, we recommend maintaining contact pressure until curing is complete. The required curing time is dependent on the layer thickness and the humidity of the ambient air.

Processing temperature: + 5°C until +40°C

Film after 20 min at 23°C

Curing time after 24 h at 23°C