

## 1. Application Sector

**DAMTEC® multi** is a floor underlay for impact sound reduction.

## 2. Substrate

Under screed: Sweep the existing dry concrete surface clean with a broom before installation. In case of larger unevenness or installed piping is if necessary a levelling screed or a levelling filler to be installed. If necessary install thermal insulation. Installation instructions of the manufacturers by levelling layers and thermal insulation are to be considered.

Under Flooring: Check and prepare the substrate in accordance with accepted construction practice. All substrates must conform to the national sub base regulations. They must be level, clean, firm, stable bearing, free of cracks, free of substances which reduce adhesion (e.g. oil, dust, abrasion debris, old paint etc.) and dry.

If necessary use levelling compounds or primers. Check the usage instructions of the adhesive manufacturer(s) for possible special procedures to follow over levelling compounds or primers if used.

## 3. Storage / Preparation

The insulating underlay should be stored in dry areas at constant temperature.

Under screed: Before installation of floor system components, install a peripheral insulation strip over all structural components which extend upward or laterally such as walls, pipes etc. This is required to avoid formation of sound conduction channels within the structure. The peripheral strip must be thick enough to ensure proper insulation and must extend upward beyond the subsequent floor surface. Place the underlay over the entire surface to be covered. Trim to size slightly larger than the surface covered.

Under Flooring: Place the underlay over the entire surface to be covered, laying it perpendicular to the subsequent laying direction of the floor finish. Trim to size slightly larger than the surface covered. Leave the underlay in place for one day (min. 24 hours) to allow dimensional relaxation and temperature equilibration.

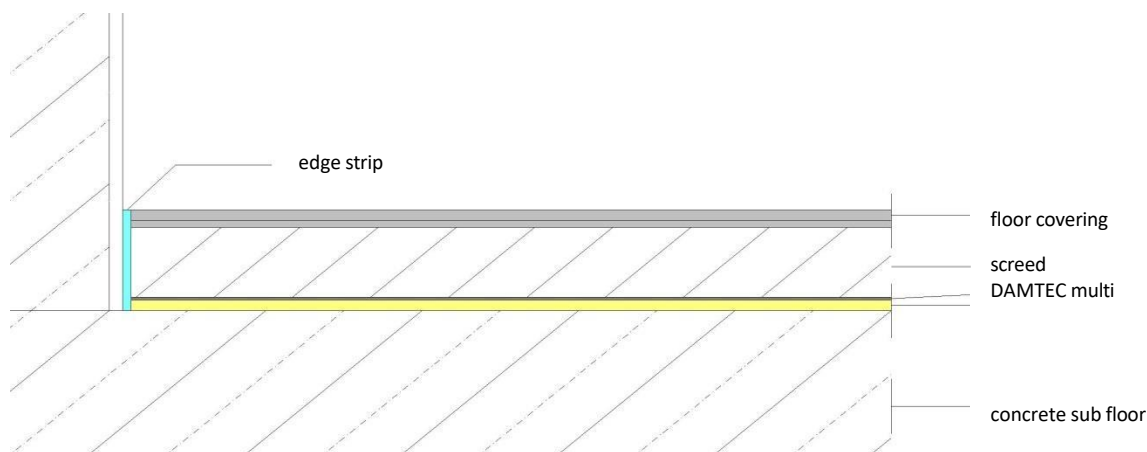
#### 4. Installation

Under screed: Trim the underlay to the exact dimensions of the surface covered. Position each underlay section flush to the adjacent underlay section without overlap.

Seal joints with adhesive tape to avoid screed penetration and resultant sound conduction channels. Cover underlay with PE membrane which should also cover the peripheral insulation strip and extend above the subsequent floor surface.

To avoid formation of sound conduction channels, be certain that screed cannot enter into the insulating underlay.

Install the screed layer in accordance with applicable standards and regulations.



Under Flooring without fixing to the substrate: Trim the underlay to required size but do not fix in place. When installing underlay, leave sufficient clearance to walls and adjacent structural components as required by the floor finish used.

The installation of floor finish has to be done in accordance with floor finish manufacturers' recommendations.

Under Flooring with gluing to the substrate: Trim the underlay to required size. Then fold back to the middle of the room and glue the underlay to the substrate, observing the instructions of the adhesive and floor finish manufacturers. For this put in the underlay without fold and rub and roll carefully. For ceramic tiles put in without fold into the fresh mortar and use the smooth side of a notched trowel or a smoothing trowel and press in slightly and wipe off in such a way that no cavities under the mat remain. We recommend smoothing from the mat centre outwards.

The second half of the room has to be done with same procedure.

When gluing the underlay, leave sufficient clearance to walls and adjacent structural components as required by the floor finish used. For an optimal decoupling and impact sound insulation always put on and push the mats closely. When installing tiles immediately scrape out mortar cleanly from the joints of the mats and push the mats together again. For avoiding of mortar bridges the joints of the mats can be covered with a suitable duct tape.

The installation of floor finish has to be done in accordance with adhesive and floor finish manufacturers' recommendations.

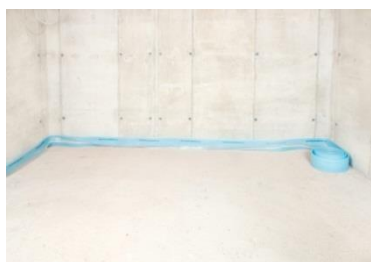
## 5. Important Hints

Castor chair behavior and residual indentation after static loading of the flooring can change in accordance with the insulating underlay used. Only use underlay approved by the floor manufacturer. Prior to any installation work, carefully read and observe the usage instructions and processing guidelines of the adhesive cement and floor finish manufacturers. In case of doubt, please contact the manufacturer's applications engineering department for advice.

### DISCLAIMER:

The information provided is intended only as a summary and general overview on matters of interest. The information is not intended to be comprehensive nor does it constitute expert advice. KRAIBURG RELASTEC shall not be liable for incidental and/or consequential damages directly or indirectly sustained, nor any loss caused by not complying with relevant industry/product standards and improper use of any Damtec® products. Due to varying construction methods, any other circumstances not stated above should be brought to the attention of KRAIBURG RELASTEC for review. For suitability to the prevailing site conditions, it is advised that certified testing should be conducted. It is recommended to seek further advice on your application with our technical staff prior to use.

## 6. Installation under screed / concrete slab (as an example)



1. Before installation of floor system components, install a peripheral insulation strip over all structural components which extend upward or laterally such as walls, pipes etc.

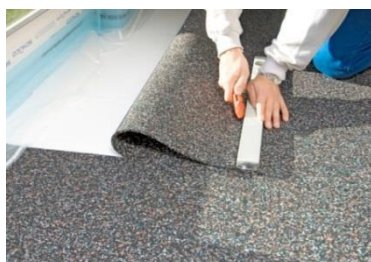
This is required to avoid formation of sound conduction channels within the structure. The peripheral strip must be thick enough to ensure proper insulation and must extend upward beyond the subsequent floor surface.



2. Place the underlay over the entire surface to be covered. Trim to size slightly larger than the surface covered. Leave the underlay in place for one day to allow dimensional relaxation and temperature equilibration.



Also possible but not recommended using the mat as the peripheral insulation strip. This is under responsibility of the installer and it has to be ensured that the minimum thickness, especially at the edge, is not less than necessary. This is only possible for mats less than 8mm. To have a rectangular angle in the corner of the edges, it is useful to cut the mat.



3. Use a regular carpet knife in conjunction with a steel straightedge for cutting to size.



4. Install the screed or light weight cement.



5. After finished installation start with floor finish.  
You can use other **DAMTEC® multi** products again for sound insulation.

The installation instruction is not subject to any change service! All information is without guarantee.  
With the publication of this product data sheet all former issues cease to be valid.

Page 5 of 9



## 7. Installation with glued parquetry floor



1. The substrate must be levelled and clean. If necessary use levelling compounds or primers. Check the usage instructions of the adhesive manufacturer for possible special procedures to follow over levelling compounds or primers if used.



2. Place the underlay over the entire surface to be covered, laying it perpendicular to the subsequent laying direction of the floor finish. Leave the underlay in place for one day to allow dimensional relaxation and temperature equilibration.



3. Trim **DAMTEC® multi** to size slightly larger than the surface covered



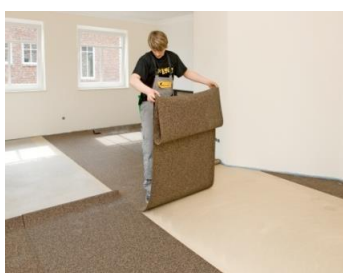
4. Fold back **DAMTEC® multi** to the middle of the room and glue the underlay to the substrate, observing the instructions of the adhesive and floor finish manufacturers.

The installation instruction is not subject to any change service! All information is without guarantee.  
With the publication of this product data sheet all former issues cease to be valid.

Page 6 of 9



5. For this put in **DAMTEC® multi** without fold and rub and roll carefully.



6. The second half of the room has to be done with same procedure.



7. The installation of floor finish has to be done in accordance with adhesive and floor finish manufacturers' recommendations.



8. In case of doubt make a trial or ask manufacturer for technical advice.

## 8. Installation with ceramic tiles



1. Remove old and loose tiles if necessary. The substrate must be levelled and clean.



2. If necessary use levelling compounds or primers.



3. Place **DAMTEC® multi** over the entire surface to be covered. Trim to size slightly larger than the surface covered. Leave the underlay in place for one day to allow dimensional relaxation and temperature equilibration.



4. Trim **DAMTEC® multi** to the exact dimensions of the surface covered.

The installation instruction is not subject to any change service! All information is without guarantee.  
With the publication of this product data sheet all former issues cease to be valid.

Page 8 of 9





5. Fold back **DAMTEC® multi** to the middle of the room and glue the underlay to the substrate, observing the instructions of the adhesive and floor finish manufacturers



6. Put in **DAMTEC® multi** without fold and rub and press carefully. For the second half work in same way.



7. The installation of ceramic tiles has to be done in accordance with adhesive and floor finish manufacturers' recommendations.



8. In case of doubt make a trial or ask manufacturer for technical advice.

The installation instruction is not subject to any change service! All information is without guarantee.  
With the publication of this product data sheet all former issues cease to be valid.

Page 9 of 9