

Installation recommendation

This instruction is valid for the following **SPORTEC®** products: **UNI classic sandwich** and **UNI versa sandwich**.

1. Substrate

The substrate must be tested and evaluated before installation in accordance with the national standard (DIN 18365).

Suitable substrates are, for example, asphalt, concrete or screed. The substrate ready for covering must be pressure and tension resistant, even, permanently dry, load-bearing, clean and free of dirt and cracks that could impair the bonding.

The substrate must comply with the limit values for evenness deviations in accordance with DIN 18202 (increased requirements = max. 3 mm difference over a distance of 1 meter). Slight unevenness must be repaired with a suitable leveling compound.

Depending on the substrate, it may be advisable to prime the substrate with a suitable (barrier-) primer.



Even, suitable substrate made of poured screed



not suitable substrate

2. Preparation work

The **SPORTEC® standard 2.0** elastic layer material is delivered in rolls and must be stored on site for 1-2 days at a temperature between 15 °C and 25 °C before installation. On the day prior to installation roll out the material fully, but do not bond down, so that the rolls can relax. Before installation mix both components of adhesive and pour all of the glue out evenly over the prepared installation area so that none is left in the pot. Follow adhesive manufacturer's instructions if not using SPORTEC 700 2K-PU adhesive.

The installation recommendation is not subject to any change service! All information is without guarantee.

Latest version of this document available on www.kraiburg-relastec.com/sportec

page 1 of 7

Double the amount of adhesive required in your calculation, since both layers must be bonded, i.e. the **SPORTEC® standard 2.0** onto the substrate and the **SPORTEC® UNI classic/versa** onto the elastic layer.

When using **SPORTEC 700 2K-PU adhesive**, the following calculations can be made:

- Installation on asphalt (open pored): approx. 1.7 kg/m²
(approx. 1.0 kg/m² for the elastic layer + approx. 0.7 kg/m² for the top layer)
- Installation on screed/concrete (closed): approx. 1.4 kg/m²
(approx. 0.7 kg/m² for the elastic layer + approx. 0.7 kg/m² for the top layer)



Mixing of the 2-component PU adhesive

3. Installation of elastic layer

Apply the glue evenly with a notched trowel over the area where **SPORTEC® standard 2.0** will be rolled out. Use a notched trowel with a notch depth as recommended by the adhesive manufacturer to achieve the correct spread rate. After the glue is spread out correctly, roll the material out into the adhesive bed (please take note of different adhesives curing time).



Adhesive application to clean substrate; roll out into the adhesive bed

Ensure that the roll is installed the correct way up (the underside of the roll has a label/sticker) and roll out straight. Roll out the material in same direction every time and position the adjoining edges flush against one another so that there are no gaps between adjacent rolls. As shown in the picture below where possible use material from the same production batch, and install rolls in ascending number order.

The installation recommendation is not subject to any change service! All information is without guarantee.
Latest version of this document available on www.kraiburg-relastec.com/sportec

To find the production batch reference and the roll numbers, refer to the labels on the underside of each roll.



Production batch no.

5800205	No 96742
Stärke (mm)	6
Breite (mm)	1500
Länge (mm)	20000

Production reference batch no.

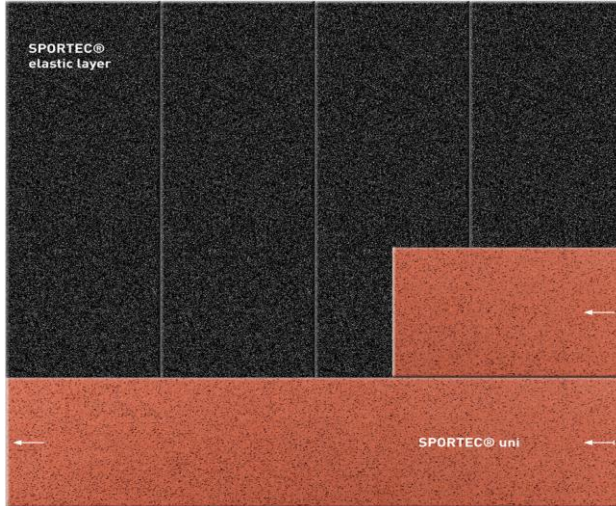
After the adhesive has grabbed but before adhesive is fully cured, contact pressure should be applied to the surface with a roller to eliminate air bubbles underneath the material.



Scrolling of the floor with a pressure roller

4. Installation of top layer

After adhesive of the elastic layer is completely cured, start installation of the top layer **SPORTEC® UNI classic/versa**. In generally roll the top layer material out in crossed-over direction to the installed elastic layer.



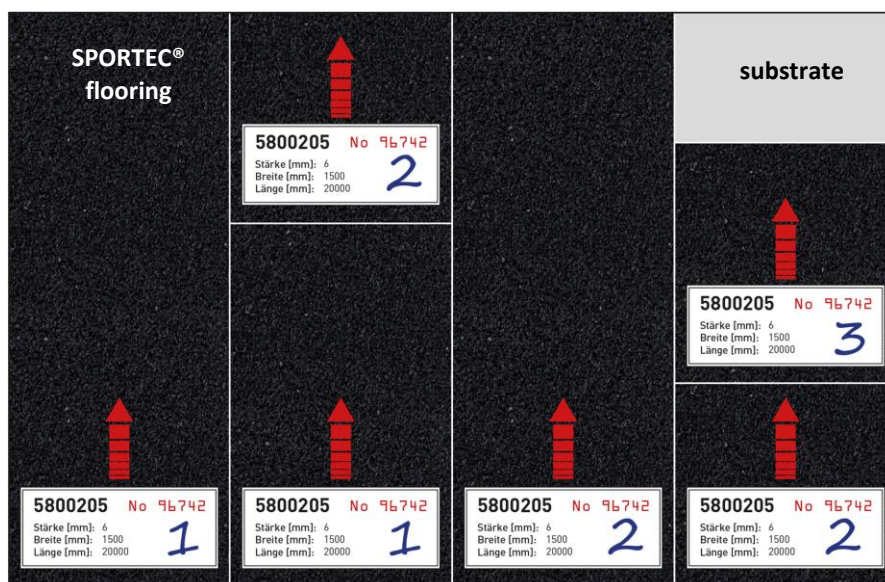
Applying of the top layer crosswise to the elastic layer

Apply the glue evenly with a notched trowel over the area where **SPORTEC® UNI classic/versa** will be rolled out. Use a notched trowel with a notch depth as recommended by the adhesive manufacturer to achieve the correct spread rate. After the glue is spread out correctly, roll the material out into the adhesive bed (please take note of different adhesives curing time).



Rolling out the top layer over the elastic layer

Ensure that the roll is installed the correct way up (the underside of the roll has a label/sticker) and roll out straight. Roll out the material in same direction every time and position the adjoining edges flush against one another so that there are no gaps between adjacent rolls.

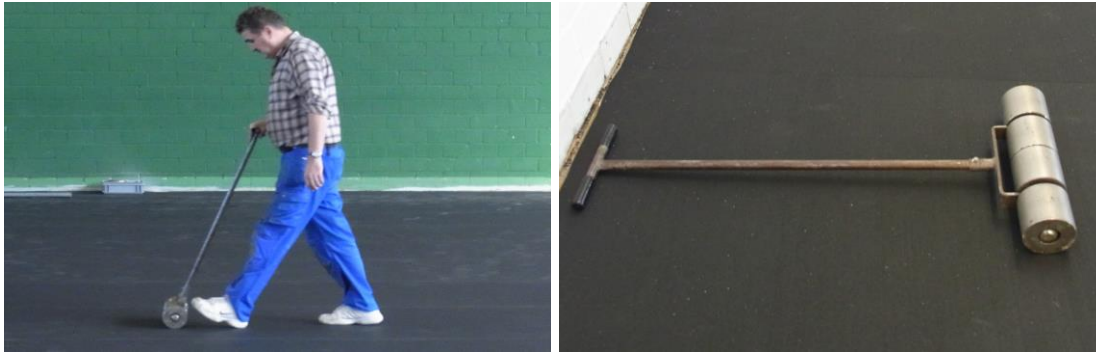


Rolling out the consecutive rolls in the same direction (**Attention, Sticker must be on the bottom side**)

As shown in the prior picture, where possible use material from the same production batch, and install rolls in ascending number order. To find the production batch reference and the roll numbers, refer to the labels on the underside of each roll.



After the adhesive has grabbed but before adhesive is fully cured, contact pressure should be applied to the surface with a roller to eliminate air bubbles underneath the material.



Scrolling of the floor with a pressure roller

5. intensive cleaning

After the installation of **SPORTEC®** flooring it is recommended to carry out a full surface clean of the entire area to reduce contaminate in the form of dust or residue.

A possible sealing layer must only be applied to completely cleaned surface.

6. Sealing/Coating

Depending on the final application, the flooring should be coated with the **RZ turbo protect zero** sealing lacquer (except UNI versa). In general, the material should be coated when flooring is used for indoor areas.



Applying of the coating

7. Important details

When using a primer or bonding agent, adhesive and sealing lacquer, pay attention to and follow the manufacturer's instructions and check the compatibility with the **SPORTEC®** flooring range.

Do not install on substrates with rising humidity. With appropriate humidity the substrate has to be prepared.

When calculating the needed amount of material, calculate with **3%** for **cut-off**.

Any glue that seeps up to the surface has to be removed immediately, and the affected area thoroughly cleaned with a wet cloth (water or a mild soap solution).

The **SPORTEC®** floor coverings can only be adhered to a dry and clean substrate.

Humidity levels should be measured (e.g. for CM measurement cement screed $\leq 2.0\%$; calcium sulphate screed $\leq 0.5\%$) in advance of installation to ensure compliance with adhesive requirements, and if necessary, the installation should be delayed.

After installation, take care to avoid walking on any of the floor surfaces until the adhesive is fully cured.

The **RZ turbo protect zero** sealer may only be applied to clean and dry surfaces. If necessary, delay the sealing in order to clean the surface and remove all contaminants before applying the sealer.

Do not allow any access to the sealed floor before the sealing material is completely cured.

In case of claims caused of mistakenly delivered goods, defective goods, insufficient quantities or other possible faults stop the installation and make a claim immediately. A claim of delivered material is only possible with untreated/uninstalled material and with a confirmation of the production batch reference number.

DISCLAIMER:

These recommendations for application and installation are based on our extensive experience and on current technological practice. Our liability and responsibility in the event of damages shall be limited to the extent defined in our General Terms and Conditions of Business, regardless of the above recommendations or of any statements made or advice given by our sales representatives or applications engineering staff.