

## Installation recommendation

This instruction is valid for the following **SPORTEC®** products: **shooting**, **shooting 43**, **shooting pro** and **shooting FR**.

### 1. Substrate

The substrate must be tested and evaluated before installation in accordance with the national standard (DIN 18365).

Suitable substrates are, for example, asphalt, concrete or screed. The substrate ready for covering must be pressure and tension resistant, even, permanently dry, load-bearing, clean and free of dirt and cracks that could impair the bonding.

The substrate must comply with the limit values for evenness deviations in accordance with DIN 18202 (increased requirements = max. 3 mm difference over a distance of 1 meter). Slight unevenness must be repaired with a suitable leveling compound.

Depending on the substrate, it may be advisable to prime the substrate with a suitable (barrier-) primer.

**SPORTEC®** shooting tiles should not be installed on loose or dynamic sub-bases. A solid base is required to ensure stability and performance.

For fixing on walls, a solid construction wall is best conditioned. In addition, other walls can be used for fixing when they reach the required regulations for shooting ranges and permanent fixing of the tiles is possible. Both, the existing ground and the wall must definitely be level, dry clean and firm.

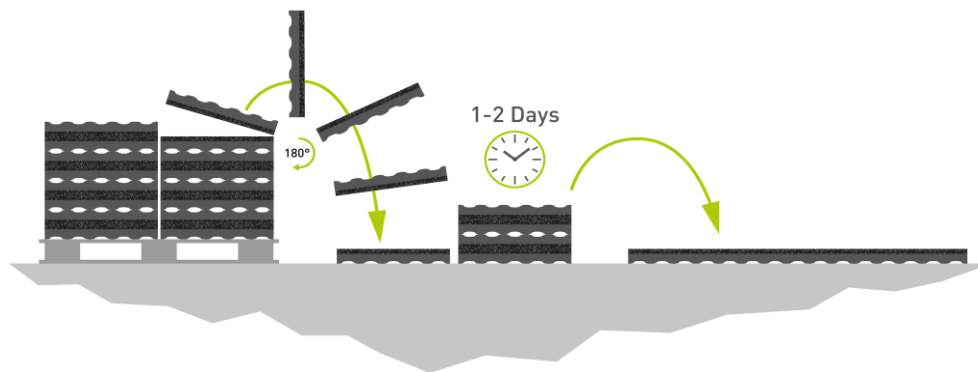


Suitable, solid surface

## 2. Preparation Work

The surface of the substrate has to be brushed clean before starting installation. Minor unevenness must be levelled with a liquid self-leveller or filler compound. The same obtain for fixing the tiles on walls. The surface of the wall has to be clean and free of any other pollution. Minor unevenness must be levelled with a filler compound before starting with the installation and wooden slats must affix on the wall.

Remove the tiles from the pallet, lay down loose on the ground and store them in the area you want to install for about 1-2 days before installation to ensure correct acclimation. In order to acclimate completely, the tiles should be stored in stacks of no greater than six tiles. Tiles should be stacked finish to finish, and dimpled edge to dimpled edge to protect the surface from scratches. The ambient temperature for installation of **SPORTEC®** shooting tiles should be between 10 °C and 25 °C.



For an accurate and easier installation, a chalk line should be used.



Creating chalk lines and laying the tiles along this line

The installation recommendation is not subject to any change service! All information is without guarantee.  
 Latest version of this document available on [www.kraiburg-relastec.com/sportec](http://www.kraiburg-relastec.com/sportec)

If a PU coating will be applied to the flooring, it is recommended to glue the tiles down to the substrate. Before installation, mix both components of adhesive. Follow adhesive manufacturer's instructions. It may also be useful to add glue to the corners of the tile, for a better adhesion.

### 3. Installation on substrate

Spread the adhesive evenly over the surface with a notched trowel and then place the first tile against the wall/edge and start laying.

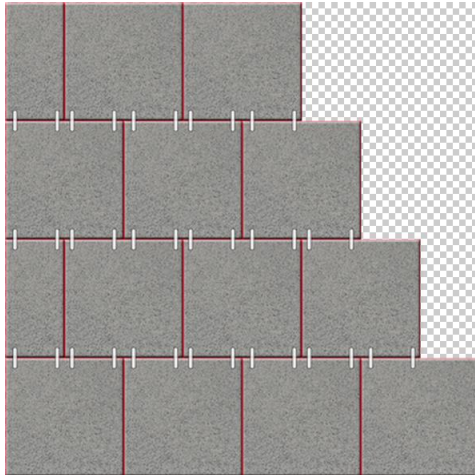
To do this, lay one tile next to the other along the chalk line or the edging so that no joint is left between the tiles. In the case of curves and edges, start at this point and cut the slabs into the respective shape to then obtain a straight contact surface for the second row.



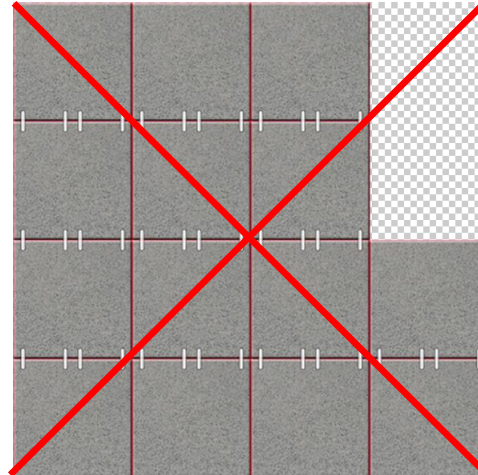
Installation of the tiles along an edging



Start the second row of tiles with half a tile so that the tiles can be laid in a T-joint bond. The tiles are to be plugged together with the supplied connector pins.



Correct installation in brick bond format;  
With "T" junctions

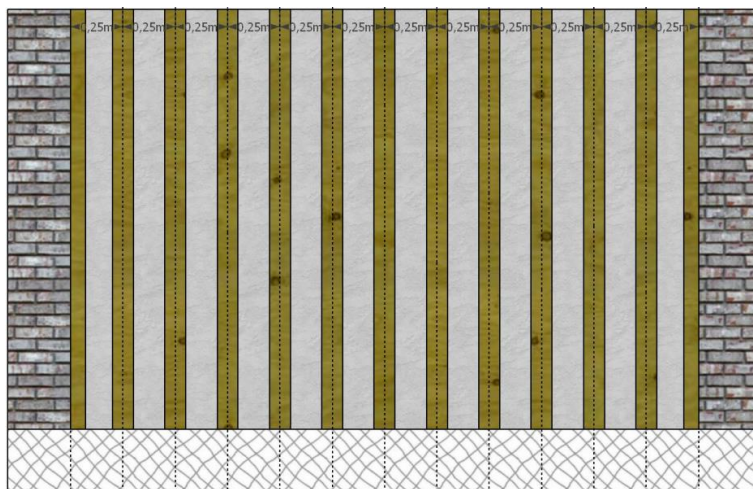


incorrect installation in grid formation  
with Cross junctions

Then coat the installed surface with a PU coating (Bfl-s1) so that residues of the black powder can be removed by wiping without leaving any residues.

#### 4. Installation on walls

For installation, fasten wooden slats (approx. 10cm) with dowel and screw by that way that it carries the weight of the tiles. Fit the wooden slats regular in a distance of 25cm to each other on the wall.

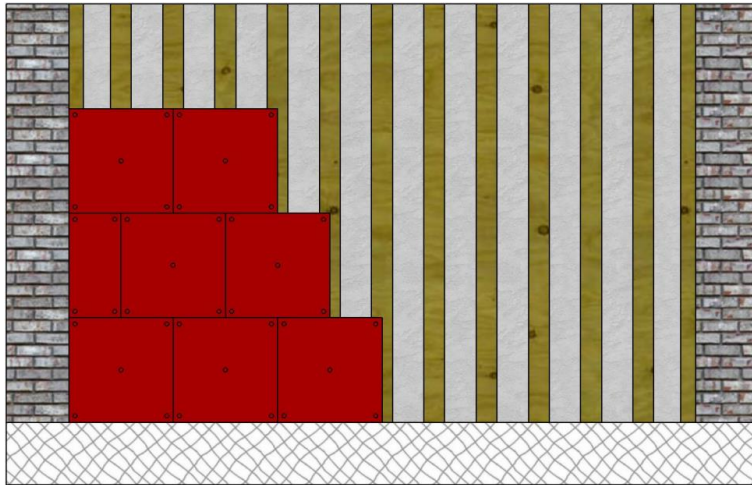


Fixed wooden slats on the wall

The installation recommendation is not subject to any change service! All information is without guarantee.  
 Latest version of this document available on [www.kraiburg-relastec.com/sportec](http://www.kraiburg-relastec.com/sportec)

page 4 of 6

When wooden slats are fixed on the wall, attach the tiles on the wall by screwing it on the wooden slats. Therefore screw the tiles by that way that a distance of 3cm to each tile edge is ensured, fixing the screw into the wooden slats, the screw head disappear into the tile and tile is pressed to the wooden slats. Fix a tile with 5 screws, one in each corner and the last one centered in the middle of the tile. Tiles with a width of 1000mm need 8 screws for fixing. If tile is attached and screwed to the wooden slats, lay on the next one and proceed the fixing in the same way. Start second row with a half tile, third row with a full tile again and consecutive in this procedure.



Screwing of the tiles with 5 screws

## 5. Important details

When using a primer or bonding agent, adhesive and PU self-leveling coating pay attention to, and follow the manufacturer's instructions and check the compatibility to **SPORTEC®** products. For applying of PU coating for the substrate installation pay attention and following manufacturer's instructions and regard local laws and standards.

When calculating the needed amount of material, calculate with **3%** for **cut-off**.

The tiles may only be installed on leveled, dry and clean substrate.

When possible, the installation should be done in one day so that all tiles are installed under the same ambient conditions.

**SPORTEC®** tiles with a thickness of **up to 30mm** can be cut into the required shape with a jigsaw, a hand-held circular saw, a band saw or a sharp cutting knife.

**SPORTEC®** tiles with a thickness of **more than 30mm** should no longer be cut with a cutting knife, as the material is way too thick to cut safely and easily into the desired shape.

We recommend using a hand-held circular saw (at least 1400 watts, 5500 rpm, and 67 mm cutting depth) with coarse teeth to ensure precise and clean cuts. Alternatively a band saw or jigsaw (suitable blades = Bosch T345XF/T313AW in combination with a high stroke rate) can be used here, but please make sure that the tiles are securely fixed in place, as otherwise vibrations in the material can be transmitted to the blade during the cutting movement, which can lead to inaccurate cuts or bending of the blade.

Required tools for the installation:



Gloves



Measuring tape



Knife



Chalk line

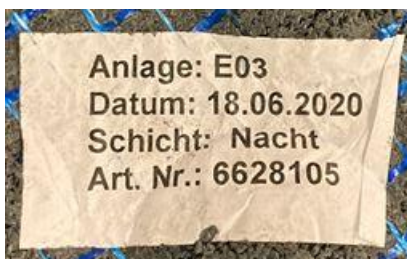


Jigsaw


 Hand-held  
circular saw


Band saw

**In case of claims caused of falsely delivered goods, defect goods, insufficient quantities or other possible faults make a claim immediately and stop the installation directly. A claim of delivered material is only possible with untreated material and with declaration of the order number or production batch reference number, printed on the side of tile.**



#### DISCLAIMER:

These recommendations for applications and installation are based on our extensive experience and on current technological practice. Our liability and responsibility in the event of damages shall be limited to the extent defined in our General Terms and Conditions of Business, regardless of the above recommendations or of any statements made or advice given by our sales representatives or applications engineering staff.

The installation recommendation is not subject to any change service! All information is without guarantee.

Latest version of this document available on [www.kraiburg-relastec.com/sportec](http://www.kraiburg-relastec.com/sportec)

page 6 of 6