

Installation Instruction

Storage of EUROFLEX® products and adhesive cements

EUROFLEX® products should normally be stored in dry areas at a constant temperature above 10°C. If stored below 10°C, slabs must be retained at the installation site temperature (above 10°C) for at least 2 hours prior to installation.

Important note: Adhesive cements and design flooring must be stored at all times in dry locations above 0°C.

Required Tools and materials

Cut heavy-duty cutting knife (Hooked blades for the covering), pad saw, T-square for cutting assistance, carpet ruler



Mark plumbs or chalk line, chalk, and measuring tape



Gluing crepe adhesive tape, drilling machine with mixer tool for handling the 2 component polyurethane glue, spatula TKB B2, work glove



All information without guarantee, subject to change. The installation instruction is not subject to any change service. Each current and valid from can be recalled at www.kraiburg-relastec.com/euroflex/

page 1 of 13

Installation Design flooring pressure roller, pressure roller, rub-on cork



Preparation of subbase Substrate

The testing and preparation of substrates shall be conducted in accordance with VOB Part C, DIN 18365, and the state of the art shall be assessed and ready for installation. The substrate shall be level, sound, dry, free from cracks, clean, and devoid of any materials that could impair adhesion.

The following limits apply to the residual moisture of screeds:

Screeds	Permissible residual moisture in CM-% without hot water Underfloor heating	Permissible residual moisture in CM-% with hot water Underfloor heating
Calcium sulfate and calcium sulfate flowing screed	$\leq 0,5$	$\leq 0,3$
cement screed	$\leq 2,0$	$\leq 1,8$

For installation at ground level, the basement should be removed to the required depth, plus the thickness of the slabs and the layer.

For installation on an existing subbase, it is recommended to use the EUROFLEX® edge and corner profile as the bordering.

Installation playing equipment's
Install at first the playing equipment's.



For complicated playground equipment constructions such as the following:
(Playing equipment company Proudba)



All information without guarantee, subject to change. The installation instruction is not subject to any change service. Each current and valid from can be recalled at www.kraiburg-relastec.com/euroflex/

page 3 of 13

It is strongly recommended to install only the essential foundation fasteners to facilitate the installation of the panels and vinyl flooring.

Clean the subbase and remove any stock from the pallet to streamline the process.



Installation slabs

Install the first row of EUROFLEX® slabs by placing them precisely along the chalk line or if possible start at a wall side.



Begin the second row (and every alternate row thereafter) with a half slab. Connect the slabs of the second row to the first row using the integrated connector pins.

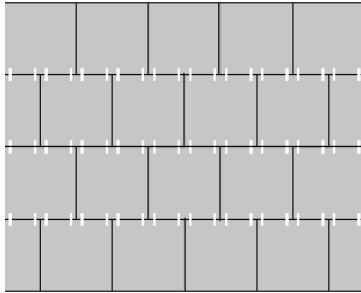
The masonry-style configuration provides stability for the installed slabs.

Cut the last slab in each row to the required size using a heavy-duty carpet knife or a sabre saw.

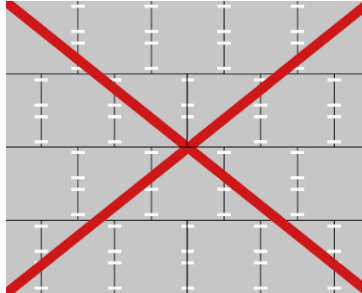
All information without guarantee, subject to change. The installation instruction is not subject to any change service. Each current and valid from can be recalled at www.kraiburg-relastec.com/euroflex/

page 4 of 13

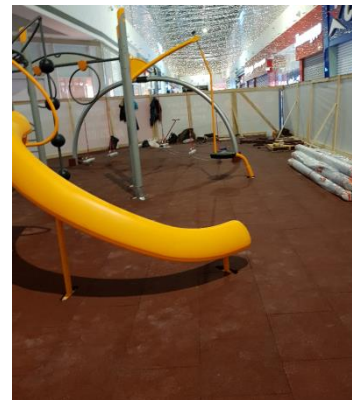
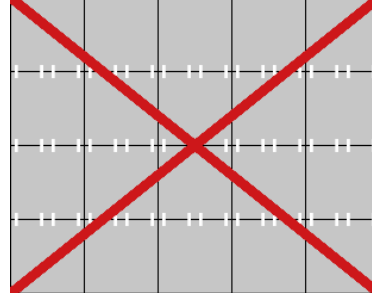
Correct: „T“-joints



**Incorrect: „T“-joints
Installed in line**



Incorrect: cross joints



Cut-out at the equipment base should be cut accurate.



All information without guarantee, subject to change. The installation instruction is not subject to any change service. Each current and valid from can be recalled at www.kraiburg-relastec.com/euroflex/

page 5 of 13

- Cutting with a knife



Or with a pad saw wooden blade:

Mark the cut-out and cut



Clean the installed area very well.



By employing the EUROFLEX® edge and corner profile as borders, it is required to glue them to the subbase and to the first row of slabs.

The cutting of the design layer will be performed precisely according to the attached delivered cut plan.

Attention! Please calculate minimum 5cm circular material more for offcut.

The covering must remain free of kinks, as visible kinks may be present.

All information without guarantee, subject to change. The installation instruction is not subject to any change service. Each current and valid from can be recalled at www.kraiburg-relastec.com/euroflex/

page 6 of 13

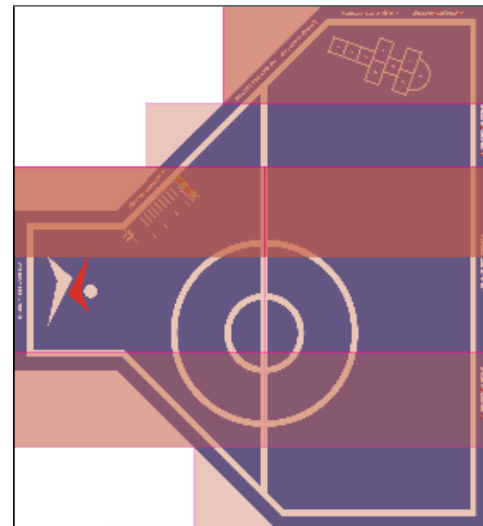
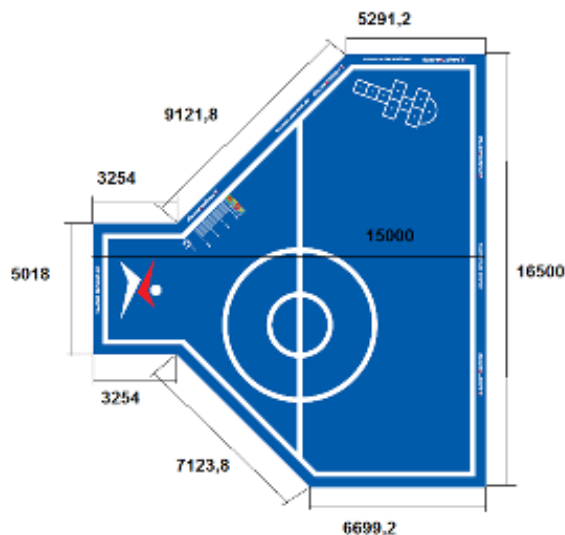
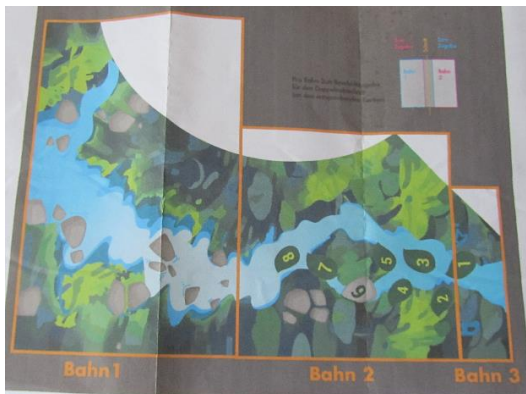
Inspect the goods for material and transport damage prior to processing and in daylight. If defects are detected during installation, halt processing immediately so the goods can be inspected or, if necessary, exchanged. Subsequent complaints will not be accepted. Before installing vinyl flooring, allow the sheets to acclimate for a period of at least 48 hours in the installation rooms or in adjacent rooms with equivalent room conditions. In principle, make a seam in the area of the production edge (double-seam cut). Allow the web edges to overlap by 2 cm per web and, if necessary, adjust the motif from the center.

Roughly precut the walls and rising components, etc.
Cut the overlapping web edges along a steel rail with a double-seam trim.
Suitable special tools may also be used for seam trimming.
After the double-seam cut, fold back the sheets to approximately half lengthwise or crosswise (depending on the room layout) and apply an appropriate adhesive.
Pay particular attention to the adhesive manufacturer's specifications.

Depending on the installer's skill, the strips can be produced using double cuts.



For inexperienced installers, it is recommended that the individual strips be cut to the exact design before applying adhesive.



Inspect the sheets for material defects during installation.
Membranes with visible defects must not be installed.
Installed membranes with visible defects are excluded from claims.

All information without guarantee, subject to change. The installation instruction is not subject to any change service. Each current and valid from can be recalled at www.kraiburg-relastec.com/euroflex/

page 8 of 13

For adhering the visual layer to the EUROFLEX® impact protection slabs, it is recommended to use Sportec 700 2-K polyurethane glue or an equivalent product. Both components of the adhesive must be mixed thoroughly before application.



The application of the glue happens in lane usage approx. 1kg/m².



Each lane must be pressed into the glue bed using a rubber-cork roller or pressure roller. To prevent glue from transferring to the layer material, use crepe adhesive tape to protect the joint areas. Glue spots on the layer must be removed immediately.



All information without guarantee, subject to change. The installation instruction is not subject to any change service. Each current and valid from can be recalled at www.kraiburg-relastec.com/euroflex/

page 9 of 13

Cutouts for unit feet

The cutouts for the unit feet, fasteners, and related components must be made as accurately as possible and cut so that they fit precisely when assembled.

To achieve this, begin by making straight cuts into the area surrounding the unit feet.



When using a cutter knife equipped with a round blade, the recesses can then be cut precisely.



All information without guarantee, subject to change. The installation instruction is not subject to any change service. Each current and valid from can be recalled at www.kraiburg-relastec.com/euroflex/

page 10 of 13



Recesses in device feet

The recesses for the device feet, fastening elements, and related components must be as precise as possible and must be glued with high precision.

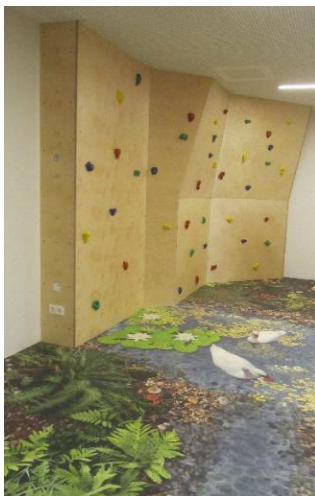


All information without guarantee, subject to change. The installation instruction is not subject to any change service. Each current and valid from can be recalled at www.kraiburg-relastec.com/euroflex/

page 11 of 13



After a period of approximately 30–45 minutes (depending on the room's climatic conditions), the covering must be re-rubbed or re-rolled using a roller with a cross-sectional profile.



With Visual flooring, a corresponding polyurethane seal is already provided at the factory upset.

The design floor covering can also be cold welded if required. This should be performed using cold welding agent Type T (e.g., <https://www.mueller-pvc-naht.de/produkte/typ-t/>). In any case, the specifications of the cold welding agent manufacturer must be observed.

**It is essential that the substrate is even to prevent imprinting of the tile contour.
This is not a basis for complaint.**

All information without guarantee, subject to change. The installation instruction is not subject to any change service. Each current and valid from can be recalled at www.kraiburg-relastec.com/euroflex/

page 12 of 13

Cleaning and Care Instructions

The design floor is easy to clean and maintain due to its finished surface.

To ensure longevity and lasting enjoyment, the following value-preserving guidelines should always be observed.

Only clean the floor covering with a broom, vacuum cleaner, or damp cloths or mops.

Cleaning Machine

For professional cleaning, we recommend the Cleanfox cleaning machine from Wolff (or an equivalent device).



There are different brushes compatible with this machine:

- For basic cleaning, use the blue bristle, a medium-hard brush.
- For regular cleaning, use the gray brush with soft bristles.

Alternative to the cleaning machine A commercially available scrubbing brush with soft or medium-hard bristles can also be used for regular cleaning of small areas, for example the soft/hard broom from Vikan.

A scrubbing brush with hard bristles should be selected for basic or initial cleaning.

Important: When cleaning by hand with a broom or scrubber, any excess liquid must be removed or absorbed afterward.



Additional protection through sealing

For sealing, we recommend the 2K PU sealer RZ Turbo Protect plus. (or a comparable PU sealer, e.g. the 2K PU from Dr. Schutz)

Pallmann's sales network is good and there is always a partner nearby:

<https://de.pallmann.net/service/grosshandelspartner>

ATTENTION!

Cleaning with rotating brush systems is prohibited.

We do not accept any warranty if this important detail is not observed.

The use of cleaning agents and/or cleaning machines and/or cleaning methods (e.g. with superheated steam) that have not been approved by KRAIBURG Relastec will invalidate the warranty.

All information without guarantee, subject to change. The installation instruction is not subject to any change service. Each current and valid from can be recalled at www.kraiburg-relastec.com/euroflex/

page 13 of 13