

## 1. Applications

EUROFLEX® Mushrooms are available in different heights, allowing creation of playing areas for all age groups. The rubber material used is comfortable to sit on, dries quickly when wet, is highly resistant to weathering, does not splinter and is soft and therefore safe.

Easy and inexpensive to install.

EUROFLEX® Mushrooms are manufactured by an environment-friendly process and can be recycled as process raw material at the end of their service life.

They can be played on under almost any weather conditions.

## 2. Material

Rubber granulate:	granulated recycled rubber
Binding agent:	MDI polyurethane
Mushroom Caps:	EPDM rubber granulate
Binding agent:	MDI polyurethane

## 3. Characteristics

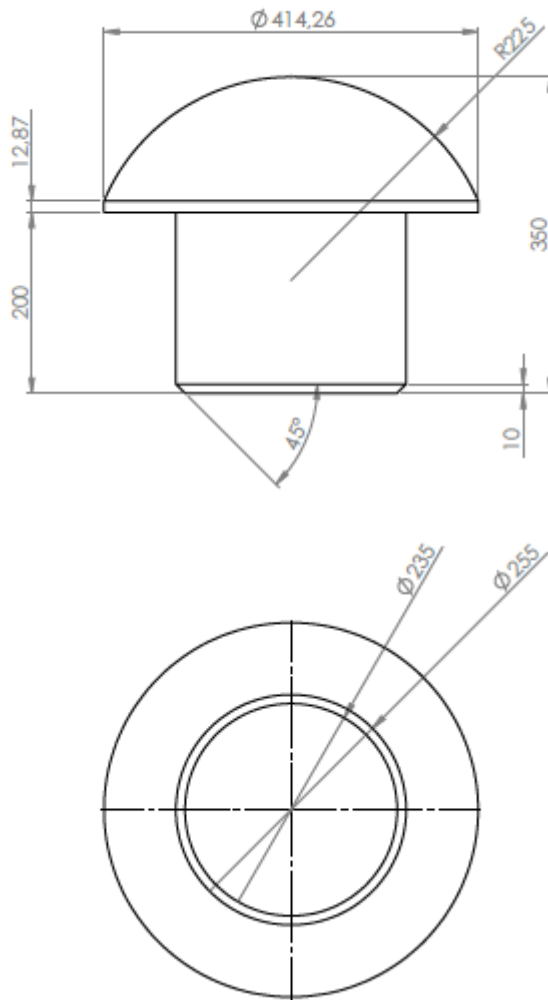
Colour for Cap:	red RAL 3016, green RAL 6021, yellow RAL 1002, blue RAL 5015 Other colour on request Spots are variable in colour
Colour for Stems:	reddish brown minor colour variations and/or fading possible

**ATTENTION: the color specification base on RAL and may differ from the product.**

## 4. Dimensions / Tolerances

Dimensions / Weight:	200 x 255 mm (including socket) / approx. 8,0 kg/ unit 300 x 255 mm (including socket) / approx. 13,0 kg/ unit 400 x 255 mm (including socket) / approx. 16,0 kg/ unit 500 x 255 mm (including socket) / approx. 20,0 kg/ unit
----------------------	---

Mushroom Cap:	Weight: approx. 13 kg
---------------	-----------------------



## 5. Test Data

Conformity acc. to Regulation (EC) 1907/2006 SVHC list and appendix XVII

Production facility inspection

## 6. Installation

Use installation bar to screw socket into ground. Continue to screw in until top edge of socket is at ground level. Insert reducing adapter into socket. Insert metal pipe.

Fix in place by tightening screw.

Note the complete installation instruction.