

Substructure

The substructure must be frost-stable to a required level.

The stepping blocks may be installed directly on a firmly compacted, stable-bearing substructure.

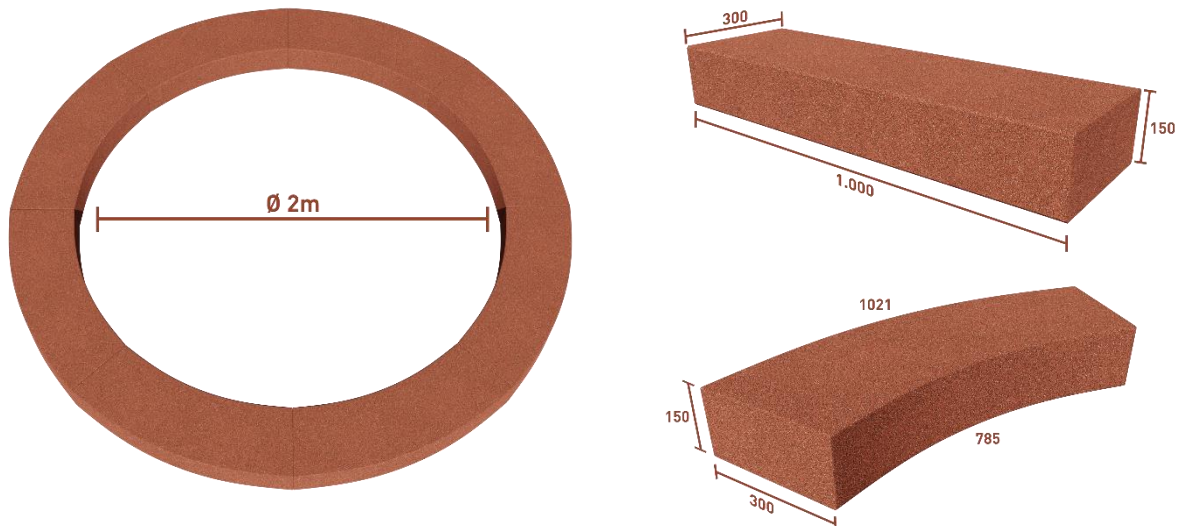
The preferred substructure is a level, smooth-surfaced strip foundation.

EUROFLEX® Step Blocks may also be installed in a prepared fresh concrete bed (Grade B 15) with a stable, compacted substructure supporting the load.

If the substructure is an existing paved surface (e.g., concrete or asphalt), level any irregularities (e.g., with leveling mortar). The stepping blocks must be bonded to adjacent blocks and/or to the substructure.

Ensure adequate slope or water permeability of the substructure to facilitate drainage.

If the substructure is not water-permeable, provide a drainage system.



Installation

Variant 1:

The EUROFLEX® block steps may be glued or screwed to cleaned, dry, and smooth concrete within an existing concrete substructure using a one-component polyurethane (PUR) adhesive. Bond the joints between adjacent block steps. The required length and miter cuts can be readily achieved with a chainsaw or a hacksaw.



Variant 2:

You may also use the EUROFLEX® block step without gluing it to the substrate.

Place the substrate directly on fresh concrete (B15).

To do this, drive several galvanized hexagon-head screws, 10 x 200 mm, at least 70 mm into the rubber and set the block step with the screw heads embedded in the fresh concrete.

Glue or joint the joints between adjacent block steps.

To minimize sunlight-induced discoloration, always cover the goods completely with the UV-protective film (as delivered from the factory) until installation.

The block step can be cut with a plunge-cut saw or a chainsaw.

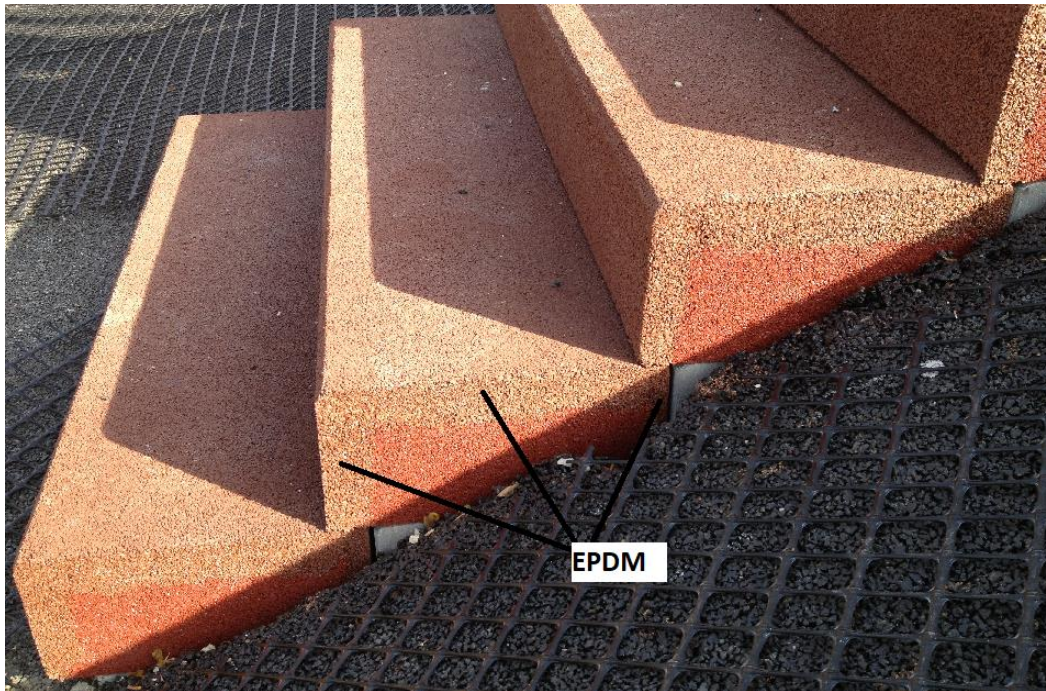


For staircase design, the block steps are either glued to a strip foundation or installed into stable fresh concrete.



Laying of EPDM-coated block step

Ensure that the uncoated side is oriented toward the subsurface.



Gluing instructions

Glue requirement: 1 cartridge 310 ml for approx. 3-4 running meters or 1m²

Adhesive:

We recommend the adhesive Ottocoll P83 (gray) or Ottocoll M 500 (red), which can be obtained from us. The warranty is void if any untested adhesives are used.

Work preparation:

The surfaces must be clean, dry, and free of grease. Liability and compatibility with plastics and paints must be evaluated on a project-specific basis.

Caution: Natural stone may discolor.

Gluings:

Apply the adhesive from the syringe to the substrate. The thickness of application depends on the nature of the materials being bonded. Insert the counter material within 10 minutes and apply pressure. Due to the paste-like consistency of the material, it is advisable to secure the assembly. Hardening depends on layer thickness and ambient humidity.

Processing temperature: 5 °C to 40 °C (41 °F to 104 °F) Skin formation time at 23 °C: approximately 20 minutes Full cure time at 23 °C: approximately 24 hours