

GDI

HAML Operators

Direct Drive and Jackshaft

Hollow Shaft, Heavy Duty, High Cycle
Commercial and Industrial Doors

HAML Operator Family

Application	Product	Open/Close Cycles/Day	Max. Speed RPM
Medium Speed	HAML-RBH	5,000	65
High Speed	HAML-RCH	5,000	115
High Speed	HAML-RDH	5,000	190
Very Heavy Duty	HAML-HR10	5,000	35



Applications

Car dealership, Car wash, Cold storage, Pharmaceutical, Food facility, Shutter, Agricultural, Rolling steel, Grilles, Roll-up fabric, Sectional doors, Rubber doors, Condominium, Parking garage, Horizontal doors, Mining underground air flow control, Hangar doors, and more ...

Features

- 1" or 1 ¼" hollow shaft
- Solid shaft adaptors available
- Fast open and close speeds independently set
- High cycle - up to 5,000 open/close cycles/day
- Adjustable timer to close up to 240 seconds
- Smooth open/close movement
- Soft start/stop - reduces mechanical stress on door and components
- Ultra quiet - no transmitted noise into building
- On site speed adjustment capability
- Double shielded stainless steel bearings
- One operator can handle all AC voltages - Single phase and three phase; 115, 208, 230, 460, 575; 50/60 Hz
- Battery backup – Provides for operation if AC power is lost
- Electronically set door open and close limits - No mechanical switches
- PositionTrak™ tracks and remembers door open/close position if power to the operator is lost – No re-setting of limits once installed
- UL325 compliant (Optional)
- UL/ULC listed
- Automatic calibration for door size
- Electronic clutch
- Eight inputs (open, close, stop, safety, open/close, UL325 [optional], door lock) site modifiable
- Three outputs can indicate when door is moving and door open and close status - to control external accessories
- Side mount bracket or anti-rotation bracket
- NEMA1 or NEMA4 (NEMA1 control panel shown)

CHARACTERISTICS	HAML
Dimension	16" x 4.3" x 4.3" (16.8" HR10)
Motor type	Brushless DC
Voltage selection (AC) - Single phase or three phase	115, 208, 230, 460, 575 50/60 Hz
Max Cycles (open/close) per day	5,000
Limit switches	Electronically Set Limits
Calibration	Automatic/Manual Jog
Position tracking	40-day PositionTrak™
UL325	Available
Re-open after obstruction	Yes; Adj delay 0 to 20 sec.
Weight (lbs.)	30 (Gear motor)
Power for accessories	24 VAC 1 Amp. 24 VDC 1.5 Amp.
Battery indication	Yes
Solar power capable	Yes
Adjustable force based obstruction sensing on close (Non UL325 only)	Yes
Timer to close	Yes (0 to 240 sec.)
Mechanical Noise isolation	Not required, Ultra quiet motor
Controls at eye level	Yes
Eye level LCD readout for cycle count status	Yes
Programmable inputs and outputs	Yes
Inputs	8
Outputs	3
Maintenance free sealed motor	Yes
Obstruction Sensing	Yes
Delay to close	Yes
Delay to re-open	Yes
Energy mgmt. (min. heat dissipation)	Yes
Door lock on panel	Yes
Ease of installation	Colour coded wires, Polarized connectors, LCD status display
UL/ULC controller	Yes
UL/ULC panel	Yes
UL/ULC motor	Yes
Onboard system status messages	Yes
Family members	HAML-RBH, RCH, RDH, HR-10

Benefits

- GearMotors are sealed; don't require maintenance
- Aluminum GearMotor body can withstand corrosive and toxic environments.
- Work in wet and in cold temperature environments
- Electronic clutch can prevent door/frame damage
- Obstruction sensing available

Add-on features

Can be ordered any time for field upgrade

- Battery backup
- Chain hoist
- Chain hoist with brake
- Solid shaft adaptor 1" x 3" with keyway
- Solid shaft adaptor 1.25" x 3" with keyway
- Custom Shaft Adaptor (1 1/2" etc.)
- Traffic control (loop sensors)
- Photo-eye
- Wireless Receiver and Transmitters

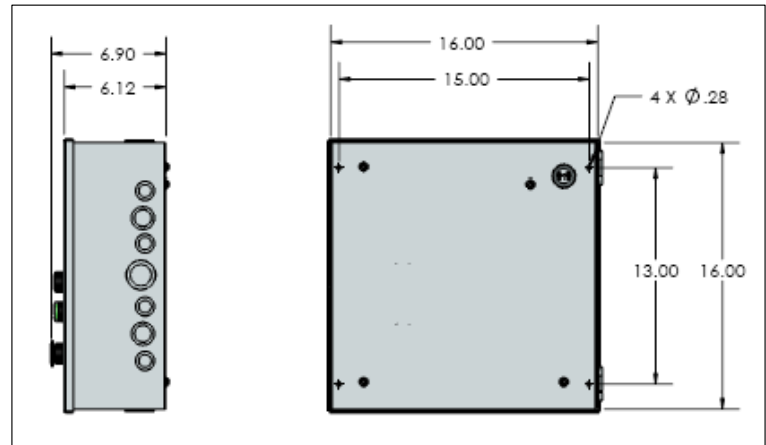
Available with operator order only

- UL-325 with NEMA4 photo-eye
- Optical isolation for electrically noisy environments
- 1" or 1 1/4" hollow shaft
- NEMA4 16" H x 14" W x 8" D panel
- Optional buttons (Optional front Panel Open, Close, Stop for NEMA1 or NEMA4 panels)
- Panel mounted Key Switch

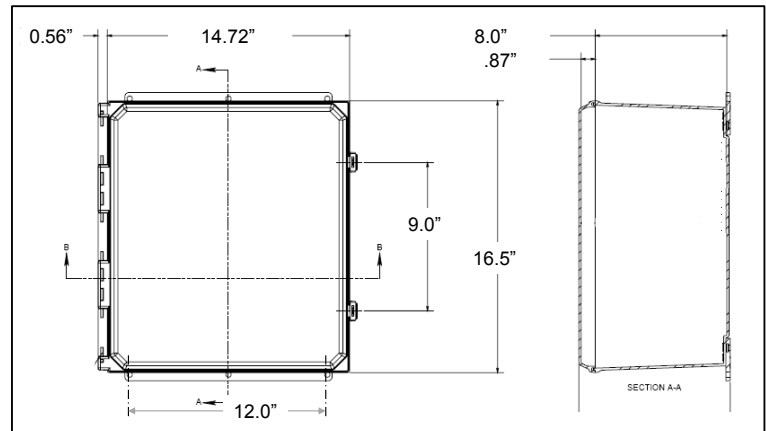
Power

- Brushless DC, high reliability, high efficiency motor
- Each operator can be connected to any of the following AC voltages; 115, 208, 230, 460, 575VAC single/three phase, 50/60Hz
- Battery backup add on - Intelligent, internal battery charger
- 24 VAC 1 Amp for external devices
- 24 VDC 1.5 Amp for external devices

Control Panel

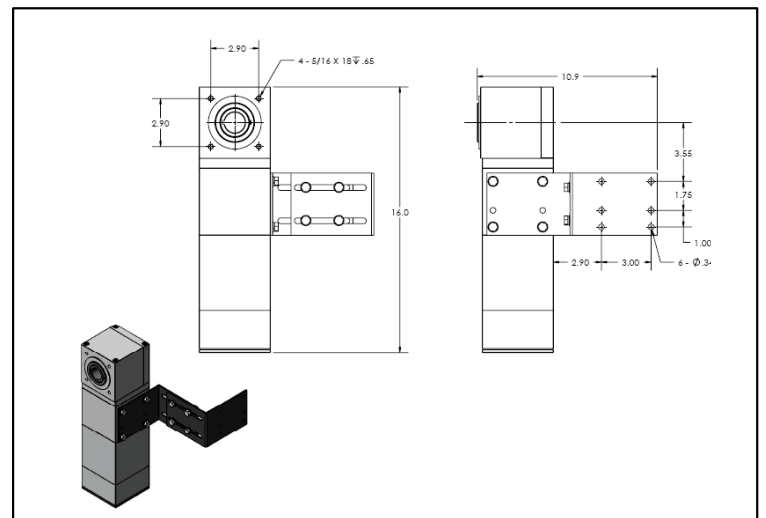


NEMA1 Panel (with optional open, close, stop buttons)



NEMA4 Panel (optional)

GearMotor™ Mounting



GDI reserves the right to modify the contents without prior notification.

Gates and Doors Inc.

60 Ferrier St., Markham, Ontario, Canada, L3R 2Z5

Tel: 905-947-4300 www.gatesanddoorsinc.com sales@gatesanddoorsinc.com Ver. 2.1