

## JDMG-LG Jackshaft Operator

(sprocket to sprocket)

Commercial and Medium Duty Industrial Operator

### Specifications:

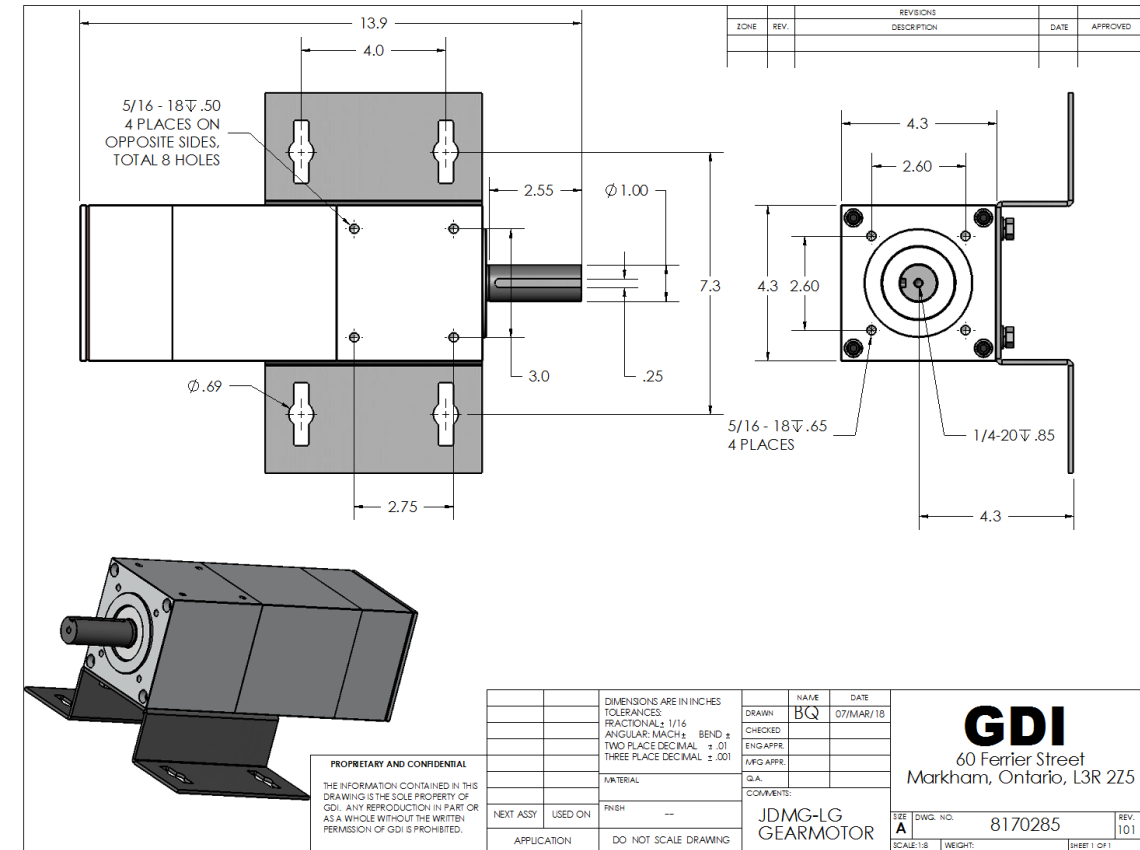
UL 325 Compliant

3200 Open/Close Cycles/day

Operator works with 115, 208, 230, 460, 575VAC 50/60Hz

**The JDMG-LG operator is available in 3 models:**

- Standard 16"x16"x6" enclosure Nema 1 rating  
JDMG-LG-2030-NLF0000408-1000
- Ultra compact 12"x12"x4" enclosure Nema 1 rating  
JDMG-LG-1030-NLF0000408-1000
- 16"x14"x7" enclosure Nema4/4x rating, and water tight motor  
\_JDMG-LG-A830-NLF0000408-1000



### Accessories:

- JDMG Trolley Add-on kit:  
Converts the JDMG-LG jackshaft operator into a trolley operator.

Brackets only:

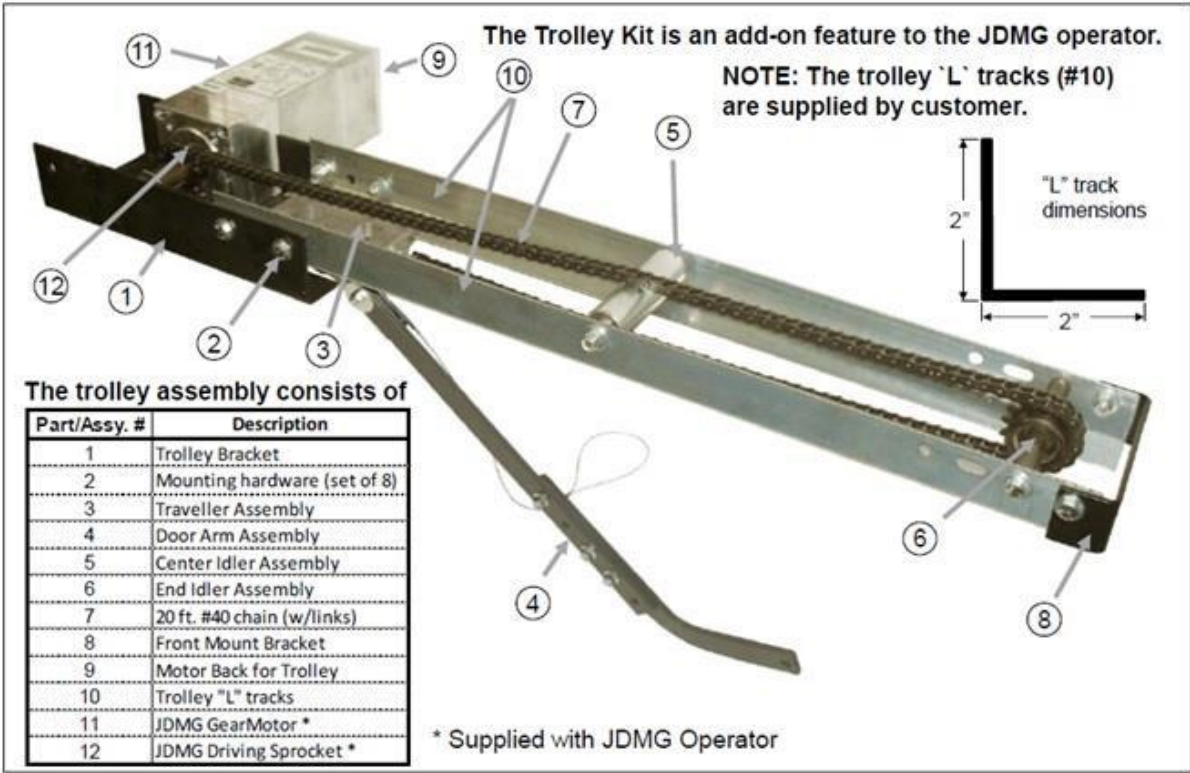


16"x16"x6" Nema1  
control panel with optional  
Push buttons

(Nema4/4X available)



JDMG-LG gearmotor

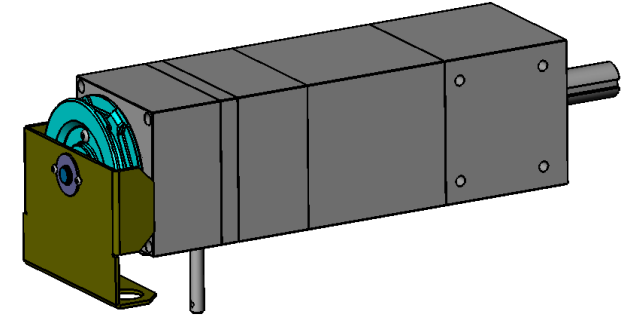
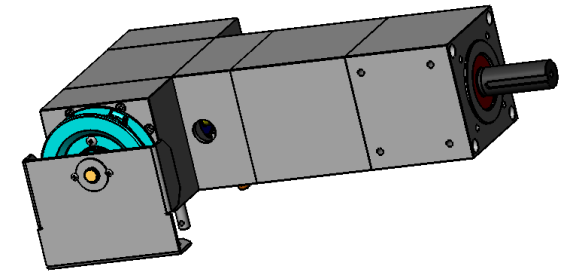
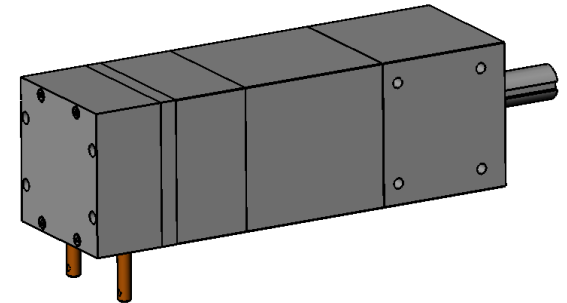


REQUIRES ONLY 4.75" of headroom

\*The installer is to provide the rails (item #10 in the drawing above) and the #40 chain for the trolley add on kit.

**Accessories** (detailed list available):

- Hoist:  
Allows for manual operation of gear motor  
(floor level release and water tight)
- Hoist with brake:  
Allows for manual operation of gear motor with brake (floor level  
release and water tight)
- Brake:  
Brake on gear motor (floor level release water tight)
- Panel mounted buttons:  
Open/Close/Stop buttons mounted on front of enclosure (nema4/4x  
rated buttons)
- Battery back-up:  
36VDC battery back-up offering typically 50 to 200 cycles of  
operation on AC power loss (when using the Ultra compact  
enclosure battery back-up will go into a separate enclosure)
- UL-325 monitored photo eyes:  
Fraba through-beam monitored safety eyes

**Hoist****Hoist with brake****Brake**

Sizing the Driven Sprocket for your Jackshaft operator

- 1. The Driving Sprocket (#40, ~2” diameter) is included with your operator.
- 2. Use the chart to the right (“Balanced Doors: Sprocket to Sprocket”) with the line for your Door Type and Door Weight. Then use the Driven Sprocket Diameter information to select the size of the Driven Sprocket.
- 3. The Top Door Speed shown in the chart should not be exceeded.

What you get and what you need:

The operator is supplied with a 10’ wire harness that can be extended on request. It is up to the installer to provide the correct ½” conduit as per the application and corresponding code.

If the operator is installed without a monitored safety device than the closing cycle will require constant pressure to close.

Installer to supply sprocket (driven).

Balanced Doors; Sprocket to Sprocket driving			
Door Type	Door Weight	Driven Sprocket Diameter (inches)	Top Door Speed (in./sec.)
Sectional	Up to 500 lb.	50% of max drum diameter*	25
Sectional	500 to 1,000 lb.	70% of max drum diameter*	20
Sectional	1,000 to 2,000 lb	Same as max drum diameter*	15
Vinyl, Fabric Roll up	Up to 500 lb.	50% of max roll diameter	25
Vinyl, Fabric Roll up	500 to 1,000 lb.	70% of max roll diameter	20
Vinyl, Fabric Roll up	1,000 to 2,000 lb	Same as max roll diameter	15
Rolling Steel	Up 1,000 lb.	Same as max roll diameter	15

\*Note: drum diameter is measured from where the cable comes off the drum at the fully closed position

Balanced Sectional Doors can be Standard, High or Vertical Lift

**When a brake is required**

1. On roll up doors with heavy curtain weight
2. On all rolling steel doors
3. On vertical lift and high lift sectional doors.
4. On heavy standard lift sectional doors.
5. Brake can refer to brake or brake with hoist