

T-Piece

With dol-sensors' specially designed T-piece you can easily mount your capacitive sensors on a pipe.



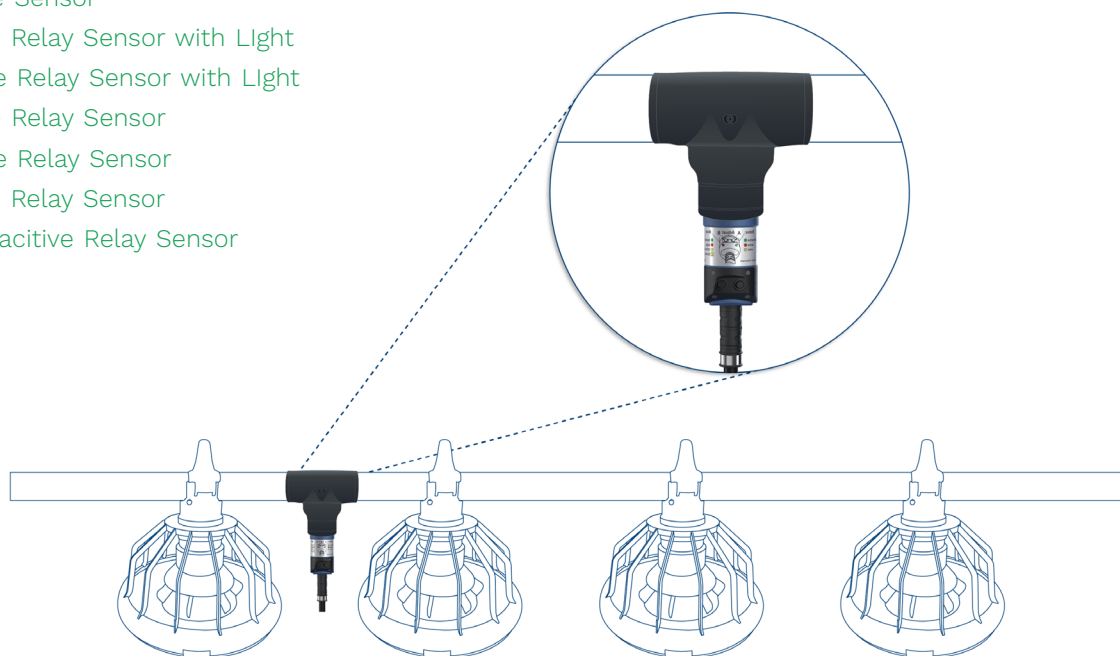
Adjust without removing

The T-Piece allows for adjustment of the sensor without removing the sensor

All sensor controls on DOL sensors remain fully accessible when installed in the T-piece, which means that the sensors can be adjusted without removing them.

You can use the T-piece with any standard 30 mm sensors and these DOL sensors with smooth housing:

- iDOL 27 Capacitive Sensor
- DOL 28 Capacitive Relay Sensor with Light
- iDOL 28 Capacitive Relay Sensor with Light
- DOL 44 Capacitive Relay Sensor
- iDOL 44 Capacitive Relay Sensor
- DOL 45 Capacitive Relay Sensor
- iDOL 46 ATEX Capacitive Relay Sensor



Example of DOL 45 mounted with the T-piece on a 40-60mm tube with conveying system



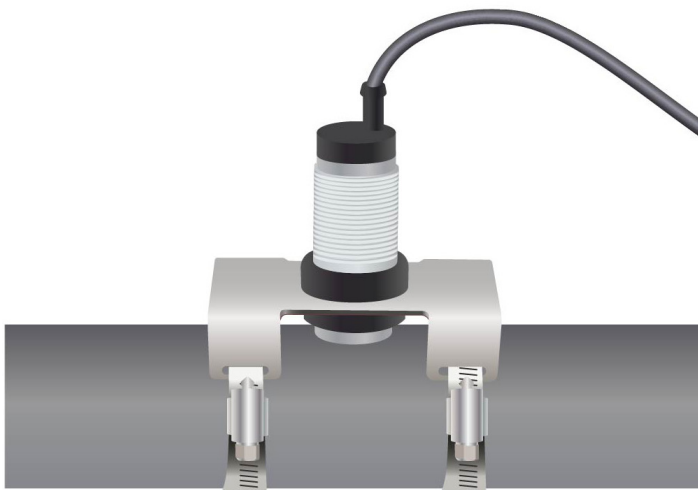
[Watch the video on our YouTube channel](#)

Tool-Free Installation

The T-Piece offers a durable, rust-free mounting solution for pipes, ensuring simplified, tool-free sensor installation.

We know that installing sensors on a pipe can be a bit tricky, which is why we designed the T-piece. The T-piece is made of flexible plastic to make it easier to fit on pipes between 40 and 60 mm. Since there are no metal parts on the T-piece, it lasts longer and there is no risk of rust.

The sensor can be mounted on plastic pipes with conveying system using only the T-piece and three zip ties which means that no screws or tools are required.



Normal Pipe Mounting

The normal pipe mounting options on the market are made of different components;

- a rubber grommet
- a nut
- a metal brackets
- two metal clamp bands

While installing the sensor you will have to be precise in terms of angle and there is a risk of damaging the sensor if tightened too much.

dol-sensors' 4-Step Installation

With our simple solution for pipe mounting there are only 4-steps for installing your 30 mm capacitive sensor on a pipe:

1. Place the T-piece around the 40-60 mm plastic pipe.
2. Tie it with two zip ties.
3. Put the sensor inside the T-piece.
4. Secure the sensor with a zip tie.

With our T-Piece there is no need for tools or alignment of the sensor in a certain angle. Furthermore, there is no risk of damaging the sensor or pipe during installation.

Our T-piece have no metal parts and thus do not rust.





dol-sensors A/S
Agro Food Park 15
8200 Aarhus N Denmark
Tlf. +45 72 17 88 88
www.dol-sensors.com